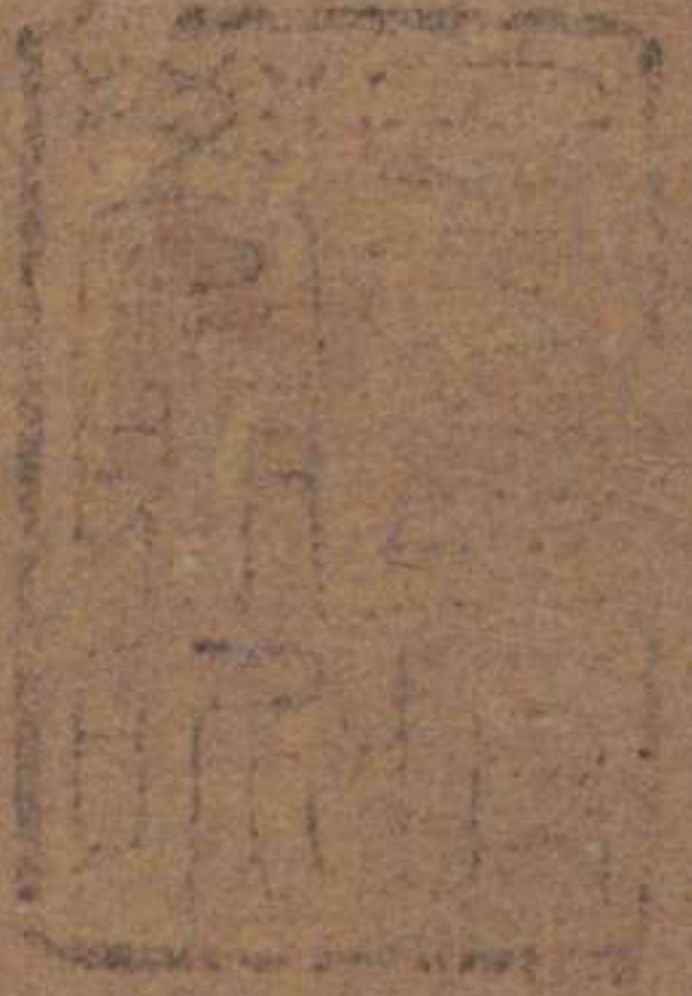


源氏表白



庫 ¹⁴ 門 内

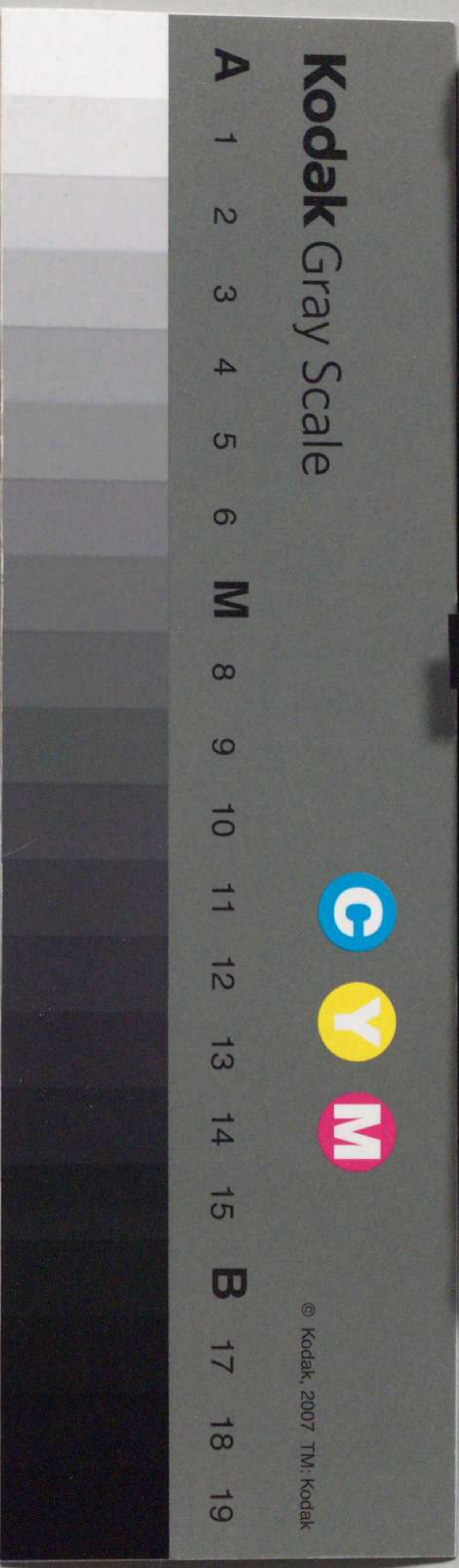
和 書

特 九 十 六 番 類

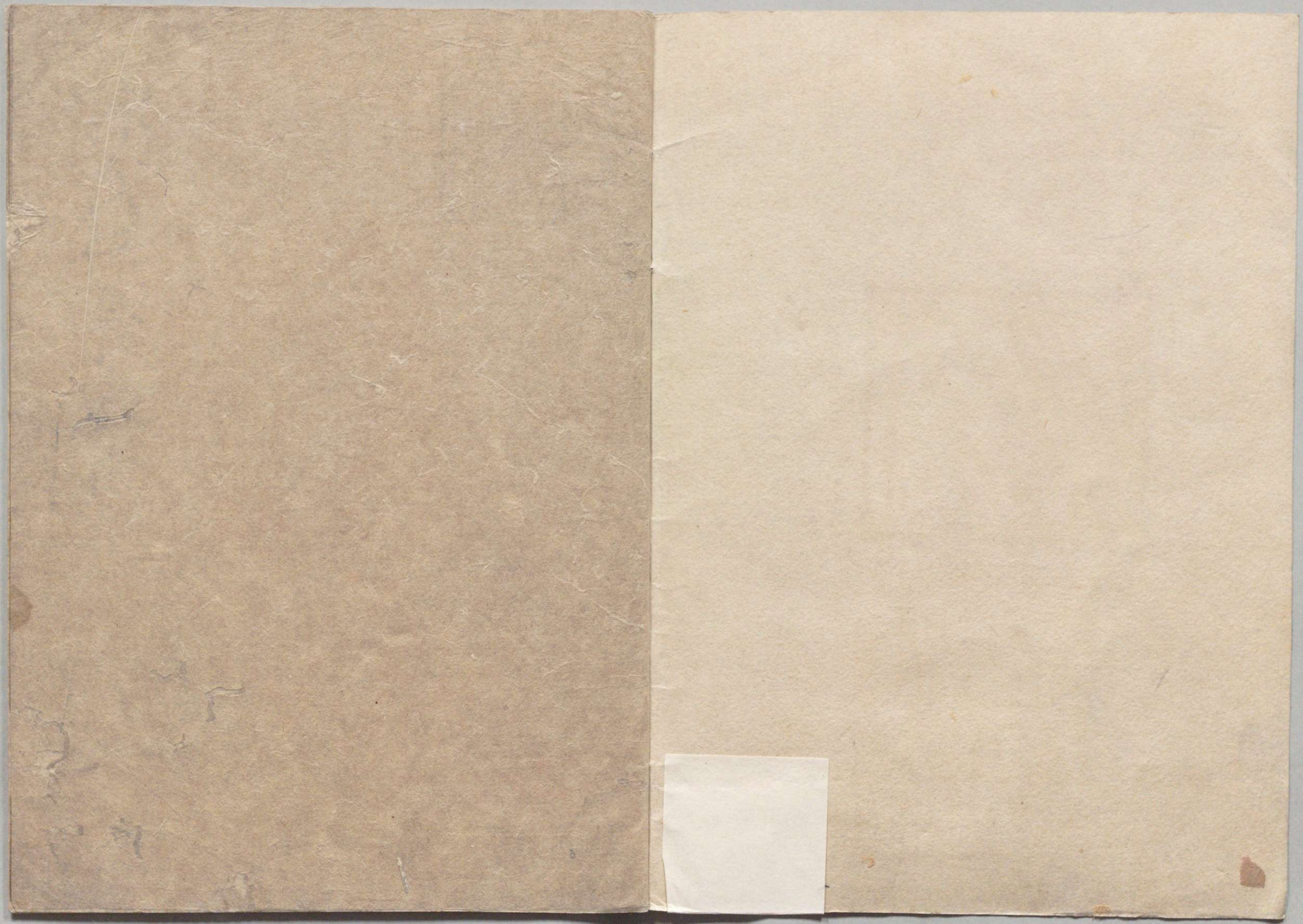
二 〇 六 三 二 號

内 閣 文 庫	
番 號	和 20632
冊 數	1 (1)
函 號	特 96 14

特96-14



糊などで貼り付けられている部分がめくれない箇所あり



源氏供養表白



初平六卷



源氏物語十卷

Handwritten text in a cursive style, possibly a letter or document, written on aged paper. The text is arranged in several lines, with some characters appearing to be in a different script or dialect. The paper shows signs of wear, including creases and discoloration.

源氏供養表白

桐壺乃又た煙もふつと法性の

をふいり着本ののられらる業

はわふ覚樹乃花とひらうし室

蟬のじりき世はいとてく顔

の露のいのらと秋し着紫乃雲

らひらんと得て末摘花乃うて

あふたやうんぬ葉の質の枯

らたもはな葉とのそみてる為

とくはひ花の宴は春を心翔ふ

を飛花と観して無常とけり

らじきゆく佛教ふ交るの賢

本葉乃うて淨刹と祿ふ庵

花散里入りつととじといふを

Handwritten text in a cursive script, likely a letter or document, written on aged paper. The text is arranged in approximately 10 horizontal lines across the page.

Handwritten text in a cursive script, likely a letter or document, written on aged paper. The text is arranged in approximately 10 horizontal lines across the page.

愛別離者のみらりておぼろ
きうもしあすをうくる生死
流浪乃取魔の浦とて空智
圓明れぬ心のうみ標用金の
行あふ道このまき般者のたま
たみまらよたとしき達生れあ
くさいおのこいやくやくて善提のむ

の道とたに秘んけを諦絶の尊容
とらちく繪者ふくね風ふ葉
障乃尊雲とらういさうじ生老
病死の身權乃日親とまうじ何と
ありむす不定乃さういし通女子
く玉鬘らうあしとねこのまか
音とらういけうらういとの初音をか
みうちうししを身鷹鷲奮の

Handwritten text in a cursive script, likely a historical document or letter. The text is written on aged, yellowed paper and is oriented vertically on the right page of the spread.

Handwritten text in a cursive script, likely a historical document or letter. The text is written on aged, yellowed paper and is oriented vertically on the left page of the spread.

あはれにけりおのまじしきもたふたは
ゆゑに胡蝶ささけりくもるまの
ありて大く聖衆のあつたと思
やうこそなる堂のくゆるまの常
夏なかりのいろもき地ふちた
智恵の篝火より引きて野布
の風ぬきいり事うく業賞見
乃御幸にさるるて慈悲ふじ

あくの土園とまじ上品蓮皇ふり
うまくと七寶荘嚴の植根あり
あはれにけり梅之枝のよりふいと
さじり事うるる海らの藤の裏
葉よりけりあそふ木は仙洞千
年の結紅ふりまれとけりてせ
尊す小供養よりる成佛得済の
同とありきありのそをくら井
ふりてしめるとおの宿本と

Handwritten text in a cursive script, likely a letter or document. The text is written on aged, yellowed paper and is oriented vertically. It appears to be a formal or semi-formal communication, possibly a letter of introduction or a report. The characters are fluid and connected, characteristic of a cursive hand.

Handwritten text in a cursive script, continuing from the previous page. The text is written on aged, yellowed paper and is oriented vertically. It appears to be a formal or semi-formal communication, possibly a letter of introduction or a report. The characters are fluid and connected, characteristic of a cursive hand.

目んひて妙法乃たまきこあしてを
姑曠布の罪^三本とてうろ何如
有常位乃風光とてうろ
聖衆音樂の横笛とまじん
うろあきかたや佛法のゆふじ
うろあまうろ家とておとせつ
みまうろお捨まの勢うろとてえ
うろくらにうろかけりとてわろ

うろいりうろうろ又うろのじま
うろかきうろあけまうろうろ
生とうあまうろ御法のみら
あまうろうろ昔海ふらんで
のまぬいともうろとて
うろまじのまうろうろ
のまうろあうろあて
さうろのうろとうろ

Handwritten text in a cursive script, likely a historical document or letter. The text is written in dark ink on aged, yellowish paper. It consists of approximately 12 lines of text, starting with a large initial character that resembles 'M' or 'M'. The script is fluid and characteristic of early modern Japanese calligraphy.

Handwritten text in a cursive script, continuing from the previous page. The text is written in dark ink on aged, yellowish paper. It consists of approximately 12 lines of text, starting with a large initial character that resembles 'E' or 'E'. The script is fluid and characteristic of early modern Japanese calligraphy.

いとねしけりしあはれいひとてい
頃惚のあはれとすまゝ紅梅のあはれ
ふしとて愛するものつとてふし
まじしものあはれはけなれど人
字法の格好なりとてふしと優
艶なまらたこふと道とてふしとふく
権本ふしとてふしとてふしと
の野のあはれとてふしとてふしと

解腕乃総角といふとて車線は
のあはれとてふしとてふしと
たふ梅檀といふとてふしと
をけりといふとてふしと
のあはれとてふしとてふしと
あはれとてふしとてふしと
あはれとてふしとてふしと
あはれとてふしとてふしと

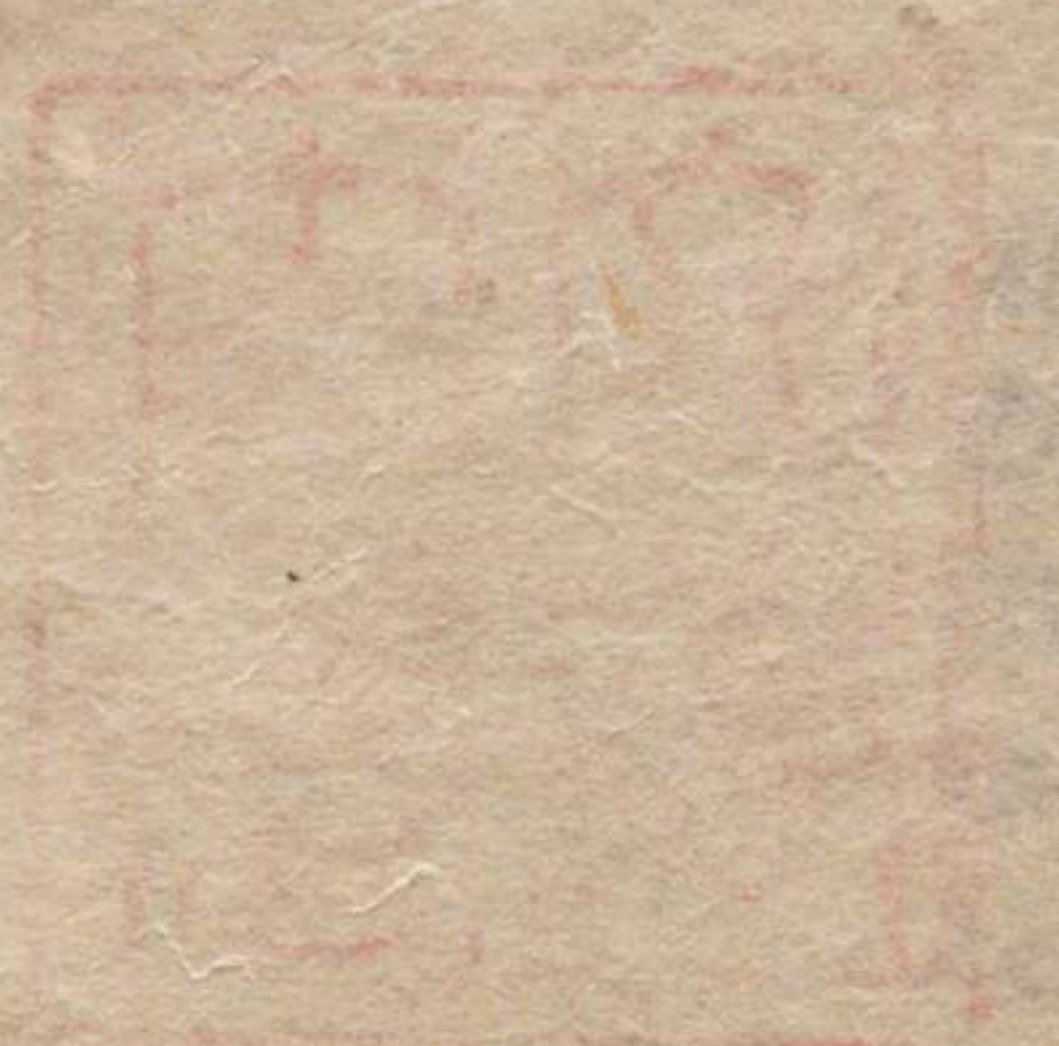
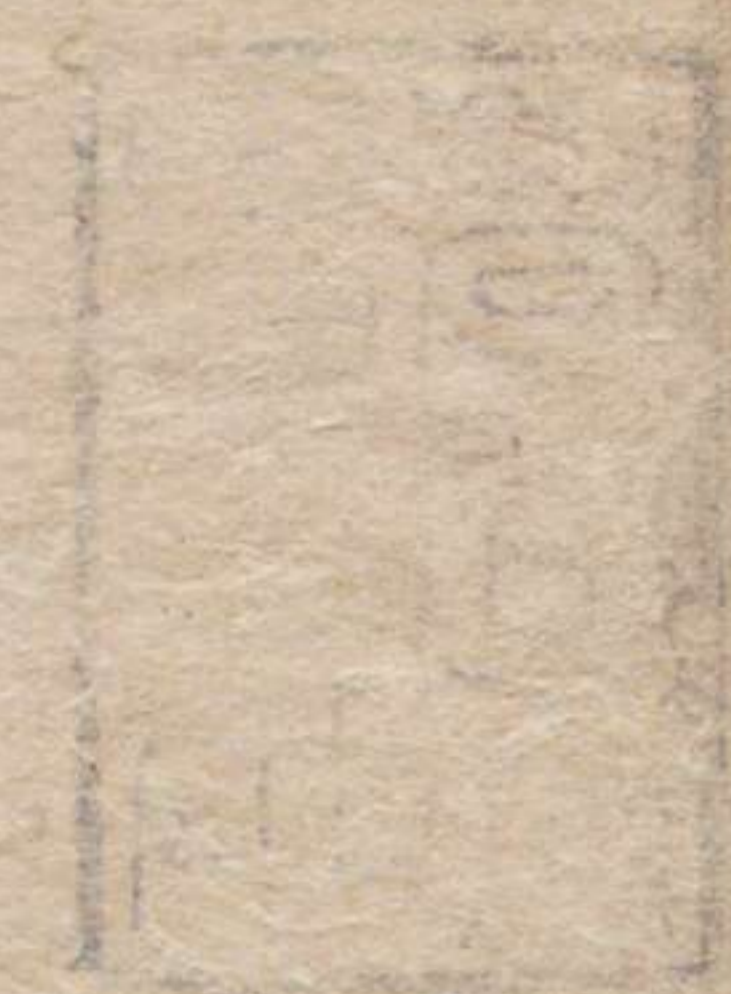
Handwritten text in a cursive script, likely a letter or document. The text is written in a fluid, connected style across several lines. The ink is dark and the paper shows signs of age and wear.

Handwritten text in a cursive script, continuing from the previous page. The text is written in a fluid, connected style across several lines. The ink is dark and the paper shows signs of age and wear.

ありあられくまにまゝに接し
祇のいさゝかへ南を西方極東
跡地善逝祇のいさゝかへ接し
のあらしとりくへては各部
く六藝者意ととらひ終るる
尚ま導師所跡勅意導師の
轉法輪の縁としてこれと

ありあらしとあまの清い
ひら終るるなり

ありあましの... 祇地善... の... 六... 七... 八... 九... 十... 十一... 十二... 十三... 十四... 十五... 十六... 十七... 十八... 十九... 二十...



Handwritten signature or name in the center of the page.

Vertical handwritten text on the left side of the page, possibly a date or recipient information.

以蓮花位以筆江不喜一字寫之
秋什去禪危之也

付橋筆載



紙數拾四枚





