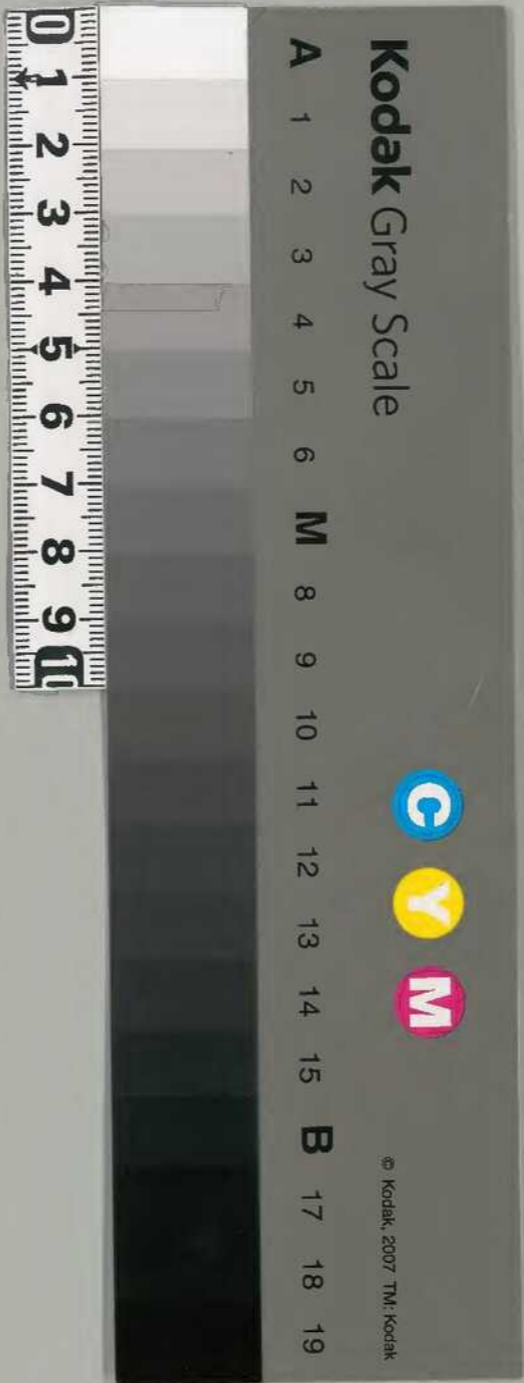


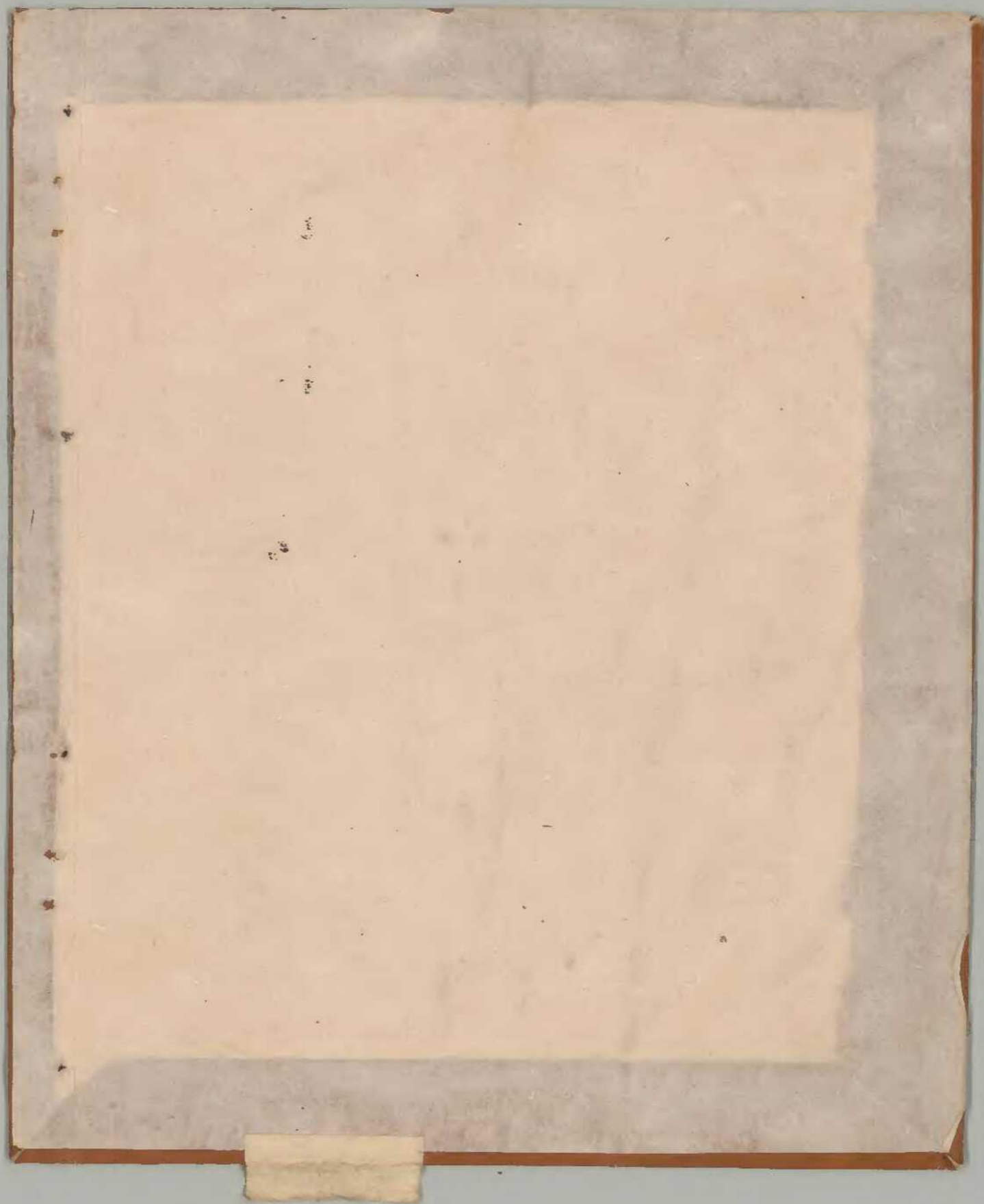
尋憲記 二

庫	文	閣	內
大			和
函			書
架	冊	號	類

內閣文庫	
番號	和 20931
冊數	12 ( 2 )
函號	古 22 366

書文古
二二函共三
三六六號







二二九ノ文 共十三

享和元年八月

元龜元年八月

御到







元龜元介

馬

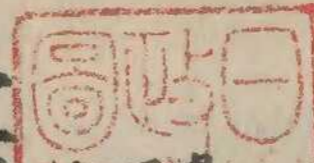




元龜元年八月

十六日

御子の連元唐... 中河... 馬... 御子の連元唐... 中河... 馬... 御子の連元唐... 中河... 馬...



御子の連元唐... 中河... 馬... 御子の連元唐... 中河... 馬... 御子の連元唐... 中河... 馬...

十八日

御子の連元唐... 中河... 馬... 御子の連元唐... 中河... 馬... 御子の連元唐... 中河... 馬...

十九日

御子の連元唐... 中河... 馬... 御子の連元唐... 中河... 馬... 御子の連元唐... 中河... 馬...















一 藤原朝子初乳... 藤原朝子初乳... 藤原朝子初乳...

廿二日

一 行書... 行書... 行書...

一 行書... 行書... 行書...

一 行書... 行書... 行書...

一 行書... 行書... 行書...

一 行書... 行書... 行書...

一 行書... 行書... 行書...

一 行書... 行書... 行書...

一 行書... 行書... 行書...

一 行書... 行書... 行書...

一 行書... 行書... 行書...

一 行書... 行書... 行書...

一 行書... 行書... 行書...

一 行書... 行書... 行書...

一 行書... 行書... 行書...

一 行書... 行書... 行書...

廿四日

一 行書... 行書... 行書...

一 行書... 行書... 行書...

一 行書... 行書... 行書...

一 行書... 行書... 行書...

一 行書... 行書... 行書...

一 行書... 行書... 行書...



一 舞下下海  
一 宛五  
一 海加  
一 二  
一 三  
一 四  
一 五  
一 六  
一 七  
一 八  
一 九  
一 十

一 舞下下海  
一 宛五  
一 海加  
一 二  
一 三  
一 四  
一 五  
一 六  
一 七  
一 八  
一 九  
一 十

一 舞下下海  
一 宛五  
一 海加  
一 二  
一 三  
一 四  
一 五  
一 六  
一 七  
一 八  
一 九  
一 十

一 舞下下海  
一 宛五  
一 海加  
一 二  
一 三  
一 四  
一 五  
一 六  
一 七  
一 八  
一 九  
一 十

一 舞下下海  
一 宛五  
一 海加  
一 二  
一 三  
一 四  
一 五  
一 六  
一 七  
一 八  
一 九  
一 十







廿七日

一 番本百部子三人と下は... 別書

一 市街の... 別書

一 六日... 別書

新門... 別書

の... 別書

廿八日

一 百部轉讀の... 別書

別書











一 宗廟之中 宗廟之中 宗廟之中 宗廟之中 宗廟之中

一 宗廟之中 宗廟之中 宗廟之中 宗廟之中 宗廟之中

宗廟之中 宗廟之中 宗廟之中 宗廟之中 宗廟之中

一 宗廟之中 宗廟之中 宗廟之中 宗廟之中 宗廟之中

一 宗廟之中 宗廟之中 宗廟之中 宗廟之中 宗廟之中

一 宗廟之中 宗廟之中 宗廟之中 宗廟之中 宗廟之中

一 宗廟之中 宗廟之中 宗廟之中 宗廟之中 宗廟之中

一 宗廟之中 宗廟之中 宗廟之中 宗廟之中 宗廟之中

一 宗廟之中 宗廟之中 宗廟之中 宗廟之中 宗廟之中

一 宗廟之中 宗廟之中 宗廟之中 宗廟之中 宗廟之中











山崎の... 中... 未... 乃... 考...

九日

...

...

...

...

...

...

...

...

...

...

...

...

...

...

...

...

九日

...

...

...



























一 五原のりまら来 行をさしりし沙の  
海山（海山）の打とてしとせとてふたすうろの多き  
也

十四日

一 甲の美く定年とて存するの便をいせ  
しる言はく趣きとて世に指すいづきしり  
とて之 海は海老地へ行は海を杉原とす  
いふよ一十なりゆりちかろく保とあは  
し  
一 五原のりまら来 行をさしりし沙の  
海山（海山）の打とてしとせとてふたすうろの多き  
也  
一 五原のりまら来 行をさしりし沙の  
海山（海山）の打とてしとせとてふたすうろの多き  
也  
一 五原のりまら来 行をさしりし沙の  
海山（海山）の打とてしとせとてふたすうろの多き  
也

十五日

一 世に漢風あり  
一 五原のりまら来 行をさしりし沙の  
海山（海山）の打とてしとせとてふたすうろの多き  
也  
一 五原のりまら来 行をさしりし沙の  
海山（海山）の打とてしとせとてふたすうろの多き  
也

十六日

一 五原のりまら来 行をさしりし沙の  
海山（海山）の打とてしとせとてふたすうろの多き  
也

十七日

一 五原のりまら来 行をさしりし沙の  
海山（海山）の打とてしとせとてふたすうろの多き  
也  
一 五原のりまら来 行をさしりし沙の  
海山（海山）の打とてしとせとてふたすうろの多き  
也















三斗  
一斗九升  
五升  
二斗  
一斗五升

成身院  
水原院  
興宗院  
十哲院  
在堂院  
全嘉院

棟 27  
1



平七重  
三子  
也

27  
入  
二



石山寺  
古  
科  
行  
二  
ノ

10.57

27  
挿入  
3



Handwritten text in vertical columns, likely a list or record, written in cursive Japanese calligraphy.

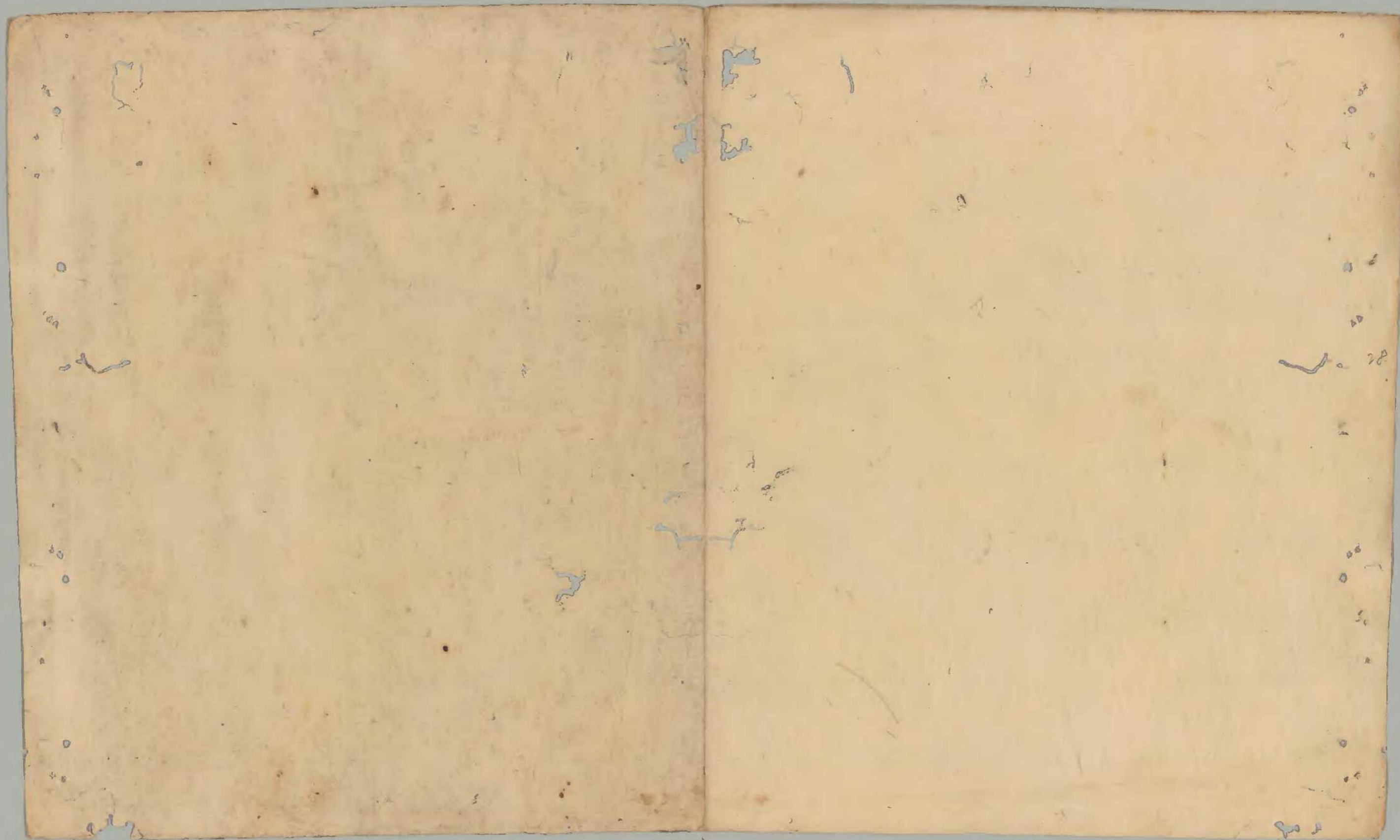
27 挿入 中

人  
今  
高  
菅  
之  
人  
也











Handwritten Japanese characters, likely a title or section header.

Handwritten Japanese text, possibly a preface or introductory note.

Handwritten Japanese text, continuing the narrative or list.

Large handwritten Japanese characters, possibly a significant title or name.

Handwritten Japanese text, likely a list of items or a detailed description.

Handwritten Japanese text, possibly a signature or a specific note.

Handwritten Japanese text, possibly a signature or a specific note.

Handwritten Japanese text, possibly a list of items or a detailed description.

Handwritten Japanese text, possibly a signature or a specific note.

Handwritten Japanese text, possibly a list of items or a detailed description.

Handwritten Japanese text, possibly a signature or a specific note.

Handwritten Japanese characters, possibly a title or section header.

Handwritten Japanese text, possibly a list of items or a detailed description.

Handwritten Japanese characters, possibly a title or section header.



Handwritten text in a cursive script, likely a signature or a specific name, located at the top of the page.

Large, bold handwritten characters, possibly representing a name or a title, written in a stylized cursive hand.

Handwritten text in a cursive script, located below the large characters.

Large, bold handwritten characters, similar in style to the ones above, possibly another name or title.

Handwritten text in a cursive script, located below the second set of large characters.

Large, bold handwritten characters, possibly a signature or a specific name, located at the bottom of the page.

Handwritten text in a cursive script, located at the bottom of the page, possibly a date or a note.



か

る

い

久

入

一

一

ち

一

二

ち

あ

あ

あ

あ

あ

あ

あ



Handwritten text at the top right of the page.

Large, bold, stylized calligraphic character, possibly '心' (Heart/Mind).

Handwritten text in the upper middle section.

Large, bold, stylized calligraphic character, possibly '心' (Heart/Mind).

Handwritten text in the upper left section.

Large, bold, stylized calligraphic character, possibly '心' (Heart/Mind).

Handwritten text in the middle left section.

Large, bold, stylized calligraphic character, possibly '心' (Heart/Mind).

Handwritten text in the lower left section.

Large, bold, stylized calligraphic character, possibly '心' (Heart/Mind).

Vertical column of handwritten text on the left side of the page.

Vertical column of handwritten text on the left side of the page.

Vertical column of handwritten text on the left side of the page.

Vertical column of handwritten text on the left side of the page.



Handwritten text in a cursive script, likely a continuation of the letter or a separate note.

Handwritten text in a cursive script, continuing the flow of the document.

Handwritten text in a cursive script, featuring large, bold characters.

Handwritten text in a cursive script, including the word "Einfach" written in a stylized font.

Handwritten text in a cursive script, appearing to be a list or series of entries.

Handwritten text in a cursive script, with some characters appearing to be in a different script or dialect.

Handwritten text in a cursive script, continuing the narrative or list.

Handwritten text in a cursive script, featuring large, bold characters.

Handwritten text in a cursive script, including the word "Einfach" written in a stylized font.

Handwritten text in a cursive script, appearing to be a list or series of entries.

Handwritten text in a cursive script, including the word "Einfach" written in a stylized font.



1. *Handwritten text in cursive script, possibly a list or index.*

*Handwritten text in cursive script, possibly a list or index.*

*Handwritten text in cursive script, possibly a list or index.*

*Handwritten text in cursive script, possibly a list or index.*

*Handwritten text in cursive script, possibly a list or index.*

*Handwritten text in cursive script, possibly a list or index.*

*Handwritten text in cursive script, possibly a list or index.*

*Handwritten text in cursive script, possibly a list or index.*

*Handwritten text in cursive script, possibly a list or index.*

*Handwritten text in cursive script, possibly a list or index.*

*Handwritten text in cursive script, possibly a list or index.*



今更す

入る

又い

あり

あ

い

あ

あ

あ

あ

あ

あ

あ

あ

あ

あ

あ

下 善の



河

一葉

一葉

一葉

向

物

物

物

物

又

物

物

物

物



Handwritten text in a cursive script, possibly a list or a set of instructions. The text is written in dark ink on aged paper.

Handwritten text in a cursive script, continuing the list or instructions from the previous page. The ink is dark and the paper shows signs of age.

Handwritten text in a cursive script, continuing the list or instructions. The text is written in dark ink on aged paper, with some lines appearing to be crossed out or heavily faded.







Handwritten characters, possibly a name or title.

Handwritten text in a cursive script, likely a signature or a specific name.

Small handwritten mark or character.

Large, stylized handwritten characters, possibly a name or a specific term.

Handwritten text in a cursive script, continuing the notes or signature.

Handwritten text in a cursive script, possibly a date or a specific reference.

Handwritten text in a cursive script, possibly a name or a specific term.

Large, stylized handwritten characters, possibly a name or a specific term.

Large, stylized handwritten characters, possibly a name or a specific term.

Handwritten text in a cursive script, possibly a name or a specific term.

Handwritten text in a cursive script, possibly a name or a specific term.

Handwritten text in a cursive script, possibly a name or a specific term.

Small handwritten mark or character.

Small handwritten mark or character.

Handwritten text in a cursive script, possibly a name or a specific term.

Handwritten text in a cursive script, possibly a name or a specific term.

Handwritten text in a cursive script, possibly a name or a specific term.

Handwritten text in a cursive script, possibly a name or a specific term.

Large, stylized handwritten characters, possibly a name or a specific term.



Handwritten text in a cursive script, likely representing a list or a series of entries. The text is written in a fluid, connected style.

11/10

Handwritten text in a cursive script, continuing the list or entries from the previous page.

Large, bold handwritten characters, possibly representing a title or a significant section header.

Handwritten text in a cursive script, continuing the list or entries.

Handwritten text in a cursive script, continuing the list or entries.















Handwritten text in a cursive script, possibly a list or a series of entries. The text is written in dark ink on aged paper.

Handwritten text in a cursive script, continuing the list or series of entries. The text is written in dark ink on aged paper.

Handwritten text in a cursive script, continuing the list or series of entries. The text is written in dark ink on aged paper.

Handwritten text in a cursive script, continuing the list or series of entries. The text is written in dark ink on aged paper.



Handwritten text in a cursive script, likely a historical document or manuscript. The text is written in a dark ink on aged, yellowish paper. The script is highly stylized and difficult to decipher, but it appears to be a form of shorthand or a specific dialect. The text is organized into several lines, with some lines starting with a vertical bar or a similar symbol. The overall appearance is that of a personal or official record.



Handwritten text in cursive script, likely a signature or name.

Handwritten text in cursive script, possibly a date or a specific reference.

Handwritten text in cursive script, appearing to be a list or a series of entries.

Handwritten text in cursive script, possibly a title or a section header.

Handwritten text in cursive script, likely a signature or name.

Handwritten text in cursive script, possibly a date or a specific reference.

Handwritten text in cursive script, appearing to be a list or a series of entries.

Handwritten text in cursive script, possibly a title or a section header.

Handwritten text in cursive script, likely a signature or name.



子路曰

有子

子路曰

子路曰

子路曰

十一

子路曰

子路曰

十二

子路曰

子路曰

子路曰

子路曰



1 此書は...  
Handwritten text in a cursive style, likely a title or introductory note.

一 此書は...  
Handwritten text in a cursive style.

大書...  
Large handwritten characters, possibly a section header.

一 此書は...  
Handwritten text in a cursive style.

一 此書は...  
Large handwritten characters, possibly a section header.

一 此書は...  
Handwritten text in a cursive style.

一 此書は...  
Handwritten text in a cursive style.

一 此書は...  
Large handwritten characters, possibly a section header.

一 此書は...  
Handwritten text in a cursive style.

一 此書は...  
Handwritten text in a cursive style.

一 此書は...  
Handwritten text in a cursive style.

一 此書は...  
Large handwritten characters, possibly a section header.

一 此書は...  
Handwritten text in a cursive style.

一 此書は...  
Handwritten text in a cursive style.

一 此書は...  
Large handwritten characters, possibly a section header.

一 此書は...  
Handwritten text in a cursive style.

一 此書は...  
Large handwritten characters, possibly a section header.



Handwritten text in cursive script, likely a signature or name.

Handwritten text in cursive script, possibly a date or address.

Handwritten text in cursive script, possibly a date or address.

Handwritten text in cursive script, possibly a date or address.

Handwritten text in cursive script, possibly a date or address.

Handwritten text in cursive script, possibly a date or address.

Handwritten text in cursive script, possibly a date or address.

Handwritten text in cursive script, possibly a date or address.

Handwritten text in cursive script, possibly a date or address.

Handwritten text in cursive script, possibly a date or address.

Handwritten text in cursive script, possibly a date or address.

Handwritten text in cursive script, possibly a date or address.

Handwritten text in cursive script, possibly a date or address.

Handwritten text in cursive script, possibly a date or address.

Handwritten text in cursive script, possibly a date or address.

Handwritten text in cursive script, possibly a date or address.

Handwritten text in cursive script, possibly a date or address.

Handwritten text in cursive script, possibly a date or address.



1 此來六十一卷... 卷之六十一

1 此來六十一卷... 卷之六十一

1 此來六十一卷... 卷之六十一

1 此來六十一卷... 卷之六十一

1 此來六十一卷... 卷之六十一

1 此來六十一卷... 卷之六十一

1 此來六十一卷... 卷之六十一

1 此來六十一卷... 卷之六十一

1 此來六十一卷... 卷之六十一

1 此來六十一卷... 卷之六十一

1 此來六十一卷... 卷之六十一



あやう

あやう

あやう

あやう

祝

あやう

あやう

あやう

あやう



Handwritten Japanese calligraphy in cursive style (sōsho) on aged paper. The text is arranged in vertical columns, reading from right to left. The characters are highly stylized and fluid, with some ink bleed-through visible from the reverse side of the page. The paper shows signs of age, including foxing and some staining.



Handwritten Japanese text on aged paper, organized into two columns. The characters are written in a cursive style (sōsho). The right column contains the characters 一、二、三、四、五、六、七、八、九、十. The left column contains the characters 十一、十二、十三、十四、十五、十六、十七、十八、十九、二十. The paper shows signs of age, including discoloration and some staining.



Handwritten text on a small, rectangular piece of aged paper, possibly a label or a note. The text is written in a cursive script, likely Japanese, and is oriented vertically. The paper is yellowed and shows signs of wear. The text is mostly illegible due to fading and the cursive style, but some characters are visible. At the bottom right of the paper, there is a small number: 231 (a)



Handwritten text on a vertical strip of aged paper, likely a document fragment or a page from a book. The text is written in a cursive style, possibly in a historical Japanese script (kuzushiji). The paper shows signs of wear, including a tear at the top and some discoloration.



今本  
天正  
六月  
廿五日  
申  
人  
書

天正六年六月廿五日

申  
人  
書  
天正六年六月廿五日



Handwritten text in a cursive script on a narrow strip of aged paper. The text is arranged in approximately three vertical columns, reading from right to left. The characters are dark and somewhat faded, with some ink bleed-through visible from the reverse side of the paper. The paper shows signs of wear, including small tears and discoloration.



