

淡路守 一

淡路守 一  
淡路守 一

淡路守

関子  
25  
10



West Point

341000

Washington

200000

Washington

Washington

Washington

Washington

Washington

Washington

行四年多病事  
多如至了依作

考心在清年多病事

一 遊御 一 遊御 一 遊御

一 遊御 一 遊御 一 遊御

一 遊御 一 遊御 一 遊御

一 遊御 一 遊御 一 遊御

一 遊御 一 遊御 一 遊御

一 遊御 一 遊御 一 遊御

一 遊御 一 遊御 一 遊御

Handwritten text in a cursive script, likely a list or record.

Handwritten text, possibly a date or a specific entry.

Handwritten text, possibly a name or a title.

Handwritten text, possibly a name or a title.

Handwritten text, possibly a name or a title.

Handwritten text, possibly a name or a title.

Handwritten text, possibly a name or a title.

Handwritten text, possibly a name or a title.

Handwritten text, possibly a name or a title.

Handwritten text, possibly a name or a title.

Handwritten text, possibly a name or a title.

Handwritten text, possibly a name or a title.

Handwritten text, possibly a name or a title.

Handwritten text, possibly a name or a title.

Handwritten text, possibly a name or a title.

Handwritten text, possibly a name or a title.

Handwritten text, possibly a name or a title.

21402 21410 21411 21412 21413 21414 21415 21416 21417 21418 21419 21420 21421 21422 21423 21424 21425 21426 21427 21428 21429 21430 21431 21432 21433 21434 21435 21436 21437 21438 21439 21440 21441 21442 21443 21444 21445 21446 21447 21448 21449 21450 21451 21452 21453 21454 21455 21456 21457 21458 21459 21460 21461 21462 21463 21464 21465 21466 21467 21468 21469 21470 21471 21472 21473 21474 21475 21476 21477 21478 21479 21480 21481 21482 21483 21484 21485 21486 21487 21488 21489 21490 21491 21492 21493 21494 21495 21496 21497 21498 21499 21500

皇清同治十三年

21501 21502 21503 21504 21505 21506 21507 21508 21509 21510 21511 21512 21513 21514 21515 21516 21517 21518 21519 21520 21521 21522 21523 21524 21525 21526 21527 21528 21529 21530 21531 21532 21533 21534 21535 21536 21537 21538 21539 21540 21541 21542 21543 21544 21545 21546 21547 21548 21549 21550 21551 21552 21553 21554 21555 21556 21557 21558 21559 21560 21561 21562 21563 21564 21565 21566 21567 21568 21569 21570 21571 21572 21573 21574 21575 21576 21577 21578 21579 21580 21581 21582 21583 21584 21585 21586 21587 21588 21589 21590 21591 21592 21593 21594 21595 21596 21597 21598 21599 21600

21601 21602 21603 21604 21605 21606 21607 21608 21609 21610 21611 21612 21613 21614 21615 21616 21617 21618 21619 21620 21621 21622 21623 21624 21625 21626 21627 21628 21629 21630 21631 21632 21633 21634 21635 21636 21637 21638 21639 21640 21641 21642 21643 21644 21645 21646 21647 21648 21649 21650 21651 21652 21653 21654 21655 21656 21657 21658 21659 21660 21661 21662 21663 21664 21665 21666 21667 21668 21669 21670 21671 21672 21673 21674 21675 21676 21677 21678 21679 21680 21681 21682 21683 21684 21685 21686 21687 21688 21689 21690 21691 21692 21693 21694 21695 21696 21697 21698 21699 21700

Handwritten text in a cursive script, likely a signature or a specific name.

Handwritten text in a cursive script, possibly a date or a reference number.

Handwritten text in a cursive script, possibly a name or a title.

Handwritten text in a cursive script, possibly a name or a title.

Handwritten text in a cursive script, possibly a name or a title.

Handwritten text in a cursive script, possibly a name or a title.

Handwritten text in a cursive script, possibly a name or a title.

Handwritten text in a cursive script, possibly a name or a title.

Handwritten text in a cursive script, possibly a name or a title.

Handwritten text in a cursive script, possibly a name or a title.

Handwritten text in a cursive script, possibly a name or a title.

Handwritten text in a cursive script, likely a name or title.

Handwritten text in a cursive script.

Handwritten text in a cursive script.

Handwritten text in a cursive script.

Small handwritten character.

Handwritten text in a cursive script.

Small handwritten character.

醒 (Awake)

Handwritten text in a cursive script.

Handwritten text in a cursive script.

Small handwritten character.

Small handwritten character.

Handwritten text in a cursive script.

Small handwritten character.

醒 (Awake)

Handwritten text in a cursive script.

Handwritten text in a cursive script.

Small handwritten character.

醒 (Awake)

Handwritten text in a cursive script.

Handwritten text in a cursive script.

Small handwritten character.

Handwritten text in a cursive script.

Handwritten text in a cursive script.

1 亞細亞 海峽 殖民地

~~亞細亞~~ 海峽

亞細亞 海峽 殖民地 之 行政 機關

亞細亞 海峽 殖民地 之 法律 制度

亞細亞 海峽 殖民地 之 財政 制度

亞細亞 海峽 殖民地 之 教育 制度

亞細亞 海峽 殖民地 之 社會 制度

亞細亞 海峽 殖民地 之 交通 制度

1 亞細亞 海峽 殖民地

海峽

1 亞細亞 海峽 殖民地 之 行政 機關

亞細亞 海峽 殖民地 之 法律 制度

亞細亞 海峽 殖民地 之 財政 制度

亞細亞 海峽 殖民地 之 教育 制度

海峽 殖民地



長者道本

長者道本

長者道本

長者道本

長者道本

長者道本

長者道本

長者道本

長者道本

Handwritten text in a cursive style, possibly a signature or a name, located at the top right of the page.

Handwritten text in a cursive style, located below the top right text.

Handwritten text in a cursive style, located in the middle right section.

Handwritten text in a cursive style, located in the middle right section.

Handwritten text in a cursive style, located in the middle right section.

Handwritten text in a cursive style, located in the middle right section.

Handwritten text in a cursive style, located in the middle right section.

Handwritten text in a cursive style, located in the middle right section.

Handwritten text in a cursive style, located in the middle left section.

Handwritten text in a cursive style, located in the middle left section.

Handwritten text in a cursive style, located in the middle left section.

Handwritten text in a cursive style, located in the middle left section.

Handwritten text in a cursive style, located in the middle left section.

一 此後諸君...

一 此後諸君...

一 此後諸君...

一 此後諸君...

一 此後諸君...

一 此後諸君...

一 此後諸君...

一 此後諸君...

一 此後諸君...

一 此後諸君...

一 此後諸君...

一 此後諸君...

此後諸君...

Handwritten header text at the top right of the page.

Handwritten text line, possibly a date or reference number.

Handwritten text line, possibly a name or title.

Handwritten text line, possibly a name or title.

Handwritten text line, possibly a name or title.

Handwritten text line, possibly a name or title.

Handwritten text line, possibly a name or title.

Handwritten text line, possibly a name or title.

Handwritten text line, possibly a name or title.

Handwritten text line, possibly a name or title.

Handwritten text line, possibly a name or title.

Handwritten text line, possibly a name or title.

海下

請定交交三年六月三日發給公署核閱等事

光緒二十九年六月三日發給公署核閱等事

光緒二十九年六月三日發給公署核閱等事

光緒二十九年六月三日發給公署核閱等事

光緒二十九年六月三日發給公署核閱等事

光緒二十九年六月三日發給公署核閱等事

光緒二十九年六月三日發給公署核閱等事

光緒二十九年六月三日發給公署核閱等事

光緒二十九年六月三日發給公署核閱等事

光緒二十九年六月三日發給公署核閱等事

光緒二十九年六月三日發給公署核閱等事

1. 延建 延建 延建 延建 延建 延建 延建 延建 延建 延建

tile

1. 延建 延建 延建 延建 延建 延建 延建 延建 延建 延建

1. 延建 延建 延建 延建 延建 延建 延建 延建 延建 延建

1. 延建 延建 延建 延建 延建 延建 延建 延建 延建 延建

tile

1. 延建 延建 延建 延建 延建 延建 延建 延建 延建 延建

延建

延建 延建 延建 延建 延建 延建 延建 延建 延建 延建

延建 延建 延建 延建 延建 延建 延建 延建 延建 延建

延建 延建 延建 延建 延建 延建 延建 延建 延建 延建

延建 延建 延建 延建 延建 延建 延建 延建 延建 延建

延建 延建 延建 延建 延建 延建 延建 延建 延建 延建

1. 延建 延建 延建 延建 延建 延建 延建 延建 延建 延建

延建 延建 延建 延建 延建 延建 延建 延建 延建 延建

Handwritten text in a cursive script, likely a letter or document. The text is written on aged, yellowed paper and is organized into several lines. The script is dense and characteristic of historical Japanese calligraphy. The text is written from right to left, following the traditional format of vertical writing. The characters are highly stylized and interconnected, typical of the 'sōsho' (cursive) style. The paper shows signs of age, including some staining and discoloration. The overall appearance is that of an antique manuscript or document.





Handwritten Japanese text in cursive style (sōsho), consisting of approximately 15 vertical columns of characters. The text is dense and difficult to decipher due to the highly stylized script.

Handwritten text in a cursive script, likely a form of shorthand or a specific dialect. The text is arranged in several lines, with some characters appearing to be stylized or abbreviated. The script is dense and difficult to decipher without a key.

1018 神倉

十元

1 1888年

1 日本銀行券 拾圓 券番 1111111111  
昭和十一年 八月 十日

1 日本銀行券 拾圓 券番 1111111111

1 日本銀行券 拾圓 券番 1111111111

1 日本銀行券 拾圓 券番 1111111111

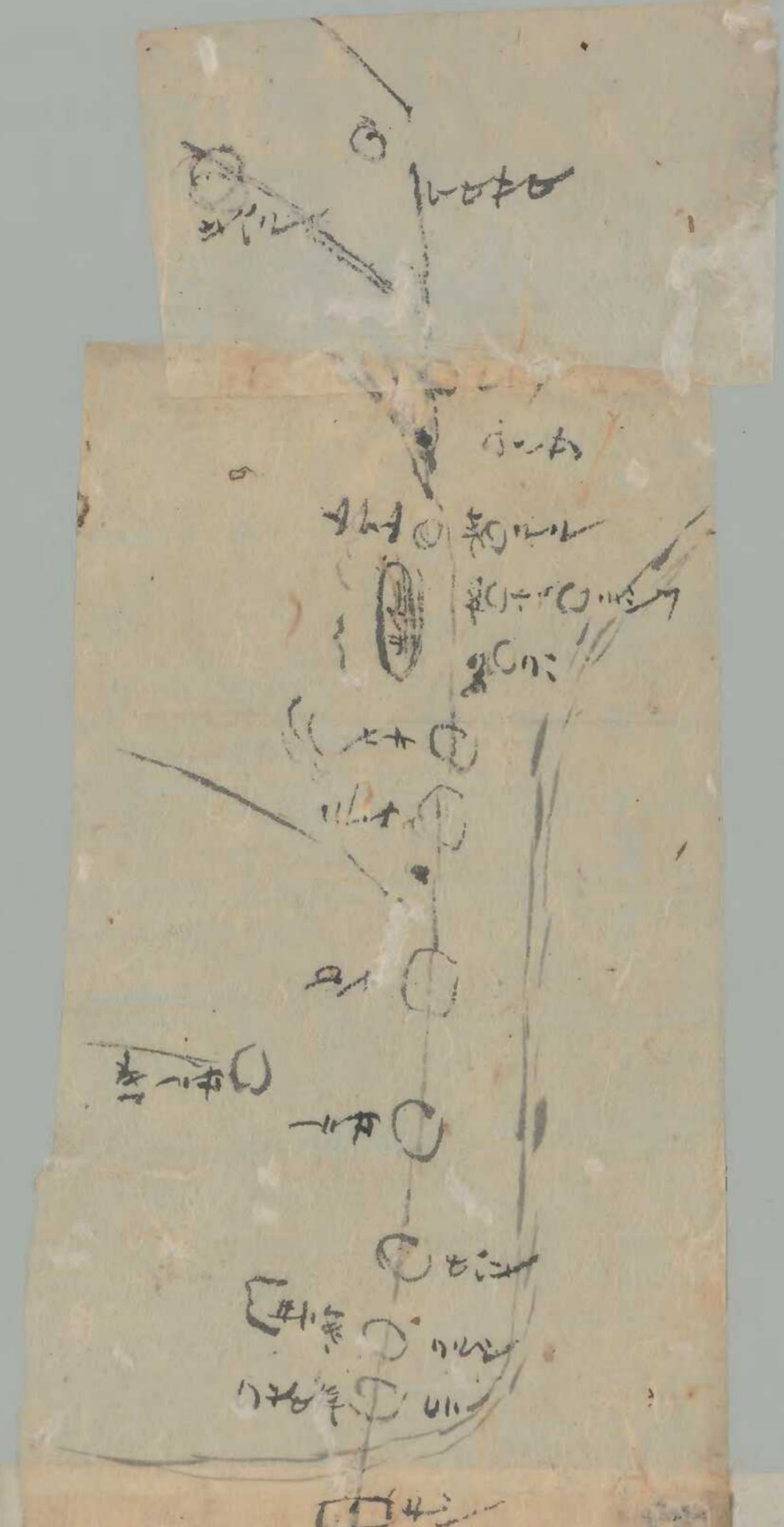
1 日本銀行券 拾圓 券番 1111111111

1 日本銀行券 拾圓 券番 1111111111

1 日本銀行券 拾圓 券番 1111111111

1 日本銀行券 拾圓 券番 1111111111

1. 此乃... (faint handwritten text)  
 2. 此乃... (faint handwritten text)  
 3. 此乃... (faint handwritten text)  
 4. 此乃... (faint handwritten text)  
 5. 此乃... (faint handwritten text)



1. 此乃... (faint handwritten text)  
 2. 此乃... (faint handwritten text)  
 3. 此乃... (faint handwritten text)  
 4. 此乃... (faint handwritten text)  
 5. 此乃... (faint handwritten text)

*Handwritten text at the top of the page, possibly a title or header.*

*Vertical handwritten text on the right side of the page.*

*Vertical handwritten text, possibly a signature or name.*

*Vertical handwritten text, possibly a date or specific note.*

*Vertical handwritten text, possibly a list or detailed notes.*

*Large handwritten character or symbol, possibly '和' (Wa).*

*Vertical handwritten text on the left side of the page.*

Handwritten text in a cursive script, possibly a list or account. The text is written on a single sheet of paper that has been folded in half. The script is dense and difficult to decipher, but appears to be organized into several lines or entries. There are some large, stylized characters that might be initials or specific terms. The paper shows signs of age, including some staining and wear.

Handwritten text in a cursive script, continuing from the previous section. The script is consistent in style, suggesting a single scribe. The text is written on the same sheet of paper, which is now unfolded. The lines of text are somewhat irregular, following the natural flow of the writing. There are some small marks and corrections visible throughout the text.

Handwritten text in a cursive script, continuing the list or account. The text is written on the same sheet of paper. The script remains consistent, with some variations in the thickness of the lines and the spacing between characters. The overall appearance is that of a personal or official record from the late 17th or early 18th century.

Handwritten text in a cursive script, continuing the list or account. The text is written on the same sheet of paper. The script is consistent, with some variations in the thickness of the lines and the spacing between characters. The overall appearance is that of a personal or official record from the late 17th or early 18th century.

Handwritten text in a cursive script, continuing the list or account. The text is written on the same sheet of paper. The script is consistent, with some variations in the thickness of the lines and the spacing between characters. The overall appearance is that of a personal or official record from the late 17th or early 18th century.

Handwritten text in a cursive script, possibly a signature or a name.

1 花... (A line of handwritten text starting with the number 1)

Handwritten text in a cursive script, possibly a signature or a name.

Handwritten text in a cursive script, possibly a signature or a name.

1 花... (A line of handwritten text starting with the number 1)

Handwritten text in a cursive script, possibly a signature or a name.

Handwritten text in a cursive script, possibly a signature or a name.

Handwritten text in a cursive script, possibly a signature or a name.

Handwritten text in a cursive script, possibly a signature or a name.

Handwritten text in a cursive script, possibly a signature or a name.

Handwritten text in a cursive script, possibly a signature or a name.

Handwritten text in a cursive script, possibly a signature or a name.

Handwritten text in a cursive script, possibly a signature or a name.

Handwritten text in a cursive script, possibly a signature or a name.

Handwritten text in a cursive script, possibly a signature or a name.

Handwritten text in a cursive script, possibly a signature or a name.

Handwritten text in a cursive script, possibly a signature or a name.

Handwritten text at the top right corner, possibly a date or reference number.

Handwritten text in the upper right section, consisting of several lines of cursive script.

Handwritten text in the middle right section, including a large, stylized flourish or signature.

Handwritten text in the middle left section, appearing as a single line or short phrase.

Handwritten text in the lower middle section, featuring a large, decorative flourish.

Main body of handwritten text in the lower left section, consisting of multiple lines of cursive script.

Small handwritten mark or number at the bottom left corner.



Handwritten text at the top of the right page, possibly a header or title.

Handwritten text line on the right page.

Handwritten text line on the right page.

Handwritten text line on the right page.

Handwritten text line on the right page.

Handwritten text line on the right page.

Handwritten text line on the right page.

Handwritten text line on the right page.

Handwritten text line on the right page.

Handwritten text line on the right page.

Handwritten text line on the left page.

Handwritten text line on the left page.

Handwritten text line on the left page.

Handwritten text line on the left page.

Handwritten text line on the left page.

Handwritten text line on the left page.

Handwritten text line on the left page.

Handwritten text line on the left page.

Handwritten text line on the left page.

Handwritten text line on the left page.

Handwritten text line on the left page.

道平石山

新島元隆

三浦一忠

三浦一忠

三浦一忠

三浦一忠

三浦一忠

三浦一忠

三浦一忠

三浦一忠

三浦一忠

Handwritten text in a cursive script, possibly a list or account.

Small handwritten note or signature.

Handwritten text, possibly a list or account.

Handwritten text, possibly a list or account.

Handwritten text, possibly a list or account.

Handwritten text, possibly a list or account.

Handwritten text, possibly a list or account.

Handwritten text, possibly a list or account.

Handwritten text, possibly a list or account.

Handwritten text, possibly a list or account.

Handwritten text, possibly a list or account.

Handwritten text, possibly a list or account.

Handwritten text, possibly a list or account.

Handwritten text, possibly a list or account.

Handwritten text at the top of the right page, possibly a header or title.

1 第一條 凡我國民...

Handwritten text on the right page, second line.

1 第二條 凡我國民...

Handwritten text on the right page, third line.

Handwritten text on the right page, fourth line.

Handwritten text on the right page, fifth line.

1 第三條 凡我國民...

Handwritten text on the right page, sixth line.

Handwritten text on the right page, seventh line.

Handwritten text on the right page, eighth line.

Handwritten text on the right page, ninth line.

Handwritten text on the right page, tenth line.

Handwritten text on the right page, eleventh line.

Handwritten text on the right page, twelfth line.

Handwritten text at the bottom of the right page.

Handwritten text at the bottom of the right page.

Handwritten text at the bottom of the right page.

1 第四條 凡我國民...

Handwritten text on the left page, first line.

Handwritten text on the left page, second line.

Handwritten text on the left page, third line.

Handwritten text at the top left of the page.

Handwritten text at the bottom left of the page.

Main body of handwritten text on the left page, consisting of several lines of cursive script.

Main body of handwritten text on the right page, consisting of several lines of cursive script.

Handwritten text in cursive script, likely a list or account. The text is written vertically from right to left. It includes several lines of characters, some of which appear to be numbers or specific terms, though they are difficult to decipher due to the cursive style. The text is written in dark ink on aged paper.

Handwritten text in cursive script, continuing the list or account. It features several lines of characters, including what looks like a date or a specific reference at the top. The handwriting is consistent with the previous page.

Handwritten text in cursive script, continuing the list or account. It includes several lines of characters, some of which are more legible than others. The text is written in dark ink on aged paper.

1. Still in the same position

加

1. 依然在此 (Still in the same position)  
2. 依然在此 (Still in the same position)  
3. 依然在此 (Still in the same position)  
4. 依然在此 (Still in the same position)  
5. 依然在此 (Still in the same position)  
6. 依然在此 (Still in the same position)  
7. 依然在此 (Still in the same position)  
8. 依然在此 (Still in the same position)  
9. 依然在此 (Still in the same position)  
10. 依然在此 (Still in the same position)

1. 依然在此 (Still in the same position)  
2. 依然在此 (Still in the same position)  
3. 依然在此 (Still in the same position)  
4. 依然在此 (Still in the same position)  
5. 依然在此 (Still in the same position)  
6. 依然在此 (Still in the same position)  
7. 依然在此 (Still in the same position)  
8. 依然在此 (Still in the same position)  
9. 依然在此 (Still in the same position)  
10. 依然在此 (Still in the same position)

101  
31

Handwritten text in a cursive script, likely a list or account. The text is written on aged, yellowed paper. It begins with a vertical line on the left side of the page, followed by several lines of text. The script is dense and difficult to decipher, but appears to be a form of shorthand or a specific dialect. There are some larger, more decorative characters interspersed within the lines.

Handwritten text in a cursive script, continuing from the previous page. It features a prominent, large, stylized character or symbol at the beginning of the first line. The text is written in a similar cursive style to the previous page, with some decorative flourishes. There are some smaller characters and symbols interspersed within the lines.

Handwritten text in a cursive script, continuing from the previous page. It features a prominent, large, stylized character or symbol at the beginning of the first line. The text is written in a similar cursive style to the previous page, with some decorative flourishes. There are some smaller characters and symbols interspersed within the lines.



1 1/2

十一日

1 1/2

1 1/2

1 1/2

1 1/2

1 1/2

1 1/2

1 1/2

1 1/2

1 1/2

1 1/2

1 1/2

1 1/2

1 1/2

1 1/2

1 1/2

1 1/2

一 櫻井 氏 宛 御 手 紙 一

一 櫻井 氏 宛 御 手 紙 一

一 櫻井 氏 宛 御 手 紙 一

一 櫻井 氏 宛 御 手 紙 一

一 櫻井 氏 宛 御 手 紙 一

一 櫻井 氏 宛 御 手 紙 一

一 櫻井 氏 宛 御 手 紙 一

一 櫻井 氏 宛 御 手 紙 一

一 櫻井 氏 宛 御 手 紙 一

一 櫻井 氏 宛 御 手 紙 一

一 櫻井 氏 宛 御 手 紙 一

一 櫻井 氏 宛 御 手 紙 一

一 櫻井 氏 宛 御 手 紙 一

一 櫻井 氏 宛 御 手 紙 一

一 櫻井 氏 宛 御 手 紙 一

一 櫻井 氏 宛 御 手 紙 一

一 櫻井 氏 宛 御 手 紙 一

一 櫻井 氏 宛 御 手 紙 一

一 櫻井 氏 宛 御 手 紙 一

一 櫻井 氏 宛 御 手 紙 一

一 櫻井 氏 宛 御 手 紙 一

一 櫻井 氏 宛 御 手 紙 一

Handwritten text at the top right of the page.

Handwritten text in the upper right section.

Handwritten text in the middle right section.

Handwritten text in the lower right section.

Handwritten text in the lower right section.

Handwritten text in the lower right section.

Handwritten text in the lower right section.

Handwritten text in the lower right section.

Handwritten text in the lower right section.

Handwritten text in the lower right section.

Handwritten text in the lower right section.

Handwritten text in the lower right section.

Handwritten text in the lower right section.

Handwritten text at the top of the right page.

Handwritten text on the right page, second line.

Handwritten text on the right page, third line.

Handwritten text on the right page, fourth line.

Handwritten text on the right page, fifth line.

Handwritten text on the right page, sixth line.

Handwritten text on the right page, seventh line.

Handwritten text on the right page, eighth line.

Handwritten text on the right page, ninth line.

Handwritten text on the right page, tenth line.

Small handwritten mark or signature on the right page.

Handwritten text on the left page, first line.

Handwritten text on the left page, second line.

Handwritten text on the left page, third line.

Handwritten text on the left page, fourth line.

Handwritten text on the left page, fifth line.

Handwritten text on the left page, sixth line.

Handwritten text on the left page, seventh line.

Handwritten text on the left page, eighth line.

Handwritten text on the left page, ninth line.

Handwritten text on the left page, tenth line.

110

Handwritten text in cursive script, possibly a signature or name.

Handwritten text in cursive script.

Handwritten text in cursive script.

Handwritten text in cursive script.

Handwritten text in cursive script.

Handwritten text in cursive script.

Handwritten text in cursive script.

Handwritten text in cursive script.

Handwritten text in cursive script.

Handwritten text in cursive script.

Handwritten text in cursive script.

Handwritten text in cursive script.

Handwritten text in cursive script.

Handwritten text in cursive script.

Handwritten text in cursive script.

Handwritten text in cursive script.

Handwritten text in cursive script.

Handwritten text in cursive script.

Handwritten text in cursive script.

101

1. 江戸の芝居の流行と其の歴史

本紙

1. 芝居の源流

本紙

江戸

1. 芝居の源流と其の歴史

本紙

1. 芝居の源流と其の歴史

1. 芝居の源流と其の歴史

本紙

芝居

江戸

1. 芝居の源流と其の歴史

芝居

1. 芝居の源流と其の歴史

1. 芝居の源流と其の歴史

1. 芝居の源流と其の歴史

1. 芝居の源流と其の歴史

1. 御覽  
2. 御覽

本

御覽  
御覽

御覽  
御覽

御覽  
御覽

御覽  
御覽

御覽  
御覽

御覽

御覽  
御覽

御覽  
御覽

御覽  
御覽





Handwritten header or title in cursive script.



Handwritten text in cursive script, consisting of several lines of text.

Main body of handwritten text in cursive script, occupying the lower half of the page.

1 田代 田代 田代 田代 田代

田代 田代

田代 田代 田代 田代 田代

田代 田代

田代 田代 田代 田代 田代

田代 田代 田代 田代 田代

田代

田代 田代 田代 田代 田代

田代 田代 田代 田代 田代

田代 田代 田代 田代 田代

田代 田代 田代 田代 田代

田代 田代 田代 田代 田代

田代 田代 田代 田代 田代

田代 田代

田代 田代 田代 田代 田代

田代 田代 田代 田代 田代

田代 田代 田代 田代 田代

田代

田代 田代 田代 田代 田代

五

1 蘇州府 蘇州府 蘇州府

蘇州府

1 蘇州府 蘇州府 蘇州府

蘇州府

蘇州府 蘇州府 蘇州府

1 蘇州府 蘇州府 蘇州府

蘇州府

蘇州府 蘇州府 蘇州府

蘇州府 蘇州府 蘇州府

1 蘇州府 蘇州府 蘇州府

蘇州府

蘇州府

一

1. 2000-10-10 10:00  
 2. 2000-10-10 10:00  
 3. 2000-10-10 10:00  
 4. 2000-10-10 10:00  
 5. 2000-10-10 10:00  
 6. 2000-10-10 10:00  
 7. 2000-10-10 10:00  
 8. 2000-10-10 10:00  
 9. 2000-10-10 10:00  
 10. 2000-10-10 10:00

1. 2000-10-10 10:00  
 2. 2000-10-10 10:00  
 3. 2000-10-10 10:00  
 4. 2000-10-10 10:00  
 5. 2000-10-10 10:00  
 6. 2000-10-10 10:00  
 7. 2000-10-10 10:00  
 8. 2000-10-10 10:00  
 9. 2000-10-10 10:00  
 10. 2000-10-10 10:00

1. 2000-10-10 10:00  
 2. 2000-10-10 10:00  
 3. 2000-10-10 10:00  
 4. 2000-10-10 10:00  
 5. 2000-10-10 10:00  
 6. 2000-10-10 10:00  
 7. 2000-10-10 10:00  
 8. 2000-10-10 10:00  
 9. 2000-10-10 10:00  
 10. 2000-10-10 10:00

1. 諸君の御覧に  
 2. 御覧に  
 3. 御覧に  
 4. 御覧に  
 5. 御覧に  
 6. 御覧に  
 7. 御覧に  
 8. 御覧に  
 9. 御覧に  
 10. 御覧に  
 11. 御覧に  
 12. 御覧に  
 13. 御覧に  
 14. 御覧に  
 15. 御覧に  
 16. 御覧に  
 17. 御覧に  
 18. 御覧に  
 19. 御覧に  
 20. 御覧に  
 21. 御覧に  
 22. 御覧に  
 23. 御覧に  
 24. 御覧に  
 25. 御覧に  
 26. 御覧に  
 27. 御覧に  
 28. 御覧に  
 29. 御覧に  
 30. 御覧に  
 31. 御覧に  
 32. 御覧に  
 33. 御覧に  
 34. 御覧に  
 35. 御覧に  
 36. 御覧に  
 37. 御覧に  
 38. 御覧に  
 39. 御覧に  
 40. 御覧に  
 41. 御覧に  
 42. 御覧に  
 43. 御覧に  
 44. 御覧に  
 45. 御覧に  
 46. 御覧に  
 47. 御覧に  
 48. 御覧に  
 49. 御覧に  
 50. 御覧に  
 51. 御覧に  
 52. 御覧に  
 53. 御覧に  
 54. 御覧に  
 55. 御覧に  
 56. 御覧に  
 57. 御覧に  
 58. 御覧に  
 59. 御覧に  
 60. 御覧に  
 61. 御覧に  
 62. 御覧に  
 63. 御覧に  
 64. 御覧に  
 65. 御覧に  
 66. 御覧に  
 67. 御覧に  
 68. 御覧に  
 69. 御覧に  
 70. 御覧に  
 71. 御覧に  
 72. 御覧に  
 73. 御覧に  
 74. 御覧に  
 75. 御覧に  
 76. 御覧に  
 77. 御覧に  
 78. 御覧に  
 79. 御覧に  
 80. 御覧に  
 81. 御覧に  
 82. 御覧に  
 83. 御覧に  
 84. 御覧に  
 85. 御覧に  
 86. 御覧に  
 87. 御覧に  
 88. 御覧に  
 89. 御覧に  
 90. 御覧に  
 91. 御覧に  
 92. 御覧に  
 93. 御覧に  
 94. 御覧に  
 95. 御覧に  
 96. 御覧に  
 97. 御覧に  
 98. 御覧に  
 99. 御覧に  
 100. 御覧に

1. 御覧に  
 2. 御覧に  
 3. 御覧に  
 4. 御覧に  
 5. 御覧に  
 6. 御覧に  
 7. 御覧に  
 8. 御覧に  
 9. 御覧に  
 10. 御覧に  
 11. 御覧に  
 12. 御覧に  
 13. 御覧に  
 14. 御覧に  
 15. 御覧に  
 16. 御覧に  
 17. 御覧に  
 18. 御覧に  
 19. 御覧に  
 20. 御覧に  
 21. 御覧に  
 22. 御覧に  
 23. 御覧に  
 24. 御覧に  
 25. 御覧に  
 26. 御覧に  
 27. 御覧に  
 28. 御覧に  
 29. 御覧に  
 30. 御覧に  
 31. 御覧に  
 32. 御覧に  
 33. 御覧に  
 34. 御覧に  
 35. 御覧に  
 36. 御覧に  
 37. 御覧に  
 38. 御覧に  
 39. 御覧に  
 40. 御覧に  
 41. 御覧に  
 42. 御覧に  
 43. 御覧に  
 44. 御覧に  
 45. 御覧に  
 46. 御覧に  
 47. 御覧に  
 48. 御覧に  
 49. 御覧に  
 50. 御覧に  
 51. 御覧に  
 52. 御覧に  
 53. 御覧に  
 54. 御覧に  
 55. 御覧に  
 56. 御覧に  
 57. 御覧に  
 58. 御覧に  
 59. 御覧に  
 60. 御覧に  
 61. 御覧に  
 62. 御覧に  
 63. 御覧に  
 64. 御覧に  
 65. 御覧に  
 66. 御覧に  
 67. 御覧に  
 68. 御覧に  
 69. 御覧に  
 70. 御覧に  
 71. 御覧に  
 72. 御覧に  
 73. 御覧に  
 74. 御覧に  
 75. 御覧に  
 76. 御覧に  
 77. 御覧に  
 78. 御覧に  
 79. 御覧に  
 80. 御覧に  
 81. 御覧に  
 82. 御覧に  
 83. 御覧に  
 84. 御覧に  
 85. 御覧に  
 86. 御覧に  
 87. 御覧に  
 88. 御覧に  
 89. 御覧に  
 90. 御覧に  
 91. 御覧に  
 92. 御覧に  
 93. 御覧に  
 94. 御覧に  
 95. 御覧に  
 96. 御覧に  
 97. 御覧に  
 98. 御覧に  
 99. 御覧に  
 100. 御覧に

1. 1871年11月1日  
1871年11月1日  
1871年11月1日

1. 1871年11月1日  
1871年11月1日  
1871年11月1日

1. 1871年11月1日  
1871年11月1日

1871

1. 1871年11月1日  
1871年11月1日  
1871年11月1日

1871年11月1日

Handwritten text at the top of the page.

1 1st line of handwritten text.

2 2nd line of handwritten text.

3 3rd line of handwritten text.

4 4th line of handwritten text.

5 5th line of handwritten text.

6 A small handwritten mark or character.

Large block of handwritten text, possibly a signature or a list of items, occupying the middle and bottom of the page.

7 A column of handwritten text on the left side of the page.

Handwritten text in a cursive script, possibly a list or notes.

Handwritten text in a cursive script, possibly a list or notes.

Handwritten text in a cursive script, possibly a list or notes.

Handwritten text in a cursive script, possibly a list or notes.

Small handwritten mark or character.

Handwritten text in a cursive script, possibly a list or notes.

Small handwritten mark or character.

Handwritten text in a cursive script, possibly a list or notes.

Handwritten text in a cursive script, possibly a list or notes.

Handwritten text in a cursive script, possibly a list or notes.

Handwritten text in a cursive script, possibly a list or notes.



Handwritten text in a cursive script, likely a list or account.

Handwritten text, possibly a date or a specific entry.

Handwritten text, continuing the list or account.

Handwritten text, possibly a name or a title.

Handwritten text, possibly a name or a title.

田  
山

Handwritten text, possibly a name or a title.

Handwritten text, possibly a name or a title.

Handwritten text, possibly a name or a title.

Handwritten text, possibly a name or a title.

Handwritten text, possibly a name or a title.

Handwritten text, possibly a name or a title.

Handwritten text, possibly a name or a title.

Handwritten text, possibly a name or a title.

Handwritten text, possibly a name or a title.

Handwritten text, possibly a name or a title.

Handwritten text, possibly a name or a title.

Handwritten text, possibly a name or a title.

Handwritten text, possibly a name or a title.

52

1 第拾六卷(別) 第 一 卷 第 一 號

1 第拾六卷(別) 第 一 卷 第 一 號

1 第拾六卷(別) 第 一 卷 第 一 號

1 第拾六卷(別) 第 一 卷 第 一 號

第拾六卷(別) 第 一 卷 第 一 號

1 第拾六卷(別) 第 一 卷 第 一 號

第拾六卷(別) 第 一 卷 第 一 號

第拾六卷(別) 第 一 卷 第 一 號

第拾六卷(別) 第 一 卷 第 一 號

第拾六卷(別) 第 一 卷 第 一 號

第拾六卷(別) 第 一 卷 第 一 號

第拾六卷(別) 第 一 卷 第 一 號

第拾六卷(別) 第 一 卷 第 一 號

第拾六卷(別) 第 一 卷 第 一 號

第拾六卷(別) 第 一 卷 第 一 號

第拾六卷(別) 第 一 卷 第 一 號

第拾六卷(別) 第 一 卷 第 一 號

廿四

說文

万布

和佐

鐵

鐵

鐵

鐵

鐵

鐵

鐵

鐵

鐵

鐵

鐵

鐵

鐵

鐵

鐵

鐵

鐵

鐵

鐵

鐵

鐵

鐵

鐵

鐵

鐵

鐵

鐵

鐵



一 後方谷部山麓に於て之を所居す  
一 後方谷部山麓に於て之を所居す  
一 後方谷部山麓に於て之を所居す

三 後方谷部山麓に於て之を所居す

一 後方谷部山麓に於て之を所居す

三 後方谷部山麓に於て之を所居す

三 後方谷部山麓に於て之を所居す

一 後方谷部山麓に於て之を所居す

二

一 後方谷部山麓に於て之を所居す

三 後方谷部山麓に於て之を所居す

三 後方谷部山麓に於て之を所居す

三 後方谷部山麓に於て之を所居す

三 後方谷部山麓に於て之を所居す

三 後方谷部山麓に於て之を所居す

三 後方谷部山麓に於て之を所居す

三 後方谷部山麓に於て之を所居す

Handwritten text in a cursive script, likely a list or account. The text is written in a dark ink on aged paper. It appears to be a list of items or transactions, possibly related to a business or administrative record.

Handwritten characters, possibly a signature or a specific label within the text.

Large, bold handwritten characters in a traditional Chinese style, possibly a title or a significant name.

Handwritten text in a cursive script, continuing the list or account from the top section.

Handwritten characters, possibly a signature or a specific label within the text.

Handwritten text in a cursive script, continuing the list or account from the top section.

Handwritten characters, possibly a signature or a specific label within the text.

Handwritten text in a cursive script, continuing the list or account from the top section.

本州川崎府御

御返書

一 涉格三香苗種

二 待良浦番長入

三 向陣古山番取元

一 二 三 四 五 六 七 八 九 十

一 二 三 四 五 六 七 八 九 十

立月古下 安齋

沈抄序

1 1000-100000 5 井川院 1 2000

1 2 100000 5000

1 50000 10000 5000 10000

抄

1000000

1 50000 10000 5000 10000  
50000 10000 5000 10000

1 10000 10000 5000 10000  
10000 10000 5000 10000

1 10000 10000 5000 10000  
10000 10000 5000 10000

1 10000 10000 5000 10000  
10000 10000 5000 10000

1 10000 10000 5000 10000  
10000 10000 5000 10000

1 10000 10000 5000 10000  
10000 10000 5000 10000

1 10000 10000 5000 10000  
10000 10000 5000 10000

1 10000 10000 5000 10000  
10000 10000 5000 10000

1 10000 10000 5000 10000  
10000 10000 5000 10000

1 10000 10000 5000 10000  
10000 10000 5000 10000



1 此後、所屬諸國、皆、  
一 獲、此、  
一 獲、此、

1 獲、此、  
一 獲、此、

獲、此、

獲、此、

獲、此、

獲、此、

獲、此、

獲、此、

獲、此、

1 獲、此、

獲、此、

獲、此、

獲、此、

獲、此、

1 獲、此、

獲、此、

一 二三四五

一 此後諸君請各注意

一 此後諸君請各注意

一 此後諸君請各注意

一 此後諸君請各注意

一 此後諸君請各注意

一 此後諸君請各注意

一 此後諸君請各注意

一 此後諸君請各注意

一 此後諸君請各注意

一 此後諸君請各注意

一 此後諸君請各注意

一 此後諸君請各注意

一 此後諸君請各注意

一 此後諸君請各注意

一 此後諸君請各注意

Handwritten text in a cursive script, possibly representing a list or a set of instructions. The text is written in a dark ink on aged paper.

Handwritten text, possibly a title or a section header, written in a cursive script.

Handwritten text, possibly a list or a set of instructions, written in a cursive script.

Handwritten text, possibly a list or a set of instructions, written in a cursive script.

Handwritten text, possibly a signature or a name, written in a cursive script.

Handwritten text, possibly a signature or a name, written in a cursive script.

一 為振立之事

一 初めは...

一 振立の...

一 念に...

一 念に...

一 念に...

一 念に...

一 念に...

一 念に...

一 念に...

一 念に...

楊子存心集

司寇書卷

卷之四

有存下

有存下

有存下

有存下

有存下

有存下

有存下

少戸如流

解凡一田二字三自

古事如切此

好也永信人

多事以事入河

何凡如字也

高一以二如三一四子

多事以事入河

多事以事入河

多事以事入河

信与七二字如流

大正  
廿五年

Handwritten text in a cursive script, likely a list or account. The text is written vertically and includes various characters and symbols, possibly representing names or items.

Handwritten text in a cursive script, continuing the list or account. The characters are dense and difficult to decipher without context.

Handwritten text in a cursive script, appearing as a separate entry or section. It includes several lines of text with some larger characters.

Handwritten text in a cursive script, possibly a signature or a specific entry. It features larger, more prominent characters and some decorative elements.

一 神代卷  
 二 勅使卷  
 三 勅使卷  
 四 勅使卷  
 五 勅使卷  
 六 勅使卷  
 七 勅使卷  
 八 勅使卷  
 九 勅使卷  
 十 勅使卷  
 十一 勅使卷  
 十二 勅使卷  
 十三 勅使卷  
 十四 勅使卷  
 十五 勅使卷  
 十六 勅使卷  
 十七 勅使卷  
 十八 勅使卷  
 十九 勅使卷  
 二十 勅使卷  
 二十一 勅使卷  
 二十二 勅使卷  
 二十三 勅使卷  
 二十四 勅使卷  
 二十五 勅使卷  
 二十六 勅使卷  
 二十七 勅使卷  
 二十八 勅使卷  
 二十九 勅使卷  
 三十 勅使卷  
 三十一 勅使卷  
 三十二 勅使卷  
 三十三 勅使卷  
 三十四 勅使卷  
 三十五 勅使卷  
 三十六 勅使卷  
 三十七 勅使卷  
 三十八 勅使卷  
 三十九 勅使卷  
 四十 勅使卷  
 四十一 勅使卷  
 四十二 勅使卷  
 四十三 勅使卷  
 四十四 勅使卷  
 四十五 勅使卷  
 四十六 勅使卷  
 四十七 勅使卷  
 四十八 勅使卷  
 四十九 勅使卷  
 五十 勅使卷  
 五十一 勅使卷  
 五十二 勅使卷  
 五十三 勅使卷  
 五十四 勅使卷  
 五十五 勅使卷  
 五十六 勅使卷  
 五十七 勅使卷  
 五十八 勅使卷  
 五十九 勅使卷  
 六十 勅使卷  
 六十一 勅使卷  
 六十二 勅使卷  
 六十三 勅使卷  
 六十四 勅使卷  
 六十五 勅使卷  
 六十六 勅使卷  
 六十七 勅使卷  
 六十八 勅使卷  
 六十九 勅使卷  
 七十 勅使卷  
 七十一 勅使卷  
 七十二 勅使卷  
 七十三 勅使卷  
 七十四 勅使卷  
 七十五 勅使卷  
 七十六 勅使卷  
 七十七 勅使卷  
 七十八 勅使卷  
 七十九 勅使卷  
 八十 勅使卷  
 八十一 勅使卷  
 八十二 勅使卷  
 八十三 勅使卷  
 八十四 勅使卷  
 八十五 勅使卷  
 八十六 勅使卷  
 八十七 勅使卷  
 八十八 勅使卷  
 八十九 勅使卷  
 九十 勅使卷  
 九十一 勅使卷  
 九十二 勅使卷  
 九十三 勅使卷  
 九十四 勅使卷  
 九十五 勅使卷  
 九十六 勅使卷  
 九十七 勅使卷  
 九十八 勅使卷  
 九十九 勅使卷  
 一百 勅使卷



三子如也

三子

三子如也 三子如也

三子如也 三子如也

三子如也 三子如也

三子如也 三子如也

三子如也 三子如也

三子如也 三子如也

三子如也 三子如也

三子如也

三子如也

三子如也

三子如也

三子如也

三子如也

一喜海条

...

...

...

...

...

...

...

...

...

...

...

...

...

...

...

...

...

...

...

...

...

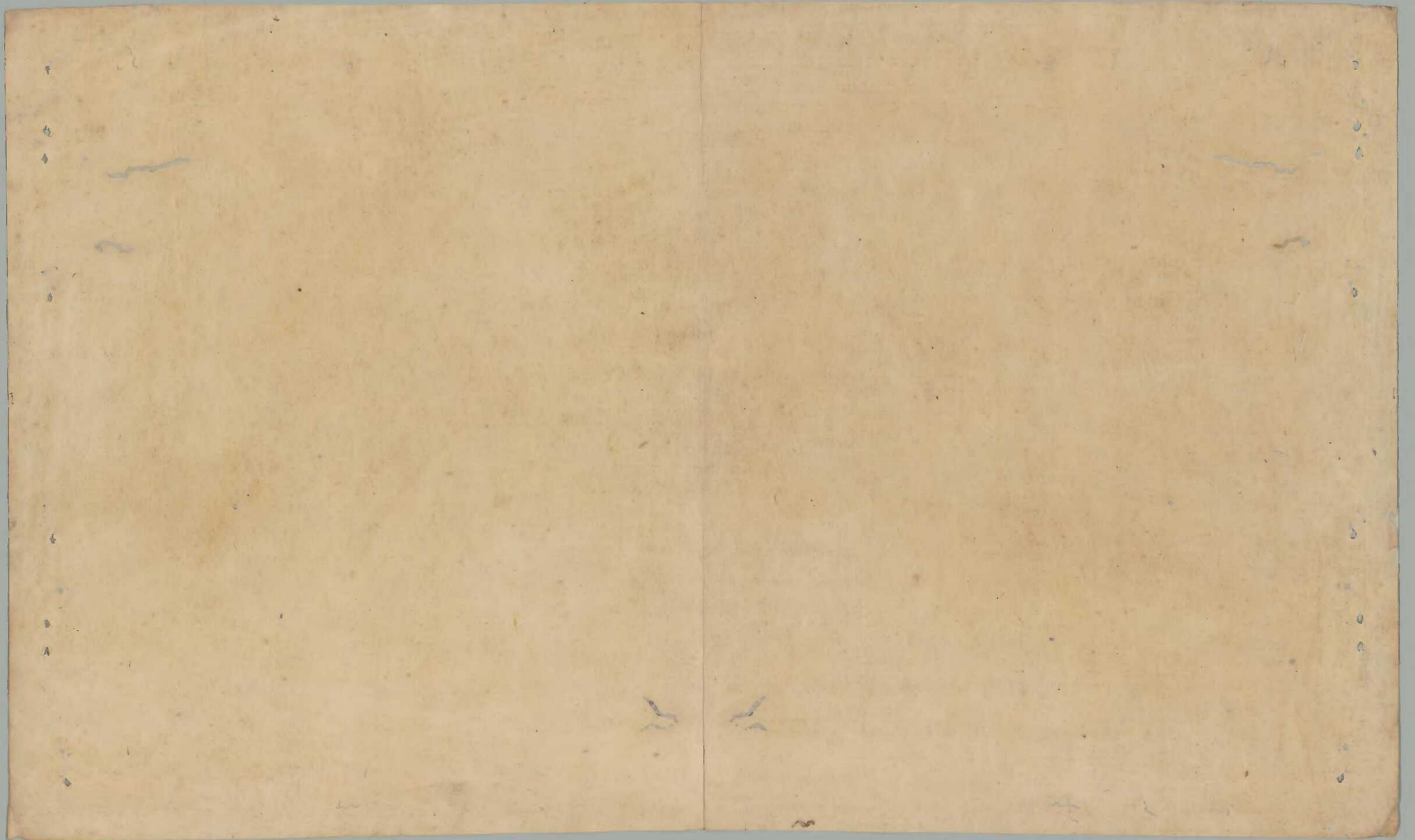
...

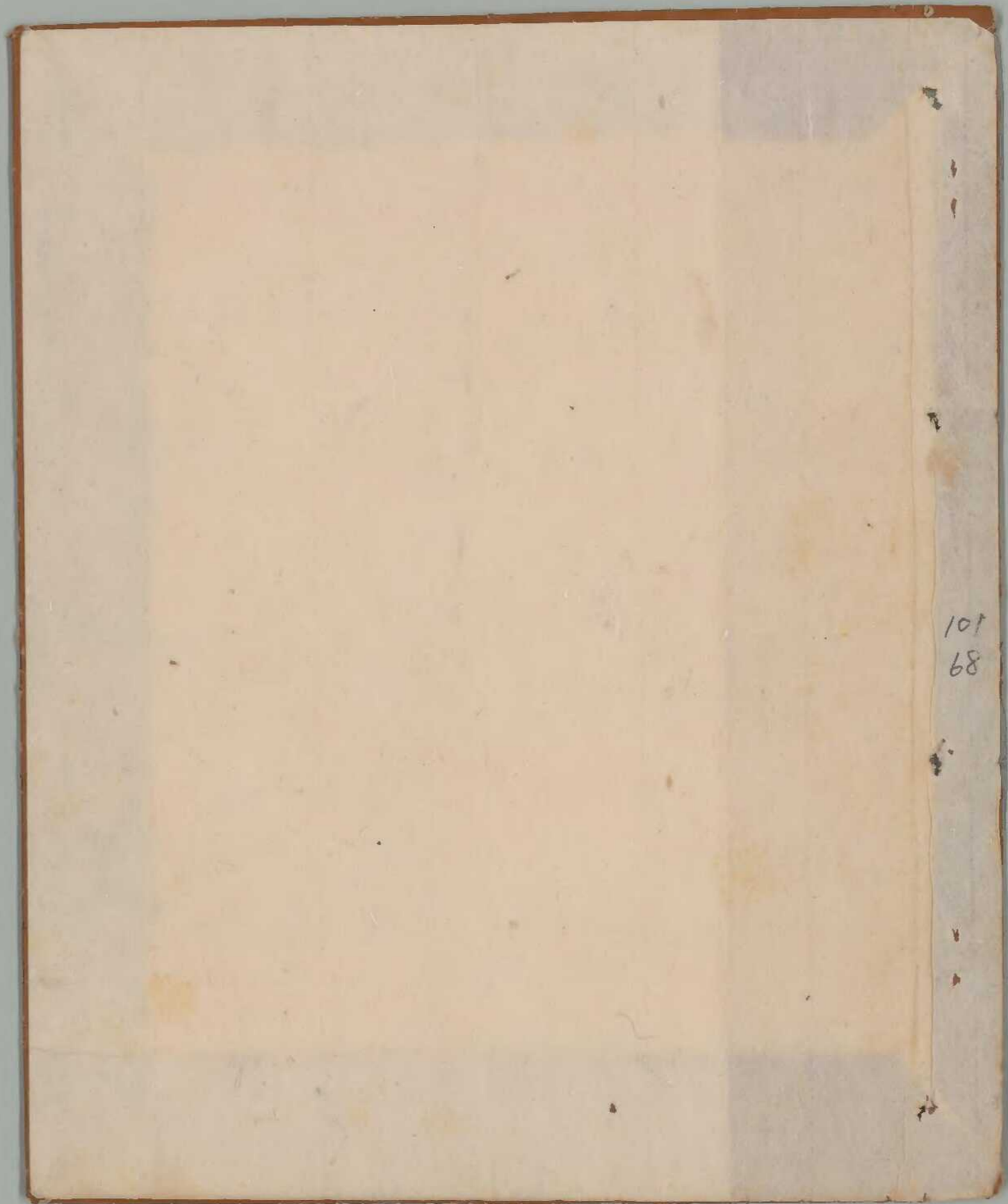
...

...

...

101  
67





101  
68

