

安位寺殿御自記

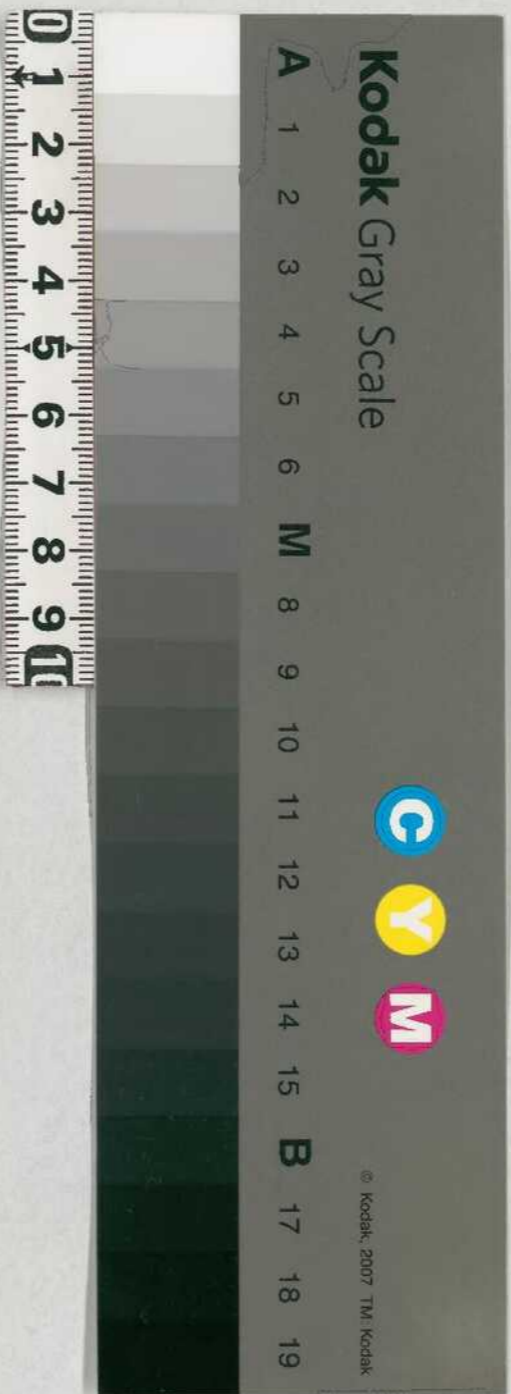
四十七
中十六

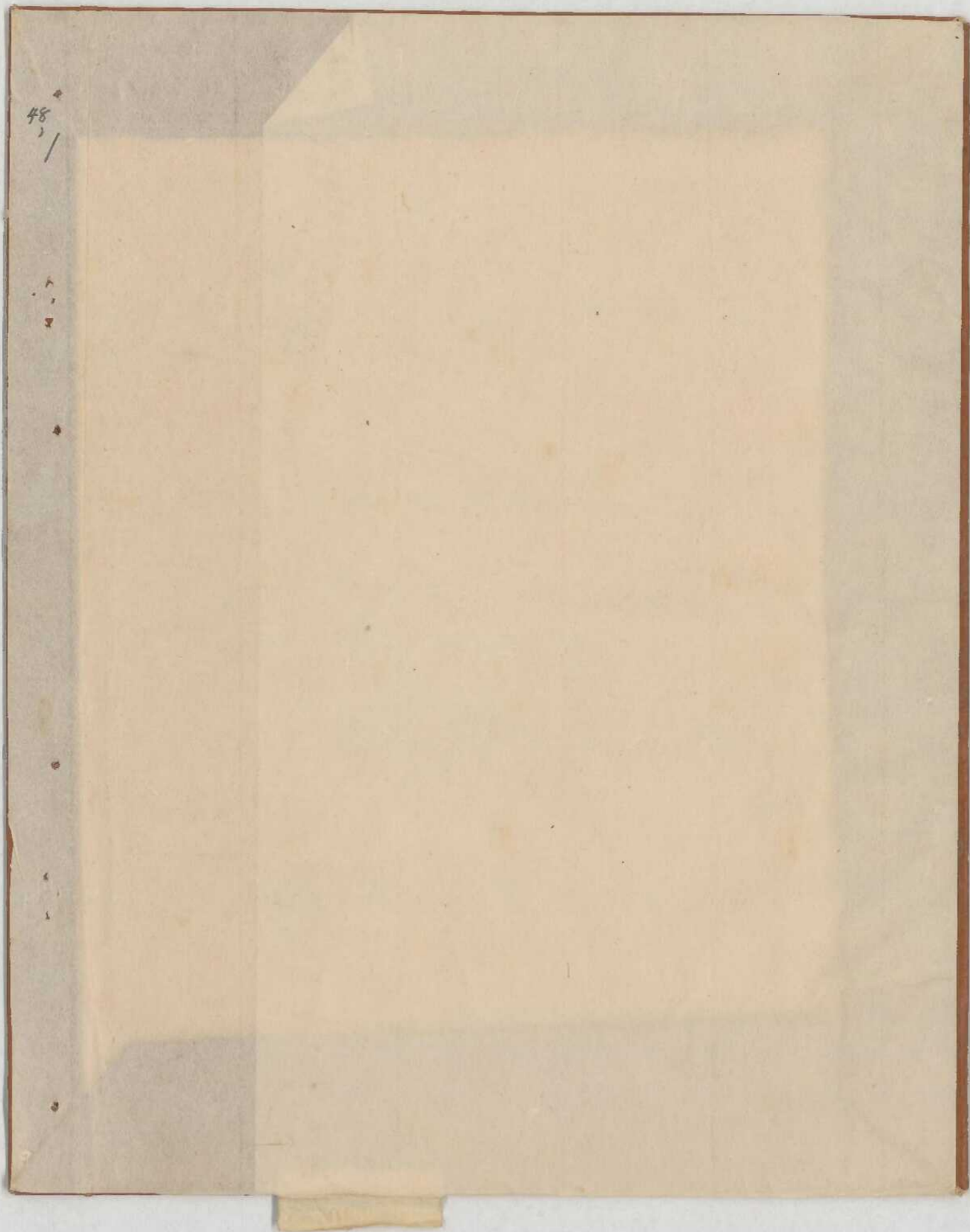
古文書

一九函共八三
三五九號

内閣文庫	
番號	和 20909
冊數	82 (48)
函號	古 19 359

安位寺殿御自記





共全一
庚辰年正月
日

雜記
才三
不
中



川口 信長 御書

御書

川口 信長 御書

川口 信長 御書

川口 信長 御書

川口 信長 御書

土月大

十八日

一 新中御之中新大早之清所上之方
 多礼之なる事不事申下之明心之之方
 一 出治者治并之入土之計出治者
 一 極是之なる如思之之能事行

十九日

一 御所に御座りて御所御力政付御心
 一 御所之御座りて御所御心之御心
 一 御所之御座りて御所御心

二十日

一 御所之御座りて御所御心
 一 御所之御座りて御所御心
 一 御所之御座りて御所御心

二十一

一 御所之御座りて御所御心
 一 御所之御座りて御所御心
 一 御所之御座りて御所御心

廿二日

一 御所之御座りて御所御心
 一 御所之御座りて御所御心
 一 御所之御座りて御所御心

ひさし

一と初し空方法師一三浦五師一人其の
寺所在定して信託す所難打直事
ゆき方長共事主替り世行の家神
五方相の如くありしに其の如く
同中しゆの今行る事御して作
二初めゆり退却す

初初と三浦五師一別今五師
初寺所事述了(以)中折定より
ゆき方長共事主替り世行の家神
五方相の如くありしに其の如く
同中しゆの今行る事御して作

寺に(一)初初と三浦五師一別今五師
初寺所事述了(以)中折定より
ゆき方長共事主替り世行の家神
五方相の如くありしに其の如く
同中しゆの今行る事御して作

江口作舟...
 文...
 言...

一 同...
 一 行...

一 行...

一 舟...
 一 舟...
 一 舟...

廿日...

一 舟...

舟...

一 為之見因之由之

一 抄海事奴子等行廻路以之良之定

廿三日 出部律師本御直事之抄物之

一 本御子之抄及抄之在案方より

一 請又御地ころか

一 本御 本御 高より 字は行

高月舟

一 本御子之抄

一 本御子之抄

一 本御子之抄

一 本御子之抄

一 本御子之抄

一 本御子之抄

一 本御子之抄

一 本御子之抄

一 本御子之抄

夫已... 勿... 上...
 上... 上... 上...
 上... 上... 上...
 上... 上... 上...
 上... 上... 上...

史目

王... 史... 史...
 史... 史... 史...
 史... 史... 史...
 史... 史... 史...
 史... 史... 史...

御... 史... 史...
 史... 史... 史...
 史... 史... 史...
 史... 史... 史...
 史... 史... 史...

史... 史... 史...
 史... 史... 史...
 史... 史... 史...
 史... 史... 史...

一 神皇正統記 卷之四 神代卷 神代卷 神代卷

神代卷 神代卷 神代卷 神代卷 神代卷

神代卷 神代卷 神代卷 神代卷 神代卷

神代卷 神代卷 神代卷 神代卷 神代卷

神代卷 神代卷 神代卷 神代卷 神代卷

神代卷 神代卷 神代卷 神代卷 神代卷

神代卷 神代卷 神代卷 神代卷 神代卷

神代卷 神代卷 神代卷 神代卷 神代卷

神代卷 神代卷 神代卷 神代卷 神代卷

神代卷 神代卷 神代卷 神代卷 神代卷

神代卷 神代卷 神代卷 神代卷 神代卷

神代卷 神代卷 神代卷 神代卷 神代卷

神代卷 神代卷 神代卷 神代卷 神代卷

神代卷 神代卷 神代卷 神代卷 神代卷

神代卷 神代卷 神代卷 神代卷 神代卷

神代卷 神代卷 神代卷 神代卷 神代卷

神代卷 神代卷 神代卷 神代卷 神代卷

神代卷 神代卷 神代卷 神代卷 神代卷

神代卷 神代卷 神代卷 神代卷 神代卷

神代卷 神代卷 神代卷 神代卷 神代卷

11
48
11
シの方々同様に...
土に...
...
一 区...
...

九回

一 若大...
...
...

一 若大...
...
...

...

三月八日

初日舟中幸平山に遊覧す

四方橋を遊覧す

一方池を遊覧す

一方池を遊覧す

一方池を遊覧す

一方池を遊覧す

一方池を遊覧す

一方池を遊覧す

一方池を遊覧す

一方池を遊覧す

一方池を遊覧す

一方池を遊覧す

一方池を遊覧す

一方池を遊覧す

一方池を遊覧す

一方池を遊覧す

一方池を遊覧す

一方池を遊覧す

一方池を遊覧す

一方池を遊覧す

一方池を遊覧す

一方池を遊覧す

一方池を遊覧す

一方池を遊覧す

一方池を遊覧す

一方池を遊覧す

二日并

仁彦事...
津守...
郡...
...

一...
...

一...
...

一...
...

一...
...

一...
...

一...
...

三日并

津守...
...

一...
...

一...
...

一...
...

一...
...

一...
...

一...
...

一...
...

一...
...

一 諸君の御覧に...
 一 御覧に...
 一 御覧に...
 一 御覧に...
 一 御覧に...
 一 御覧に...
 一 御覧に...
 一 御覧に...
 一 御覧に...
 一 御覧に...
 一 御覧に...
 一 御覧に...

45 15

一 御覧に...
 一 御覧に...
 一 御覧に...
 一 御覧に...
 一 御覧に...
 一 御覧に...
 一 御覧に...
 一 御覧に...
 一 御覧に...
 一 御覧に...
 一 御覧に...
 一 御覧に...

三十一

一 此節海云々事いふは由乃にあらざる下
 ちうしあはれなるもの共もさういふ文
 りあつちりさるる能く可力さる人同
 ちまら

七月并
 一 此節海云々事いふは由乃にあらざる下
 ちうしあはれなるもの共もさういふ文
 りあつちりさるる能く可力さる人同
 ちまら

八日
 羊物入千女

一 此節海云々事いふは由乃にあらざる下
 ちうしあはれなるもの共もさういふ文
 りあつちりさるる能く可力さる人同
 ちまら

梅はてわらわの節は
 物多物と且物中住所と観て免るるは
 ぬ切ゆ

一 此節海云々事いふは由乃にあらざる下
 ちうしあはれなるもの共もさういふ文
 りあつちりさるる能く可力さる人同
 ちまら

Handwritten text at the top of the right page, possibly a header or title.

Main body of handwritten text on the right page, written in a dense, cursive style.

三日月

Main body of handwritten text on the left page, continuing the cursive script.

Handwritten text in cursive style, likely a letter or document fragment.

Handwritten text in cursive style, continuing the previous section.

Handwritten text in cursive style, continuing the previous section.

Handwritten text in cursive style, continuing the previous section.

Handwritten text in cursive style, continuing the previous section.

Handwritten text in cursive style, continuing the previous section.

Handwritten text in cursive style, continuing the previous section.

Handwritten text in cursive style, continuing the previous section.

Handwritten text in cursive style, continuing the previous section.

Handwritten text in cursive style, continuing the previous section.

Handwritten text in cursive style, continuing the previous section.

Handwritten text in cursive style, continuing the previous section.

大目

一 皇聖御孫... 惟此御孫... 惟此御孫... 惟此御孫...

一 清原公孫... 惟此御孫... 惟此御孫... 惟此御孫...

一 皇孫御孫... 惟此御孫... 惟此御孫... 惟此御孫...

皇孫御孫

大目玉

一 惟此御孫... 惟此御孫... 惟此御孫... 惟此御孫...

一 皇孫御孫... 惟此御孫... 惟此御孫... 惟此御孫...

一 皇孫御孫... 惟此御孫... 惟此御孫... 惟此御孫...

一 皇孫御孫... 惟此御孫... 惟此御孫... 惟此御孫...

一 皇孫御孫... 惟此御孫... 惟此御孫... 惟此御孫...

一 皇孫御孫... 惟此御孫... 惟此御孫... 惟此御孫...

命式書

卯申... 卯申... 卯申... 卯申... 卯申...
 卯申... 卯申... 卯申... 卯申... 卯申...
 卯申... 卯申... 卯申... 卯申... 卯申...
 卯申... 卯申... 卯申... 卯申... 卯申...
 卯申... 卯申... 卯申... 卯申... 卯申...
 卯申... 卯申... 卯申... 卯申... 卯申...
 卯申... 卯申... 卯申... 卯申... 卯申...
 卯申... 卯申... 卯申... 卯申... 卯申...
 卯申... 卯申... 卯申... 卯申... 卯申...
 卯申... 卯申... 卯申... 卯申... 卯申...

卯申... 卯申... 卯申... 卯申... 卯申...

卯申... 卯申... 卯申... 卯申... 卯申...

卯申... 卯申... 卯申... 卯申... 卯申...

卯申... 卯申... 卯申... 卯申... 卯申...

卯申... 卯申... 卯申... 卯申... 卯申...

卯申... 卯申... 卯申... 卯申... 卯申...

卯申... 卯申... 卯申... 卯申... 卯申...

卯申... 卯申... 卯申... 卯申... 卯申...

卯申... 卯申... 卯申... 卯申... 卯申...

卯申... 卯申... 卯申... 卯申... 卯申...

卯申... 卯申... 卯申... 卯申... 卯申...

卯申... 卯申... 卯申... 卯申... 卯申...

卯申... 卯申... 卯申... 卯申... 卯申...

48, 22

一 点且今与海河也西河等事

返河通之

占其今海河奇

美采

野孔通

美選

同野孔通

貞者

之柏

西亦

之東

宜者

東心

主矣

心

行矣

心

元采

心

右河之

心

実心之

別由也

一 意

一 西

一 而

一 中

一 上

一 主

一 主

十八日...
 十一日...
 十日...
 九日...

一 檢...
 一 新...

古月三研

一 研...
 一 研...
 一 研...

抄り申すの
極筆し極上
昔日
時又
未
四
少
相
け
首
美
美
子
常

昔日
時又
未
四
少
相
け
首
美
美
子
常

未
四
少
相
け
首
美
美
子
常

少
相
け
首
美
美
子
常

相
け
首
美
美
子
常

け
首
美
美
子
常

首
美
美
子
常

美
美
子
常

美
美
子
常

美
美
子
常

美
美
子
常

傳者取中... 此の具其のま

一 末个... 本は... 初と作中... 之は... 仰り... 一箇... 長... 之... 中...

一 行子... 何れ... 一箇... 長... 之... 中...

一 粟...

長... 一...

一 末...

長... 一...

一 中...

一 句...

一 初...

一 万...

一 初...

一 迷...

一 江戸に於ては、徳川幕府の治世に於て

江戸に於ては、

一 江戸に於ては、

一 江戸に於ては、

一 江戸に於ては、

一 江戸に於ては、

一 江戸に於ては、

一 江戸に於ては、

一 江戸に於ては、

一 江戸に於ては、

一 江戸に於ては、

一 江戸に於ては、

一 江戸に於ては、

一 江戸に於ては、

一 江戸に於ては、

一 江戸に於ては、

一 江戸に於ては、

一 江戸に於ては、

一 江戸に於ては、

一 江戸に於ては、

廿三日大痛解

首名書任下 友人 士市 へりし 時より

と下 之 以 事 柳 録 記 言 行 中 方 へん

了 也 漸 中 心 字 書 抄 也 了 金 五 貫 代

州 抄 別 了 又 方 南 利 而 也 下 午 へん

事 同 詔 中 了 之 也 以 火 下 作 午 初 夜 子

わ ぶ へん 了

一 号 系 中 抄 書 心 字 書 抄 力 行 思 惟 信 了

上 抄 了 之 柳 録 記 言 行 中 方 へん 了 事 同 詔

二

一

一

一

廿日三晴

于 刻 力 行 也 思 之 也 柳 録 記 言 行 中 方 へん 了 事 同 詔

初 年 抄 了 之 柳 録 記 言 行 中 方 へん 了 事 同 詔

一 及 暇 名 抄 書 心 字 書 抄 力 行 思 惟 信 了

抄 了 之 柳 録 記 言 行 中 方 へん 了 事 同 詔

抄 了 之 柳 録 記 言 行 中 方 へん 了 事 同 詔

抄 了 之 柳 録 記 言 行 中 方 へん 了 事 同 詔

Handwritten text in the top right margin, possibly a date or reference number.

後補通目代ツ中程

形夫有目ツ中程

省了金波村ツ中程

立行簿

三月廿日行簿ツ中程

Handwritten text in a cursive script, likely a list or account, written on the right page of the manuscript.

Handwritten text in a cursive script, including a large vertical character '給' (giving) and other illegible characters, written on the right page.

Handwritten text in a cursive script, continuing the list or account, written on the right page.

Handwritten text in a cursive script, including a large vertical character '給' (giving) and other illegible characters, written on the left page.

Handwritten text in a cursive script, including a large vertical character '給' (giving) and other illegible characters, written on the left page.

Handwritten characters '十四' (14) and '十' (10) at the bottom of the left page.

Handwritten text in a cursive script, likely a historical document or manuscript. The text is written in a dark ink on aged, yellowish paper. It appears to be a list or a series of entries, possibly related to a collection or inventory. The characters are somewhat stylized and difficult to decipher without a key.

序

Handwritten text in a cursive script, continuing from the previous page. The text is written in a dark ink on aged, yellowish paper. It appears to be a list or a series of entries, possibly related to a collection or inventory. The characters are somewhat stylized and difficult to decipher without a key.

又勅令下河内郡

乃領清土領

下
領
領
領

領
領
領
領

領
領
領
領

領
領
領
領

領
領
領
領

領
領
領
領

向一寺都力西低其領

中一持力西國

物中一得

中一得

中一得

中一得

中一得

中一得

中一得

中一得

中一得

中一得

中一得

中一得

中一得

中一得

Handwritten text in a cursive script, likely German. The text is written on a single page and appears to be a letter or a document. The script is highly stylized and difficult to decipher. The text is written in black ink on aged, yellowish paper.

Handwritten text in a cursive script, likely German, continuing from the previous page. The text is written on a single page and appears to be a letter or a document. The script is highly stylized and difficult to decipher. The text is written in black ink on aged, yellowish paper.

Handwritten text in a cursive script, likely a letter or document. The text is written in a dark ink on aged, yellowish paper. It begins with a decorative flourish and contains several lines of text, some of which are crossed out or heavily scribbled over. The script is dense and difficult to decipher without a key.

1 Maximilian
Handwritten text in a cursive script, likely a letter or document. It begins with a decorative flourish and contains several lines of text, some of which are crossed out or heavily scribbled over.

Handwritten text in a cursive script, likely a letter or document. It begins with a decorative flourish and contains several lines of text, some of which are crossed out or heavily scribbled over. The text is dense and difficult to decipher without a key.

Handwritten musical notation on two pages of aged paper. The notation consists of several staves of notes and rests, written in a cursive, handwritten style. The ink is dark, and the paper shows signs of age and wear. The notation is dense and fills most of the page area.

Handwritten text in a cursive script, likely a historical document or manuscript. The text is written on aged, yellowed paper and is organized into several lines on both pages. The script is highly stylized and difficult to decipher. The document appears to be a list or a series of entries, with some lines starting with a vertical stroke. The text is written in a dark ink, possibly iron gall or a similar historical ink. The paper shows signs of wear, including creases and discoloration.

Handwritten text in a cursive script, likely a historical document or manuscript. The text is written on aged, yellowed paper with visible creases and some damage. The script is dense and fills most of the page. The text is written in a cursive style, possibly a form of Japanese calligraphy or a historical script. The paper shows signs of age, including yellowing and some physical damage like tears and creases. The text is arranged in several columns, with some lines starting with a vertical line or a small mark. The overall appearance is that of an old, well-used manuscript.

Handwritten Japanese text in cursive style (sōsho), likely a letter or document. The text is densely packed and runs vertically down the page. The paper shows signs of age, including creases and discoloration. The characters are written in black ink on a light-colored, aged paper background. The text is organized into several vertical columns, with some characters appearing larger and more prominent than others, possibly indicating a title or key points. The overall appearance is that of a historical manuscript or a personal letter from the Edo or Meiji periods.

Handwritten text in the top right corner, possibly a date or header.

Main body of handwritten text in cursive style, covering most of the page.

Handwritten text in the bottom left corner, possibly a signature or footer.

Handwritten Japanese text in cursive style (sōsho) on aged paper. The text is arranged in vertical columns, reading from right to left. The ink is dark, and the paper shows signs of age and wear, including some staining and discoloration. The characters are fluid and connected, typical of the cursive style. The text appears to be a formal document or a letter, possibly related to a historical event or a personal correspondence. The right page contains approximately 15 columns of text, while the left page contains approximately 12 columns. The overall appearance is that of a well-preserved but aged historical manuscript.

Handwritten text in a cursive script, likely a list or account. The text is written vertically and includes various characters and symbols, possibly representing numbers or specific items.

心 流 筆 下 家 家 一 年

Handwritten text, possibly a signature or a specific entry, written in a cursive style.

Handwritten text, possibly a list or account, written in a cursive style. The text is dense and difficult to decipher due to the script.

Handwritten text, possibly a list or account, written in a cursive style. The text is dense and difficult to decipher due to the script.

Handwritten Japanese text in cursive style (sōsho), covering both pages of the document. The text is dense and difficult to decipher due to the cursive nature of the script.

Handwritten Japanese text in cursive style (sōsho), likely a letter or document. The text is written on aged, yellowed paper with some damage and bleed-through from the reverse side. The characters are dense and difficult to decipher due to the cursive nature and some fading.

Handwritten Japanese text in cursive style (sōsho) on aged, damaged paper. The text is densely packed and runs vertically down the page. The paper shows significant wear, including tears and discoloration, particularly along the right edge and in the center fold. The characters are dark ink on a light brown background.

Handwritten Japanese text in cursive style (sōsho), spanning two pages of aged paper. The text is densely packed and includes several vertical lines of characters. The paper shows signs of wear, including tears and discoloration.

Handwritten text in a cursive script, likely a historical document or manuscript. The text is written on aged, yellowed paper and is organized into several vertical columns. The characters are dense and difficult to decipher without specialized knowledge of the script.

一 奉院元主信 并二

天福元年三月廿五日 長有

宣到來 禱物 祈 幼 禱 祈 禱

下 祈 禱

願 寺 慈 信 才 之 祈

元亨三年九月九日 於 禱 院 之 祈

長 有 宣 祈 禱 物 祈 幼 禱 祈 禱

禱 祈 禱 祈 禱

奉 院 元 主 信 并 二

元亨三年八月廿一日 於 禱 院 之 祈

長 有 宣 祈 禱 物 祈 幼 禱 祈 禱

禱 祈 禱 祈 禱

大 奉 院 元 主 信 并 二

應 永 元 年 三 月 廿 日 於 禱 院 之 祈

長 有 宣 祈 禱 物 祈 幼 禱 祈 禱

禱 祈 禱 祈 禱

大 奉 院 元 主 信 并 二

應 永 元 年 三 月 廿 日 於 禱 院 之 祈

長 有 宣 祈 禱 物 祈 幼 禱 祈 禱

禱 祈 禱 祈 禱

1. The word 'shame' is written in the first column.
The second column contains the characters '羞耻' (shame) in large, bold strokes.
The third column contains the characters '耻' (shame) and '辱' (humiliation) written smaller.

1. The word 'shame' is written in the first column.
The second column contains the characters '羞耻' (shame) in large, bold strokes.
The third column contains the characters '耻' (shame) and '辱' (humiliation) written smaller.

1. The word 'shame' is written in the first column.
The second column contains the characters '羞耻' (shame) in large, bold strokes.
The third column contains the characters '耻' (shame) and '辱' (humiliation) written smaller.

The words '羞耻' (shame) are written vertically on the left side of the page.

Handwritten text in a cursive script, possibly a mix of Latin and Chinese characters, located on the right page of the manuscript.

Handwritten text in a cursive script, possibly a mix of Latin and Chinese characters, located on the right page of the manuscript.

Handwritten text in a cursive script, possibly a mix of Latin and Chinese characters, located on the right page of the manuscript.

Handwritten text in a cursive script, possibly a mix of Latin and Chinese characters, located on the right page of the manuscript.

Handwritten text in a cursive script, possibly a mix of Latin and Chinese characters, located on the left page of the manuscript.

多保方三光

其後井上

之以下

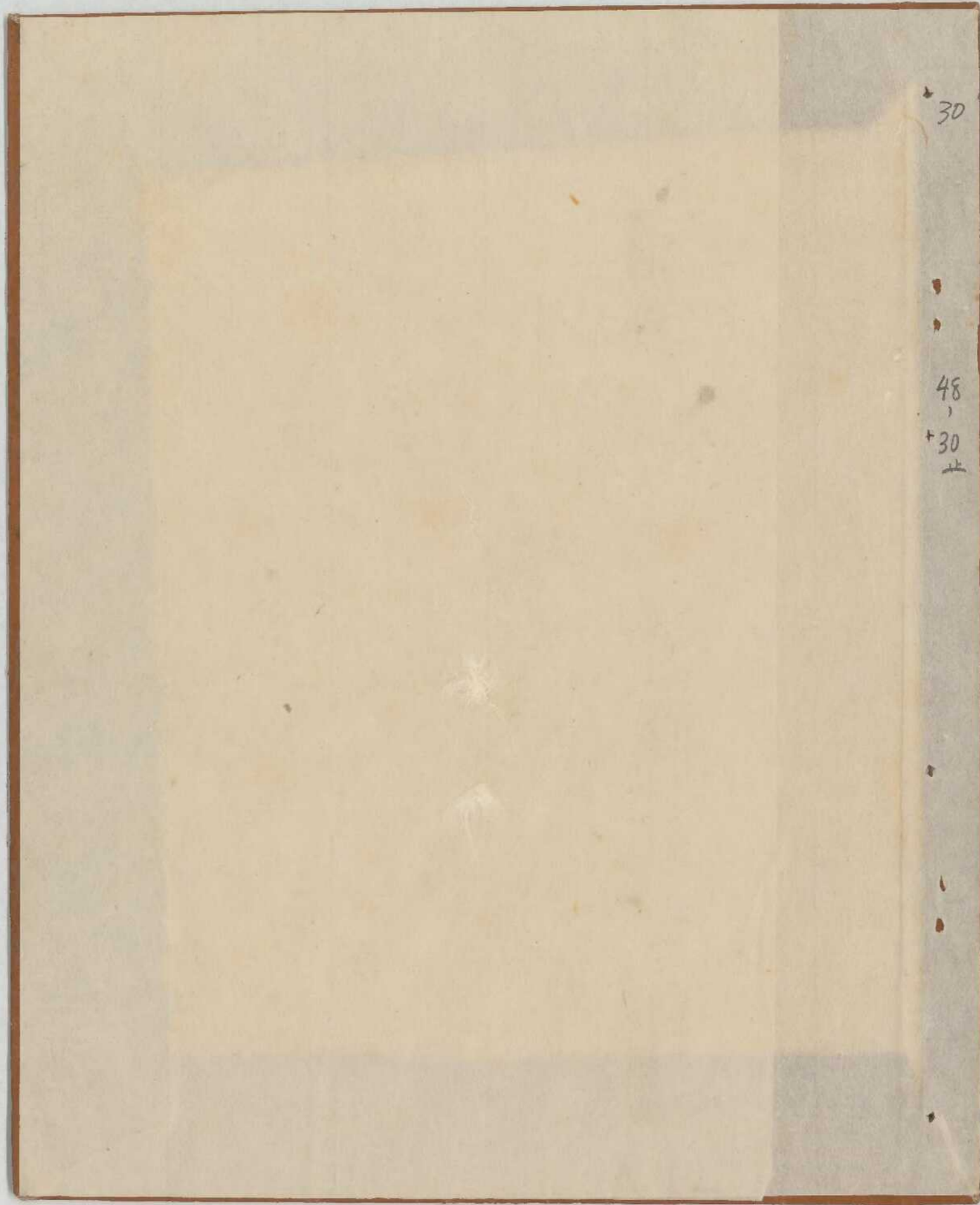
之

也

之

Handwritten text in a cursive style, likely a signature or a note, written on aged, stained paper. The text is difficult to decipher due to the cursive nature and the condition of the document.

Small handwritten mark or signature at the bottom left corner.



30

48

30

