

安位寺殿御自記

木十六

古文書

一九三九
函共八三
三五九號

内閣文庫	
番號	和 20909
冊數	82 (68)
函號	古 19 359



68
/

三九三
共八十二

年号子部
应仁元年

應仁元年

安住寺殿中自筆日記記

大衆院



68/2

68
3

自置屠士の心文回年

以應仁元音

辛巳年 乙應仁元
甲辰庚辰 亥方九生

Handwritten cursive text, partially obscured by damage.

Handwritten cursive text, partially obscured by damage.

八日小... 藏

相七

千徳百福幸甚

五刻前 勿得問之元自後千之

中車候下

初更之候少死候下

上心死白布 露病 多之候

且山堂之主席中

其作人下 未候下

紙名之

古希

古希 西朝 蓬程

中希 御物

中希 御物

二日

中希 御物

中希 御物

二日

68 / 5

一、
大由亦上流
谷親
さ
三

七日
とを
禊
浄
を
ま
す

八日
子
師
九
十
友
尚

十日
子
師
十
友
尚

十一日
子
師
十
友
尚

十二日
子
師
十
友
尚

十三日
子
師
十
友
尚

68
5

一書
光日
中

廿日

昨日
昨日

廿日

昨日
昨日

廿日

廿三日

城

一

細川

合

成

成

一 清以の事は了りて七月五日の景事
 一 成三の事は了りて此致の事
 一 行貴の事は了りて此致の事
 一 信之の事は了りて此致の事

一 清以の事は了りて七月五日の景事
 一 成三の事は了りて此致の事
 一 行貴の事は了りて此致の事
 一 信之の事は了りて此致の事

一 清以の事は了りて七月五日の景事
 一 成三の事は了りて此致の事
 一 行貴の事は了りて此致の事
 一 信之の事は了りて此致の事

一 清以の事は了りて七月五日の景事
 一 成三の事は了りて此致の事
 一 行貴の事は了りて此致の事
 一 信之の事は了りて此致の事

一 清以の事は了りて七月五日の景事
 一 成三の事は了りて此致の事
 一 行貴の事は了りて此致の事
 一 信之の事は了りて此致の事

68
15
28

一 物引打本紙... 申

入 底所... 申 極

物 申... 申

打 申... 申

之 申... 申

申 申... 申

一 長... 申

菜 申... 申

葉 申... 申

一 入... 申

申 申... 申

申 申... 申

十日... 申

申 申... 申

申 申... 申

申 申... 申

一 三... 申

申 申... 申

申 申... 申

申 申... 申

長門守御所御書

一 出く池

一 小治云

一 初既

一 亦一

一 室作

一 神云

一 中

一 京

一 此

十四

一 全才
一 宋の
一 類一
一 正陽
一 貞利
一 初
一 又
一 如
一 字
一 門

北窓子

勤

十日甲戌舟
昨日も柳舟の風情はよく船中の
中住は清方は終つた
中住は清方は終つた
中住は清方は終つた

十日乙未舟
昨日も柳舟の風情はよく船中の
中住は清方は終つた
中住は清方は終つた
中住は清方は終つた

十日丙申舟
昨日も柳舟の風情はよく船中の
中住は清方は終つた
中住は清方は終つた
中住は清方は終つた

Handwritten text on the right edge of the paper, partially obscured by a hole.

Handwritten text in the upper right section, including the characters '達' and '信'.

Handwritten text in the middle right section, including the characters '今日' and '信'.

Handwritten text in the lower right section, including the characters '一' and '信'.

Handwritten text in the middle left section, including the characters '一' and '信'.

Handwritten text in the lower left section, including the characters '一' and '信'.

Handwritten text in the middle section, including the characters '一' and '信'.

Handwritten text in the lower middle section, including the characters '一' and '信'.

Handwritten text in the middle section, including the characters '一' and '信'.

Handwritten text in the lower left section, including the characters '一' and '信'.

Red seal or mark at the bottom right of the page.

68, 19, 68

高田守之助 初春の節 下吉野

東都事の中核

入部

去日

下感

一多

行

一

一

一

寸

一

一

一

一

一

一

一

一

お打のさし

大守の御用ひり。少の御用ひり。三つ様

お打の御用ひり。お打の御用ひり。お打の御用ひり

お打の御用ひり。お打の御用ひり。お打の御用ひり

お打の御用ひり。お打の御用ひり。お打の御用ひり

お打の御用ひり。お打の御用ひり。お打の御用ひり

お打の御用ひり。お打の御用ひり。お打の御用ひり

お打の御用ひり。お打の御用ひり。お打の御用ひり

お打の御用ひり。お打の御用ひり。お打の御用ひり

お打の御用ひり。お打の御用ひり。お打の御用ひり

お打の御用ひり。お打の御用ひり。お打の御用ひり

お打の御用ひり。お打の御用ひり。お打の御用ひり

お打の御用ひり。お打の御用ひり。お打の御用ひり

お打の御用ひり。お打の御用ひり。お打の御用ひり

お打の御用ひり。お打の御用ひり。お打の御用ひり

お打の御用ひり。お打の御用ひり。お打の御用ひり

お打の御用ひり。お打の御用ひり。お打の御用ひり

お打の御用ひり。お打の御用ひり。お打の御用ひり

お打の御用ひり。お打の御用ひり。お打の御用ひり

お打の御用ひり。お打の御用ひり。お打の御用ひり

お打の御用ひり。お打の御用ひり。お打の御用ひり

お打の御用ひり。お打の御用ひり。お打の御用ひり

お打の御用ひり。お打の御用ひり。お打の御用ひり

お打の御用ひり。お打の御用ひり。お打の御用ひり

お打の御用ひり。お打の御用ひり。お打の御用ひり

お打の御用ひり。お打の御用ひり。お打の御用ひり

お打の御用ひり。お打の御用ひり。お打の御用ひり

お打の御用ひり。お打の御用ひり。お打の御用ひり

九

Handwritten text on the right edge of the page, possibly a title or marginal note.

Main body of handwritten text on the right page, written in cursive style. The text is dense and covers most of the page area.

Main body of handwritten text on the left page, written in cursive style. The text is dense and covers most of the page area.

九月五日并

力月日思

推治十末

力秩方初向走

力出言陋求

屋体方去

力回降

力合

力

力

力

力

力

力

力

力

力

力

力

力

力

力

力

力

一 勿得関士前
 一 如大前月日... 海邊... 江浦...
 一 海百... 古... 白...
 一 十... 甲...

三

一 十日... 角...
 一 一... 元...
 一 一... 元...
 一 一... 元...

一 請... 一...
 一 一... 一...
 一 一... 一...
 一 一... 一...

廿二日

...

普賢院... 松... 魚...
廿三

Handwritten notes in cursive script, partially obscured by a white circular mark.

高日丁... 地... 普...
廿三

Handwritten notes in cursive script, partially obscured by a white circular mark.

Handwritten notes in cursive script, partially obscured by a white circular mark.

Handwritten notes in cursive script, partially obscured by a white circular mark.

Handwritten notes in cursive script, partially obscured by a white circular mark.

Handwritten notes in cursive script, partially obscured by a white circular mark.

Handwritten notes in cursive script, partially obscured by a white circular mark.

Handwritten notes in cursive script, partially obscured by a white circular mark.

Handwritten notes in cursive script, partially obscured by a white circular mark.

68
28

身能直而曲也凡所好者皆杖拂

一宗清淨無事人宜在之

在之亦若彼或亦

亦持杖而居之其性也

亦事之亦其性也然其

亦亦亦亦亦亦亦亦亦

亦亦亦亦亦亦亦亦亦

亦亦亦亦亦亦亦亦亦

亦亦亦亦亦亦亦亦亦

亦亦亦亦亦亦亦亦亦

亦亦亦亦亦亦亦亦亦

亦亦亦亦亦亦亦亦亦

亦亦亦亦亦亦亦亦亦

Handwritten text on the right edge of the paper, possibly a date or reference number.

Handwritten text in the upper right section, including the characters "井心" and "去日".

Handwritten text in the middle right section, including the characters "如" and "目".

Handwritten text in the middle section, including the characters "如" and "目".

Handwritten text in the middle left section, including the characters "如" and "目".

Handwritten text in the lower middle section, including the characters "如" and "目".

Handwritten text in the lower left section, including the characters "如" and "目".

Handwritten text in the lower left section, including the characters "如" and "目".

Handwritten text in the bottom left corner, including the characters "如" and "目".

其日丁未舟

在市者由之及

力持強中時也

行力在四一事付是印中片

州通一平也

一之上有其人其方家

一之上有其人其方家

一之上有其人其方家

一之上有其人其方家

一之上有其人其方家

其日丁未舟

在市者由之及

力持強中時也

行力在四一事付是印中片

州通一平也

一之上有其人其方家

一之上有其人其方家

一之上有其人其方家

一之上有其人其方家

一之上有其人其方家

一之上有其人其方家

一之上有其人其方家

一之上有其人其方家

一之上有其人其方家

Handwritten text in a cursive script, likely Latin or a similar European language, on a fragment of aged paper with a large circular hole.

Handwritten text in a cursive script, likely Latin or a similar European language, on a fragment of aged paper with a large circular hole.

Handwritten text in a cursive script, likely Latin or a similar European language, on a fragment of aged paper with a large circular hole.

Handwritten text in a cursive script, likely Latin or a similar European language, on a fragment of aged paper with a large circular hole.

Handwritten text on the right side of the page, including the characters "日" and "月".

Handwritten text in the upper right section, including the characters "日" and "月".

Handwritten text in the middle right section.

Handwritten text in the lower right section.

Handwritten text in the middle section, including the characters "一" and "二".

Handwritten text in the lower middle section.

Handwritten text in the lower left section.

Handwritten text in the middle left section.

Handwritten text in the lower left section.

卅二

下村之... 活... 下... 年...

... 敬... 之...

... 已...

... 社... 友...

... 節... 一...

... 節... 一...

... 節... 一...

... 節... 一...

... 節... 一...

... 節... 一...

... 節... 一...

... 節... 一...

... 節... 一...

... 節... 一...

... 節... 一...

... 節... 一...

... 節... 一...

Handwritten text on the right side of the page, partially obscured by the tear. It appears to be a vertical column of characters.

Handwritten text fragment at the top right, possibly a date or header.

Handwritten text fragment in the middle right section.

Handwritten text fragment in the middle right section.

Handwritten text fragment in the middle right section.

Handwritten text fragment in the middle right section.

Handwritten text fragment in the middle right section.

Handwritten text fragment in the middle right section.

Handwritten text fragment in the middle right section.

Handwritten text fragment in the middle right section.

Handwritten text fragment in the middle right section.

Handwritten text fragment in the middle right section.

Handwritten text fragment in the middle right section.

Handwritten text fragment in the middle right section.

Handwritten text fragment in the middle right section.

Handwritten text fragment in the middle right section.

Handwritten text fragment in the middle right section.

Handwritten text fragment in the middle right section.

Handwritten text fragment in the middle right section.

Handwritten text fragment in the middle right section.

Small red seal or stamp located near the bottom right of the main text area.

多分此也

諸君之...

日...

上刻以...

一戊...

...

...

...

...

68
36

廿五

Handwritten text on a torn strip of paper, likely a fragment of a document. The characters are in cursive (sōsho) style. Some legible characters include "自" (self), "人" (person), and "事" (matter). There are also some faint numbers and a red seal or mark.

Handwritten text on a torn strip of paper. The characters are in cursive style. Some legible characters include "自" (self), "人" (person), and "事" (matter). There are also some faint numbers and a red seal or mark.

Handwritten text on a torn strip of paper. The characters are in cursive style. Some legible characters include "自" (self), "人" (person), and "事" (matter). There are also some faint numbers and a red seal or mark.

Handwritten text on a torn strip of paper. The characters are in cursive style. Some legible characters include "自" (self), "人" (person), and "事" (matter). There are also some faint numbers and a red seal or mark.

Fragmented handwritten text in cursive Japanese calligraphy (sōsho) on aged, stained paper. The text is arranged in vertical columns, reading from right to left. The paper is heavily damaged with significant water damage and tears, particularly in the center and right-hand side. The ink is dark, and the paper has a yellowish-brown hue. The text is mostly illegible due to the damage and the cursive style.

38

いさ月光多
三寺院有

三寺院有

古市市
一及片
心

大因
佛

...

育
...

七
...

馬
...

...

...

...

68
40
乃曰予不...
...
...

辛未年
...
...

...
...
...

十日壬申

...
...
...

...
...
...

...
...
...

...
...
...

...
...
...

...
...
...

...
...
...

...
...
...

Handwritten text on the rightmost fragment, including a red seal at the bottom.

Main body of handwritten text in the center, consisting of several vertical columns.

Handwritten text on the leftmost fragment, including a red seal at the bottom.

Handwritten Japanese text in cursive style, located on the rightmost fragment of the document.

Handwritten Japanese text in cursive style, located in the middle-right fragment of the document.

Handwritten Japanese text in cursive style, located in the middle-left fragment of the document.

Handwritten Japanese text in cursive style, located on the leftmost fragment of the document.

68
44

長中

信實行遠

并竹御子

此の世に千反りて其の世に

昔日辰戌

比ふ世に

一善徳の徳ありて人々を導く事

一善徳の徳ありて人々を導く事

一善徳の徳ありて人々を導く事

一善徳の徳ありて人々を導く事

一善徳の徳ありて人々を導く事

一善徳の徳ありて人々を導く事

一善徳の徳ありて人々を導く事

一善徳の徳ありて人々を導く事

一善徳の徳ありて人々を導く事

一善徳の徳ありて人々を導く事

Handwritten text on the top right fragment, likely a header or title.

Handwritten text on the right fragment, continuing the document's content.

Handwritten text on the right fragment, possibly a date or specific reference.

Handwritten text on the right fragment, continuing the document's content.

Handwritten text on the right fragment, continuing the document's content.

Handwritten text on the right fragment, continuing the document's content.

Handwritten text on the right fragment, continuing the document's content.

Handwritten text on the right fragment, continuing the document's content.

Handwritten text on the right fragment, continuing the document's content.

Handwritten text on the right fragment, continuing the document's content.

Handwritten text on the right fragment, continuing the document's content.

Handwritten text on the right fragment, continuing the document's content.

Handwritten text on the right fragment, continuing the document's content.

Handwritten text on the right fragment, continuing the document's content.

Handwritten text on the right fragment, continuing the document's content.

Handwritten text on the left fragment, continuing the document's content.

45

Handwritten text on a fragment of aged paper, likely a letter or document. The characters are in cursive (sōsho) style. A small number '68' is visible on the right side of the fragment.

Handwritten text on a fragment of aged paper. The characters are in cursive (sōsho) style. The text appears to be a continuation of a letter or document.

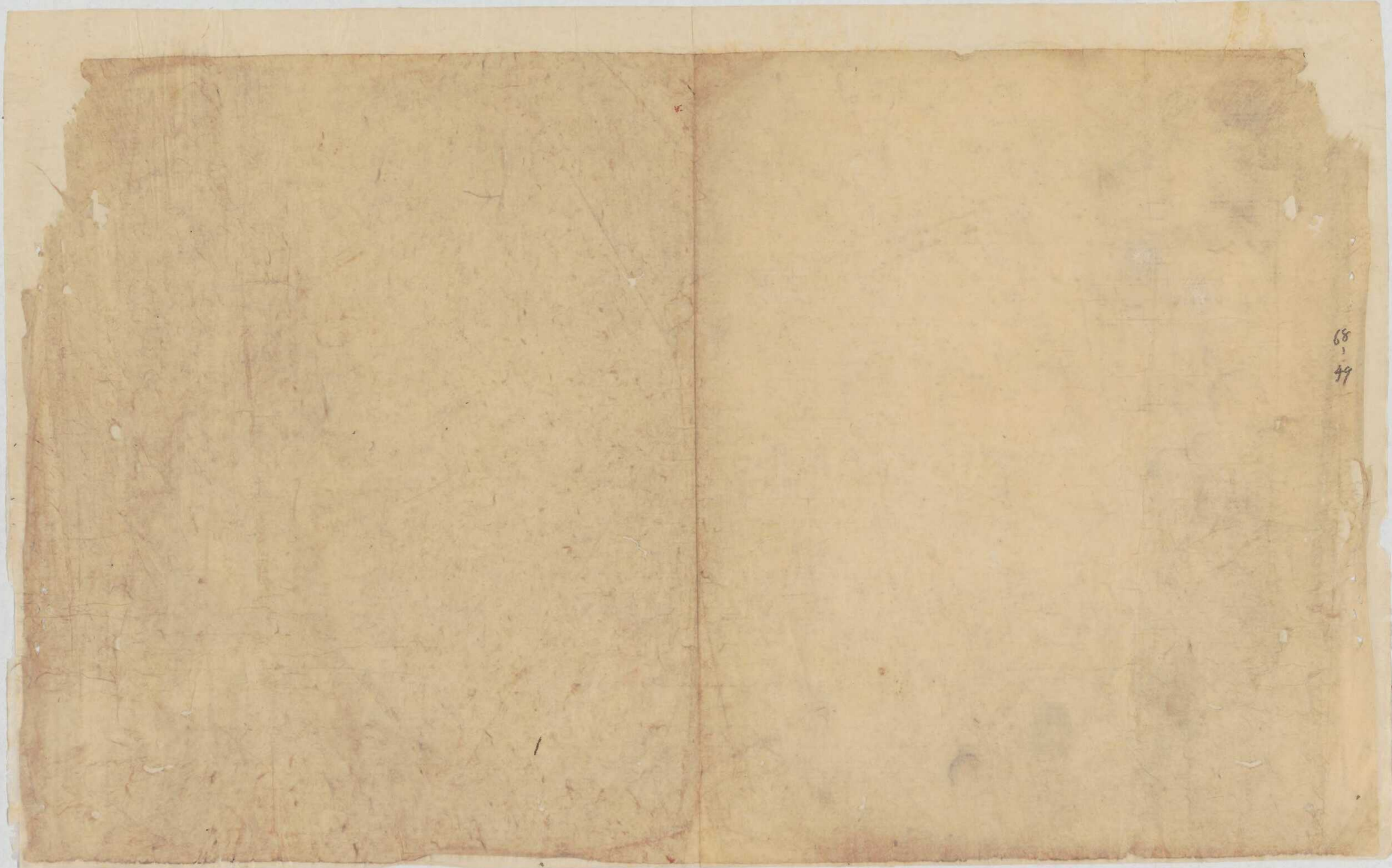
Handwritten text on a fragment of aged paper. The characters are in cursive (sōsho) style. A small red seal or stamp is visible at the bottom right of this fragment.

Handwritten text on a narrow strip of paper, likely a fragment of a larger document. The characters are in a cursive style, possibly representing a signature or a specific name.

Handwritten text on a strip of paper, featuring a prominent vertical column of characters on the left side, possibly a date or a specific reference. The rest of the text is more fragmented and less legible.

Handwritten text on a strip of paper, showing a dense arrangement of characters. The text appears to be a continuous line of writing, possibly a signature or a specific name.

Handwritten text on a narrow strip of paper, likely a fragment of a larger document. The characters are in a cursive style, possibly representing a signature or a specific name.



68
49

Handwritten text on a fragment of aged, stained paper, likely a page from a manuscript. The text is written in a cursive style, possibly a form of Chinese or Japanese calligraphy, and is arranged in several vertical columns. The paper is heavily damaged, with significant water damage and discoloration, particularly in the lower half. The ink is dark, and the characters are somewhat obscured by the staining and the irregular edges of the fragment.

Handwritten text at the top of the page, possibly a name or title.

Handwritten text in the upper middle section, appearing to be a list or series of entries.

Handwritten text in the middle section, continuing the list or entries.

Handwritten text in the lower middle section, showing more entries.

Large handwritten characters at the bottom of the page, possibly a signature or a specific note.

Handwritten text in a cursive script, possibly a signature or a name, located at the top of the page.

Handwritten text in a cursive script, located in the upper middle section of the page.

Handwritten text in a cursive script, located in the middle section of the page.

Handwritten text in a cursive script, located in the lower middle section of the page.

Handwritten text in a cursive script, located in the lower section of the page.

Handwritten text in a cursive script, located at the bottom of the page, including a signature and a date.

Handwritten text in a cursive script, likely a letter or document, written on aged, yellowed paper. The text is written in a dark ink and is highly stylized and difficult to decipher. The paper shows signs of wear, including tears and discoloration. The text is arranged in several lines, with some words appearing to be written in a different script or dialect. The overall appearance is that of an antique manuscript or document.

Handwritten mark or symbol at the top left of the page.

Main body of handwritten text in a cursive script, written on aged, yellowed paper with significant damage and tears.

Handwritten text at the bottom of the page, including a signature and possibly a date.

Handwritten text in a cursive script, possibly a signature or a name, located at the top of the document.

Handwritten text in a cursive script, located below the first line of text.

Handwritten text in a cursive script, located below the second line of text.

Handwritten text in a cursive script, located below the third line of text.

Handwritten text in a cursive script, located below the fourth line of text.

Handwritten text in a cursive script, located below the fifth line of text.

Handwritten text in a cursive script, located below the sixth line of text.

Handwritten text in a cursive script, located below the seventh line of text.

Handwritten text in a cursive script, located below the eighth line of text.

Handwritten text in a cursive script, located below the ninth line of text.

Handwritten text in a cursive script, located below the tenth line of text.

Handwritten text in a cursive script, located at the bottom of the document.

Handwritten text in a cursive script, likely a list or account, starting with a vertical line on the left. The text is written on aged, yellowed paper.

Handwritten text in a cursive script, continuing the list or account.

Handwritten text in a cursive script, continuing the list or account.

Handwritten text in a cursive script, continuing the list or account.

Handwritten text in a cursive script, continuing the list or account.

Handwritten text in a cursive script, continuing the list or account.

Handwritten text in a cursive script, continuing the list or account.

Handwritten text in a cursive script, continuing the list or account.

Handwritten text in a cursive script, continuing the list or account.

Handwritten text in a cursive script, continuing the list or account.

Handwritten text in a cursive script, continuing the list or account.

Handwritten text in a cursive script, continuing the list or account.

18-2

Handwritten text, likely a name or title, written in cursive.

Handwritten text, possibly a date or location.

Handwritten text, possibly a name or title, written in cursive.

Handwritten text, likely a name or title, written in cursive.

Handwritten text, possibly a date or location.

Handwritten text, likely a name or title, written in cursive.

Handwritten text, likely a name or title, written in cursive.

Handwritten text, likely a name or title, written in cursive.

Handwritten text, likely a name or title, written in cursive.

Handwritten text, likely a name or title, written in cursive.

Handwritten text, likely a name or title, written in cursive.

Handwritten text, likely a name or title, written in cursive.

Handwritten text, likely a name or title, written in cursive.

Handwritten text, likely a name or title, written in cursive.

Handwritten text, likely a name or title, written in cursive.

Handwritten text, likely a name or title, written in cursive.

Handwritten text, likely a name or title, written in cursive.

Handwritten text, likely a name or title, written in cursive.

Handwritten text, likely a name or title, written in cursive.

Handwritten text, likely a name or title, written in cursive.

Handwritten text, likely a name or title, written in cursive.

Handwritten text, likely a name or title, written in cursive.

Handwritten text, likely a name or title, written in cursive.

Handwritten text, likely a name or title, written in cursive.

Handwritten text, likely a name or title, written in cursive.

Handwritten Japanese text in cursive (sōsho) style, written on aged, yellowed paper. The text is arranged in vertical columns, reading from right to left. The paper shows signs of wear, including tears and discoloration. The characters are fluid and connected, typical of the cursive style. The text appears to be a personal letter or a record of events, with some characters being more prominent than others. The overall appearance is that of an antique manuscript.

Handwritten text in a cursive script, likely a historical document or letter. The text is written on aged, yellowed paper and is mostly illegible due to fading and damage. The script appears to be a form of shorthand or a highly stylized cursive. There are several lines of text, some starting with a vertical line, possibly indicating a list or a specific section. The text is written from right to left across the page.

Handwritten text on the left side of the page, possibly a signature or a date. It consists of a few lines of cursive script.

Small handwritten text at the bottom left corner, possibly a date or a reference number.

100

1 11 22 33 44 55 66 77 88 99 100
1 2 3 4 5 6 7 8 9 10 11 12 13 14 15 16 17 18 19 20

21 22 23 24 25 26 27 28 29 30 31 32 33 34 35 36 37 38 39 40
41 42 43 44 45 46 47 48 49 50 51 52 53 54 55 56 57 58 59 60
61 62 63 64 65 66 67 68 69 70 71 72 73 74 75 76 77 78 79 80
81 82 83 84 85 86 87 88 89 90 91 92 93 94 95 96 97 98 99 100

101 102 103 104 105 106 107 108 109 110 111 112 113 114 115 116 117 118 119 120
121 122 123 124 125 126 127 128 129 130 131 132 133 134 135 136 137 138 139 140
141 142 143 144 145 146 147 148 149 150 151 152 153 154 155 156 157 158 159 160
161 162 163 164 165 166 167 168 169 170 171 172 173 174 175 176 177 178 179 180

181 182 183 184 185 186 187 188 189 190 191 192 193 194 195 196 197 198 199 200
201 202 203 204 205 206 207 208 209 210 211 212 213 214 215 216 217 218 219 220
221 222 223 224 225 226 227 228 229 230 231 232 233 234 235 236 237 238 239 240
241 242 243 244 245 246 247 248 249 250 251 252 253 254 255 256 257 258 259 260

261 262 263 264 265 266 267 268 269 270 271 272 273 274 275 276 277 278 279 280
281 282 283 284 285 286 287 288 289 290 291 292 293 294 295 296 297 298 299 300
301 302 303 304 305 306 307 308 309 310 311 312 313 314 315 316 317 318 319 320
321 322 323 324 325 326 327 328 329 330 331 332 333 334 335 336 337 338 339 340
341 342 343 344 345 346 347 348 349 350 351 352 353 354 355 356 357 358 359 360
361 362 363 364 365 366 367 368 369 370 371 372 373 374 375 376 377 378 379 380
381 382 383 384 385 386 387 388 389 390 391 392 393 394 395 396 397 398 399 400
401 402 403 404 405 406 407 408 409 410 411 412 413 414 415 416 417 418 419 420
421 422 423 424 425 426 427 428 429 430 431 432 433 434 435 436 437 438 439 440
441 442 443 444 445 446 447 448 449 450 451 452 453 454 455 456 457 458 459 460
461 462 463 464 465 466 467 468 469 470 471 472 473 474 475 476 477 478 479 480
481 482 483 484 485 486 487 488 489 490 491 492 493 494 495 496 497 498 499 500

501 502 503 504 505 506 507 508 509 510 511 512 513 514 515 516 517 518 519 520
521 522 523 524 525 526 527 528 529 530 531 532 533 534 535 536 537 538 539 540
541 542 543 544 545 546 547 548 549 550 551 552 553 554 555 556 557 558 559 560
561 562 563 564 565 566 567 568 569 570 571 572 573 574 575 576 577 578 579 580
581 582 583 584 585 586 587 588 589 590 591 592 593 594 595 596 597 598 599 600
601 602 603 604 605 606 607 608 609 610 611 612 613 614 615 616 617 618 619 620
621 622 623 624 625 626 627 628 629 630 631 632 633 634 635 636 637 638 639 640
641 642 643 644 645 646 647 648 649 650 651 652 653 654 655 656 657 658 659 660
661 662 663 664 665 666 667 668 669 670 671 672 673 674 675 676 677 678 679 680
681 682 683 684 685 686 687 688 689 690 691 692 693 694 695 696 697 698 699 700
701 702 703 704 705 706 707 708 709 710 711 712 713 714 715 716 717 718 719 720
721 722 723 724 725 726 727 728 729 730 731 732 733 734 735 736 737 738 739 740
741 742 743 744 745 746 747 748 749 750 751 752 753 754 755 756 757 758 759 760
761 762 763 764 765 766 767 768 769 770 771 772 773 774 775 776 777 778 779 780
781 782 783 784 785 786 787 788 789 790 791 792 793 794 795 796 797 798 799 800
801 802 803 804 805 806 807 808 809 810 811 812 813 814 815 816 817 818 819 820
821 822 823 824 825 826 827 828 829 830 831 832 833 834 835 836 837 838 839 840
841 842 843 844 845 846 847 848 849 850 851 852 853 854 855 856 857 858 859 860
861 862 863 864 865 866 867 868 869 870 871 872 873 874 875 876 877 878 879 880
881 882 883 884 885 886 887 888 889 890 891 892 893 894 895 896 897 898 899 900
901 902 903 904 905 906 907 908 909 910 911 912 913 914 915 916 917 918 919 920
921 922 923 924 925 926 927 928 929 930 931 932 933 934 935 936 937 938 939 940
941 942 943 944 945 946 947 948 949 950 951 952 953 954 955 956 957 958 959 960
961 962 963 964 965 966 967 968 969 970 971 972 973 974 975 976 977 978 979 980
981 982 983 984 985 986 987 988 989 990 991 992 993 994 995 996 997 998 999 1000

寶徳三年

春日社兼興福寺願持付圖書庫

開封府人右方源陳運

一 茲修左右上皇御衣衾

一 白檀板云云行

一 云云

一 云云

寶徳三年

河原

長福寺

奉書

長福寺南信

河原

長福寺南信

1050

1050

1050

Handwritten cursive script, likely a list or account.

Handwritten cursive script, likely a list or account.

Handwritten cursive script, likely a list or account.

Handwritten cursive script, likely a list or account.

Handwritten cursive script, likely a list or account.

Handwritten cursive script, likely a list or account.

Handwritten cursive script, likely a list or account.

Handwritten cursive script, likely a list or account.

Handwritten cursive script, likely a list or account.

Handwritten cursive script, likely a list or account.

Handwritten cursive script, likely a list or account.

Handwritten cursive script, likely a list or account.

Handwritten cursive script, likely a list or account.

Handwritten cursive script, likely a list or account.

Handwritten cursive script, likely a list or account.

先例也。往古例并他國不可勝計似此

興福寺雜律中村山國山道

加納本内中嶋入道跡事及

春日社山邊官遠都都

上矣了沙汰付籍事也成律

委四年上貞高日在判

長四百

攝津國西小原庄事 喧嘩

於皇出日姓本名了返渡社家至

下地夫及宗礼老親也了名了安付

難事也成事也

交安之身也上印世言在判

也

長極備入為成

右且程准心聚

Handwritten text in a cursive script, likely a historical document or letter, written on aged, yellowed paper with significant damage and tear. The text is arranged in approximately 12 vertical columns, reading from right to left. The script is highly stylized and difficult to decipher. The paper shows signs of water damage and foxing, particularly in the lower half of the document.

Handwritten text in a cursive script, likely a historical document or letter. The text is written on aged, yellowed paper with several large holes and significant water damage, particularly along the right edge. The script is dense and difficult to decipher, but appears to be a form of historical Chinese or Japanese calligraphy. The text is organized into several vertical columns, with some lines starting with a vertical stroke that may indicate a new section or a specific address. The overall appearance is that of an antique manuscript or a fragment of a larger document.

Handwritten text in a cursive script, likely a historical document or letter, written on aged, yellowed paper with significant damage and tears. The text is arranged in several lines across two pages, with some characters appearing to be in a different script or dialect. The paper is heavily stained and has irregular edges, suggesting it is an antique manuscript.

春日社領橫濱國六車

御入米井吉於田新村大

和宗志志多罪科上云云

月水志江流人の寺社不

領知首可江何何何

寛正三年八月廿日 御封

典國寺別當馬田

Handwritten text in a cursive script, likely a continuation of the document's content, including names and dates.

Handwritten notes in the right margin, including the name 'Yoshida' (吉田) and other illegible characters.

曾祖河内川通其 七頭領

藏主 康平 味方南都領官餘

藏部 近年 悔又剛身

地乃職事 以一方 領家之其

揮領 結句石混取之 及柳每 一社 日

也 是 領家之 地乃職

一區為社 地 堅松院

古 子 領家之 地乃職

子 領家之 地乃職

領家之 地乃職

領家之 地乃職

領家之 地乃職

領家之 地乃職

Handwritten text at the top of the page, possibly a title or header, written in a cursive style.

春日社兼興福寺 権津園

吾庫開不 一 停心新色書

國料 也 守之 人 國幣

Handwritten text in the middle section, appearing to be a list or a series of entries.

永祿三年十二月

大長兼右近衛大將源朝臣 柳判

Handwritten text below the signature, possibly a date or a reference.

Handwritten text at the bottom of the page, including a red seal or stamp.

Handwritten text in a cursive style, likely a signature or a short message, located at the top of the rightmost fragment.

Handwritten text in a cursive style, located in the middle of the rightmost fragment.

Handwritten text in a cursive style, located in the middle of the second fragment from the right.

Handwritten text in a cursive style, located in the middle of the third fragment from the right.

Handwritten text in a cursive style, located in the middle of the leftmost fragment.

Handwritten text in a cursive script, possibly a signature or a name, written on aged, yellowed paper.

Handwritten characters, possibly a date or a specific reference, written in a cursive script.

Handwritten text in a cursive script, appearing to be a signature or a name.

Handwritten text in a cursive script, possibly a signature or a name, written on aged, yellowed paper.

Handwritten text in a cursive script, possibly a signature or a name, written on aged, yellowed paper.

Handwritten text in a cursive script, possibly a signature or a name, written on aged, yellowed paper.

Handwritten text in a cursive script, likely a letter or document fragment. The text is written on aged, yellowed paper with significant damage and a large circular hole. The characters are dense and difficult to decipher due to the style and wear.

Handwritten text in a cursive script, continuing the fragment. The paper is heavily stained and has a large circular hole. The characters are dense and difficult to decipher.

Handwritten characters, possibly a signature or a specific name, written in a bold, cursive style. The characters appear to be '德' and '成'.

Handwritten text in a cursive script, the bottom portion of the fragment. The paper is heavily stained and has a large circular hole. The characters are dense and difficult to decipher.

Handwritten text on the right side of the top fragment, including the number '2176' and a signature.

Handwritten text on the left side of the top fragment, including a signature and a date.

Handwritten text on the right side of the middle fragment, including a signature and a date.

Handwritten text on the left side of the middle fragment, including a signature and a date.

Handwritten text on the right side of the bottom fragment, including a signature and a date.

Handwritten text on the left side of the bottom fragment, including a signature and a date.

Handwritten text on the right side of the bottom fragment, including a signature and a date.

Handwritten text on the left side of the bottom fragment, including a signature and a date.

Handwritten text on the right side of the bottom fragment, including a signature and a date.

Handwritten Japanese text in cursive style (sōsho) on aged, torn paper. The text is arranged in vertical columns, reading from right to left. The paper shows significant wear, including large white holes and irregular edges. The ink is dark and the characters are fluid and interconnected. The text appears to be a formal document or a letter, possibly related to a historical record or a personal correspondence. The overall appearance is that of an antique manuscript.

Handwritten text on a heavily damaged, yellowed paper fragment. The script is cursive and appears to be in a historical form of Japanese or Chinese characters. The text is mostly illegible due to the damage and fading, but some characters are visible, including what looks like 'B' and 'D' at the top left.

Handwritten text on a heavily damaged, yellowed paper fragment. The script is cursive and appears to be in a historical form of Japanese or Chinese characters. The text is mostly illegible due to the damage and fading, but some characters are visible, including what looks like 'B' and 'D' at the top left.

Handwritten text in Japanese cursive (sōsho) on aged, torn paper. The text is arranged in vertical columns, reading from right to left. The paper shows significant signs of wear, including large circular holes and irregular tears. The ink is dark brown, and the paper has a yellowish-brown patina. The writing is dense and fluid, characteristic of the cursive style. The text appears to be a personal letter or a document of some importance, given the formal yet intimate nature of the script.

Handwritten text in a cursive script, likely a form of shorthand or a specific dialect. The text is written on aged, yellowed paper with two large circular holes. The script is dense and difficult to decipher without a key.

Handwritten text at the top right of the page, partially obscured by a tear.

Handwritten text in the middle right section, including a large circular hole.

Handwritten text in the middle left section, including a large circular hole.

Handwritten text in the bottom right section, including a large circular hole.

Handwritten text in the bottom left section, including a large circular hole.

Handwritten text in a cursive script, likely a signature or name, located at the top of the document.

Handwritten text in a cursive script, located below the top signature.

Handwritten text in a cursive script, located in the middle section of the document.

Handwritten text in a cursive script, located in the middle section of the document.

Handwritten text in a cursive script, located in the middle section of the document.

Handwritten text in a cursive script, located in the middle section of the document.

Handwritten text in a cursive script, located in the middle section of the document.

Handwritten text in a cursive script, located in the middle section of the document.

Handwritten text in a cursive script, located in the middle section of the document.

Handwritten text in a cursive script, located in the middle section of the document.

Handwritten text in a cursive script, located in the middle section of the document.

Handwritten text in a cursive script, located at the bottom of the document.

Handwritten text in a cursive script, possibly a signature or a name, located at the top of the page.

Handwritten text in a cursive script, possibly a signature or a name, located in the upper middle section of the page.

Handwritten text in a cursive script, possibly a signature or a name, located in the middle section of the page.

Handwritten text in a cursive script, possibly a signature or a name, located in the lower middle section of the page.

Handwritten text in a cursive script, possibly a signature or a name, located in the bottom middle section of the page.

Handwritten text in a cursive script, possibly a signature or a name, located in the bottom left section of the page.

Handwritten text in a cursive script, possibly a signature or a name, located in the bottom right section of the page.

Handwritten text in a cursive script, possibly a signature or a name, located at the bottom of the page.

Fragmented handwritten text in cursive Japanese calligraphy (sōsho) on aged, yellowed paper. The text is arranged in vertical columns and is highly illegible due to the paper's damage and the style of the script. Some faint characters are visible, such as '何既' (nani jitsu) and '何既' (nani jitsu) in the middle section.

Fragment of a handwritten document in cursive Japanese calligraphy (sōsho) on aged, yellowed paper. The text is arranged in vertical columns, reading from right to left. The paper is heavily damaged with significant tearing and missing sections. The visible characters include:

Rightmost column: 成
Second column: 成
Third column: 集
Fourth column: 集
Fifth column: 集
Sixth column: 集
Seventh column: 集
Eighth column: 集
Ninth column: 集
Tenth column: 集
Eleventh column: 集
Twelfth column: 集
Thirteenth column: 集
Fourteenth column: 集
Fifteenth column: 集
Sixteenth column: 集
Seventeenth column: 集
Eighteenth column: 集
Nineteenth column: 集
Twentieth column: 集
Twenty-first column: 集
Twenty-second column: 集
Twenty-third column: 集
Twenty-fourth column: 集
Twenty-fifth column: 集
Twenty-sixth column: 集
Twenty-seventh column: 集
Twenty-eighth column: 集
Twenty-ninth column: 集
Thirtieth column: 集
Thirty-first column: 集
Thirty-second column: 集
Thirty-third column: 集
Thirty-fourth column: 集
Thirty-fifth column: 集
Thirty-sixth column: 集
Thirty-seventh column: 集
Thirty-eighth column: 集
Thirty-ninth column: 集
Fortieth column: 集
Forty-first column: 集
Forty-second column: 集
Forty-third column: 集
Forty-fourth column: 集
Forty-fifth column: 集
Forty-sixth column: 集
Forty-seventh column: 集
Forty-eighth column: 集
Forty-ninth column: 集
Fiftieth column: 集

Fragment of an ancient manuscript with handwritten text in a cursive script, likely a form of Chinese or Japanese calligraphy. The text is written on aged, yellowed paper that is heavily damaged, torn, and stained. The characters are dark and dense, following a vertical layout. The paper is irregularly shaped with jagged edges and significant water damage, particularly in the lower and right portions. The ink is dark, and the overall appearance is that of an antique document fragment.

Fragment of a handwritten document in a cursive script, possibly Japanese or Chinese. The text is written on aged, yellowed paper with significant damage and tear. The characters are highly stylized and difficult to decipher. The text is arranged in several vertical columns, with some characters appearing to be in a different script or dialect. The overall appearance is that of an ancient or historical manuscript fragment.

Handwritten text on a torn strip of paper, likely a fragment of a document. The text is written in a cursive script and includes the number '25'.

Handwritten text on a torn strip of paper, likely a fragment of a document. The text is written in a cursive script and includes the number '25'.

Handwritten text on a torn strip of paper, likely a fragment of a document. The text is written in a cursive script and includes the number '25'.

Handwritten text on a torn strip of paper, likely a fragment of a document. The text is written in a cursive script and includes the number '25'.

素履之志
其心之
其心之
其心之

人之造
紀之
其心之
其心之

其心之
其心之
其心之
其心之

其心之
其心之
其心之
其心之

其心之
其心之
其心之
其心之

Handwritten text on a torn strip of paper, likely a fragment of a letter or document. The script is cursive and appears to be in a historical or non-Latin script.

Handwritten text on a torn strip of paper, continuing the script from the previous fragment. The text is dense and difficult to decipher due to the cursive style and damage.

Handwritten text on a torn strip of paper, showing a continuation of the script. A small red mark is visible near the bottom right of this fragment.

Handwritten text on a large, heavily torn piece of paper. The script is consistent with the other fragments. The paper is significantly damaged, with large areas missing.

Fragment 1: Handwritten text on a torn strip of paper, likely the beginning of a letter or document.

Fragment 2: A larger piece of torn paper containing several lines of handwritten text.

Fragment 3: A narrow strip of paper with a few lines of handwritten text.

Fragment 4: A strip of paper with handwritten text, possibly a continuation of the previous fragment.

Fragment 5: A larger piece of torn paper with multiple lines of handwritten text.

Fragment 6: A long, narrow strip of paper with handwritten text, possibly a signature or a closing.

別後書

...

我修三月夜枯

...

...

...

...

...

...

...

...

Fragment of a document with vertical handwritten text in cursive script.

Fragment of a document with vertical handwritten text in cursive script, including a red seal.

Fragment of a document with vertical handwritten text in cursive script.

Fragment of a document with vertical handwritten text in cursive script.

68
50
止

