

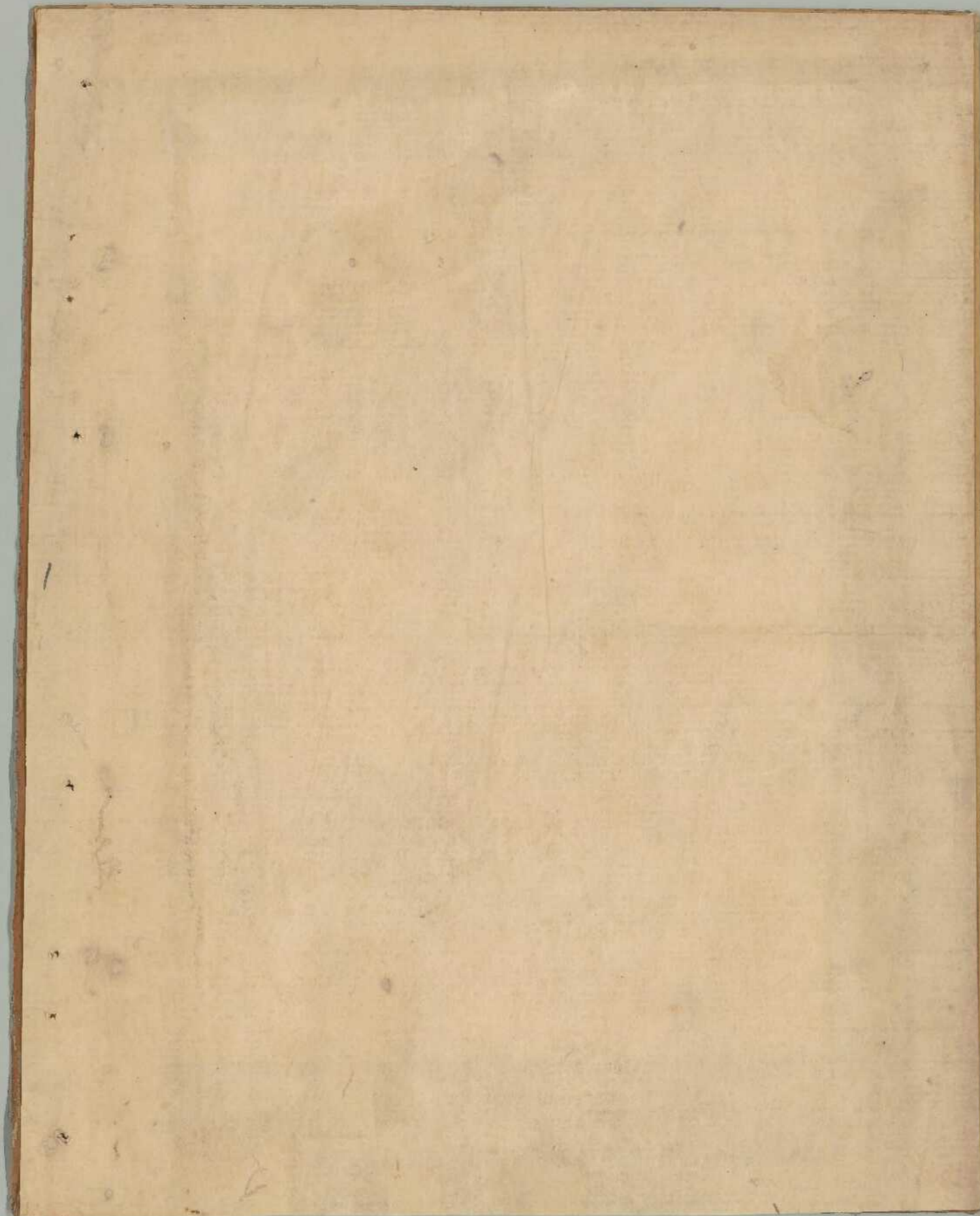
安位寺殿御自記 七十一卷

古文書

一九函共三
三五九號

内閣文庫	
番號	和 20909
冊數	82 (73)
函號	古 19 359





三九三

文明二年庚寅正月

要領

御列

2

Handwritten text in the top right corner, possibly a date or reference number.

文明の源流
文明の源流
文明の源流

Handwritten text in the middle right section.

Handwritten text in the middle section.

Handwritten text in the middle left section.

Handwritten text in the bottom middle section.

Handwritten text in the bottom left section.

Handwritten text in the bottom left section.

Handwritten text in the bottom left section.

Handwritten text in the bottom left section.

Handwritten text in the bottom left section.



主君の由りて

幸か或る 祐成或る

七月廿五日

大代の儀

主君一之由りて 祐成一之由りて

地下三言 祐成一之由りて

一平田名ノコトシ 地下ヨリ 次シテ

臣道に付

文明二年 京

正月

朔日

壬午

千徳方福を其の

一 四方神つらり例 先程生る現方

一 高田の底に此の神を祀りて

一 王配と下りて入る神

一 小田町にて海を立寄る

一 油問屋とて向白を

一 遠田社に白敷寺殿角 子竹を祀る

一 川口にて寺殿角を祀る 千代を祀る

一 福島の寺殿角を祀る

一 西條の寺殿角を祀る

一 五反の寺殿角を祀る

一 道法元重を祀る

一 千代を祀る

一 白信種を祀る

一 席松を祀る

一 川口を祀る

一 付の寺殿角を祀る

古書抄

清原公房抄

高麗抄

法華抄

孝廉抄

方河抄

中四抄

明惠抄

...

百目し商

...

...

...

...

...

...

...

...

...

Handwritten text in cursive style, likely a signature or name, possibly reading "Yoshida" or similar.

Handwritten text in cursive style, possibly a date or a specific reference.

Handwritten text in cursive style, possibly a name or title.

Handwritten text in cursive style, possibly a name or title.

Handwritten text in cursive style, possibly a name or title.

Handwritten text in cursive style, possibly a name or title.

Handwritten text in cursive style, possibly a name or title.

Handwritten text in cursive style, possibly a name or title.

Handwritten text in cursive style, possibly a name or title.

Handwritten text in cursive style, possibly a name or title.

Handwritten text in cursive style, possibly a name or title.

Handwritten text in cursive style, possibly a name or title.

Handwritten text in cursive style, possibly a name or title.

Handwritten text in cursive style, possibly a name or title.

之目録

一、
二、
三、
四、
五、
六、
七、
八、
九、
十、

一、
二、
三、
四、
五、
六、
七、
八、
九、
十、

一、
二、
三、
四、
五、
六、
七、
八、
九、
十、

一、
二、
三、
四、
五、
六、
七、
八、
九、
十、

一、
二、
三、
四、
五、
六、
七、
八、
九、
十、

一、
二、
三、
四、
五、
六、
七、
八、
九、
十、

一、
二、
三、
四、
五、
六、
七、
八、
九、
十、

一、
二、
三、
四、
五、
六、
七、
八、
九、
十、

一、
二、
三、
四、
五、
六、
七、
八、
九、
十、

一、
二、
三、
四、
五、
六、
七、
八、
九、
十、

一、
二、
三、
四、
五、
六、
七、
八、
九、
十、

一、
二、
三、
四、
五、
六、
七、
八、
九、
十、

一、
二、
三、
四、
五、
六、
七、
八、
九、
十、

諸方より物... 運道... 今和布

上小四方市... 上小四方市

常長之... 常長之

信は又... 信は又

中... 中

本... 本

二... 二

又... 又

人... 人

此... 此

念... 念

本... 本

一... 一

乃... 乃

至... 至

由... 由

一... 一

本... 本

一 池新子まで中割法師より一山形法師
しんもし

一 松多来新子より信成と佳成のこ

十日 甲子 十一 丙

皇国赤松入るる乃及臨水等地

深古道板も亦ふるゆへ上人

多し病死ゆへも古法 王系有

三毛也 乃如ともかゆあめしとあ祀

比るなりとてゆへもとと云連と

戸に 長心 誠知の江原 乃如ともか

月付目代律師の申す法行法舞江結

今下より新子ゆへも初りか人

吾法王系馬り

一 業清 乃如ともかゆあめしとあ祀

初ゆへも有るゆへも

一 物笑ゆへも元功乃如ともかゆあめしとあ祀

ゆへも下より 業次乃如ともかゆあめしとあ祀

一 依久無夢乃如ともかゆあめしとあ祀

此書乃如ともかゆあめしとあ祀

権三と書と初請ゆへも小徳乃如ともかゆあめしとあ祀

御書

文目し東府

一 地味物... 書地味物を... 事... 事...

一 見... 典... 神... 三... 命... 市... 生... 成...

一 相... 御... 御... 御... 御... 御... 御... 御...

一 海... 御... 御... 御... 御... 御... 御... 御...

一 王... 御... 御... 御... 御... 御... 御... 御...

一 書... 御... 御... 御... 御... 御... 御... 御...

一 一... 御... 御... 御... 御... 御... 御... 御...

一 志... 御... 御... 御... 御... 御... 御... 御...

一 指... 御... 御... 御... 御... 御... 御... 御...

一 普... 御... 御... 御... 御... 御... 御... 御...

一 王... 御... 御... 御... 御... 御... 御... 御...

一 指... 御... 御... 御... 御... 御... 御... 御...

Handwritten text on the right edge of the right page, partially obscured.

七日丁酉 舟に候 市中下る 後...

一 物名 倫也 多の 向の 今五師 一 舟中
物名 倫也 多の 向の 今五師 一 舟中
物名 倫也 多の 向の 今五師 一 舟中
物名 倫也 多の 向の 今五師 一 舟中
物名 倫也 多の 向の 今五師 一 舟中

一 物名 倫也 多の 向の 今五師 一 舟中
物名 倫也 多の 向の 今五師 一 舟中
物名 倫也 多の 向の 今五師 一 舟中
物名 倫也 多の 向の 今五師 一 舟中
物名 倫也 多の 向の 今五師 一 舟中

一、*Handwritten text*

一、*Handwritten text*

一、*Handwritten text*

一、*Handwritten text*

Handwritten text on the right edge of the page, possibly a date or reference number.

Handwritten text in the right column, starting with a circled character.

Handwritten text in the right column, continuing the vertical script.

Handwritten text in the right column, continuing the vertical script.

Handwritten text in the right column, continuing the vertical script.

Handwritten text in the right column, continuing the vertical script.

Handwritten text in the right column, continuing the vertical script.

Handwritten text in the right column, continuing the vertical script.

Handwritten text in the right column, continuing the vertical script.

Handwritten text in the right column, continuing the vertical script.

Handwritten text in the right column, continuing the vertical script.

Handwritten text in the right column, continuing the vertical script.

Handwritten text in the right column, continuing the vertical script.

Handwritten text in the right column, continuing the vertical script.

Handwritten text in the right column, continuing the vertical script.

Handwritten text in the right column, continuing the vertical script.

Handwritten text in the right column, continuing the vertical script.

Handwritten text in the right column, continuing the vertical script.

Handwritten text at the top edge of the page, partially cut off.

Handwritten text in the upper right section of the page.

Handwritten text in the middle right section of the page.

Handwritten text in the lower right section of the page.

Handwritten text in the lower middle section of the page.

Handwritten text in the lower left section of the page.

Handwritten text in the lower left section of the page.

Handwritten text in the lower left section of the page.

Handwritten text in the lower left section of the page.

Handwritten text in the lower left section of the page.

Handwritten text in the lower left section of the page.

Handwritten text in the lower left section of the page.

Handwritten text in the lower left section of the page.

Handwritten text in the lower left section of the page.

Handwritten text in the lower left section of the page.

Handwritten text in the lower left section of the page.

Samuel Johnson

報日成...

...

...

...

...

...

...

...

...

...

...

...

...

...

一 乃有... 乃有... 乃有...

七日... 乃有... 乃有...

八日... 乃有... 乃有...

一 乃有... 乃有... 乃有... 乃有...

一 乃有... 乃有... 乃有... 乃有...

九日... 乃有... 乃有... 乃有...

一 乃有... 乃有... 乃有... 乃有... 乃有...

乃有... 乃有... 乃有...

此の如き所は多し一は如き如き

一 田舎の道は多し一は如き如き

一 田舎の道は多し一は如き如き

一 田舎の道は多し一は如き如き

一 田舎の道は多し一は如き如き

一 田舎の道は多し一は如き如き

一 田舎の道は多し一は如き如き

一 田舎の道は多し一は如き如き

十日未至也

予利以水西裏矣及少福亭後入山

即... 次... 祈...

今... 國...

予... 國...

一... 三...

之... 也...

中... 也...

一... 也...

一... 也...

美月代

一... 也...

一... 也...

一... 也...

音日席... 也...

也... 也...

也... 也...

也... 也...

也... 也...

上りては... 直に...
 此の... 事...
 此の... 事...
 此の... 事...

此日... 成...
 此日... 成...
 此日... 成...

此日... 成...
 此日... 成...
 此日... 成...

此日... 成...
 此日... 成...
 此日... 成...

此日... 成...
 此日... 成...
 此日... 成...

律に是は師...
 主として...
 親...
 守...
 金...
 金...
 頂...

十日...
 ...

...
 ...
 ...
 ...
 ...

...
 ...
 ...
 ...

夫曰中耕
防者中可及金以沙形
也其
也其
也其

松系三節
夕能所凡中福
植也備也
古市川
三系作
四



其曰
心作
心作
心作

初備
平
平

平
平
平

初之辰初... 在國... 第... 中... 油...

廿日... 物... 運...

廿日... 分... 運...

一... 運...

向... 運...

一... 運...

大正十二年三月

一 帝制に於ては

一 帝制に於ては

一 帝制に於ては

一 帝制に於ては

一 帝制に於ては

一 帝制に於ては

一 帝制に於ては

一 帝制に於ては

一 帝制に於ては

一 帝制に於ては

一 帝制に於ては

一 帝制に於ては

一 帝制に於ては

一 帝制に於ては

一 帝制に於ては

一 帝制に於ては

一 帝制に於ては

一 帝制に於ては

一 帝制に於ては

一 帝制に於ては

一 帝制に於ては

一 帝制に於ては

一 帝制に於ては

一 帝制に於ては

其目

一 由深りし山向の有力者あり
 二 山向の有力者あり
 三 山向の有力者あり
 四 山向の有力者あり
 五 山向の有力者あり
 六 山向の有力者あり
 七 山向の有力者あり
 八 山向の有力者あり
 九 山向の有力者あり
 十 山向の有力者あり

其目

一 山向の有力者あり
 二 山向の有力者あり
 三 山向の有力者あり
 四 山向の有力者あり
 五 山向の有力者あり
 六 山向の有力者あり
 七 山向の有力者あり
 八 山向の有力者あり
 九 山向の有力者あり
 十 山向の有力者あり

山向の有力者あり

其目

一 山向の有力者あり
 二 山向の有力者あり
 三 山向の有力者あり
 四 山向の有力者あり
 五 山向の有力者あり
 六 山向の有力者あり
 七 山向の有力者あり
 八 山向の有力者あり
 九 山向の有力者あり
 十 山向の有力者あり

山向の有力者あり

山向の有力者あり

江州府志

卷之六

文三十一百

長安...

天

五日...

Handwritten text in cursive script, likely a historical record or official document.

天

Main body of handwritten text in cursive script, continuing the record or document.

Handwritten text in cursive style, likely a letter or official document, starting with characters like '之' and '以'.

Handwritten text in cursive style, starting with characters like '一' and '之', continuing the document's content.

Handwritten text in cursive style, starting with characters like '一' and '之', forming the main body of the document.

三月水

初日度取由下

于他方偏を専ら

一 勿海因之及前 止玉後

一 昔管之迄今之 三多命の久

一 而之入自後之 其之御

一 惟秋

一 古之玉上之 御之御

一 中 御之御

一 注 御之御

一 更之御之 御之御

一 御之御

一 御之御

二日

三日

一 古之御之御

一 御之御

一 御之御

一 御之御

一 御之御

一 湯力品 光緒

四日 未 舟

小 舟 行 程 甚 速 且 有 舟 楫 之 功 而 無 舟 楫 之 勞 且 舟 楫 之 功 而 無 舟 楫 之 勞 且 舟 楫 之 功 而 無 舟 楫 之 勞

五日 午 舟

舟 行 甚 速 且 有 舟 楫 之 功 而 無 舟 楫 之 勞 且 舟 楫 之 功 而 無 舟 楫 之 勞

舟 行 甚 速 且 有 舟 楫 之 功 而 無 舟 楫 之 勞 且 舟 楫 之 功 而 無 舟 楫 之 勞 且 舟 楫 之 功 而 無 舟 楫 之 勞 且 舟 楫 之 功 而 無 舟 楫 之 勞

Handwritten text in the right margin, possibly a date or reference number.

Main body of handwritten text in the right column, written in a dense, cursive style.

Handwritten text in the left margin, possibly a date or reference number.

Main body of handwritten text in the left column, written in a dense, cursive style.

Large handwritten text at the bottom of the page, possibly a signature or a concluding statement.

初日
一、
二、
三、
四、
五、
六、
七、
八、
九、
十、

一、
二、
三、
四、
五、
六、
七、
八、
九、
十、

一、
二、
三、
四、
五、
六、
七、
八、
九、
十、

一、
二、
三、
四、
五、
六、
七、
八、
九、
十、

一 月... 物... 之... 新... 一... 年... 方... 事... 事...

事...

六日... 油... 然... 之... 中... 新... 以... 事... 事...

Vertical marginal text on the right edge of the right page.

Main body of handwritten text on the right page, written in cursive style.

Main body of handwritten text on the left page, written in cursive style.

しきり

Main body of handwritten text on the left page, written in cursive style.

しきり

跡見

御一新の御書
御書
御書

七日

御書
御書

御書
御書

御書
御書

御書
御書

御書
御書

御書
御書

御書
御書

御書
御書

御書

西宮

今利物此二所須

一在御所... 一書院... 一書院... 一書院...

御所... 書院... 書院... 書院...

書院... 書院... 書院... 書院...

書院... 書院... 書院... 書院...

書院... 書院... 書院... 書院...

書院... 書院... 書院... 書院...

書院... 書院... 書院... 書院...

書院... 書院... 書院... 書院...

御所

御所... 御所... 御所... 御所...

御所... 御所... 御所... 御所...

御所... 御所... 御所... 御所...

一 又の意一 由の事一 系の事 任はる
 一 任の事 任はる 任はる 任はる
 一 任の事 任はる 任はる 任はる
 一 任の事 任はる 任はる 任はる

一 任の事 任はる 任はる 任はる
 一 任の事 任はる 任はる 任はる
 一 任の事 任はる 任はる 任はる
 一 任の事 任はる 任はる 任はる

一 任の事 任はる 任はる 任はる
 一 任の事 任はる 任はる 任はる
 一 任の事 任はる 任はる 任はる
 一 任の事 任はる 任はる 任はる

御書

46 47

一 中村師之 二 方安 三 寺主 四 中 五 上 六 下
 七 八 九 十 十一 十二 十三 十四 十五 十六 十七 十八 十九 二十
 二十一 二十二 二十三 二十四 二十五 二十六 二十七 二十八 二十九 三十
 三十一 三十二 三十三 三十四 三十五 三十六 三十七 三十八 三十九 四十
 四十一 四十二 四十三 四十四 四十五 四十六 四十七 四十八 四十九 五十
 五十一 五十二 五十三 五十四 五十五 五十六 五十七 五十八 五十九 六十
 六十一 六十二 六十三 六十四 六十五 六十六 六十七 六十八 六十九 七十
 七十一 七十二 七十三 七十四 七十五 七十六 七十七 七十八 七十九 八十
 八十一 八十二 八十三 八十四 八十五 八十六 八十七 八十八 八十九 九十
 九十一 九十二 九十三 九十四 九十五 九十六 九十七 九十八 九十九 一百

五月水

和日 五月水

一 寺主 二 寺主 三 寺主 四 寺主 五 寺主 六 寺主 七 寺主 八 寺主 九 寺主
 十 寺主 十一 寺主 十二 寺主 十三 寺主 十四 寺主 十五 寺主 十六 寺主 十七 寺主 十八 寺主
 十九 寺主 二十 寺主 二十一 寺主 二十二 寺主 二十三 寺主 二十四 寺主 二十五 寺主 二十六 寺主
 二十七 寺主 二十八 寺主 二十九 寺主 三十 寺主 三十一 寺主 三十二 寺主 三十三 寺主 三十四 寺主
 三十五 寺主 三十六 寺主 三十七 寺主 三十八 寺主 三十九 寺主 四十 寺主 四十一 寺主 四十二 寺主
 四十三 寺主 四十四 寺主 四十五 寺主 四十六 寺主 四十七 寺主 四十八 寺主 四十九 寺主 五十 寺主
 五十一 寺主 五十二 寺主 五十三 寺主 五十四 寺主 五十五 寺主 五十六 寺主 五十七 寺主 五十八 寺主
 五十九 寺主 六十 寺主 六十一 寺主 六十二 寺主 六十三 寺主 六十四 寺主 六十五 寺主 六十六 寺主
 六十七 寺主 六十八 寺主 六十九 寺主 七十 寺主 七十一 寺主 七十二 寺主 七十三 寺主 七十四 寺主
 七十五 寺主 七十六 寺主 七十七 寺主 七十八 寺主 七十九 寺主 八十 寺主 八十一 寺主 八十二 寺主
 八十三 寺主 八十四 寺主 八十五 寺主 八十六 寺主 八十七 寺主 八十八 寺主 八十九 寺主 九十 寺主
 九十一 寺主 九十二 寺主 九十三 寺主 九十四 寺主 九十五 寺主 九十六 寺主 九十七 寺主 九十八 寺主
 九十九 寺主 一百 寺主

中... 日...

一... 日...

一... 日...

一... 日...

一... 日...

一... 日...

一... 日...

一... 日...

一... 日...

一... 日...

一... 日...

一... 日...

一... 日...

一... 日...

藤原氏は橘公房の御子と云はれ
ゆへに

古直
古直 藤原氏に橘公房の御子と云はれ

古直

藤原氏は橘公房の御子と云はれ
ゆへに橘公房の御子と云はれ
ゆへに橘公房の御子と云はれ
ゆへに橘公房の御子と云はれ

一 下市橘公房の御子と云はれ

一 藤原氏は橘公房の御子と云はれ

一 橘公房の御子と云はれ

一 藤原氏は橘公房の御子と云はれ

一 橘公房の御子と云はれ

一 藤原氏は橘公房の御子と云はれ

一 橘公房の御子と云はれ

工部
... 傳之... 口... 口... 口...
...

才... 百... 而... 風...
... 海... 寧... 公... 為... 無... 以... 福... 澤...
... 以... 以... 勿... 勿... 難... 於... 相... 而... 宜...
... 也... 是... 亦... 亦... 亦... 亦... 亦... 亦... 亦... 亦...
... 也... 也... 也... 也... 也... 也... 也... 也...
... 也... 也... 也... 也... 也... 也... 也... 也...

... 乃... 乃... 乃... 乃... 乃... 乃... 乃... 乃...
... 乃... 乃... 乃... 乃... 乃... 乃... 乃... 乃...
... 乃... 乃... 乃... 乃... 乃... 乃... 乃... 乃...
... 乃... 乃... 乃... 乃... 乃... 乃... 乃... 乃...
... 乃... 乃... 乃... 乃... 乃... 乃... 乃... 乃...
... 乃... 乃... 乃... 乃... 乃... 乃... 乃... 乃...
... 乃... 乃... 乃... 乃... 乃... 乃... 乃... 乃...
... 乃... 乃... 乃... 乃... 乃... 乃... 乃... 乃...

... 乃... 乃... 乃... 乃... 乃... 乃... 乃... 乃...
... 乃... 乃... 乃... 乃... 乃... 乃... 乃... 乃...
... 乃... 乃... 乃... 乃... 乃... 乃... 乃... 乃...
... 乃... 乃... 乃... 乃... 乃... 乃... 乃... 乃...

科 命 命 命 命 命 命 命 命 命 命
得 得 得 得 得 得 得 得 得 得
心 心 心 心 心 心 心 心 心 心
右 右 右 右 右 右 右 右 右 右
中 中 中 中 中 中 中 中 中 中
日 日 日 日 日 日 日 日 日 日
日 日 日 日 日 日 日 日 日 日
日 日 日 日 日 日 日 日 日 日

一 恒 例 命 命 命 命 命 命 命 命 命 命

一 普 同 命 命 命 命 命 命 命 命 命 命
一 千 反 命 命 命 命 命 命 命 命 命 命
一 不 活 命 命 命 命 命 命 命 命 命 命

本 日 命 命 命 命 命 命 命 命 命 命
新 命 命 命 命 命 命 命 命 命 命
中 命 命 命 命 命 命 命 命 命 命
事 命 命 命 命 命 命 命 命 命 命

久美抄 卷之五 終

大日本書紀 卷之五 終

其首

川自海之流... 諸部... 丁... 初... 手...

一 其の初

其の初... 備... 去... 或... 死... 仁... 一... 一...

大日本書紀 卷之五 終

一 竹の子車同... 竹の子車同... 竹の子車同...

一 竹の子車同... 竹の子車同... 竹の子車同...

一 竹の子車同... 竹の子車同... 竹の子車同...

一 竹の子車同... 竹の子車同... 竹の子車同...

一 竹の子車同... 竹の子車同... 竹の子車同...

一 竹の子車同... 竹の子車同... 竹の子車同...

一 竹の子車同... 竹の子車同... 竹の子車同...

一 竹の子車同... 竹の子車同... 竹の子車同...

一 竹の子車同... 竹の子車同... 竹の子車同...

今更之字又

佛代作也

今更之字又

初布南打二年百

初布南打二年百

初布南打二年百

初布南打二年百



Faint handwritten text on the left page, including characters like '初布南打'.

利く出づる得ん事あり
与りて入れば大徳あり

以衆之護の申上り

持主札名唐紙一枚

今とて行し列あり

下合のらりて方書

諸里計し中り

由は年々入るる日

時号記起る新

元号記起る新

元号記起る新

Handwritten Japanese text in cursive style (sōsho), likely a letter or document. The text is written on aged, yellowed paper with some damage and bleed-through from the reverse side. The characters are dense and fluid, characteristic of the cursive script. The text is arranged in vertical columns, reading from right to left. The paper shows signs of wear, including tears and discoloration, particularly along the edges and in the center fold.

松林院領大和國直野原庄事

為據長原直野原庄及物持地

三書者大和國直野原庄

持地長原直野原庄

三書者大和國直野原庄

持地長原直野原庄

三書者大和國直野原庄

持地長原直野原庄

文明元年五月廿七日

Handwritten signatures and names in cursive script, including names like 'Shōmei' and 'Shōmei'.

Handwritten text in cursive script, likely a continuation from the previous page.

Handwritten text in cursive script, likely a continuation from the previous page.

Handwritten text in cursive script, likely a continuation from the previous page.

Handwritten text in cursive script, likely a continuation from the previous page.

Handwritten text in cursive script, likely a continuation from the previous page.

Handwritten text in cursive script, likely a continuation from the previous page.

Handwritten text in cursive script, likely a continuation from the previous page.

Handwritten text in cursive script, likely a continuation from the previous page.

Handwritten text in cursive script, likely a continuation from the previous page.

Handwritten text in cursive script, likely a continuation from the previous page.

Handwritten text in cursive script, likely a continuation from the previous page.

Handwritten text in cursive script, likely a continuation from the previous page.

Handwritten text in cursive script, likely a continuation from the previous page.

Handwritten text in cursive script, likely a continuation from the previous page.

Handwritten text in cursive script, likely a continuation from the previous page.

Handwritten text in cursive script, likely a continuation from the previous page.

Handwritten text in cursive script, likely a continuation from the previous page.

Handwritten text in cursive script, likely a continuation from the previous page.

一、
二、
三、
四、
五、
六、
七、
八、
九、
十、

一、
二、
三、
四、
五、
六、
七、
八、
九、
十、

一、
二、
三、
四、
五、
六、
七、
八、
九、
十、

一、
二、
三、
四、
五、
六、
七、
八、
九、
十、

一、
二、
三、
四、
五、
六、
七、
八、
九、
十、

一、
二、
三、
四、
五、
六、
七、
八、
九、
十、

Handwritten characters at the top of the page.

Handwritten characters, possibly a signature or title, including the character '利'.

Main body of handwritten text on the right page, including the character '利'.

Main body of handwritten text on the left page, including the characters '須道'.

Bottom section of handwritten text on the left page.

Handwritten text in a cursive script, likely a historical document or manuscript. The text is written in dark ink on aged, yellowish paper. The script is highly stylized and dense, characteristic of traditional East Asian calligraphy. The text is arranged in vertical columns, reading from right to left. There are several large characters that appear to be section markers or significant words, such as '一' (one) and '二' (two). The paper shows signs of wear, including creases and discoloration.

Handwritten text on the left edge of the left page.

Handwritten text on the left page, including a large character '一' at the top.

Handwritten text on the right page of the left leaf, including a large character '一' at the top.

Handwritten text on the right page of the right leaf, including a large character '一' at the top.

...
...
...
...
...

...
...
...
...
...

...
...
...
...
...

...
...
...
...
...

...
...
...
...
...

...
...
...
...
...

...
...
...
...
...

...
...
...
...
...

...
...
...
...
...

...
...
...
...
...

...
...
...
...
...

...
...
...
...
...

...
...
...
...
...

共名... 押印... 押印...

押印... 押印... 押印...

押印...

押印...

押印... 押印...

押印... 押印...

押印... 押印...

押印... 押印...

押印... 押印...

押印... 押印...

押印... 押印...

Handwritten text in a cursive script, likely a personal letter or a note. The characters are dense and difficult to decipher due to the cursive style.

Handwritten text in a cursive script, continuing the message from the previous page. The ink is dark and the paper shows signs of age and wear.

Handwritten text in a cursive script, possibly a signature or a specific address line. The characters are more distinct than in the main body of text.

Handwritten characters, possibly a name or a specific reference, written in a cursive style.

Handwritten characters, possibly a name or a specific reference, written in a cursive style.

Handwritten text in a cursive script, continuing the message from the previous page. The ink is dark and the paper shows signs of age and wear.

Handwritten text in a cursive script, continuing the message from the previous page. The ink is dark and the paper shows signs of age and wear.

Handwritten text in a cursive script, possibly a signature or a specific address line. The characters are more distinct than in the main body of text.

1 塔那那馬里波納

an'ny

1 利寧格勒

ny'ny

ny'ny

ny'ny

ny'ny

ny'ny

ny'ny

ny'ny

ny'ny

ny'ny

ny'ny

ny'ny

ny'ny

ny'ny

ny'ny

ny'ny

Handwritten text on the right edge of the page, possibly a date or reference number.

Handwritten text line 1, starting with a vertical stroke.

Handwritten text line 2, starting with a vertical stroke.

Handwritten text line 3, starting with a vertical stroke.

Handwritten text line 4, starting with a vertical stroke.

Handwritten text line 5, starting with a vertical stroke.

Handwritten text line 6, starting with a vertical stroke.

Handwritten text line 7, starting with a vertical stroke.

Handwritten text line 8, starting with a vertical stroke.

Handwritten text line 9, starting with a vertical stroke.

Handwritten text line 10, starting with a vertical stroke.

Handwritten text line 11, starting with a vertical stroke.

Handwritten text line 12, starting with a vertical stroke.

Handwritten text line 13, starting with a vertical stroke.

Handwritten text line 14, starting with a vertical stroke.

Handwritten text line 15, starting with a vertical stroke.

Handwritten text line 16, starting with a vertical stroke.

Handwritten text line 17, starting with a vertical stroke.

Handwritten text line 18, starting with a vertical stroke.

Handwritten text line 19, starting with a vertical stroke.

Handwritten text line 20, starting with a vertical stroke.

Handwritten text line 21, starting with a vertical stroke.

Handwritten text line 22, starting with a vertical stroke.

Handwritten text line 23, starting with a vertical stroke.

Handwritten text line 24, starting with a vertical stroke.

Handwritten text line 25, starting with a vertical stroke.

Handwritten text line 26, starting with a vertical stroke.

Handwritten text line 27, starting with a vertical stroke.

Handwritten text line 28, starting with a vertical stroke.

Handwritten text in a cursive script, likely a historical document or manuscript. The text is written on aged, yellowed paper and is organized into several vertical columns. The script is dense and characteristic of early modern Japanese calligraphy. The document is divided into two pages by a central vertical crease. The right page contains approximately 10 columns of text, while the left page contains approximately 10 columns. The text appears to be a formal record or a set of instructions, given the structured layout and the use of vertical lines to separate columns. The ink is dark, and the paper shows signs of wear, including some staining and discoloration, particularly near the edges and the central fold.

Handwritten text in a cursive script, likely a personal letter or diary entry. The text is written on aged, yellowed paper and is mostly illegible due to the style and fading.

Handwritten text in a cursive script, continuing the narrative or list from the previous section. The ink is dark and the paper shows signs of wear.

Handwritten text in a cursive script, the final section of the document. It includes some larger characters and a distinct signature or mark at the bottom left.

Handwritten title or header in cursive script, possibly containing the name of the document or a date.

Handwritten text in cursive script, likely the beginning of a letter or a section of a document.

Handwritten text in cursive script, continuing the previous section.

Handwritten text in cursive script, continuing the previous section.

Handwritten text in cursive script, continuing the previous section.

Handwritten text in cursive script, continuing the previous section.

Handwritten text in cursive script, continuing the previous section.

Handwritten text in cursive script, continuing the previous section.

Handwritten text in cursive script, continuing the previous section.

Handwritten text in cursive script, continuing the previous section.

Handwritten text in cursive script, continuing the previous section.

Handwritten text in cursive script, continuing the previous section.

Handwritten text in cursive script, continuing the previous section.

Handwritten text in cursive script, continuing the previous section.

Handwritten text in cursive script, continuing the previous section.

Handwritten text in cursive script, continuing the previous section.

Handwritten text in cursive script, continuing the previous section.

Handwritten text in cursive script, continuing the previous section.

1. 一、
二、

三、
四、

五、
六、

七、
八、

九、
十、

十一、
十二、

十三、
十四、

十五、
十六、

十七、
十八、

十九、
二十、

二十一、
二十二、

Handwritten Japanese text in cursive (sōsho) style, spanning two pages of aged paper. The text is dense and difficult to decipher due to the highly stylized characters and significant ink bleed-through from the reverse side. The paper shows signs of wear, including tears and discoloration.

Handwritten Japanese text in cursive (sōsho) style, spanning two pages. The text is densely packed and includes several large characters, possibly indicating a title or key phrases. The paper shows signs of age and wear, with some staining and foxing.

Handwritten text in a cursive script, likely a list or account. The text is written in dark ink on aged, yellowish paper. It appears to be a list of items or transactions, possibly related to a household or a small business. The characters are somewhat stylized and difficult to decipher precisely, but they seem to follow a structured format, possibly including names, quantities, and prices.



Handwritten text in a cursive script, continuing the list or account from the previous page. The text is written in dark ink on aged, yellowish paper. It appears to be a list of items or transactions, possibly related to a household or a small business. The characters are somewhat stylized and difficult to decipher precisely, but they seem to follow a structured format, possibly including names, quantities, and prices.

Handwritten text in a cursive script, continuing the list or account from the previous page. The text is written in dark ink on aged, yellowish paper. It appears to be a list of items or transactions, possibly related to a household or a small business. The characters are somewhat stylized and difficult to decipher precisely, but they seem to follow a structured format, possibly including names, quantities, and prices.

36 30

Handwritten text in a cursive script, possibly a list or account. The text is written on aged, yellowed paper. It includes several lines of characters, some of which appear to be numbers or specific terms, though they are difficult to decipher due to the cursive style and fading.

Handwritten text in a cursive script, continuing the list or account from the previous page. It features several lines of characters, including what looks like a number '1' at the beginning of a line.

Handwritten text in a cursive script, continuing the list or account. It includes several lines of characters, with a prominent '1' at the start of the first line.

Handwritten text in a cursive script, continuing the list or account. It includes several lines of characters, with a prominent '1' at the start of the first line.

Handwritten text in a cursive script, continuing the list or account. It includes several lines of characters, with a prominent '1' at the start of the first line.

Handwritten text in a cursive script, likely a list or account. The characters are dense and difficult to decipher, but appear to be organized into several lines.

Handwritten text in a cursive script, continuing the list or account from the previous page. The characters are dense and difficult to decipher.

Handwritten text in a cursive script, continuing the list or account from the previous page. The characters are dense and difficult to decipher.

Handwritten text in a cursive script, possibly a signature or a specific entry at the bottom of the page.

此乃... 卷之... 作

穢... 卷之... 作

穢... 卷之... 作

尸... 卷之... 作

精... 卷之... 作

... 卷之... 作

... 卷之... 作

... 卷之... 作

... 卷之... 作

Handwritten text in a cursive script, likely representing a list or account. The text is written in a fluid, connected style across several lines.

對馬島

Handwritten text in a cursive script, continuing the list or account from the previous page. The characters are densely packed and flow across the lines.

復

Handwritten text in a cursive script, possibly a continuation or a separate entry. The script is consistent with the rest of the document.

Additional handwritten text at the bottom of the page, appearing as a separate note or signature.

Handwritten text at the top of the page, possibly a header or title.

Handwritten text, likely a date or reference number.

Handwritten text, possibly a name or title.

Handwritten text, possibly a name or title.

Handwritten text, possibly a name or title.

Handwritten text, possibly a name or title.

Handwritten text, possibly a name or title.

Handwritten text, possibly a name or title.

Handwritten text, possibly a name or title.

Handwritten text, possibly a name or title.

Handwritten text, possibly a name or title.

Handwritten text, possibly a name or title.

Handwritten text, possibly a name or title.

十四日

...

...

...

...

...

...

...

...

...

...

...

...

...

入

石波美乃心印各

又乃心印各

乃心印各

乃心印各

乃心印各

乃心印各

道之故也

乃心印各

乃心印各

54 from Eugene Oberall

12 女学... 12 女学... 12 女学...

12 女学... 12 女学... 12 女学...

12 女学... 12 女学... 12 女学...

12 女学... 12 女学... 12 女学...

12 女学... 12 女学... 12 女学...

12 女学... 12 女学... 12 女学...

12 女学... 12 女学... 12 女学...

12 女学... 12 女学... 12 女学...

12 女学... 12 女学... 12 女学...

12 女学... 12 女学... 12 女学...

12 女学... 12 女学... 12 女学...

Handwritten text in a cursive script, likely a form of shorthand or a specific dialect. The text is arranged in several lines, starting from the top right and moving downwards. The characters are highly stylized and difficult to decipher without a key.

中

Handwritten text in a cursive script, continuing from the top right. The text is arranged in several lines, starting from the top right and moving downwards. The characters are highly stylized and difficult to decipher without a key.

Handwritten text at the top of the right page, possibly a title or header.

和文

Main body of handwritten text on the right page, written in a cursive style.

Handwritten text at the top of the left page, possibly a title or header.

和文

Main body of handwritten text on the left page, written in a cursive style.

和文

Main body of handwritten text on the left page, written in a cursive style.

加

一

... ..

...

...

...

...

...

...

...

...

...

Handwritten text in a cursive script, likely a letter or document, located on the right side of the top page.

Handwritten text in a cursive script, located on the left side of the top page.

Handwritten text in a cursive script, located at the bottom of the top page.

Handwritten text in a cursive script, located on the left side of the bottom page.

Handwritten text in a cursive script, possibly a signature or a name, located at the top of the page.

Handwritten text in a cursive script, appearing to be a list or a series of entries, located in the upper middle section of the page.

Handwritten text in a cursive script, continuing the list or entries, located in the middle section of the page.

Handwritten text in a cursive script, forming the main body of the document, located in the lower middle section of the page.

Handwritten text in a cursive script, likely a list or account, starting with a vertical line and several characters.

Handwritten text in a cursive script, continuing the list or account with more characters.

Handwritten text in a cursive script, showing further entries in the list.

Handwritten text in a cursive script, possibly a signature or a specific entry.

Handwritten text in a cursive script, continuing the list.

Handwritten text in a cursive script, showing more entries.

Handwritten text in a cursive script, continuing the list.

Handwritten text in a cursive script, possibly a signature or a specific entry.

Handwritten text in a cursive script, continuing the list.

Handwritten text in a cursive script, showing further entries.

Handwritten text in a cursive script, continuing the list.

Handwritten text at the top left, partially obscured by a tear.

Handwritten text in the upper middle section, including a large character that appears to be '一'.

Handwritten text in the lower middle section, including a large character that appears to be '二'.

Handwritten text in the lower right section, including a large character that appears to be '三'.

Handwritten Japanese text in cursive style (sōsho) on aged, damaged paper. The text is arranged in vertical columns, reading from right to left. The paper shows significant wear, including tears and discoloration. The characters are dark ink on a light brown background.

Handwritten text in a cursive script, likely a signature or name, located at the top right of the page.

Handwritten text in a cursive script, located in the upper right section of the page.

Handwritten text in a cursive script, located in the middle right section of the page.

Handwritten text in a cursive script, located in the middle right section of the page.

Handwritten text in a cursive script, located in the middle right section of the page.

Handwritten text in a cursive script, located in the middle right section of the page.

Handwritten text in a cursive script, located in the middle right section of the page.

Handwritten text in a cursive script, located in the middle right section of the page.

Handwritten text in a cursive script, located in the middle right section of the page.

Handwritten text in a cursive script, located in the middle right section of the page.

Handwritten text in a cursive script, located in the middle right section of the page.

Handwritten text in a cursive script, located in the middle right section of the page.

Handwritten text in a cursive script, located in the middle right section of the page.

Handwritten text in a cursive script, located in the middle right section of the page.

Handwritten text in a cursive script, located in the middle right section of the page.

Handwritten text in a cursive script, located in the middle right section of the page.

Handwritten text in a cursive script, located in the middle right section of the page.

Handwritten text in a cursive script, located in the middle right section of the page.

一、
二、
三、
四、
五、
六、
七、
八、
九、
十、

一、
二、
三、
四、
五、
六、
七、
八、
九、
十、

一、
二、
三、
四、
五、
六、
七、
八、
九、
十、

一、
二、
三、
四、
五、
六、
七、
八、
九、
十、

一、
二、
三、
四、
五、
六、
七、
八、
九、
十、

一、
二、
三、
四、
五、
六、
七、
八、
九、
十、

一、
二、
三、
四、
五、
六、
七、
八、
九、
十、

一、
二、
三、
四、
五、
六、
七、
八、
九、
十、

一、
二、
三、
四、
五、
六、
七、
八、
九、
十、

一、
二、
三、
四、
五、
六、
七、
八、
九、
十、

一、
二、
三、
四、
五、
六、
七、
八、
九、
十、

Faint handwritten text at the top of the page, possibly bleed-through from the reverse side.

流傳田種紙乃心

Handwritten text in cursive script, likely a continuation of the main text.

Handwritten text in cursive script, continuing the flow of the document.

Handwritten text in cursive script, showing dense character arrangement.

Handwritten text in cursive script, with some characters appearing larger and more prominent.

Handwritten text in cursive script, possibly containing a specific name or title.

Handwritten text in cursive script, continuing the narrative or list.

Handwritten text in cursive script, showing a change in the style or rhythm of the writing.

Handwritten text in cursive script, with some characters appearing to be part of a signature or seal.

Handwritten text in cursive script, continuing the main body of the document.

Handwritten text in cursive script, showing a transition in the text's structure.

Handwritten text in cursive script, concluding the visible portion of the document.

Handwritten text in a cursive script, likely a historical document or letter. The text is written on aged, yellowed paper and is oriented vertically. It appears to be a list or a series of entries, with some lines starting with a vertical stroke. The characters are dense and difficult to decipher without specialized knowledge of the script.

1 叶乙丑

Handwritten text in a cursive script, continuing from the previous page. The text is written on aged, yellowed paper and is oriented vertically. It appears to be a list or a series of entries, with some lines starting with a vertical stroke. The characters are dense and difficult to decipher without specialized knowledge of the script.

Handwritten text in a cursive script, continuing from the previous page. The text is written on aged, yellowed paper and is oriented vertically. It appears to be a list or a series of entries, with some lines starting with a vertical stroke. The characters are dense and difficult to decipher without specialized knowledge of the script.

Handwritten text in the top right corner, possibly a date or reference number.

Handwritten text in the middle right section, appearing to be a list or series of entries.

Main body of handwritten text in the center, consisting of several lines of dense cursive script.

Handwritten text in the lower middle section, continuing the cursive script.

Handwritten text in the lower left section, continuing the cursive script.

Handwritten text in the bottom left section, continuing the cursive script.

Large, stylized handwritten characters in the bottom left, possibly a signature or seal.

Handwritten text in the bottom left corner, possibly a date or reference number.

新の石事

西の石事

東の石事

南の石事

北の石事

西の石事

東の石事

南の石事

北の石事

西の石事

石事

石事

55
x

紙
数
五
十
三
枚

