

尋憲記 十一

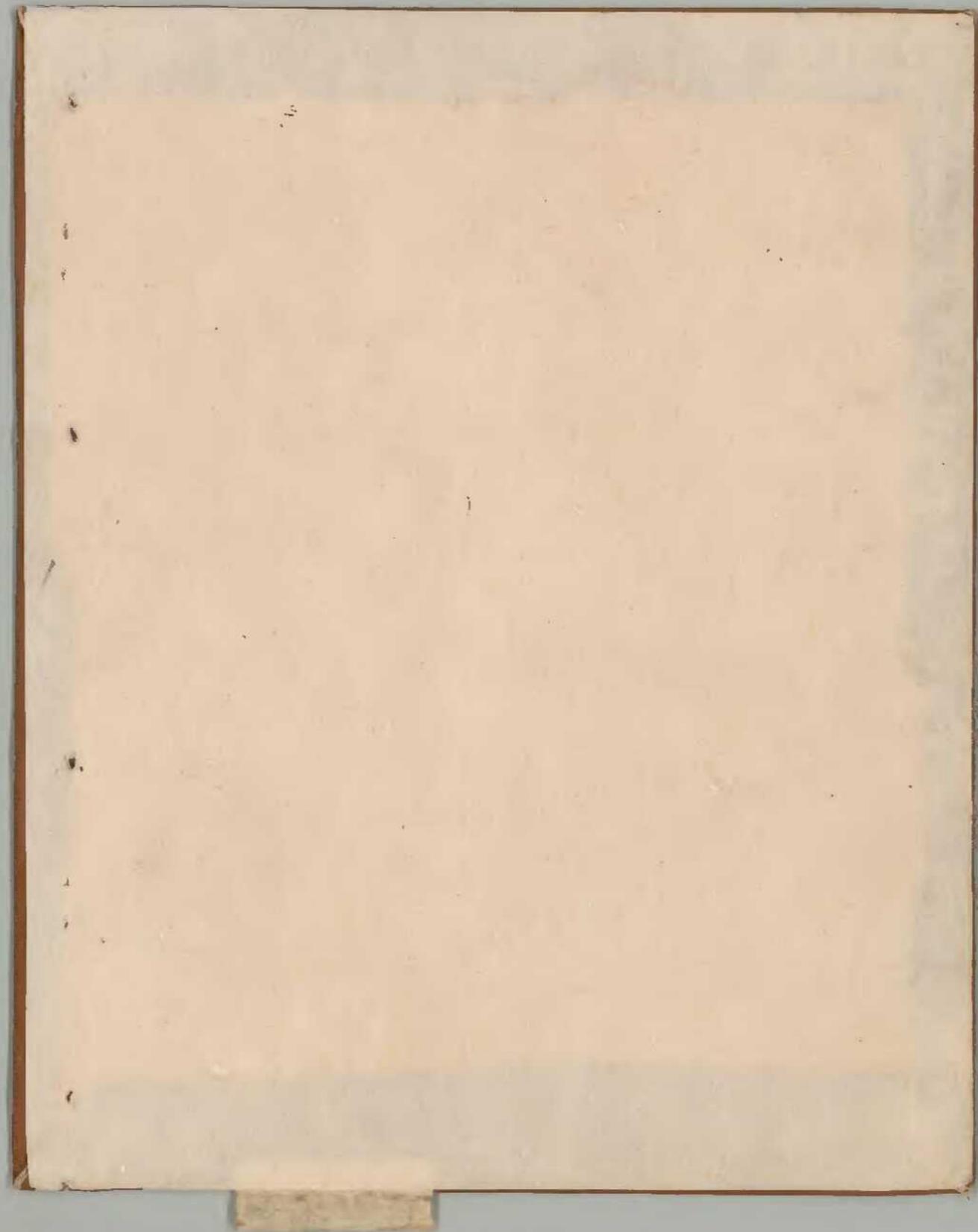
庫	文	閣	内
函	二	三	和
架	冊	號	類

書	文	古
三	三	函
六	六	共
號	號	二

内閣文庫		
番號	和	20931
冊數		12(11)
函號	古	22 366

尋憲記







天正五年丁酉八月廿一日

當年維摩會執行付条

一 當年大會執行付条 付使東林院若譽信所 副使本願寺方政久

春音石室恩丸室標丸以標丸 本寺中集會中集會中集會

一 有續行海軍金塊以之御中 中集會中集會中集會

一 廿六日中集會中集會中集會中集會中集會

一 廿七日大坂御使中集會中集會中集會中集會

一 下此中集會中集會中集會中集會

一 廿日中集會中集會中集會中集會中集會

一 廿日中集會中集會中集會中集會中集會

一 廿三日中集會中集會中集會中集會中集會

一 廿六日中集會中集會中集會中集會中集會

一 廿九日中集會中集會中集會中集會中集會

一 廿九日中集會中集會中集會中集會中集會

一 廿九日中集會中集會中集會中集會中集會

一 廿九日中集會中集會中集會中集會中集會

一 廿九日中集會中集會中集會中集會中集會

一 廿九日中集會中集會中集會中集會中集會



朱... 林...

林...

...

一廿日... 一廿二日... 一廿三日... 一廿四日... 一廿五日... 一廿六日... 一廿七日... 一廿八日... 一廿九日... 一三十日...





Handwritten text in a cursive script, possibly a signature or name.

Small handwritten characters or initials.

Handwritten text in a cursive script.

Handwritten text in a cursive script.

Handwritten text in a cursive script.

Handwritten text in a cursive script.

Handwritten text in a cursive script.

Handwritten text in a cursive script.

Handwritten text in a cursive script.

Handwritten text in a cursive script.

Handwritten text in a cursive script.



天正五年丁酉八月 日

當年維摩會可有執行付条々

八月九日



一 丙午大會下執行中大臣信正四房下  
法服考鑿制以大臣事出處等政久以五人  
之正任當年維摩會下執行定檢し兼大會取  
約忠告等見て事作し當年其後大會忠告仕立  
去當年其為執行用事薦し當年其後長以之  
に事執事等以て執行也下入下以事長以之  
に執行し之を以て執行し信正執行時  
に執行し之を以て執行し信正執行時  
に執行し之を以て執行し信正執行時

行し之を以て執行し信正執行時  
に執行し之を以て執行し信正執行時  
に執行し之を以て執行し信正執行時  
に執行し之を以て執行し信正執行時  
に執行し之を以て執行し信正執行時  
に執行し之を以て執行し信正執行時  
に執行し之を以て執行し信正執行時  
に執行し之を以て執行し信正執行時  
に執行し之を以て執行し信正執行時  
に執行し之を以て執行し信正執行時

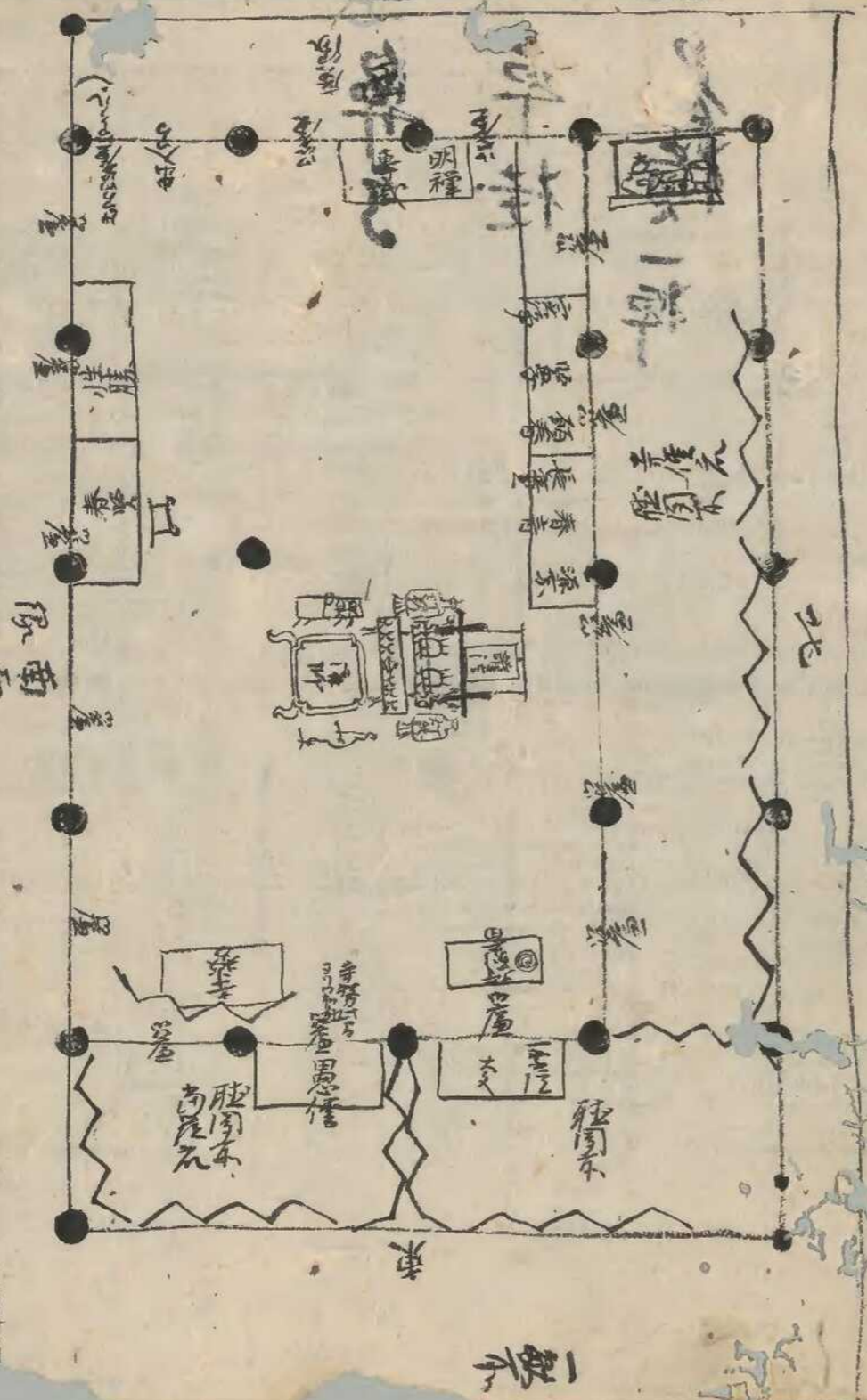
十二日

一 本十六日四房中集會下儀し  
一 本十六日四房中集會下儀し  
一 本十六日四房中集會下儀し  
一 本十六日四房中集會下儀し  
一 本十六日四房中集會下儀し  
一 本十六日四房中集會下儀し  
一 本十六日四房中集會下儀し  
一 本十六日四房中集會下儀し  
一 本十六日四房中集會下儀し  
一 本十六日四房中集會下儀し



一、東宝灌法辨執約年百二十位正格知之度大不傷正以居  
 可其約由之長之五擬於後或日之執約也定之同子居亦  
 教日法長也下下種師去多中位長之九分中位列高之五種位者與  
 四等勢上種園信正之種師身人慈息位種師身南坊春善觀  
 願春得業什其位聖子得業官淨之得業以種之別金春冰之借財  
 性勝之業位由之種性以延身人仕和以身事一未座在之種之  
 東 按師南正面東方上主之東南南方之寺勢日界園大信正身  
 同面北方控別高五種位法服孝與小之信正之種師身南坊春善觀  
 無在種師身之種師身北面種師身人少之信正之種師身南坊春善觀  
 願春得業什其位聖子得業官淨之得業以種之別金春冰之借財  
 性勝之業位由之種性以延身人仕和以身事一未座在之種之  
 春噴之信月代性勝之是也之身事一未座在之種之

十音



捐出為南正面出仕坊之寺勢與門之出仕在志在在左右之志向



















一 宛中集書川付

一 宛中集書川付

同五年丁未八月十六日 禪定院宛中集書評定日

一 抄抄方作付候旨

一 宛中集書川付

一 宛中集書川付

一 宛中集書川付

一 宛中集書川付

一 宛中集書川付

一 宛中集書川付

一 宛中集書川付

一 宛中集書川付

一 宛中集書川付

一 宛中集書川付

十七日

一 宛中集書川付

宛中集書川付

宛中集書川付

宛中集書川付

宛中集書川付

宛中集書川付

宛中集書川付







一 古くは... 廿六日... 運... 廿六日... 運... 廿六日... 運...

一 古くは... 廿七日... 運... 廿七日... 運... 廿七日... 運...

一 古くは... 廿八日... 運... 廿八日... 運... 廿八日... 運...

一 古くは... 廿九日... 運... 廿九日... 運... 廿九日... 運...

一 古くは... 三十日... 運... 三十日... 運... 三十日... 運...







九月朔日

詩

皇天

皇天上帝之靈在天上... 皇天上帝之靈在天上... 皇天上帝之靈在天上...

詩

皇天上帝之靈在天上... 皇天上帝之靈在天上... 皇天上帝之靈在天上...

詩

皇天上帝之靈在天上... 皇天上帝之靈在天上... 皇天上帝之靈在天上...

皇天上帝之靈在天上... 皇天上帝之靈在天上... 皇天上帝之靈在天上...

且納

昇庄御 辰錢之奉

命 立古文者 目下 彦才

皇天

奉符 皇天正五年 九月 朔 祭

皇天上帝之靈在天上... 皇天上帝之靈在天上... 皇天上帝之靈在天上...

皇天上帝之靈在天上... 皇天上帝之靈在天上... 皇天上帝之靈在天上...



七日

一 天候、霧を帯び、仍ほ下るる。後、霧も去り、

雨となり。井原を以て、  
古く申す、

一 福嶋平左、三ヶ井原を以て、  
今、雨となり、  
今、雨となり、

一 上外、白石を以て、  
今、雨となり、

八日

一 幸、雨を以て、  
今、雨となり、

今、雨となり、  
今、雨となり、

今、雨となり、  
今、雨となり、

今、雨となり、  
今、雨となり、

今、雨となり、  
今、雨となり、

今、雨となり、  
今、雨となり、

今、雨となり、  
今、雨となり、

今、雨となり、  
今、雨となり、

今、雨となり、  
今、雨となり、



Handwritten notes at the top right of the page, possibly a title or header.

Main body of handwritten text on the right side of the page, written in a cursive style.

Second column of handwritten text on the right side, continuing the main body.

Third column of handwritten text on the right side.

Fourth column of handwritten text on the right side.

Fifth column of handwritten text on the right side.

Sixth column of handwritten text on the right side.

Handwritten text on the left side of the page, possibly a separate entry or note.



一 古本古書之書名  
一 古本古書之書名  
一 古本古書之書名

一 古本古書之書名  
一 古本古書之書名  
一 古本古書之書名

一 古本古書之書名  
一 古本古書之書名  
一 古本古書之書名

一 古本古書之書名  
一 古本古書之書名  
一 古本古書之書名

一 古本古書之書名  
一 古本古書之書名  
一 古本古書之書名

一 古本古書之書名  
一 古本古書之書名  
一 古本古書之書名



Handwritten text at the top of the page, possibly a title or header.

Main body of handwritten text, consisting of several lines of cursive script.

本日

Second section of handwritten text, starting with a vertical line.

Third section of handwritten text, starting with a vertical line.

Fourth section of handwritten text, starting with a vertical line.

Fifth section of handwritten text, starting with a vertical line.

Sixth section of handwritten text, starting with a vertical line.



















中好公在甲

宗卷

頌禪

長頭

鏡禪

湯教

春學

長學

頌禪

長延

頌禪

長頭

淨頭

淨思

延教

禪法

香賢

頌禪

長壽

延賢

長壽

長國

善禪

不禪

榮禪

春學

榮頭

來 廿八日

傳授一獻可

九月日

午身定 維摩會緣起

肯被仰出 未傳也

忍賢房法印

頌思之信部

性賢之信部

專勝之

頌春之

延壽之得業

依目之

明禪

長印

乘賢

春學

行專

形部 仰

頌觀

實賢之信部

舞行之

禪長

頌春

實禪之信部

長運

松賢

圓死

歲賢

春教

學樂

春樂房後任部

專賢之信部

治部 仰

春聖

榮勤

別會之仰

竟思之得業

專竟

湯賢

禪歡

專歡

定樂

樂賢

Handwritten marginal notes on the left edge of the page.







一 可下年一又そ右そ身中筆合れお千三百廿二夜アリ

一 可下年一又そ右そ身中筆合れお千三百廿二夜アリ

一 可下年一又そ右そ身中筆合れお千三百廿二夜アリ

一 可下年一又そ右そ身中筆合れお千三百廿二夜アリ

一 可下年一又そ右そ身中筆合れお千三百廿二夜アリ

一 可下年一又そ右そ身中筆合れお千三百廿二夜アリ

一 可下年一又そ右そ身中筆合れお千三百廿二夜アリ

一 可下年一又そ右そ身中筆合れお千三百廿二夜アリ

一 可下年一又そ右そ身中筆合れお千三百廿二夜アリ

一 可下年一又そ右そ身中筆合れお千三百廿二夜アリ

一 可下年一又そ右そ身中筆合れお千三百廿二夜アリ

一 可下年一又そ右そ身中筆合れお千三百廿二夜アリ















一 此種...

一 此種...

一 此種...

一 此種...

一 此種...

一 此種...

一 此種...

一 此種...

一 此種...

一 此種...

一 此種...

一 此種...

一 此種...

海日

一 此種...

一 此種...

一 此種...

一 此種...

一 此種...

一 此種...

一 此種...

一 此種...

一 此種...

一 此種...

一 此種...

一 此種...



Shirayama

28

一 常盤寺の事... 常盤寺の事... 常盤寺の事...

一 十月三日... 十月三日... 十月三日...

十月日

朔日

一 十月三日... 十月三日... 十月三日...

二日

一 十月三日... 十月三日... 十月三日...

一 十月三日... 十月三日... 十月三日...

一 十月三日... 十月三日... 十月三日...

一 十月三日... 十月三日... 十月三日...

一 十月三日... 十月三日... 十月三日...

一 十月三日... 十月三日... 十月三日...

一 十月三日... 十月三日... 十月三日...

一 十月三日... 十月三日... 十月三日...

一 十月三日... 十月三日... 十月三日...



















Vertical text on the right side of the page, likely bleed-through from the reverse side. It contains several columns of characters, including what appears to be a date or reference number '33'.

一沈山寺淨用舞淨女名款...

古情之元

後智惠光湯房...

一沈山寺淨用舞淨女名款...

長岳寺 禪徒寺 上進八貫文

御定役教覽

永久寺 學衆方 上進十貫文  
禪徒寺 上進六貫文

淨寺

平等寺 兩座 上進七貫文

淨寺

安位寺 兩座 上進四貫文

淨寺

信貴山兩座 上進八貫文

淨寺

攝寺 上進二貫八百五十文 惠皆五百文

淨寺

中山寺 上進二貫文 養生寺兩座

上進一貫文 千石丸

差檜皮座眾 上進二貫文

符級座中 上進三貫文







Handwritten text in the rightmost column, likely bleed-through from the reverse side of the page.

Handwritten text in the second column from the right, including characters like '借' and '會'.

Handwritten text in the third column from the right, including characters like '法' and '貴'.

Handwritten text in the fourth column from the right, including characters like '長' and '谷'.

Handwritten text in the fifth column from the right, including characters like '日' and '會'.

Handwritten text in the sixth column from the right, including characters like '大' and '會'.

Handwritten text in the seventh column from the right, including characters like '維' and '摩'.

Handwritten text in the eighth column from the right, including characters like '淨' and '起'.

Handwritten text in the ninth column from the right, including characters like '法' and '眼'.

Handwritten text in the tenth column from the right, including characters like '納' and '會'.

Handwritten text in the eleventh column from the right, including characters like '平' and '會'.

Handwritten text in the twelfth column from the right, including characters like '會' and '會'.







白鳥

印号

漢書三ノウ  
又林 海右三ノ海

印号

印号

印号

印号

七ノ板信

信服表表

中書

將家

大將

將家

大將

將家

大將

將家

大將

將家

36

白鳥

印号

印号

印号

印号

印号

印号

印号

印号

印号

印号

印号

印号

印号

印号

印号

印号

印号

印号

印号











大分

六

内サリ方

二ツ

ハキリ

五

モチツケ

十五

サビツ

三ツ

大分

一ツ

ツルハ

二ツ

ミツケ

五

サコ

五

キリ

八

サコ

二

サロ

二ツ

サシ

五

ヒラサキ

十

アワラ

三

サシ

二

ワラ

三

六

十

ミソ

五

サシ

十

一

一紙方

赤飯

サニ

アツキ

三

辛

四

大

百

牛

四

コ

三

一

三

サ

五

シ

三

ス

五

サ

三

ノ

五

ミ

カ

コ

カ

一

一紙方

飯

甘

酒

甘



うらみ

廿八

ツケモノ

ナツノリ

ツケモノ

三十一

ナツノリ

ツケモノ

三十一

ナツノリ

三十一

ツケモノ

三十一

ナツノリ

ツケモノ

ナツノリ

ツケモノ

ナツノリ

三十一

ツケモノ

ナツノリ

三十一

廿二日

一 右長集係記、川新、松之、地、の、事、を、記、す。

一 山、屋、作、り、の、事、を、本、庫、に、記、す、事、を、記、す、之、を、お、も、て、記、す。

一 初、度、下、付、の、事、を、記、す。

廿二日

一 山、屋、作、り、の、事、を、記、す。

若、權、は、左、右、の、事、を、記、す、事、を、記、す、之、を、お、も、て、記、す。

山、屋、作、り、の、事、を、記、す、事、を、記、す、之、を、お、も、て、記、す。

山、屋、作、り、の、事、を、記、す、事、を、記、す、之、を、お、も、て、記、す。

一 山、屋、作、り、の、事、を、記、す。

廿二日















Handwritten text on the right edge of the page, possibly a title or page number.

Main body of handwritten text in vertical columns, likely a list or record of items.

Table with 2 columns and 1 row of text.

Table with 2 columns and 1 row of text.

Table with 2 columns and 1 row of text.

Vertical handwritten text on the left margin.







長生寺子元一人雅性寺一人為人深沈寺子幼其性嚴

長生寺子元一人雅性寺一人為人深沈寺子幼其性嚴

長生寺子元一人雅性寺一人為人深沈寺子幼其性嚴

長生寺子元一人雅性寺一人為人深沈寺子幼其性嚴

長生寺子元一人雅性寺一人為人深沈寺子幼其性嚴

長生寺子元一人雅性寺一人為人深沈寺子幼其性嚴

長生寺子元一人雅性寺一人為人深沈寺子幼其性嚴

長生寺子元一人雅性寺一人為人深沈寺子幼其性嚴

長生寺子元一人雅性寺一人為人深沈寺子幼其性嚴

長生寺子元一人雅性寺一人為人深沈寺子幼其性嚴

長生寺子元一人雅性寺一人為人深沈寺子幼其性嚴

長生寺子元一人雅性寺一人為人深沈寺子幼其性嚴

長生寺子元一人雅性寺一人為人深沈寺子幼其性嚴

長生寺子元一人雅性寺一人為人深沈寺子幼其性嚴

長生寺子元一人雅性寺一人為人深沈寺子幼其性嚴

長生寺子元一人雅性寺一人為人深沈寺子幼其性嚴







一寛永連... 一寛永... 一寛永...

二日

一寛永... 一寛永...

一寛永... 一寛永...

一寛永... 一寛永...

一寛永... 一寛永...

一寛永... 一寛永...

一寛永... 一寛永...

一寛永... 一寛永...

一寛永... 一寛永...

一寛永... 一寛永...

一寛永... 一寛永...

一寛永... 一寛永...

一寛永... 一寛永...

一寛永... 一寛永...

一寛永... 一寛永...

一寛永... 一寛永...

一寛永... 一寛永...



Handwritten text at the top of the page, likely a title or introductory notes.

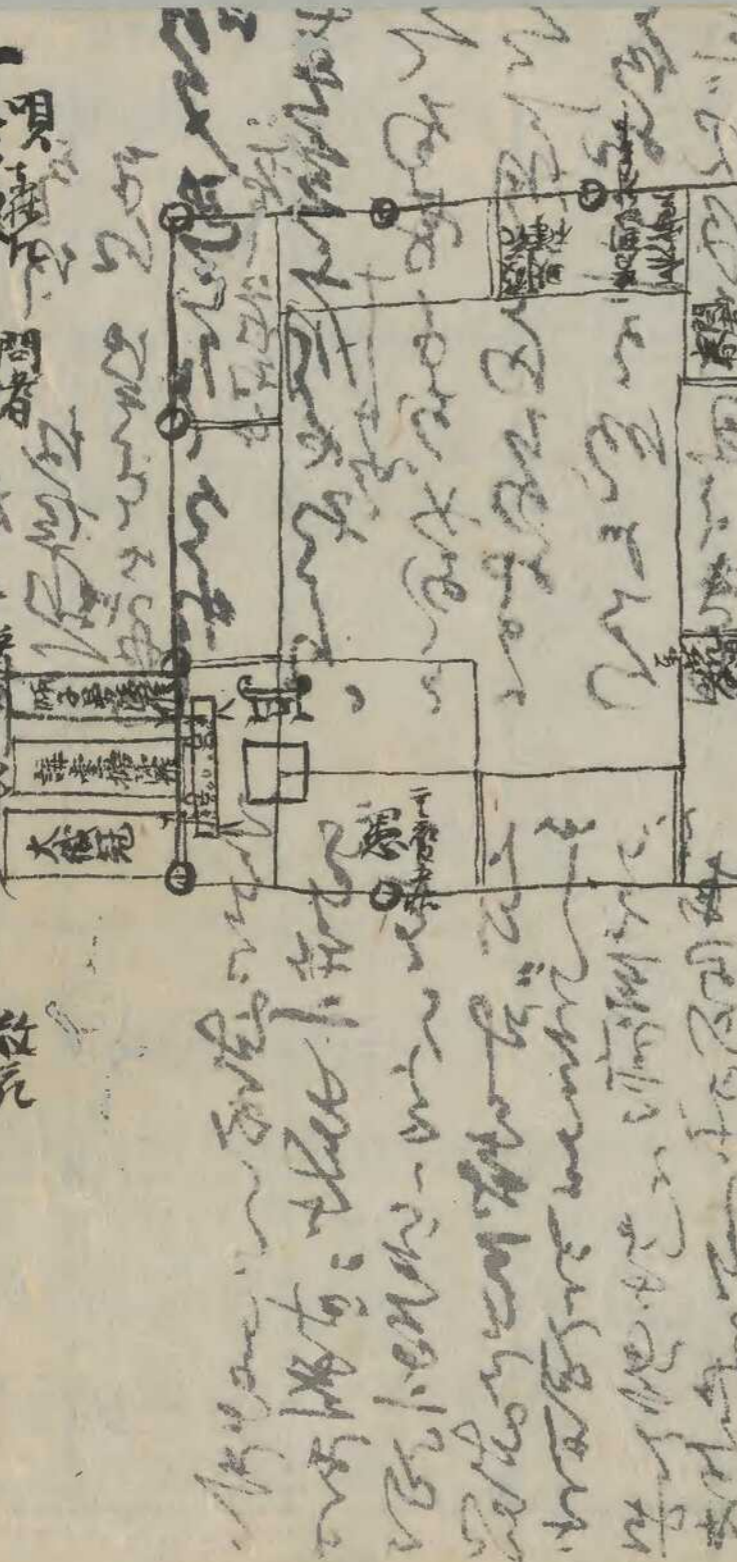
Handwritten text in the upper right section, possibly describing a concept or method.

Handwritten text in the middle right section, continuing the notes.

Handwritten text in the lower right section, providing further details.

Handwritten text in the lower middle section, likely a conclusion or summary.

Handwritten text in the lower left section, possibly a reference or additional notes.



一考... 春音... 長實... 明... 敬... 手... 座... 鉢... 二... 打... 明... 教... 花... 色... 一... 打... 揚... 起... 只... 內

Handwritten text on the far left edge of the page.







Handwritten text in a cursive script, likely a historical document or manuscript. The text is written on aged, yellowed paper and is organized into several lines. The script is dense and characteristic of early modern Japanese calligraphy. The document appears to be a list or a series of entries, possibly related to a collection or inventory. The text is written in a cursive style, with some characters being more prominent than others. The paper shows signs of wear, including creases and discoloration. The overall appearance is that of an old, well-used manuscript.



九月

一 春暮の候に...

一 春暮の候に...

一 春暮の候に...

一 春暮の候に...

一 春暮の候に...

一 春暮の候に...

一 春暮の候に...

一 春暮の候に...

一 春暮の候に...

一 春暮の候に...

一 春暮の候に...

一 春暮の候に...

一 春暮の候に...

一 春暮の候に...

一 春暮の候に...



Handwritten text in a cursive script, likely a diary or journal entry. The text is written on aged, slightly stained paper. The script is dense and fills most of the page. There are some faint markings and bleed-through from the reverse side of the page. The text appears to be a personal account or record of events.

十月

一、本、十月、十日、... (Main body of handwritten text, including the date 'October 10th')  
二、... (Second line of text)  
三、... (Third line of text)  
四、... (Fourth line of text)  
五、... (Fifth line of text)  
六、... (Sixth line of text)  
七、... (Seventh line of text)  
八、... (Eighth line of text)  
九、... (Ninth line of text)  
十、... (Tenth line of text)



女に善くは女中事こころとせしむるは善くはカテ下  
ちと申すは女中事こころとせしむるは善くはカテ下  
は善くは女中事こころとせしむるは善くはカテ下  
カテ下

一井寺書彦、多心と成る者、多心と成る者、  
一井寺書彦、多心と成る者、多心と成る者、  
一井寺書彦、多心と成る者、多心と成る者、  
一井寺書彦、多心と成る者、多心と成る者、  
一井寺書彦、多心と成る者、多心と成る者、

一井寺書彦、多心と成る者、多心と成る者、  
一井寺書彦、多心と成る者、多心と成る者、  
一井寺書彦、多心と成る者、多心と成る者、  
一井寺書彦、多心と成る者、多心と成る者、  
一井寺書彦、多心と成る者、多心と成る者、

一井寺書彦、多心と成る者、多心と成る者、  
一井寺書彦、多心と成る者、多心と成る者、  
一井寺書彦、多心と成る者、多心と成る者、  
一井寺書彦、多心と成る者、多心と成る者、  
一井寺書彦、多心と成る者、多心と成る者、



一 毎度同者春音丸能種屋下  
一 毎度同者春音丸能種屋下

十一月

一 長安在りり宿。十日の子のりり宿。二日  
一 長安在りり宿。十日の子のりり宿。二日

一 長安在りり宿。十日の子のりり宿。二日  
一 長安在りり宿。十日の子のりり宿。二日

十二月

一 長安在りり宿。十日の子のりり宿。二日  
一 長安在りり宿。十日の子のりり宿。二日  
一 長安在りり宿。十日の子のりり宿。二日  
一 長安在りり宿。十日の子のりり宿。二日  
一 長安在りり宿。十日の子のりり宿。二日  
一 長安在りり宿。十日の子のりり宿。二日  
一 長安在りり宿。十日の子のりり宿。二日  
一 長安在りり宿。十日の子のりり宿。二日  
一 長安在りり宿。十日の子のりり宿。二日  
一 長安在りり宿。十日の子のりり宿。二日







Faint, illegible handwritten text in a cursive script, likely a historical document or letter. The text is written in dark ink on aged, yellowish paper. The script is dense and fills most of the page, with some larger characters that may be titles or section markers. The paper shows signs of wear, including creases and discoloration.

新



茶山 年終

多 年 終

盛年

*[Faint, illegible handwritten text, possibly bleed-through from the reverse side]*



三

夏冬  
四

身相  
五

山下  
六

身名  
七

身  
八

身  
九

身  
十

身  
十一

身  
十二

身

身  
十三



Handwritten text in a cursive script, likely a letter or document fragment.

Small vertical characters, possibly a date or reference number.

Large, bold handwritten characters, possibly a signature or title.

Large, bold handwritten characters, possibly a signature or title.

Large, bold handwritten characters, possibly a signature or title.

Large, bold handwritten characters, possibly a signature or title.

Large, bold handwritten characters, possibly a signature or title.

Large, bold handwritten characters, possibly a signature or title.

Large, bold handwritten characters, possibly a signature or title.

Small vertical characters, possibly a date or reference number.



Large, bold handwritten characters, possibly a signature or title.

Large, bold handwritten characters, possibly a signature or title.







Handwritten text in a cursive script, possibly a form of shorthand or a specific dialect. The text is written on a narrow strip of paper and includes several lines of characters. The first line is partially obscured by a red mark. The script is dense and difficult to decipher without a key.



Handwritten Japanese text in cursive style (sōsho), consisting of approximately 15 vertical columns of characters. The text is densely packed and spans across two pages of aged paper. The characters are written in black ink, with some variations in stroke thickness and fluid connections between characters, characteristic of the cursive style. The paper shows signs of age, including some staining and irregular edges.



Handwritten text at the top right of the page, possibly a title or header.

Handwritten text in the upper right section, appearing to be a list or a series of notes.

Handwritten text in the middle right section, continuing the list or notes.

Handwritten text in the lower right section, possibly a signature or a specific entry.

Handwritten text in the lower middle section, continuing the list or notes.

Handwritten text in the lower left section, continuing the list or notes.

Handwritten text in the middle left section, continuing the list or notes.

Handwritten text in the lower left section, continuing the list or notes.

Large handwritten characters, possibly a signature or a specific title, located in the lower left quadrant.

Handwritten text in the middle left section, continuing the list or notes.

Large handwritten characters, possibly a signature or a specific title, located in the middle left quadrant.

Large handwritten characters, possibly a signature or a specific title, located in the lower left quadrant.



Handwritten text in a cursive script, likely a historical document or letter, written on a strip of aged paper. The text is oriented vertically and appears to be in a historical form of Japanese or Chinese characters.

71 向



Amesbury

1776

Amesbury, New Hampshire  
Dear Mother  
I received your kind letter of the 10th and was  
glad to hear from you and to hear that you were  
well. I am well at present and hope these few  
lines will find you the same.

Amesbury  
New Hampshire

1776

Dear Mother  
I received your kind letter of the 10th and was  
glad to hear from you and to hear that you were  
well. I am well at present and hope these few  
lines will find you the same.

I am well at present and hope these few  
lines will find you the same.

Dear Mother  
I received your kind letter of the 10th and was  
glad to hear from you and to hear that you were  
well. I am well at present and hope these few  
lines will find you the same.



Handwritten text in a cursive script, likely a historical document or letter. The text is written in a dark ink on aged, slightly yellowed paper. It consists of several lines of text, with some characters appearing to be in a different script or dialect than the main body of text. The handwriting is fluid and somewhat slanted.

Handwritten text in a cursive script, continuing from the previous page. The text is written in a dark ink on aged, slightly yellowed paper. It consists of several lines of text, with some characters appearing to be in a different script or dialect than the main body of text. The handwriting is fluid and somewhat slanted.

Handwritten text at the bottom of the page, possibly a signature or a date. The text is written in a dark ink on aged, slightly yellowed paper. It consists of a few lines of text, with some characters appearing to be in a different script or dialect than the main body of text. The handwriting is fluid and somewhat slanted.



Handwritten notes at the top of the page, including the number '14' and some illegible characters.

1. 1877年10月... (Date and other illegible text)

Handwritten notes in the upper right section.

Main body of handwritten text on the right page, consisting of several lines of cursive script.

1. 1877年10月... (Date and other illegible text)

Main body of handwritten text on the left page, consisting of several lines of cursive script.

Handwritten notes at the bottom of the left page, including the number '14' and some illegible characters.



Handwritten text on a vertical strip of paper, likely a fragment of a document. The characters are in a cursive style, possibly representing a name or a specific phrase.

Handwritten text on a vertical strip of paper, likely a fragment of a document. The characters are in a cursive style, possibly representing a name or a specific phrase.



Handwritten Japanese text in cursive style (sōsho), arranged in vertical columns. The text is dense and highly stylized, typical of historical Japanese calligraphy. The characters are dark ink on aged, slightly yellowed paper. The writing flows from right to left across the page.



Handwritten marginal notes on the right edge of the page.

うしつて

申あり

を

まじり

まじり

まじり

まじり

まじり

まじり

まじり

まじり

まじり

まじり

まじり

まじり

まじり



Handwritten text in a cursive script, likely a historical document or letter. The text is written in a dense, flowing style across multiple lines. The paper shows signs of age, including discoloration and some damage at the edges.



Handwritten text in a cursive script, likely a personal note or letter.

Handwritten text in a cursive script, continuing the previous line.

Handwritten text in a cursive script, possibly a signature or a specific name.

Handwritten text in a cursive script, appearing to be a date or a specific reference.

Handwritten text in a cursive script, possibly a signature or a specific name.

Handwritten text in a cursive script, possibly a date or a specific reference.

Handwritten text in a cursive script, possibly a date or a specific reference.

Handwritten text in a cursive script, possibly a date or a specific reference.

Handwritten text in a cursive script, possibly a date or a specific reference.

Handwritten text in a cursive script, possibly a date or a specific reference.

Handwritten text in a cursive script, possibly a date or a specific reference.



Handwritten notes at the top of the page, possibly a title or header, including the characters "大正" (Taisho).

第一 關於... (Section 1: Regarding...)

第二 關於... (Section 2: Regarding...)

第三 關於... (Section 3: Regarding...)

第四 關於... (Section 4: Regarding...)

第五 關於... (Section 5: Regarding...)

第六 關於... (Section 6: Regarding...)

第七 關於... (Section 7: Regarding...)

第八 關於... (Section 8: Regarding...)

第九 關於... (Section 9: Regarding...)

第十 關於... (Section 10: Regarding...)

第十一 關於... (Section 11: Regarding...)



Handwritten text at the top of the page, possibly a title or header, written in a cursive script.

Handwritten text in the upper section of the page, continuing the cursive script.

Handwritten text in the middle section of the page, featuring a large, bold character that appears to be '子' (Shi).

Handwritten text in the lower-middle section of the page, continuing the cursive script.

Handwritten text in the lower section of the page, continuing the cursive script.

Handwritten text in the lower section of the page, continuing the cursive script.

Handwritten text in the lower section of the page, continuing the cursive script.

Handwritten text in the lower section of the page, continuing the cursive script.

Handwritten text in the lower section of the page, continuing the cursive script.

Handwritten text at the bottom of the page, continuing the cursive script.



うらなひの如し

三平の如き

花の如き

花の如き

花の如き

花の如き

花の如き

花の如き

花の如き

花の如き

花の如き

花の如き

花の如き

花の如き

花の如き

花の如き

花の如き

花の如き

花の如き

花の如き

花の如き

花の如き

花の如き

花の如き

花の如き

花の如き

花の如き

花

花

花

花

花

花

花

花

花

花

花

花

花

花

花

花

花

花

花

花

花

花

花

花

花

花

花



うしゆ身しとささるやと

何事かと思ふに

巾着布よりしりしやんを添へて

ゆきりしとて是れ一むらじ布なり

手紙の裏に記すに

伊豆の山に下はるりしやん

と記すに

此の布は

糸の太さ

糸の長さ

糸の色

糸の質

糸の味

糸の香

糸の光

糸の影

糸の響

糸の韻

糸の調

糸の和

糸の風

糸の雨

糸の雪

糸の露

糸の霜

糸の雪

糸の霜



Handwritten Japanese text in cursive style (sōsho), written vertically on aged paper. The text is organized into several columns, with some characters appearing to be in a different script or dialect. The paper shows signs of wear, including foxing and some staining, particularly at the top and bottom edges.



とて得た入目あり

ゆふのりえりふの所と

ひのあまのふいふい

ゆの書印ありいそれ

ら年いふらりやけ

ら院いふらりやけ

ら院いふらりやけ

ら院いふらりやけ

ら院いふらりやけ

ら院いふらりやけ

ら院いふらりやけ

ら院いふらりやけ

ら院いふらりやけ

ら院いふらりやけ

ら院いふらりやけ

ら院いふらりやけ

ら院いふらりやけ

ら院いふらりやけ

ら院いふらりやけ

ら院いふらりやけ

ら院いふらりやけ

ら院いふらりやけ

ら院いふらりやけ

ら院いふらりやけ

ら院いふらりやけ

ら院いふらりやけ

五

七



Handwritten text at the top of the page, possibly a title or header.

Handwritten text in the upper right section of the page.

Handwritten text in the middle right section of the page.

Handwritten text in the lower right section of the page.

Handwritten text in the lower middle section of the page.

Handwritten text in the lower left section of the page.

Handwritten text in the bottom left section of the page.

Handwritten characters, possibly a signature or date.

Handwritten characters, possibly a signature or date.

Handwritten text in the middle left section of the page.

Handwritten text in the bottom left corner.

Handwritten text in the bottom left corner.

Handwritten text in the bottom left corner.



Handwritten text at the top of the page, possibly a header or title.

Handwritten text in the upper section of the page, consisting of several lines of cursive script.

Handwritten text in the middle section of the page, continuing the cursive script.

Handwritten text in the lower section of the page, continuing the cursive script.

Handwritten text in the lower section of the page, continuing the cursive script.

Handwritten text in the lower section of the page, continuing the cursive script.



中道に在りて  
是れ伊豆の山也

と云ふは  
此の山也

# 山名に在りて

一物と云ふ

山名に在りて

此の山名に在りて

此の山名に在りて

此の山名に在りて

此の山名に在りて

此の山名に在りて

此の山名に在りて

此の山名に在りて

此の山名に在りて

此の山名に在りて

此の山名に在りて

此の山名に在りて

此の山名に在りて

此の山名に在りて

山名に在りて

山名に在りて

山名に在りて

山名に在りて

山名に在りて

山名に在りて

山名に在りて

山名に在りて

山名に在りて

山名に在りて

山名に在りて

山名に在りて

山名に在りて

山名に在りて

山名に在りて

山名に在りて

山名に在りて

山名に在りて

山名に在りて

山名に在りて

山名に在りて



Handwritten Japanese text in cursive style (sōsho), consisting of approximately 15 vertical columns. The text is written on aged, yellowed paper with some staining and wear. The characters are fluid and connected, typical of the cursive style. The text appears to be a formal document or a letter, possibly related to a historical event or a specific administrative matter. The right side of the page shows some faint, less legible markings, possibly bleed-through from the reverse side or additional notes.



一 此の書は...

一 此の書は...

一 此の書は...

一 此の書は...

一 此の書は...

一 此の書は...

一 此の書は...

一 此の書は...

一 此の書は...







しほのり

紫 下

下

三

五

七

九

十一

十三

十五

十七

十九

二十一

二十三

二十五

二十七

二十九

三十一

三十三

三十五

三十七

三十九

下

三

五

七

九

十一

十三

十五

十七

十九

二十一

二十三

二十五

二十七

二十九

三十一

三十三

三十五

三十七

三十九



Handwritten text in the top right corner, possibly a title or header.

Handwritten text in the middle right section, continuing the document's content.

Handwritten text in the lower middle right section.

Handwritten text in the top left section, starting the main body of the document.

Handwritten text in the middle left section.

Handwritten text in the lower middle left section.

Handwritten text in the bottom left section.

Handwritten text in the bottom left section, continuing the main body.

Handwritten text in the bottom left section.

Handwritten text in the bottom left section.

Handwritten text in the bottom left section.

Handwritten text in the bottom left section.

Handwritten text in the bottom left section.

Handwritten text in the bottom left section.

Handwritten text in the bottom left section.



くしは伊集

一 万石の御

一 上なる御

一 御

以て

傷

は

持

乙

其

し

し

し

し

し

し

し

し

し

し

の

は

は

は

は

は

は

は

は

は



Handwritten text in a cursive script, likely a personal letter or document.

Handwritten text in a cursive script, likely a personal letter or document.

Handwritten text in a cursive script, likely a personal letter or document.

Handwritten text in a cursive script, likely a personal letter or document.

Handwritten text in a cursive script, likely a personal letter or document.

Handwritten text in a cursive script, likely a personal letter or document.

Handwritten text in a cursive script, likely a personal letter or document.

Handwritten text in a cursive script, likely a personal letter or document.

Handwritten text in a cursive script, likely a personal letter or document.

Handwritten text in a cursive script, likely a personal letter or document.

Handwritten text in a cursive script, likely a personal letter or document.

Handwritten text in a cursive script, likely a personal letter or document.

Handwritten text in a cursive script, likely a personal letter or document.

Handwritten text in a cursive script, likely a personal letter or document.

Handwritten text in a cursive script, likely a personal letter or document.

Handwritten text in a cursive script, likely a personal letter or document.

Handwritten text in a cursive script, likely a personal letter or document.

Handwritten text in a cursive script, likely a personal letter or document.

Handwritten text in a cursive script, likely a personal letter or document.

Handwritten text in a cursive script, likely a personal letter or document.

Handwritten text in a cursive script, likely a personal letter or document.

Handwritten text in a cursive script, likely a personal letter or document.

Handwritten text in a cursive script, likely a personal letter or document.



香子奉天とありし  
之を以て

香子(少子)元

之を以て

如く

如く

如く

如く

如く

如く

如く

如く

如く

如く

如く

如く

如く

如く

香子(少子)元

之を以て

如く

如く

如く

如く

如く

如く

如く

如く

如く

如く

如く

如く

如く

如く

如く



Handwritten text in a cursive script, likely a historical document or manuscript. The text is written vertically on a piece of aged paper. The characters are dense and difficult to decipher without specialized knowledge of the script. The document appears to be a list or a record of various items or events, with some lines starting with what might be names or titles. The paper shows signs of age, including discoloration and some wear at the edges.



Handwritten text in the top right corner, including the characters "江" and "向".

Handwritten text in the upper right section, including the characters "江" and "向".

Handwritten text in the upper middle section, including the characters "江" and "向".

Handwritten text in the middle right section, including the characters "江" and "向".

Handwritten text in the middle section, including the characters "江" and "向".

Handwritten text in the middle left section, including the characters "江" and "向".

Handwritten text in the lower middle section, including the characters "江" and "向".

Handwritten text in the lower middle section, including the characters "江" and "向".

Handwritten text in the lower middle section, including the characters "江" and "向".

Handwritten text in the lower middle section, including the characters "江" and "向".

Handwritten text in the lower middle section, including the characters "江" and "向".

Handwritten text in the lower middle section, including the characters "江" and "向".

Handwritten text in the lower middle section, including the characters "江" and "向".

Handwritten text in the bottom left corner, including the characters "江" and "向".



Handwritten text in cursive style, likely a letter or document. The text is dense and covers most of the upper half of the page. It begins with a vertical line of characters on the left side, followed by several columns of text.

Handwritten text in cursive style, continuing from the upper section. This section contains more dense text, with some characters appearing larger and more prominent than others. The text is arranged in vertical columns, typical of traditional Japanese calligraphy.



144  
145



Handwritten text in cursive Japanese style (sōsho), likely a letter or document fragment. The characters are dense and fluid, typical of the Edo or Meiji periods.

Handwritten text in cursive Japanese style (sōsho), continuing from the top section. The script is highly stylized and difficult to decipher without context.

Handwritten text in a more formal or semi-formal style, possibly a signature or a specific address. Includes characters like '御前' (Mae no).

Handwritten text in a more formal or semi-formal style, possibly a signature or a specific address. Includes characters like '御前' (Mae no).



後

廿一

廿二

何れも空しく終るる事なり  
も其れを以て其れを以て其れを以て

其れを以て其れを以て其れを以て

其れを以て其れを以て其れを以て

其れを以て其れを以て其れを以て

其れを以て其れを以て其れを以て

其れを以て其れを以て其れを以て

其れを以て其れを以て其れを以て

其れを以て其れを以て其れを以て

其れを以て其れを以て其れを以て

其れを以て其れを以て其れを以て

其れを以て其れを以て其れを以て

其れを以て其れを以て其れを以て

其れを以て其れを以て其れを以て

其れを以て其れを以て其れを以て



一 布 表 表 表

布 表 表 表

布 表 表 表

一 布 表 表 表

布 表 表 表

布 表 表 表

布 表 表 表

一 布 表 表 表

布 表 表 表

布 表 表 表

布 表 表 表

布 表 表 表

一 布 表 表 表

布 表 表 表

一 布 表 表 表

布 表 表 表

布 表 表 表

布 表 表 表

布 表 表 表

布 表 表 表

布 表 表 表

布 表 表 表

布 表 表 表

布 表 表 表

布 表 表 表

布 表 表 表

布 表 表 表

布 表 表 表

布 表 表 表

布 表 表 表

布 表 表 表

布 表 表 表

布 表 表 表

布 表 表 表

布 表 表 表



しんせうしんせう

きんせうしんせう

くわんせうしんせう

くわんせうしんせう

くわんせうしんせう

くわんせうしんせう

くわんせうしんせう

くわんせうしんせう

くわんせうしんせう

くわんせうしんせう

くわんせうしんせう

くわんせうしんせう

くわんせうしんせう

くわんせうしんせう

くわんせうしんせう

くわんせうしんせう

くわんせうしんせう

くわんせうしんせう

くわんせうしんせう

くわんせうしんせう

くわんせうしんせう

しんせうしんせう

きんせうしんせう

くわんせうしんせう

くわんせうしんせう

くわんせうしんせう

くわんせうしんせう

くわんせうしんせう

くわんせうしんせう

くわんせうしんせう

くわんせうしんせう

くわんせうしんせう

くわんせうしんせう

くわんせうしんせう

くわんせうしんせう

くわんせうしんせう

くわんせうしんせう

くわんせうしんせう

くわんせうしんせう

くわんせうしんせう

くわんせうしんせう

くわんせうしんせう



二番目

一 物位痛

物位痛は物位痛の(物位痛)  
物位痛は物位痛の(物位痛)  
物位痛は物位痛の(物位痛)

一 養育

物位

一 養育

養育は養育の(養育)

一 養育

養育は養育の(養育)

2. 養育

一 養育

養育

一 養育

養育

一 養育

養育

養育  
養育



1. 新在阿比西尼亞  
 2. 新在阿比西尼亞  
 3. 新在阿比西尼亞  
 4. 新在阿比西尼亞

5. 新在阿比西尼亞  
 6. 新在阿比西尼亞

7. 新在阿比西尼亞  
 8. 新在阿比西尼亞

9. 新在阿比西尼亞  
 10. 新在阿比西尼亞

11. 新在阿比西尼亞  
 12. 新在阿比西尼亞

13. 新在阿比西尼亞  
 14. 新在阿比西尼亞

15. 新在阿比西尼亞  
 16. 新在阿比西尼亞

17. 新在阿比西尼亞  
 18. 新在阿比西尼亞

19. 新在阿比西尼亞  
 20. 新在阿比西尼亞

21. 新在阿比西尼亞  
 22. 新在阿比西尼亞

23. 新在阿比西尼亞  
 24. 新在阿比西尼亞

25. 新在阿比西尼亞  
 26. 新在阿比西尼亞

27. 新在阿比西尼亞  
 28. 新在阿比西尼亞

29. 新在阿比西尼亞  
 30. 新在阿比西尼亞

31. 新在阿比西尼亞  
 32. 新在阿比西尼亞

33. 新在阿比西尼亞  
 34. 新在阿比西尼亞



Handwritten text in a cursive script, likely a list or account, starting with a vertical line on the left.

Handwritten text in a cursive script, continuing the list or account.

Handwritten text in a cursive script, continuing the list or account.

Handwritten text in a cursive script, continuing the list or account.

Handwritten text in a cursive script, continuing the list or account.

Handwritten text in a cursive script, continuing the list or account.

Handwritten text in a cursive script, continuing the list or account.

Handwritten text in a cursive script, continuing the list or account.

Handwritten text in a cursive script, continuing the list or account.

Handwritten text in a cursive script, continuing the list or account.

Handwritten text in a cursive script, continuing the list or account.

Handwritten text in a cursive script, continuing the list or account.



Handwritten mark or signature at the top right corner.

1. 諸君の御覧に當りては...  
1. 諸君の御覧に當りては...  
諸君の御覧に當りては...  
諸君の御覧に當りては...  
諸君の御覧に當りては...

右行西

諸君の御覧に當りては...  
諸君の御覧に當りては...

諸君の御覧に當りては...  
諸君の御覧に當りては...

諸君の御覧に當りては...  
諸君の御覧に當りては...

諸君の御覧に當りては...  
諸君の御覧に當りては...

諸君の御覧に當りては...  
諸君の御覧に當りては...

諸君の御覧に當りては...  
諸君の御覧に當りては...

諸君の御覧に當りては...  
諸君の御覧に當りては...

諸君の御覧に當りては...  
諸君の御覧に當りては...

諸君の御覧に當りては...  
諸君の御覧に當りては...



Handwritten text in the top right corner, possibly a title or header.

Handwritten text in the upper right section, partially enclosed by a grid.

Main body of handwritten text, organized into a grid structure with multiple columns and rows.

Large, bold handwritten characters, possibly serving as a section separator or title.

Handwritten text in the lower right section, continuing the main body of the document.

Handwritten text in the lower middle section, continuing the main body of the document.

Handwritten text in the lower left section, continuing the main body of the document.

Handwritten text in the lower left section, continuing the main body of the document.

Handwritten text in the lower left section, continuing the main body of the document.

Handwritten text in the bottom left corner, possibly a signature or date.



Handwritten text in a cursive script, likely a historical document or manuscript. The text is arranged in several columns and includes various characters and symbols, possibly representing a list or a detailed record. The script is dense and fills most of the page.



1. ~~Handwritten text~~ ... ~~Handwritten text~~ ...

Handwritten text in cursive script, possibly a list or notes.

Handwritten text, appearing as a distinct line or section.

Handwritten text, continuing the list or notes.

Handwritten text, possibly a sub-section or heading.

Handwritten text, continuing the list or notes.

Handwritten text, possibly a sub-section or heading.

Handwritten text, continuing the list or notes.

Handwritten text, continuing the list or notes.

Handwritten text, continuing the list or notes.

Handwritten text, continuing the list or notes.

Handwritten text, continuing the list or notes.

Handwritten text, continuing the list or notes.

Handwritten text, continuing the list or notes.

Handwritten text, continuing the list or notes.



Handwritten text in a cursive script, likely a list or index.

目録 (Index)

Handwritten entries, possibly names or titles.

Handwritten entries, possibly names or titles.

Handwritten entries, possibly names or titles.

Handwritten entries, possibly names or titles.

Handwritten entries, possibly names or titles.

Handwritten entries, possibly names or titles.

Handwritten entries, possibly names or titles.

Handwritten entries, possibly names or titles.

Handwritten entries, possibly names or titles.



Handwritten Japanese text in cursive style (sōsho), likely a letter or document. The text is written vertically on aged paper. The characters are dense and fluid, characteristic of the cursive script. The paper shows signs of wear, including foxing and some staining, particularly at the bottom edge.

14







江ノ内(陸奥)

陸奥

陸奥の地味は、

陸奥の地味は、

陸奥の地味は、

陸奥の地味は、

陸奥の地味は、

陸奥の地味は、

陸奥の地味は、

陸奥の地味は、

陸奥の地味は、

陸奥の地味は、

陸奥の地味は、

陸奥の地味は、

陸奥の地味は、

陸奥の地味は、

陸奥の地味は、

陸奥の地味は、

陸奥の地味は、

陸奥の地味は、

陸奥の地味は、

陸奥の地味は、



Handwritten text in a cursive script, likely a letter or document. The text is written on aged, yellowed paper and is mostly illegible due to the cursive style and fading. It appears to be a personal or official communication.

Handwritten text in a cursive script, continuing from the previous page. The text is written on aged, yellowed paper and is mostly illegible due to the cursive style and fading. It appears to be a personal or official communication.



Handwritten Japanese text in cursive (sōsho) style, arranged in vertical columns. The text is dense and highly stylized, typical of historical Japanese calligraphy. The paper shows signs of age and wear, with some staining and a central fold.



Handwritten Japanese text in cursive style (sōsho), arranged in vertical columns. The text is dense and appears to be a continuous passage, possibly a letter or a record. The ink is dark, and the paper shows signs of age and wear.



1. 諸君之... 諸君之... 諸君之...

諸君之... 諸君之... 諸君之...

諸君之... 諸君之... 諸君之...

諸君之... 諸君之... 諸君之...

諸君之... 諸君之... 諸君之...

諸君之... 諸君之... 諸君之...

諸君之... 諸君之... 諸君之...

諸君之... 諸君之... 諸君之...

諸君之... 諸君之... 諸君之...

諸君之... 諸君之... 諸君之...

諸君之... 諸君之... 諸君之...

諸君之... 諸君之... 諸君之...

諸君之... 諸君之... 諸君之...

諸君之... 諸君之... 諸君之...







花 草のあ

あつたてのあつたて

あつたてのあつたて

あつたてのあつたて

あつたてのあつたて

あつたてのあつたて

あつたてのあつたて

あつたてのあつたて

あつたてのあつたて

あつたてのあつたて

あつたてのあつたて

あつたてのあつたて

あつたてのあつたて

あつたてのあつたて

あつたてのあつたて

あつたてのあつたて

あつたてのあつたて

あつたてのあつたて

あつたてのあつたて

あつたてのあつたて

一

あつたてのあつたて

あつたてのあつたて

あつたてのあつたて

あつたてのあつたて

あつたてのあつたて

あつたてのあつたて

あつたてのあつたて

あつたてのあつたて

あつたてのあつたて

あつたてのあつたて

あつたてのあつたて

あつたてのあつたて

あつたてのあつたて

あつたてのあつたて

あつたてのあつたて

あつたてのあつたて

あつたてのあつたて

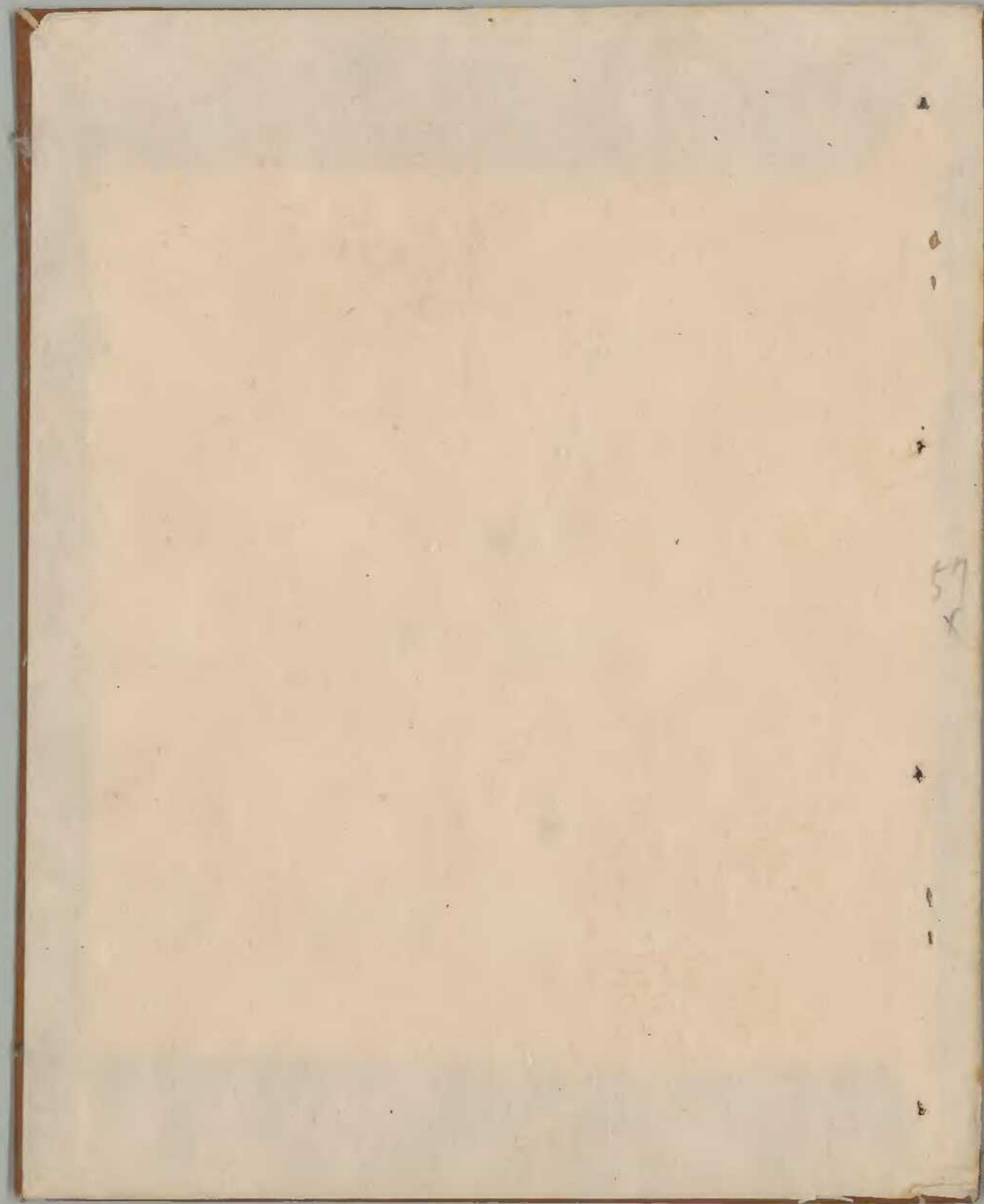
あつたてのあつたて

あつたてのあつたて

あつたてのあつたて

あつたてのあつたて





57  
x



