

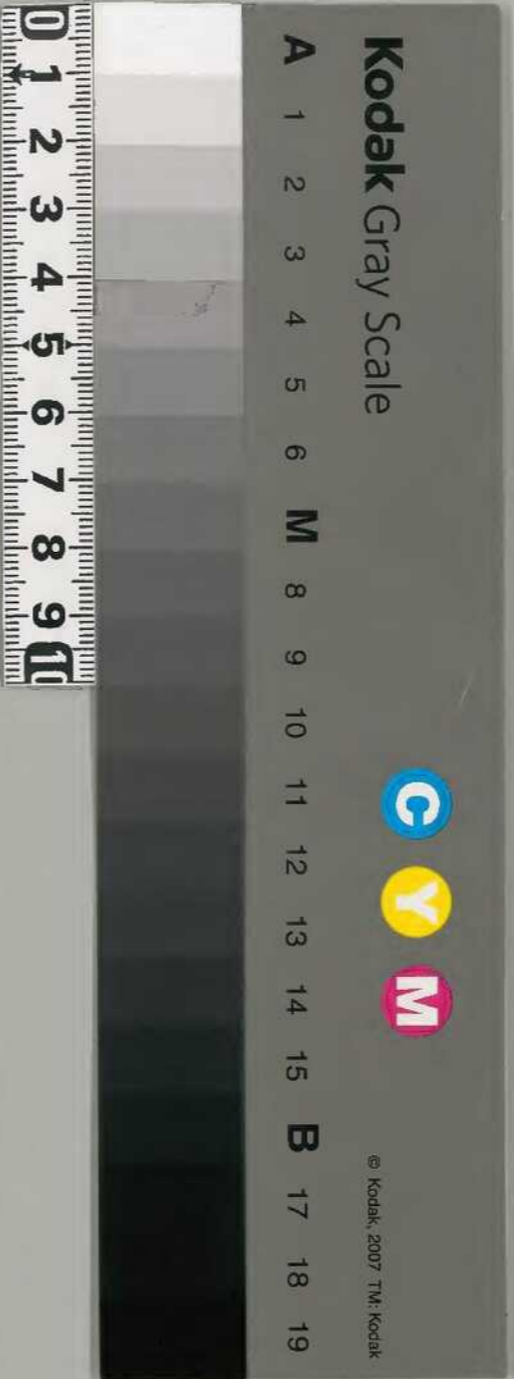
尋憲記 十二止

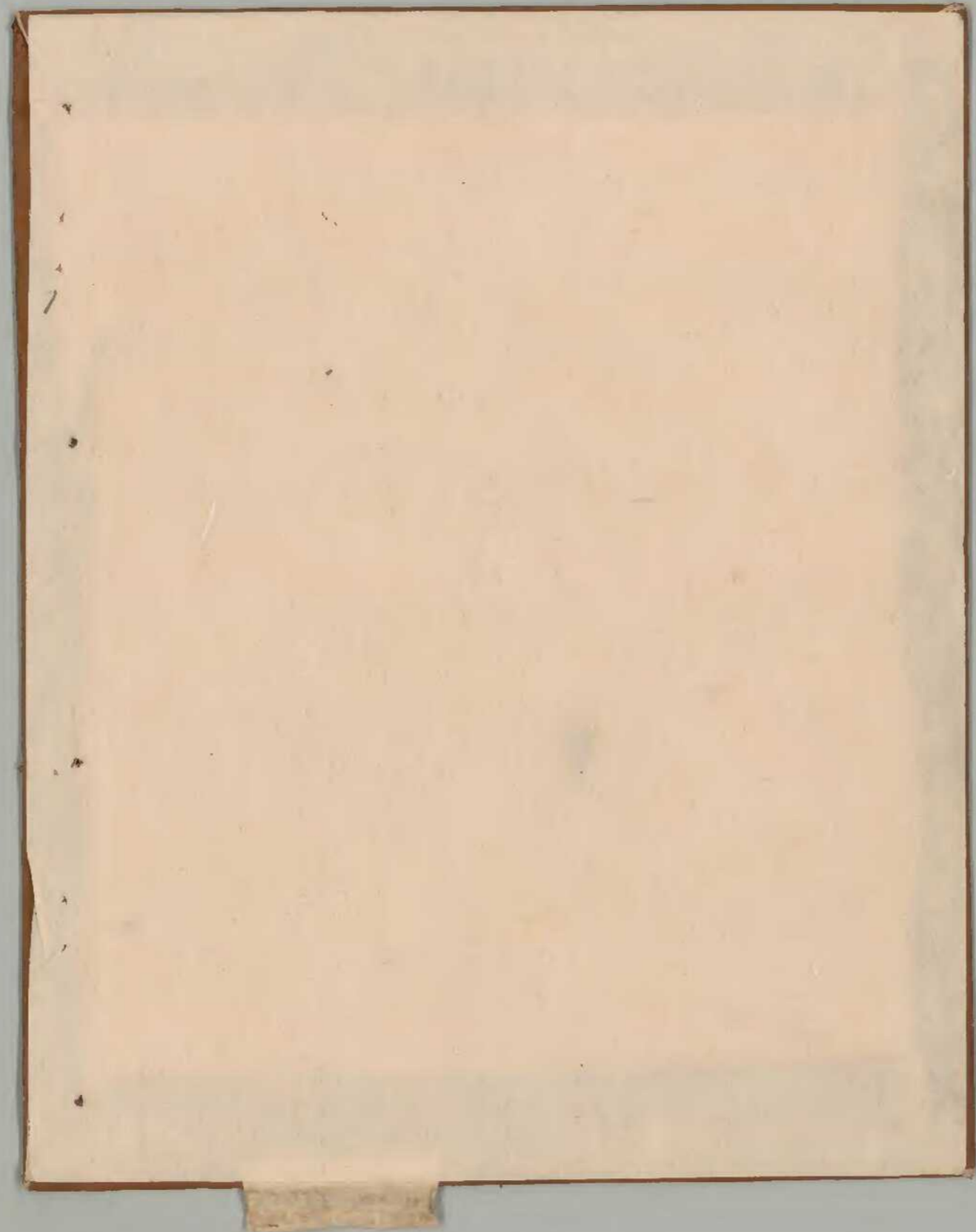
庫文閣内			
大田			和
函			書
架	冊	號	類

内閣文庫			
番號	和	20931	
冊數	12 (12)		
函號	古	22	366

書文古	二二
	函共二
三六六號	三

尋憲記 十二止





天正五年

丁酉七月

吳士一

大會方卷日記

卷一

大森院

...



...

...

...

...

Handwritten text in cursive script, top line of the right page.

Handwritten text in cursive script, middle line of the right page.

Handwritten text in cursive script, bottom line of the right page.

Handwritten text in cursive script, top line of the left page.

Handwritten text in cursive script, middle line of the left page.

Handwritten vertical text on the left page, possibly a signature or name.

Handwritten vertical text on the left page, possibly a signature or name.

Handwritten vertical text on the left page, possibly a signature or name.



Handwritten text, possibly a name or title, in cursive script.

Handwritten text, possibly a name or title, in cursive script.

Handwritten text, possibly a name or title, in cursive script.

Handwritten text, possibly a name or title, in cursive script.

Handwritten text, possibly a name or title, in cursive script.

Handwritten text, possibly a name or title, in cursive script.

Handwritten text, possibly a name or title, in cursive script.

Handwritten text, possibly a name or title, in cursive script.

天正五年丁酉七月日

寺

當年維摩會講師可有物行儀

老日記

一信長上洛付令上洛大會後未始末

洞付白用念事法不入月六方



五石

信長書白布并衣束物白布以下分給分

銀子

是書於上洛用信長行時所取物書信三又月

為自九貫文

是日書紙也

為同三貫文

是書於上洛用信長行時所取物書信三又月

或

是書於上洛用信長行時所取物書信三又月

八月

信長書白布并衣束物白布以下分給分

七年九月

是日書紙也

七年九月

是日書紙也

二年 白

果 白く木片あり

四斗 十ナリ 暫くは行てをいふ

五斗 十ナリ 暫くは行てをいふ
ワラ木一又君ちり居り多末もワラ木ワラ

六斗 十ナリ 暫くは行てをいふ
ワラ木一又君ちり居り多末もワラ木ワラ

七斗 十ナリ 暫くは行てをいふ
ワラ木一又君ちり居り多末もワラ木ワラ

八斗 十ナリ 暫くは行てをいふ
ワラ木一又君ちり居り多末もワラ木ワラ

九斗 十ナリ 暫くは行てをいふ
ワラ木一又君ちり居り多末もワラ木ワラ

十斗 十ナリ 暫くは行てをいふ
ワラ木一又君ちり居り多末もワラ木ワラ

十一斗 十ナリ 暫くは行てをいふ
ワラ木一又君ちり居り多末もワラ木ワラ

十二斗 十ナリ 暫くは行てをいふ
ワラ木一又君ちり居り多末もワラ木ワラ

十三斗 十ナリ 暫くは行てをいふ
ワラ木一又君ちり居り多末もワラ木ワラ

十四斗 十ナリ 暫くは行てをいふ
ワラ木一又君ちり居り多末もワラ木ワラ

十五斗 十ナリ 暫くは行てをいふ
ワラ木一又君ちり居り多末もワラ木ワラ

十六斗 十ナリ 暫くは行てをいふ
ワラ木一又君ちり居り多末もワラ木ワラ

十七斗 十ナリ 暫くは行てをいふ
ワラ木一又君ちり居り多末もワラ木ワラ

十八斗 十ナリ 暫くは行てをいふ
ワラ木一又君ちり居り多末もワラ木ワラ

十九斗 十ナリ 暫くは行てをいふ
ワラ木一又君ちり居り多末もワラ木ワラ

二十斗 十ナリ 暫くは行てをいふ
ワラ木一又君ちり居り多末もワラ木ワラ

カクシノ 四斗 洋子カニ 一斗 倉庫揚子 三斗 一斗 一斗

七年 先餅米 六斗 代ノ 米 餅 四斗 八斗

三斗 八斗 代ノ 米 餅 四斗 八斗

三斗 八斗 代ノ 米 餅 四斗 八斗

三斗 八斗 代ノ 米 餅 四斗 八斗

三斗 八斗 代ノ 米 餅 四斗 八斗

三斗 八斗 代ノ 米 餅 四斗 八斗

三斗 八斗 代ノ 米 餅 四斗 八斗

三斗 八斗 代ノ 米 餅 四斗 八斗

三斗 八斗 代ノ 米 餅 四斗 八斗

三斗 八斗 代ノ 米 餅 四斗 八斗

三斗 八斗 代ノ 米 餅 四斗 八斗

三斗 八斗 代ノ 米 餅 四斗 八斗

三斗 八斗 代ノ 米 餅 四斗 八斗

三斗 八斗 代ノ 米 餅 四斗 八斗

三斗 八斗 代ノ 米 餅 四斗 八斗

三斗 八斗 代ノ 米 餅 四斗 八斗

三斗 八斗 代ノ 米 餅 四斗 八斗

三斗 八斗 代ノ 米 餅 四斗 八斗

下中

中

上

六

七

八

九

十

十月日

三

四

五

六

七

八

10

そのまゝの二枚ケイ上等の紙に
本紙のこまをすく

こまをすくはるゝ紙に

一紙の紙にすくはるゝ紙に

紙の紙にすくはるゝ紙に

後田月 至九月晦日
紙を三十枚を七中一紙を四下上

春日の紙にすくはるゝ紙に

紙の紙にすくはるゝ紙に

そのまゝの紙にすくはるゝ紙に

紙の紙にすくはるゝ紙に

紙の紙にすくはるゝ紙に

紙の紙にすくはるゝ紙に

紙の紙にすくはるゝ紙に

紙の紙にすくはるゝ紙に

新中書

新中書... 新中書... 新中書...

新中書

新中書... 新中書... 新中書...

新中書

新中書... 新中書... 新中書...

新中書

新中書... 新中書... 新中書...

新中書

新中書... 新中書... 新中書...

新中書

新中書... 新中書... 新中書...

新中書

新中書... 新中書... 新中書...

新中書

新中書... 新中書... 新中書...

新中書

新中書... 新中書... 新中書...

右の如く申すに... 15

一、金... 二、銀... 三、銅...

八、牛... 九、馬...

一、牛... 二、馬...

三、牛... 四、馬...

五、牛... 六、馬...

七、牛... 八、馬...

九、牛... 一〇、馬...

二、牛... 三、馬...

四、牛... 五、馬...

六、牛... 七、馬...

八、牛... 九、馬...

一〇、牛... 一一、馬...

一、牛... 二、馬...

三、牛... 四、馬...

五、牛... 六、馬...

七、牛... 八、馬...

九、牛... 一〇、馬...

一、牛... 二、馬...

三、牛... 四、馬...

五、牛... 六、馬...

七、牛... 八、馬...

九、牛... 一〇、馬...

一一、牛... 一二、馬...

一三、牛... 一四、馬...

一五、牛... 一六、馬...

一七、牛... 一八、馬...

一、牛... 二、馬...

三、牛... 四、馬...

五、牛... 六、馬...

七、牛... 八、馬...

九、牛... 一〇、馬...

一一、牛... 一二、馬...

一三、牛... 一四、馬...

一五、牛... 一六、馬...

一七、牛... 一八、馬...

ト...

甲 奉

三ノ若木五斗

甲 奉

白簀

甲 奉

三ノ若木之取 三斗

甲 奉

酒各三斗

甲 奉

酒四斗

甲 奉

山ノ下

甲 奉

白簀

甲 奉

馬若門

甲 奉

キウタ

甲 奉

キウタ

甲 奉

キウタ

甲 奉

十七日 酒 三斗 奉

甲 奉

奉

甲 奉

奉

甲 奉

奉

甲 奉

奉

甲 奉

奉

甲 奉

奉

甲 奉

奉

甲 奉

奉

甲 奉

奉

甲 奉

奉

甲 奉

十八日 酒 奉

甲 奉

奉

甲 奉

奉

甲 奉

奉

甲 奉

奉

甲 奉

奉

五斗

四斗

三斗

二斗

一斗

八斗

七斗

六斗

五斗

四斗

三斗

二斗

一斗

五斗

四斗

五斗

四斗

三斗

二斗

一斗

朱砂

酒

八斗

五斗

白著木

毛干

中

分

将

是

新中納言

三〇 一七

甲申年

尾一

甲申年

尾二

甲申年

尾三

甲申年

日

甲申年

酒

甲申年

尾四

甲申年

尾五

甲申年

尾六

甲申年

尾七

甲申年

尾八

甲申年

尾九

甲申年

尾十

甲申年

尾十一

甲申年

尾十二

甲申年

尾十三

甲申年

尾十四

甲申年

尾十五

甲申年

尾十六

甲申年

尾十七

甲申年

尾十八

甲申年

尾十九

甲申年

尾二十

甲申年

尾二十一

甲申年

尾二十二

甲申年

尾二十三

甲申年

尾二十四

甲申年

尾二十五

甲申年

尾二十六

新撰

尾谷口井敷

月十四日

月十二日

月十三日

月十四日

月十五日

月十六日

月十七日

月十八日

月十九日

月二十日

月二十一日

月二十二日

月二十三日

月二十四日

月二十五日

月二十六日

月二十七日

月二十八日

月二十九日

月三十日

尾谷口井敷

月十四日

月十二日

月十三日

月十四日

月十五日

月十六日

月十七日

月十八日

月十九日

月二十日

月二十一日

月二十二日

月二十三日

月二十四日

月二十五日

月二十六日

月二十七日

月二十八日

月二十九日

月三十日

尾谷口井敷

月十四日

月十二日

月十三日

月十四日

月十五日

月十六日

月十七日

月十八日

月十九日

月二十日

月二十一日

月二十二日

月二十三日

月二十四日

月二十五日

月二十六日

月二十七日

月二十八日

月二十九日

月三十日

尾谷口井敷

月十四日

月十二日

月十三日

月十四日

月十五日

月十六日

月十七日

月十八日

月十九日

月二十日

月二十一日

月二十二日

月二十三日

月二十四日

月二十五日

月二十六日

月二十七日

月二十八日

月二十九日

月三十日

却中七五五冬 中元月

却中七五五冬 常四之午 運苑乃川

却中七五五冬 中元月

却中七五五冬 三ノし 運苑乃川 無乃乃 中元月

却中七五五冬 中元月

却中七五五冬 中元月

却中七五五冬 中元月
却中七五五冬 中元月
却中七五五冬 中元月
却中七五五冬 中元月
却中七五五冬 中元月

W. C. Jones

184

W. C. Jones

W. C. Jones

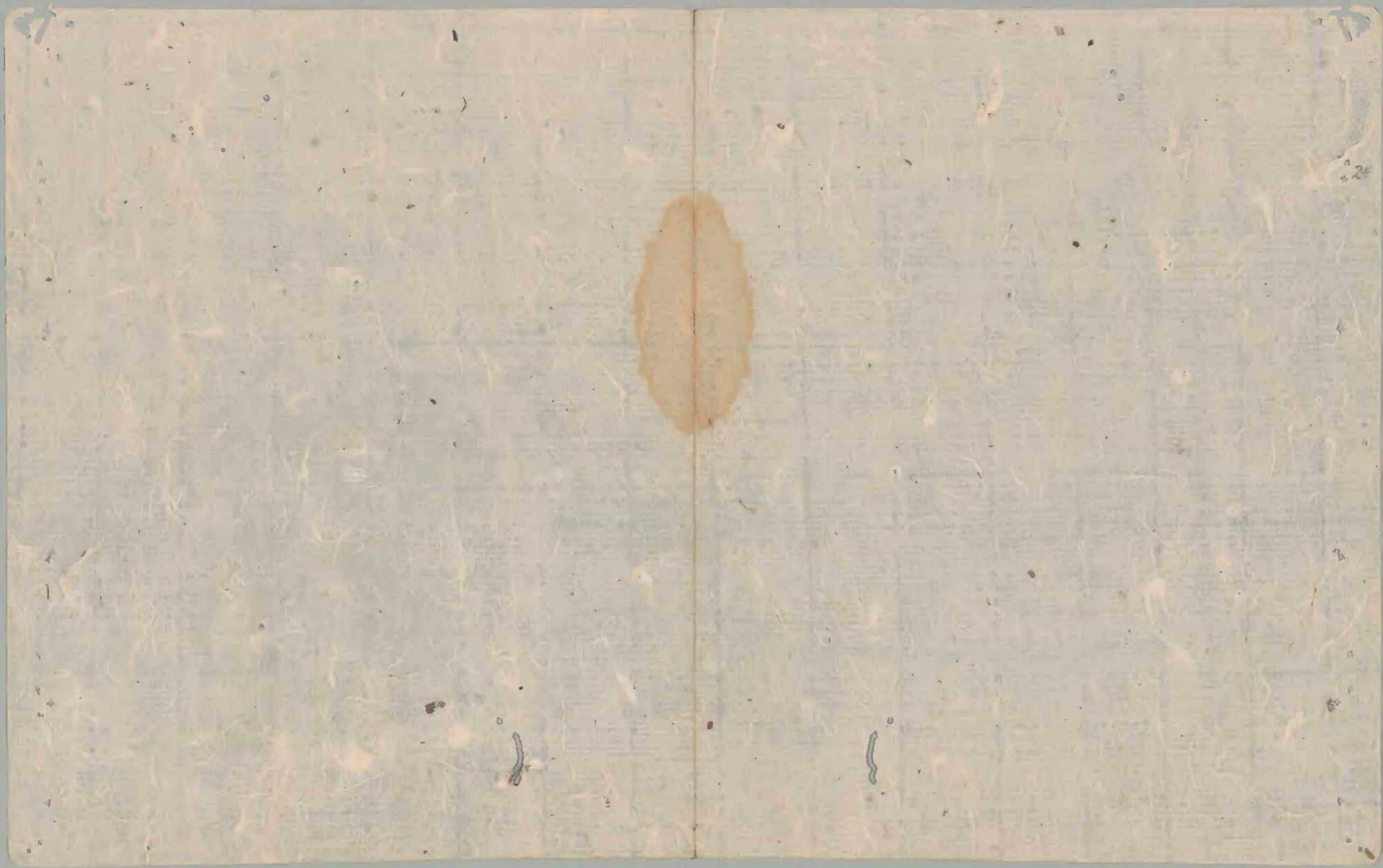
W. C. Jones

W. C. Jones

W. C. Jones

W. C. Jones

W. C. Jones



Handwritten text in a cursive script, possibly a list or account. The text is written on a single sheet of paper with a vertical crease down the center. The characters are dark and somewhat faded, with some ink bleed-through from the reverse side. The text is arranged in several lines, with some words appearing to be repeated or related. The script is highly stylized and difficult to decipher without a key.

白丸

Handwritten text on the left edge of the page, possibly a date or a reference number.

Handwritten text in cursive script, possibly a signature or name.

Handwritten text in cursive script, possibly a name or title.

Handwritten text in cursive script, possibly a name or title.

Handwritten text in cursive script, possibly a name or title.

Handwritten text in cursive script, possibly a name or title.

Handwritten text in cursive script, possibly a name or title.

— my dear

—

1st of the 4th of the 18th

18th of the 18th

18th of the 18th

18th of the 18th

18th of the 18th

18th of the 18th

18th of the 18th

18th of the 18th

四
一
—
心
亦
美

信
及
飛
往
美
國
之
航
空

日
本
空
軍
之
飛
機

En - for . m.

Stephens m.

W. G. ...

W. G. ...

W. G. ...

W. G. ...

W. G. ...

W. G. ...

Handwritten text, possibly a signature or name.

Handwritten text, possibly a name or title.

Handwritten text, possibly a name or title.

Handwritten text, possibly a name or title.

Handwritten text, possibly a name or title.

Handwritten text, possibly a name or title.

Handwritten text, possibly a name or title.

Handwritten text, possibly a name or title.

Handwritten text, possibly a name or title.

Handwritten text, possibly a name or title.

112

Washington

Washington

Washington

Washington

Washington

Washington

Washington

Washington

Washington

Washington

Washington

Washington

Handwritten text, possibly a name or title, written in cursive.

Small handwritten mark or signature at the bottom right.

Handwritten text, possibly a name or title, written in cursive.

Handwritten text, possibly a name or title, written in cursive.

Handwritten text, possibly a name or title, written in cursive.

Handwritten text, possibly a name or title, written in cursive.

Handwritten text, possibly a name or title, written in cursive.

Handwritten text, possibly a name or title, written in cursive.

Handwritten text, possibly a name or title, written in cursive.

Small handwritten mark or signature at the bottom left.

1871
 1872
 1873
 1874
 1875
 1876
 1877
 1878
 1879
 1880
 1881
 1882
 1883
 1884
 1885
 1886
 1887
 1888
 1889
 1890
 1891
 1892
 1893
 1894
 1895
 1896
 1897
 1898
 1899
 1900

1871
 1872
 1873
 1874
 1875
 1876
 1877
 1878
 1879
 1880
 1881
 1882
 1883
 1884
 1885
 1886
 1887
 1888
 1889
 1890
 1891
 1892
 1893
 1894
 1895
 1896
 1897
 1898
 1899
 1900

25
IN THE
M

at ~~the~~ ~~the~~

to the ~~the~~ ~~the~~

the ~~the~~ ~~the~~

the ~~the~~ ~~the~~

the ~~the~~ ~~the~~

the ~~the~~ ~~the~~

the ~~the~~ ~~the~~

the ~~the~~ ~~the~~

1842
 1843
 1844
 1845
 1846
 1847
 1848
 1849
 1850
 1851
 1852
 1853
 1854
 1855
 1856
 1857
 1858
 1859
 1860
 1861
 1862
 1863
 1864
 1865
 1866
 1867
 1868
 1869
 1870
 1871
 1872
 1873
 1874
 1875
 1876
 1877
 1878
 1879
 1880
 1881
 1882
 1883
 1884
 1885
 1886
 1887
 1888
 1889
 1890
 1891
 1892
 1893
 1894
 1895
 1896
 1897
 1898
 1899
 1900

[Faint handwritten marks]

18/10

[Faint handwritten text]

[Faint handwritten text]

[Faint handwritten text]

[Faint handwritten text]

Handwritten text in cursive script, likely a signature or name.

Handwritten text in cursive script, possibly a date or a short phrase.

Handwritten text in cursive script, possibly a name or title.

Handwritten text in cursive script, possibly a name or title.

Handwritten text in cursive script, possibly a name or title.

Handwritten text in cursive script, possibly a name or title.

Handwritten text in cursive script, possibly a name or title.

Handwritten text in cursive script, possibly a name or title.

Handwritten text in cursive script, possibly a name or title.

Handwritten text in cursive script, possibly a name or title.

Handwritten text in cursive script, possibly a name or title.

W. H. R. ...

... the ...

... the ...

... the ...

... the ...

... the ...

... the ...

Handwritten text in a cursive script, likely a list or account. The text is written on aged, yellowed paper. The words are difficult to decipher due to the cursive style and fading, but appear to include names and possibly dates or quantities.

Handwritten text in a cursive script, continuing from the top section. It appears to be a list of items or names, possibly related to the top section. The text is written on aged, yellowed paper.

七箇月

五ノ月

五ノ月

五ノ月

五ノ月

五ノ月

五ノ月

五ノ月

五ノ月

Handwritten text at the top of the page, possibly a header or title.

Main body of handwritten text on the top half of the page.

Handwritten text on the middle section of the page.

Handwritten text at the bottom of the page.

Handwritten text on the top half of the bottom page.

Main body of handwritten text on the bottom half of the bottom page.

Handwritten text in a cursive script, likely a historical document or manuscript. The text is written on aged, yellowed paper and is arranged in several lines across the page. The script is highly stylized and difficult to decipher. There are some large, bold characters that stand out, possibly indicating specific names or titles. The paper shows signs of wear, including a prominent stain in the center and some fading of the ink.

Handwritten text at the top of the page, possibly a header or title.

Handwritten text line 1.

Handwritten text line 2.

Handwritten text line 3.

Handwritten text line 4.

Handwritten text line 5.

Handwritten text line 6.

Handwritten text line 7.

Handwritten text line 8.

Handwritten text line 9.

Handwritten text line 10.

Handwritten text line 11.

Handwritten text line 12.

Handwritten text line 13.

Handwritten text line 14.

Handwritten text line 15.

Handwritten text line 16.

Handwritten text line 17.

Handwritten text line 18.

Handwritten text line 19.

Handwritten text line 20.

Handwritten text line 21.

Handwritten text line 22.

Handwritten text line 23.

Handwritten text line 24.

Handwritten text line 25.

Handwritten text line 26.

Handwritten text line 27.

Handwritten text line 28.

Handwritten text line 29.

Handwritten text line 30.

Handwritten text line 31.

Handwritten text line 32.

Handwritten text in a cursive script, possibly a list or notes.

Main body of handwritten text in a cursive script, consisting of several lines of notes.

Handwritten text at the bottom of the page, possibly a signature or a specific note.

Handwritten text in a cursive script, likely a historical document or manuscript. The text is written in dark ink on aged, yellowish paper. The script is dense and difficult to decipher, but appears to be a continuous passage of text. The ink is somewhat faded and the paper shows signs of wear and discoloration.

47

to the

the

the

1. The ...
 2. The ...
 3. The ...
 4. The ...

1. The ...

the ...

the ...

1. The ...

1. The ...

the ...

the ...

Handwritten text in a cursive script, likely a personal letter or diary entry.

Handwritten text in a cursive script, continuing the previous line.

Handwritten text in a cursive script, continuing the previous line.

Handwritten text in a cursive script, continuing the previous line.

Handwritten text in a cursive script, continuing the previous line.

Handwritten text in a cursive script, continuing the previous line.

Handwritten text in a cursive script, continuing the previous line.

Handwritten text in a cursive script, continuing the previous line.

Handwritten text in a cursive script, continuing the previous line.

Handwritten text in a cursive script, continuing the previous line.

Handwritten text in a cursive script, continuing the previous line.

Handwritten text in a cursive script, continuing the previous line.

Handwritten text in a cursive script, continuing the previous line.

Handwritten text in a cursive script, continuing the previous line.

Handwritten text in a cursive script, likely a historical document or manuscript. The text is written on aged, yellowed paper and appears to be a list or a series of entries. The characters are highly stylized and difficult to decipher without specialized knowledge of the script.

Handwritten text in a cursive script, continuing from the top page. The text is written on aged, yellowed paper and appears to be a list or a series of entries. The characters are highly stylized and difficult to decipher without specialized knowledge of the script.



Vertical handwritten text in seal script, possibly a title or address, including characters like '日本書院'.



紙數五拾壹枚

52

大正四年一月一日

大正四年一月一日

大正四年一月一日

大正四年一月一日

大正四年一月一日

大正四年一月一日

今者之世則以義裁如斯

又豈移者者是也

何也

今者入世之氣概徒

難之為

小泉

小泉

小泉

柳成文

張之象

王孫梅

柳成文

張之象

王孫梅

柳成文

張之象

Handwritten text in a cursive script, possibly representing a list or a set of instructions.

Handwritten text, including a large character that resembles '十' (ten).

Handwritten text, including a large character that resembles '二' (two).

Handwritten text, including a large character that resembles '女' (woman).

Handwritten text, including a large character that resembles '心' (heart/mind).

Handwritten text, including a large character that resembles 'X' or a similar symbol.

Handwritten text, including a large character that resembles '心' (heart/mind).

Handwritten text, including a large character that resembles '心' (heart/mind).

Handwritten text, including a large character that resembles '心' (heart/mind).

石谷庄の伝説を弁明す

康平中、高尾山、南河内

年、蘇山、雲江、別時、友

の、今、今、今、今、今、今

思、恐、假、候

御、公、命、下、上、下、上、下、上、下

御、公、命、下、上、下、上、下、上、下

御、公、命、下、上、下、上、下、上、下

御、公、命、下、上、下、上、下、上、下

御、公、命、下、上、下、上、下、上、下

御、公、命、下、上、下、上、下、上、下

御、公、命、下、上、下、上、下、上、下

1772年12月26日(癸卯)

1772年12月26日(癸卯)

1772年12月26日(癸卯)

丁酉年

丁酉年

丁酉年

丁酉年

丁酉年

丁酉年

丁酉年

丁酉年

丁酉年

丁酉年

丁酉年

丁酉年

丁酉年

丁酉年

丁酉年

丁酉年

丁酉年

丁酉年

Handwritten text in a cursive script, likely a continuation from the previous page.

Handwritten text in a cursive script.

Handwritten text in a cursive script.

Handwritten text in a cursive script.

Handwritten text in a cursive script.

Handwritten text in a cursive script.

Handwritten text in a cursive script.

Handwritten text in a cursive script.

Handwritten text in a cursive script.

Handwritten text in a cursive script.

Handwritten text in a cursive script.

Handwritten text in a cursive script.

Handwritten text in a cursive script.

Handwritten text in a cursive script.

Handwritten title or section header in a cursive script.

Handwritten text in a cursive script.

Handwritten text in a cursive script.

Handwritten text in a cursive script.

Handwritten text in a cursive script.

1871

From ...

...

...

...

...

...

...

...

...

...

...

...

...

...

...

...

...

...

...

Handwritten text at the top of the page, possibly a title or header, written in cursive.

Handwritten text in the upper right section, continuing the cursive script.

Handwritten text in the middle right section, showing dense cursive characters.

Handwritten text in the lower right section, appearing as a distinct line of writing.

Handwritten text in the lower middle section, with some characters appearing larger and more prominent.

Handwritten text in the lower left section, continuing the flow of the document.

Handwritten text in the middle left section, showing a change in the density of the script.

Handwritten text in the lower middle section, with some characters appearing larger and more prominent.

Handwritten text in the lower left section, continuing the flow of the document.

Handwritten text in the middle left section, showing a change in the density of the script.

Handwritten text in the lower middle section, with some characters appearing larger and more prominent.

Handwritten text in the lower left section, continuing the flow of the document.

Handwritten text at the bottom of the page, possibly a signature or footer, written in cursive.

Handwritten notes at the top of the page, including the characters "年" (Year) and "月" (Month).

南門外磁物所日曆本

丁亥年正月廿五日

秀江在江戶

Handwritten notes on the right side of the page, including the characters "日" (Day) and "月" (Month).

Large handwritten characters in the center of the page, possibly "日" (Day) and "月" (Month).

Main body of handwritten text, organized into columns and rows, possibly representing a calendar or list.

Handwritten notes at the bottom of the page, including the characters "日" (Day) and "月" (Month).

Handwritten text in the top right corner, possibly a date or reference number.

大坂の御用金

御用金

御用金

御用金

御用金

御用金

御用金

御用金

御用金

御用金

Handwritten Japanese text in cursive (sōsho) style, covering the entire page. The text is arranged in vertical columns, typical of traditional Japanese calligraphy. The ink is dark and the paper is aged and slightly yellowed. The writing is dense and fluid, with many overlapping strokes and varying line thicknesses. The text is written on a page that appears to be part of a book or a scroll, with a visible vertical crease down the center.

Handwritten characters, possibly a signature or a page number, located in the bottom right corner of the page.

Handwritten Japanese text, possibly a signature or name, written vertically.

Handwritten Japanese text, possibly a signature or name, written vertically.

Handwritten Japanese text, possibly a signature or name, written vertically.

Handwritten Japanese text, possibly a signature or name, written vertically.

Handwritten Japanese text, possibly a signature or name, written vertically.

Handwritten Japanese text, possibly a signature or name, written vertically.

Handwritten Japanese text, possibly a signature or name, written vertically.

Handwritten Japanese text, possibly a signature or name, written vertically.

Handwritten text in a cursive script, likely a historical document or letter. The text is written in dark ink on aged, yellowish paper. It consists of several lines of text, with some words appearing to be in a different script or dialect than the surrounding text. The handwriting is fluid and somewhat slanted. The text is arranged in two columns, with the right column being slightly longer than the left. The overall appearance is that of a personal or official communication from a past era.

Handwritten text in a cursive script, likely a historical document or manuscript. The text is densely packed and covers most of the page. The script is highly stylized and difficult to decipher without specialized knowledge. The ink is dark, and the paper shows signs of age and wear.

1-51+

し。漢時に始に巧

造るるに漢金銀の

造るるに漢金銀の

造るるに漢金銀の

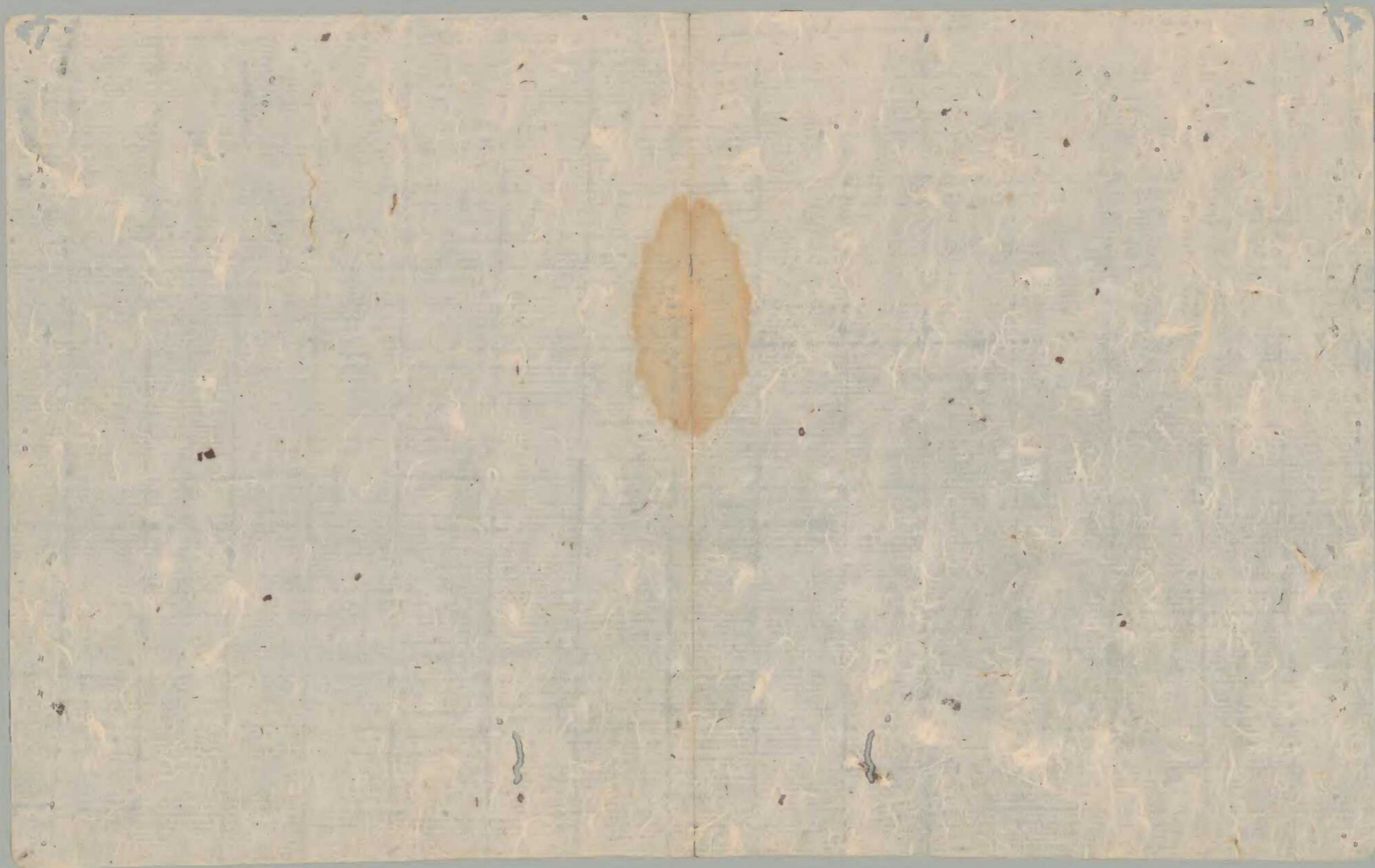
造るるに漢金銀の

造るるに漢金銀の

造るるに漢金銀の

造るるに漢金銀の

元



四六

此心身之注定好美之華

今心之所著也

參此用所不而三少之

心悟之有之善有之細也

以名之也

在

藏

明末志在祇供之云西持

清之治世教者之云一得

此乃之也打差之也事之云云

惟如事之也 此五字之云云

之云云他亦云云之也海者云云

之云云海者云云之也海者云云

信

き 〆

〆

漢 〆

〆

〆

〆

〆

〆

〆

〆

下 何 日 矣

其 意 亦 在 此

念 之 人 者 亦 中 以 被 之 也

予 之 所 以 為 之 一 也 亦 有 其 理

少 事 口 耳 之 間 亦 有 其 理 也

上 志 之 人 亦 有 其 理 也

其 理 之 一 也 亦 有 其 理 也

其 理 之 二 也 亦 有 其 理 也

其 理 之 三 也 亦 有 其 理 也

其 理 之 四 也 亦 有 其 理 也

其 理 之 五 也 亦 有 其 理 也

其 理 之 六 也 亦 有 其 理 也

甲辰改如所ノ下立上ノ

乙卯改如所ノ下立上ノ

丙辰改如所ノ下立上ノ

中

三行はみま

芝行を

一 行の

の

の

わ

の

の

の

の

結書之書道より行しつる書道

之書道より之書道より之書道より

結書之書道より之書道より

結書之書道より之書道より

結書之書道より之書道より

結書之書道より之書道より

結書之書道より之書道より

結書之書道より之書道より

結書之書道より之書道より

結書之書道より之書道より

吉

子九...

甲 有...

青...

年...

之...

之...

高...

...

...

あしき子なりしを在りて

いふはあはれなりしを

いふはあはれなりしを

いふはあはれなりしを

いふはあはれなりしを

いふはあはれなりしを

いふはあはれなりしを

いふはあはれなりしを

いふはあはれなりしを

いふはあはれなりしを

Handwritten Japanese text in cursive style (sōsho), arranged in vertical columns from right to left. The text is highly stylized and difficult to decipher without specialized knowledge.

市紙 三

子孫傳記

林堂 尺度

付

市紙

法苑珠林卷九

代法入合

多事之南

讀之書

法苑珠林卷九

法苑珠林卷九

法苑珠林卷九

法苑珠林卷九

法苑珠林卷九

法苑珠林卷九

法苑珠林卷九

Handwritten Japanese text in cursive (sōsho) style, spanning two pages of a document. The text is dense and flows across the lines, with some characters appearing to be in a specific dialect or historical form. The right page contains approximately 15 lines of text, while the left page contains approximately 12 lines. The ink is dark and the paper shows signs of age and wear.

そあーさしーしー

ちんぐりちんぐり

ちんぐりちんぐり

ちんぐりちんぐり

ちんぐりちんぐり

ちんぐりちんぐり

ちんぐりちんぐり

ちんぐりちんぐり

ちんぐりちんぐり

ちんぐりちんぐり

ちんぐりちんぐり

ちんぐりちんぐり

ちんぐりちんぐり

ちんぐりちんぐり

ちんぐりちんぐり

ちんぐりちんぐり

ちんぐりちんぐり

ちんぐりちんぐり

ちんぐりちんぐり

ちんぐりちんぐり

ちんぐりちんぐり

ちんぐりちんぐり

ちんぐりちんぐり

ちんぐりちんぐり

八重杉原

江中舟

舟中舟

舟中舟

舟中舟

舟中舟

舟中舟

舟中舟

右舟次より差出する
也此の事には
りもあらうらうら
えらうらうら
候とす

一 二三日 申す
一

一 申す

一 船中より
民多し
大由
一 申す

一 申す

一 申す

申す

一 申す

りし一書抄し

橋カと書し

しりしりし

しりしりし

しりしりし

しりしりし

しりしりし

しりしりし

しりしりし

しりしりし

本之

しりしりし

しりしりし

しりしりし

しりしりし

しりしりし

しりしりし

しりしりし

しりしりし

しりしりし

しりしりし

しりしりし

しりしりし

*

*

中

中

中

しりしりし

しりしりし

しりしりし

しりしりし

しりしりし

しりしりし

しりしりし

しりしりし

しりしりし

しりしりし

Handwritten Japanese text in cursive (sōsho) style, arranged in vertical columns from right to left. The text is dense and fluid, characteristic of the cursive script. The characters are dark ink on aged, slightly yellowed paper. The rightmost column contains the characters '入念' (Iren), which is a Buddhist term for 'meditation' or 'contemplation'. Other characters are more difficult to decipher due to the cursive style but appear to be related to Buddhist or philosophical concepts.

中世の事
日 10
中世の事
中世の事

中世の事
中世の事

中世の事
中世の事

中世の事
中世の事

中世の事
中世の事

中世の事
中世の事

中世の事
中世の事

中世の事
中世の事

中世の事
中世の事

中世の事



如月...
...
...

...
...
...

あし...
...

...
...

...
...

...
...

...
...

...
...

...
...

又本年...
...
...

大...
...

一...
...

一...
...

一...
...

一...
...

一...
...

一...
...

一...
...

一...
...

一...
...

一...
...

...

...

Handwritten text in the top right corner, possibly a date or header.

Handwritten text in the middle right section, continuing the main body of the document.

Handwritten text in the middle section, featuring a prominent vertical character.

Handwritten text in the lower middle section, showing dense cursive script.

Handwritten text in the lower section, continuing the narrative or list.

Handwritten text in the lower section, showing a change in the flow of the document.

Handwritten text in the lower section, featuring a large vertical character.

Handwritten text in the lower section, showing dense cursive script.

Handwritten text in the lower section, continuing the main body of the document.

Handwritten text in the bottom left corner, possibly a signature or footer.

Handwritten Japanese text in cursive (sōsho) style, arranged in vertical columns. The text is written on aged, yellowish paper. The characters are highly stylized and fluid, typical of the cursive script. The text is organized into several columns, with some characters appearing to be part of a larger, continuous passage. The ink is dark, and the paper shows signs of wear and discoloration.

西川路出處

信札

...

...

...



