

1 2011.10.14

1 2011.10.14

1 2011.10.14

1 2011.10.14

1 2011.10.14

1 2011.10.14

1 2011.10.14

1 2011.10.14

1 2011.10.14

1 2011.10.14

1 2011.10.14

1 2011.10.14

1 2011.10.14

1 2011.10.14

1 2011.10.14

1 2011.10.14

1 2011.10.14

1 2011.10.14

又得少人

志の事

化明

得

行

其

行

行

行

行

行

行

1 1870年12月10日

1 1870年12月10日

1 1870年12月10日

1 1870年12月10日

1 1870年12月10日

1 1870年12月10日

1 1870年12月10日

1 1870年12月10日

1 1870年12月10日

1 1870年12月10日

1 1870年12月10日

1 1870年12月10日

1870年

1 1870年12月10日

1 1870年12月10日

1 1870年12月10日

1 抄本 卷之五 尾

1 抄本 卷之六 尾

田 抄本

抄本 卷之七 尾

1 抄本 卷之八 尾

抄本 卷之九 尾

1 抄本 卷之十 尾

抄本 卷之十一 尾

1 抄本 卷之十二 尾

抄本 卷之十三 尾

1 抄本 卷之十四 尾

抄本 卷之十五 尾

抄本 卷之十六 尾

抄本 卷之十七 尾

抄本 卷之十八 尾

1 抄本 卷之十九 尾

尾

1 塔法 此乃一打馬路也

夏 人 心 記 附 本

此乃一打馬路也
此乃一打馬路也
此乃一打馬路也
此乃一打馬路也
此乃一打馬路也
此乃一打馬路也
此乃一打馬路也
此乃一打馬路也
此乃一打馬路也
此乃一打馬路也

1 此乃一打馬路也
此乃一打馬路也
此乃一打馬路也
此乃一打馬路也
此乃一打馬路也
此乃一打馬路也
此乃一打馬路也
此乃一打馬路也
此乃一打馬路也
此乃一打馬路也

1 此乃一打馬路也
此乃一打馬路也
此乃一打馬路也
此乃一打馬路也
此乃一打馬路也
此乃一打馬路也
此乃一打馬路也
此乃一打馬路也
此乃一打馬路也
此乃一打馬路也

Handwritten text at the top of the right page.

Handwritten text on the right page, possibly a signature or name.

1 20th ...

Handwritten text below the first line on the right page.

Handwritten text below the second line on the right page.

Large, bold handwritten characters on the right page.

Large, bold handwritten characters on the right page.

Handwritten text on the right page, possibly a signature or name.

1 20th ...

Handwritten text below the first line on the left page.

Handwritten text below the second line on the left page.

Handwritten text below the third line on the left page.

Handwritten text below the fourth line on the left page.

Handwritten text below the fifth line on the left page.

1 20th ...

Large, bold handwritten characters on the left page.

Handwritten text below the first line on the left page.

Handwritten text below the second line on the left page.

Handwritten text below the third line on the left page.

Handwritten text in a cursive script, likely representing a list or account. The text is written vertically and includes various characters and symbols, possibly representing numbers or specific items.

Handwritten text in a cursive script, continuing the list or account. The characters are fluid and connected, typical of historical Japanese calligraphy.

Handwritten text in a cursive script, showing further entries in the list. The script is consistent with the previous sections.

Handwritten text in a cursive script, possibly a concluding section or a specific entry. The characters are large and prominent.

Handwritten text in a cursive script, located at the bottom of the page. It appears to be a separate section or a continuation of the main text.

1. 此項事務係由本館...
 2. 凡有關於...
 3. 凡有關於...
 4. 凡有關於...
 5. 凡有關於...
 6. 凡有關於...
 7. 凡有關於...
 8. 凡有關於...
 9. 凡有關於...
 10. 凡有關於...

此項事務係由本館...

1. 凡有關於...
 2. 凡有關於...
 3. 凡有關於...
 4. 凡有關於...
 5. 凡有關於...
 6. 凡有關於...
 7. 凡有關於...
 8. 凡有關於...
 9. 凡有關於...
 10. 凡有關於...

此項事務係由本館...

Handwritten text at the top of the right page, possibly a title or header.

Handwritten text on the right page, first line.

Handwritten text on the right page, second line.

Handwritten text on the right page, third line.

Handwritten text on the right page, fourth line.

Handwritten text on the right page, fifth line.

Handwritten text on the right page, sixth line.

Handwritten text on the right page, seventh line.

Handwritten text on the right page, eighth line.

Handwritten text on the right page, ninth line.

Handwritten text on the right page, tenth line.

Handwritten text on the right page, eleventh line.

Handwritten text on the right page, twelfth line.

Handwritten text on the right page, thirteenth line.

Handwritten text on the right page, fourteenth line.

Handwritten text on the right page, fifteenth line.

Handwritten text on the right page, sixteenth line.

Handwritten text in the top section of the document, consisting of several lines of cursive script.

Handwritten text in the middle section of the document, including a signature and a date.

88
81
輸入紙

Handwritten text in the bottom section of the document, possibly a date or reference number.

1
to

Handwritten text in a cursive script, likely representing a list or a set of instructions. The text is written in a fluid, connected style.

1
Handwritten text, possibly a section header or a specific instruction.

Handwritten text in a cursive script, continuing the list or instructions from the previous page. The text is written in a fluid, connected style.

15 15
1 完天... 4000... 4000... 4000...
Maxima

1 完天... 4000... 4000... 4000...
Maxima
1 完天... 4000... 4000... 4000...
Maxima
1 完天... 4000... 4000... 4000...
Maxima

1 完天... 4000... 4000... 4000...
Maxima
1 完天... 4000... 4000... 4000...
Maxima
1 完天... 4000... 4000... 4000...
Maxima

1st 2nd 3rd
4th 5th 6th
7th 8th 9th
10th 11th 12th
13th 14th 15th
16th 17th 18th
19th 20th 21st
22nd 23rd 24th
25th 26th 27th
28th 29th 30th
31st 32nd 33rd
34th 35th 36th
37th 38th 39th
40th 41st 42nd
43rd 44th 45th
46th 47th 48th
49th 50th 51st
52nd 53rd 54th
55th 56th 57th
58th 59th 60th
61st 62nd 63rd
64th 65th 66th
67th 68th 69th
70th 71st 72nd
73rd 74th 75th
76th 77th 78th
79th 80th 81st
82nd 83rd 84th
85th 86th 87th
88th 89th 90th
91st 92nd 93rd
94th 95th 96th
97th 98th 99th
100th

1st 2nd 3rd
4th 5th 6th
7th 8th 9th
10th 11th 12th
13th 14th 15th
16th 17th 18th
19th 20th 21st
22nd 23rd 24th
25th 26th 27th
28th 29th 30th
31st 32nd 33rd
34th 35th 36th
37th 38th 39th
40th 41st 42nd
43rd 44th 45th
46th 47th 48th
49th 50th 51st
52nd 53rd 54th
55th 56th 57th
58th 59th 60th
61st 62nd 63rd
64th 65th 66th
67th 68th 69th
70th 71st 72nd
73rd 74th 75th
76th 77th 78th
79th 80th 81st
82nd 83rd 84th
85th 86th 87th
88th 89th 90th
91st 92nd 93rd
94th 95th 96th
97th 98th 99th
100th

Handwritten text at the top right of the page.

佛教書

Handwritten text in the upper right section, including the characters '佛教書'.

Handwritten text in the middle right section.

Handwritten text in the lower right section.

Handwritten text in the middle left section.

Handwritten text in the lower left section.

中国の文化

Handwritten text in the lower left section.

Handwritten text in the lower left section.

Handwritten text in the lower left section.

Handwritten text in the lower left section.

— 1000 —

— 1000 —

— 1000 —

— 1000 —

— 1000 —

— 1000 —

— 1000 —

— 1000 —

— 1000 —

— 1000 —

— 1000 —

— 1000 —

— 1000 —

— 1000 —

— 1000 —

— 1000 —

— 1000 —

— 1000 —

— 1000 —

— 1000 —

1 20th June 1864 - 21st July 1864

1 21st July 1864 - 21st August 1864

1 21st August 1864 - 21st September 1864

1 21st September 1864 - 21st October 1864

1 21st October 1864 - 21st November 1864

1 21st November 1864 - 21st December 1864

1 21st December 1864 - 21st January 1865

1 21st January 1865 - 21st February 1865

1 21st February 1865 - 21st March 1865

1 21st March 1865 - 21st April 1865

1 21st April 1865 - 21st May 1865

1 21st May 1865 - 21st June 1865

1 21st June 1865 - 21st July 1865

1 21st July 1865 - 21st August 1865

1 21st August 1865 - 21st September 1865

1 21st September 1865 - 21st October 1865

1 21st October 1865 - 21st November 1865

1 21st November 1865 - 21st December 1865

1 21st December 1865 - 21st January 1866

21st January 1866

Handwritten text in a cursive script, likely a letter or document. The text is written in a fluid, connected style. The first line is partially cut off at the top edge. The text appears to be in a historical or regional script, possibly related to the Japanese archipelago.

Handwritten text in a cursive script, continuing from the previous page. The text is written in a fluid, connected style. The first line is partially cut off at the top edge. The text appears to be in a historical or regional script, possibly related to the Japanese archipelago.

Handwritten text in a cursive script, continuing from the previous page. The text is written in a fluid, connected style. The first line is partially cut off at the top edge. The text appears to be in a historical or regional script, possibly related to the Japanese archipelago.

Handwritten text in a cursive script, continuing from the previous page. The text is written in a fluid, connected style. The first line is partially cut off at the top edge. The text appears to be in a historical or regional script, possibly related to the Japanese archipelago.

Handwritten text in a cursive script, continuing from the previous page. The text is written in a fluid, connected style. The first line is partially cut off at the top edge. The text appears to be in a historical or regional script, possibly related to the Japanese archipelago.

Small handwritten mark or signature at the bottom of the page.

— 漢書 —

卷

— 漢書 — 卷之四

— 漢書 — 卷之四

— 漢書 — 卷之四

— 漢書 — 卷之四

— 漢書 — 卷之四

— 漢書 — 卷之四

— 漢書 — 卷之四

卷

— 漢書 — 卷之四

— 漢書 — 卷之四

88
88

— 1876 —

1 第一條 凡在東京府內居住者

1 凡在東京府內居住者其戶口

1 凡在東京府內居住者其戶口

1 凡在東京府內居住者其戶口

1 凡在東京府內居住者其戶口

1 凡在東京府內居住者其戶口

1 凡在東京府內居住者其戶口

1 凡在東京府內居住者其戶口

抄一

聖書一四三

抄一

聖書一四三

抄一

聖書一四三

抄一

聖書一四三

聖書

抄一

聖書一四三

抄一

聖書一四三

抄一

聖書一四三

抄一

聖書一四三

抄一

聖書一四三

抄一

聖書一四三

抄一

聖書一四三

抄一

聖書一四三

抄一

聖書一四三

抄一

聖書一四三

抄一

聖書一四三

抄一

聖書一四三

抄一

聖書一四三

抄一

聖書一四三

抄一

聖書一四三

[Faint, mostly illegible handwritten text, possibly bleed-through from the reverse side.]

高麗

以

二

夜

一

下

信

[Faint, mostly illegible handwritten text, possibly bleed-through from the reverse side.]

高麗

以

二

夜

一

下

信

信

1. 德意志 (Deutschland) 德意志帝国 (Deutsches Reich)
2. 奥地利 (Österreich) 奥地利帝国 (Österreichisches Reich)
3. 普鲁士 (Preußen) 普鲁士王国 (Königreich Preußen)
4. 巴伐利亚 (Bayern) 巴伐利亚王国 (Königreich Bayern)
5. 萨克森 (Sachsen) 萨克森王国 (Königreich Sachsen)

1. 波兰 (Polen) 波兰王国 (Königreich Polen)
2. 俄罗斯 (Russland) 俄罗斯帝国 (Russisches Reich)
3. 法国 (Frankreich) 法兰西共和国 (Republik Frankreich)
4. 意大利 (Italien) 意大利王国 (Königreich Italien)
5. 西班牙 (Spanien) 西班牙王国 (Königreich Spanien)

1. 葡萄牙 (Portugal) 葡萄牙王国 (Königreich Portugal)
2. 希腊 (Griechenland) 希腊王国 (Königreich Griechenland)
3. 土耳其 (Türkei) 奥斯曼帝国 (Osmanisches Reich)
4. 埃及 (Ägypten) 埃及王国 (Königreich Ägypten)
5. 印度 (Indien) 印度帝国 (British India)

1. 中国 (China) 大清帝国 (Großes Reich der Mitte)
2. 日本 (Japan) 大日本帝国 (Großes Reich des Ostens)
3. 朝鲜 (Korea) 大韩帝国 (Großes Reich der Chosŏn)
4. 越南 (Vietnam) 越南王国 (Königreich Annam)
5. 暹罗 (Siam) 暹罗王国 (Königreich Siam)

1. 岩波館の発行する『新編
 日本書紀』の巻末に、
 『新編日本書紀』の巻末に、
 『新編日本書紀』の巻末に、
 『新編日本書紀』の巻末に、

1. 岩波館の発行する『新編
 日本書紀』の巻末に、
 『新編日本書紀』の巻末に、
 『新編日本書紀』の巻末に、
 『新編日本書紀』の巻末に、

1. 岩波館の発行する『新編
 日本書紀』の巻末に、
 『新編日本書紀』の巻末に、
 『新編日本書紀』の巻末に、
 『新編日本書紀』の巻末に、

1. 岩波館の発行する『新編
 日本書紀』の巻末に、
 『新編日本書紀』の巻末に、
 『新編日本書紀』の巻末に、
 『新編日本書紀』の巻末に、

88
 88
 岩波館の発行する『新編
 日本書紀』の巻末に、
 『新編日本書紀』の巻末に、
 『新編日本書紀』の巻末に、
 『新編日本書紀』の巻末に、

Handwritten text in a cursive script, likely a signature or name.

Handwritten text in a cursive script, possibly a date or a short message.

Handwritten text in a cursive script, possibly a name or title.

Handwritten text in a cursive script, possibly a name or title.

Handwritten text in a cursive script, possibly a name or title.

Handwritten text in a cursive script, possibly a name or title.

Handwritten text in a cursive script, possibly a name or title.

Handwritten text in a cursive script, possibly a name or title.

Handwritten text in a cursive script, possibly a name or title.

Handwritten text in a cursive script, possibly a name or title.

1. 1840年1月1日 倫敦-紐約 郵船
1. 倫敦-紐約 郵船 (London-New York)
1. 倫敦-紐約 郵船 (London-New York)

1. 倫敦-紐約 郵船 (London-New York)

倫敦-紐約 郵船 (London-New York)
倫敦-紐約 郵船 (London-New York)

倫敦-紐約 郵船 (London-New York)
倫敦-紐約 郵船 (London-New York)

倫敦-紐約 郵船 (London-New York)
倫敦-紐約 郵船 (London-New York)

倫敦-紐約 郵船 (London-New York)
倫敦-紐約 郵船 (London-New York)

1-441-10-10

1-441-10-10-10

1-441-10-10-10-10

1-441-10-10-10-10-10

1-441-10-10-10-10-10-10

1-441-10-10-10-10-10-10-10

1-441-10-10-10-10-10-10-10-10

1-441-10-10-10-10-10-10-10-10-10

1-441-10-10-10-10-10-10-10-10-10-10

1-441-10-10-10-10-10-10-10-10-10-10-10

1-441-10-10-10-10-10-10-10-10-10-10-10-10

1-441-10-10-10-10-10-10-10-10-10-10-10-10-10

1-441-10-10-10-10-10-10-10-10-10-10-10-10-10-10

1-441-10-10-10-10-10-10-10-10-10-10-10-10-10-10-10

1-441-10-10-10-10-10-10-10-10-10-10-10-10-10-10-10-10

心後無以暇云云

臨存世西物ノ才云々

寛政五年正月一日 幸 藤原 院 御入 御行

二月 幸 藤原 院 御入 御行 御入 御行

三月 幸 藤原 院 御入 御行 御入 御行

四月 幸 藤原 院 御入 御行 御入 御行

五月 幸 藤原 院 御入 御行 御入 御行

六月 幸 藤原 院 御入 御行 御入 御行

七月 幸 藤原 院 御入 御行 御入 御行

八月 幸 藤原 院 御入 御行 御入 御行

九月 幸 藤原 院 御入 御行 御入 御行

十月 幸 藤原 院 御入 御行 御入 御行

十一月 幸 藤原 院 御入 御行 御入 御行

十二月 幸 藤原 院 御入 御行 御入 御行

一月 幸 藤原 院 御入 御行 御入 御行

二月 幸 藤原 院 御入 御行 御入 御行

三月 幸 藤原 院 御入 御行 御入 御行

四月 幸 藤原 院 御入 御行 御入 御行

五月 幸 藤原 院 御入 御行 御入 御行

六月 幸 藤原 院 御入 御行 御入 御行

七月 幸 藤原 院 御入 御行 御入 御行

八月 幸 藤原 院 御入 御行 御入 御行

九月 幸 藤原 院 御入 御行 御入 御行

807

... 20 ...

... 10 ...

... 10 ...

... 10 ...

... 10 ...

... 10 ...

... 10 ...

... 10 ...

... 10 ...

... 10 ...

... 10 ...

... 10 ...

... 10 ...

... 10 ...

... 10 ...

... 10 ...

... 10 ...

... 10 ...

1 10112 皇族の志願 (11121 11121 11121)

皇族の志願

皇族の志願 (11121 11121 11121)

皇族の志願 (11121 11121 11121)

皇族の志願 (11121 11121 11121)

皇族

1 皇族の志願 (11121 11121 11121)

皇族の志願 (11121 11121 11121)

1 皇族の志願 (11121 11121 11121)

1 皇族の志願 (11121 11121 11121)

1 皇族の志願 (11121 11121 11121)

皇族

1 皇族の志願 (11121 11121 11121)

1 皇族の志願 (11121 11121 11121)

皇族

皇族の志願 (11121 11121 11121)

1 皇族の志願 (11121 11121 11121)

皇族の志願 (11121 11121 11121)

皇族

1 庚辰

1 为C... 庚辰年... 庚辰年... 庚辰年...

庚辰年... 庚辰年... 庚辰年... 庚辰年...

庚辰年... 庚辰年... 庚辰年... 庚辰年...

庚辰年... 庚辰年... 庚辰年... 庚辰年...

庚辰年... 庚辰年... 庚辰年... 庚辰年...

庚辰年... 庚辰年... 庚辰年... 庚辰年...

庚辰年... 庚辰年... 庚辰年... 庚辰年...

庚辰年... 庚辰年... 庚辰年... 庚辰年...

庚辰年... 庚辰年... 庚辰年... 庚辰年...

庚辰年... 庚辰年... 庚辰年... 庚辰年...

庚辰年... 庚辰年... 庚辰年... 庚辰年...

庚辰年... 庚辰年... 庚辰年... 庚辰年...

庚辰年... 庚辰年... 庚辰年... 庚辰年...

庚辰年... 庚辰年... 庚辰年... 庚辰年...

庚辰年... 庚辰年... 庚辰年... 庚辰年...

庚辰年... 庚辰年... 庚辰年... 庚辰年...

庚辰年... 庚辰年... 庚辰年... 庚辰年...

庚辰年... 庚辰年... 庚辰年... 庚辰年...

庚辰年... 庚辰年... 庚辰年... 庚辰年...

庚辰年... 庚辰年... 庚辰年... 庚辰年...

Handwritten text at the top right of the page.

Handwritten text in the upper right section.

Handwritten text in the upper right section.

Handwritten text in the upper right section.

Handwritten text in the upper right section.

Handwritten text in the upper right section.

Handwritten text in the upper right section.

Handwritten text in the upper right section.

Handwritten text in the upper right section.

Handwritten text in the upper right section.

Handwritten text in the upper right section.

Handwritten text in the upper right section.

Handwritten text in the upper right section.

Handwritten text in the upper right section.

Handwritten text in the upper right section.

Handwritten text in the upper right section.

Handwritten text in the lower right section.

Handwritten text in the lower right section.

Handwritten text in the lower right section.

Handwritten text in the lower right section.

Handwritten text in the lower right section.

Handwritten text in the lower right section.

Handwritten text in the lower right section.

Handwritten text in the lower right section.

Handwritten text in the lower right section.

Handwritten text in the lower right section.

Handwritten text in the lower right section.

Handwritten text in the lower right section.

Handwritten text in the lower right section.

Handwritten text in the lower right section.

Handwritten text in the lower right section.

Handwritten text in the middle left section.

Large handwritten text in the bottom left section.

貞和三年十月廿九日 卷之九 一 方節 三 卷之九 定

大正十一年十月廿九日 卷之九 一 方節 三 卷之九 定

大正十一年十月廿九日 卷之九 一 方節 三 卷之九 定

大正十一年十月廿九日 卷之九 一 方節 三 卷之九 定

大正十一年十月廿九日 卷之九 一 方節 三 卷之九 定

大正十一年十月廿九日 卷之九 一 方節 三 卷之九 定

大正十一年十月廿九日 卷之九 一 方節 三 卷之九 定

大正十一年十月廿九日 卷之九 一 方節 三 卷之九 定

大正十一年十月廿九日 卷之九 一 方節 三 卷之九 定

大正十一年十月廿九日 卷之九 一 方節 三 卷之九 定

大正十一年十月廿九日 卷之九 一 方節 三 卷之九 定

大正十一年十月廿九日 卷之九 一 方節 三 卷之九 定

大正十一年十月廿九日 卷之九 一 方節 三 卷之九 定

大正十一年十月廿九日 卷之九 一 方節 三 卷之九 定

大正十一年十月廿九日 卷之九 一 方節 三 卷之九 定

大正十一年十月廿九日 卷之九 一 方節 三 卷之九 定

大正十一年十月廿九日 卷之九 一 方節 三 卷之九 定

大正十一年十月廿九日 卷之九 一 方節 三 卷之九 定

大正十一年十月廿九日 卷之九 一 方節 三 卷之九 定

大正十一年十月廿九日 卷之九 一 方節 三 卷之九 定

大正十一年十月廿九日 卷之九 一 方節 三 卷之九 定

大正十一年十月廿九日 卷之九 一 方節 三 卷之九 定

大正十一年十月廿九日 卷之九 一 方節 三 卷之九 定

大正十一年十月廿九日 卷之九 一 方節 三 卷之九 定

大正十一年十月廿九日 卷之九 一 方節 三 卷之九 定

大正十一年十月廿九日 卷之九 一 方節 三 卷之九 定

Handwritten header text at the top of the page.

Handwritten text line 1, starting with a large character.

Handwritten text line 2, continuing the script.

Handwritten text line 3, showing dense cursive characters.

Handwritten text line 4, with some characters appearing to be crossed out.

Handwritten text line 5, continuing the flow of the document.

Handwritten text line 6, featuring a mix of character styles.

Handwritten text line 7, showing a transition in the script.

Handwritten text line 8, with a large character at the beginning.

Handwritten text line 9, continuing the dense cursive writing.

Handwritten text line 10, showing a change in the character forms.

Handwritten text line 11, with a large character at the start.

Handwritten text line 12, continuing the script.

Handwritten text line 13, showing a mix of character styles.

Handwritten text line 14, with a large character at the beginning.

Handwritten text line 15, continuing the flow of the document.

Handwritten text line 16, showing a transition in the script.

Vertical text at the bottom of the page, possibly a signature or date.

北行二十文
北行二十文

北行二十文
北行二十文

北行二十文
北行二十文

北行二十文
北行二十文

北行二十文
北行二十文

北行二十文
北行二十文

北行二十文
北行二十文

北行二十文
北行二十文

北行二十文
北行二十文

100

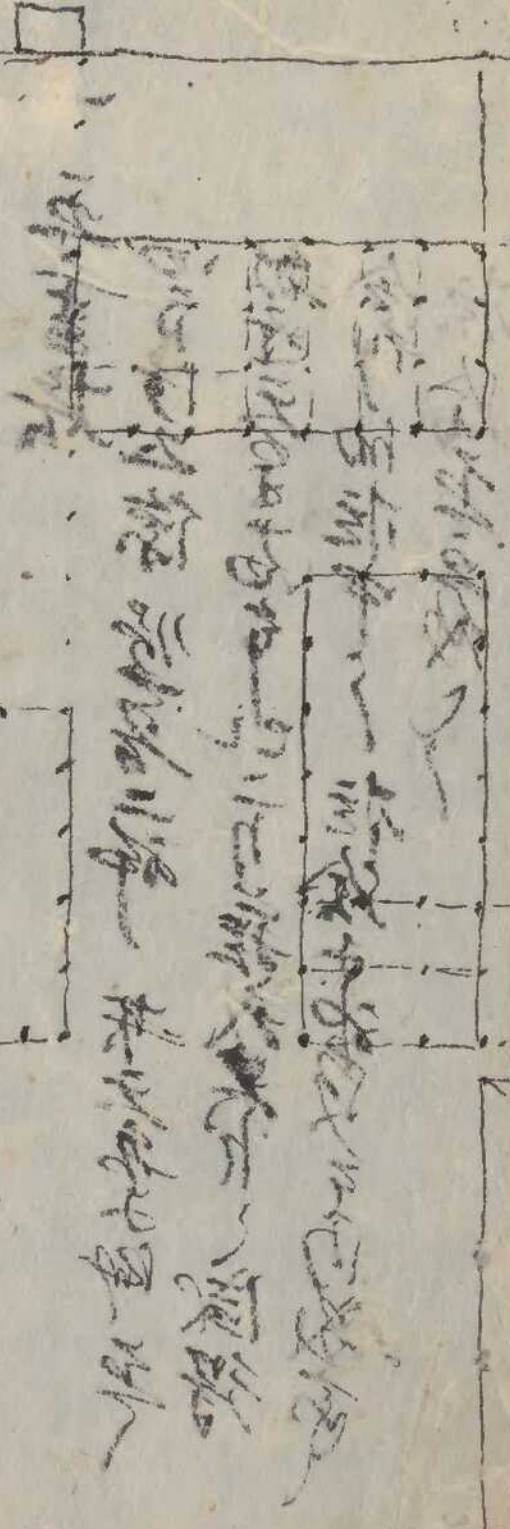
Handwritten text at the top right, possibly a title or header.

Handwritten text in the upper middle section, including a vertical line and several lines of script.

Handwritten text on the left side of the upper middle section.

Handwritten text in the middle section, below the first vertical line.

Handwritten text on the left side of the middle section.



Handwritten text in the lower middle section, including a vertical line and several lines of script.

Handwritten text in the lower left section, including a vertical line and several lines of script.

Handwritten text at the top left, possibly a page number or reference.

Handwritten text in a cursive script, likely a list or index.

Handwritten text in a cursive script.

Handwritten text in a cursive script.

Handwritten text in a cursive script.

Handwritten text in a cursive script.

Handwritten text in a cursive script.

Handwritten text in a cursive script.

Handwritten text in a cursive script.

三卷

Handwritten text in a cursive script.

四回

四回

Handwritten text in a cursive script.

Handwritten text in a cursive script.

Handwritten text in a cursive script.

Handwritten text in a cursive script.

Handwritten text in a cursive script.

Small handwritten mark or character.

1 三傳在作下圖以

Handwritten text in a cursive script, likely a transcription of a document. The text is dense and occupies the upper right portion of the page.

88
55
插入紙

Handwritten text in a cursive script, continuing the transcription. It is located in the middle right section of the page.

Handwritten text in a cursive script, appearing as a distinct line or section of the transcription.

Handwritten text in a cursive script, continuing the transcription.

Handwritten text in a cursive script, continuing the transcription.

Handwritten text in a cursive script, continuing the transcription. This section is at the bottom of the page.

88
88

御覽
御覽

1 三傳後世下回

三傳後世下回

三傳後世下回

三傳後世下回

三傳後世下回

三傳後世下回

三傳後世下回

三傳後世下回

三傳後世下回

三傳後世下回

三傳後世下回

三傳後世下回

④

三卷 5

三卷

三卷

三卷 5

三卷

5

三卷 5

三卷

三卷

三卷 5

三卷

5

三卷

5

三卷

5

三卷

5

三卷

三卷

5

三卷

5

三卷

5

三卷

三卷

5

三卷

三卷

三卷

三卷

三卷

三卷

三卷

1700

Handwritten notes in a cursive script, possibly a list or account.

Large, bold handwritten characters, likely a title or a significant entry.

Handwritten text in a cursive script, continuing the notes or list.

Handwritten text in a cursive script, continuing the notes or list.

Handwritten text in a cursive script, continuing the notes or list.

Large handwritten characters, possibly a signature or a date.

Handwritten text in a cursive script, continuing the notes or list.

Handwritten text in a cursive script, continuing the notes or list.

Handwritten text in a cursive script, continuing the notes or list.

Handwritten text in a cursive script, continuing the notes or list.

Handwritten text in a cursive script, continuing the notes or list.

Handwritten text in a cursive script, continuing the notes or list.

Handwritten text in a cursive script, continuing the notes or list.

Handwritten text in a cursive script, continuing the notes or list.

Large handwritten characters at the bottom of the page, possibly a signature or a date.

100

100

100

100

100

100

100

100

100

100

100

100

100

100

100

1. 1st name - 1st name of the...
2. 2nd name - 2nd name of the...
3. 3rd name - 3rd name of the...

1. 1st name - 1st name of the...
2. 2nd name - 2nd name of the...
3. 3rd name - 3rd name of the...

1. 1st name - 1st name of the...
2. 2nd name - 2nd name of the...
3. 3rd name - 3rd name of the...

1. 1st name - 1st name of the...
2. 2nd name - 2nd name of the...
3. 3rd name - 3rd name of the...

1. 1st name - 1st name of the...
2. 2nd name - 2nd name of the...
3. 3rd name - 3rd name of the...

1. 1st name - 1st name of the...
2. 2nd name - 2nd name of the...
3. 3rd name - 3rd name of the...

1. 1st name - 1st name of the...
2. 2nd name - 2nd name of the...
3. 3rd name - 3rd name of the...

The
... ..

[Large, bold, stylized handwritten characters, possibly a signature or title]

... ..
... ..
... ..
... ..

... ..

... ..
... ..
... ..
... ..

... ..

Handwritten title or header in cursive script.

Handwritten characters, possibly a signature or date.

I take the pleasure of your kind remembrance

Handwritten note in cursive.

Handwritten note in cursive.

Handwritten note in cursive.

Handwritten note in cursive.

Handwritten note in cursive.

Handwritten note in cursive.

Handwritten note in cursive.

Handwritten note in cursive.

Handwritten note in cursive.

Handwritten note in cursive.

Handwritten note in cursive.

Handwritten note in cursive.

Handwritten note in cursive.

与信書

内式十之七

十歳为通句

字来の

十

有在

有

信

83
52

一、南

二、

三、

四、

五、

六、

七、

八、

九、

十、

十一、

十二、

十三、

十四、

十五、

十六、

十七、

十八、

十九、

二十、

二十一、

二十二、

二十三、

二十四、

二十五、

二十六、

二十七、

二十八、

二十九、

Handwritten header or title in cursive script.

520

Main body of handwritten cursive text, consisting of approximately 12 lines of dense, flowing script.

88

1770

あつたはらへし
あつたはらへし
あつたはらへし
あつたはらへし
あつたはらへし

小力

新

あつたはらへし

あつたはらへし
あつたはらへし
あつたはらへし
あつたはらへし
あつたはらへし

あつたはらへし
あつたはらへし
あつたはらへし
あつたはらへし
あつたはらへし

あつたはらへし
あつたはらへし
あつたはらへし
あつたはらへし
あつたはらへし

あつたはらへし
あつたはらへし
あつたはらへし
あつたはらへし
あつたはらへし

あつたはらへし
あつたはらへし
あつたはらへし
あつたはらへし
あつたはらへし

あつたはらへし
あつたはらへし
あつたはらへし
あつたはらへし
あつたはらへし

あつたはらへし
あつたはらへし
あつたはらへし
あつたはらへし
あつたはらへし

あつたはらへし
あつたはらへし
あつたはらへし
あつたはらへし
あつたはらへし

あつたはらへし
あつたはらへし
あつたはらへし
あつたはらへし
あつたはらへし

あつたはらへし
あつたはらへし
あつたはらへし
あつたはらへし
あつたはらへし

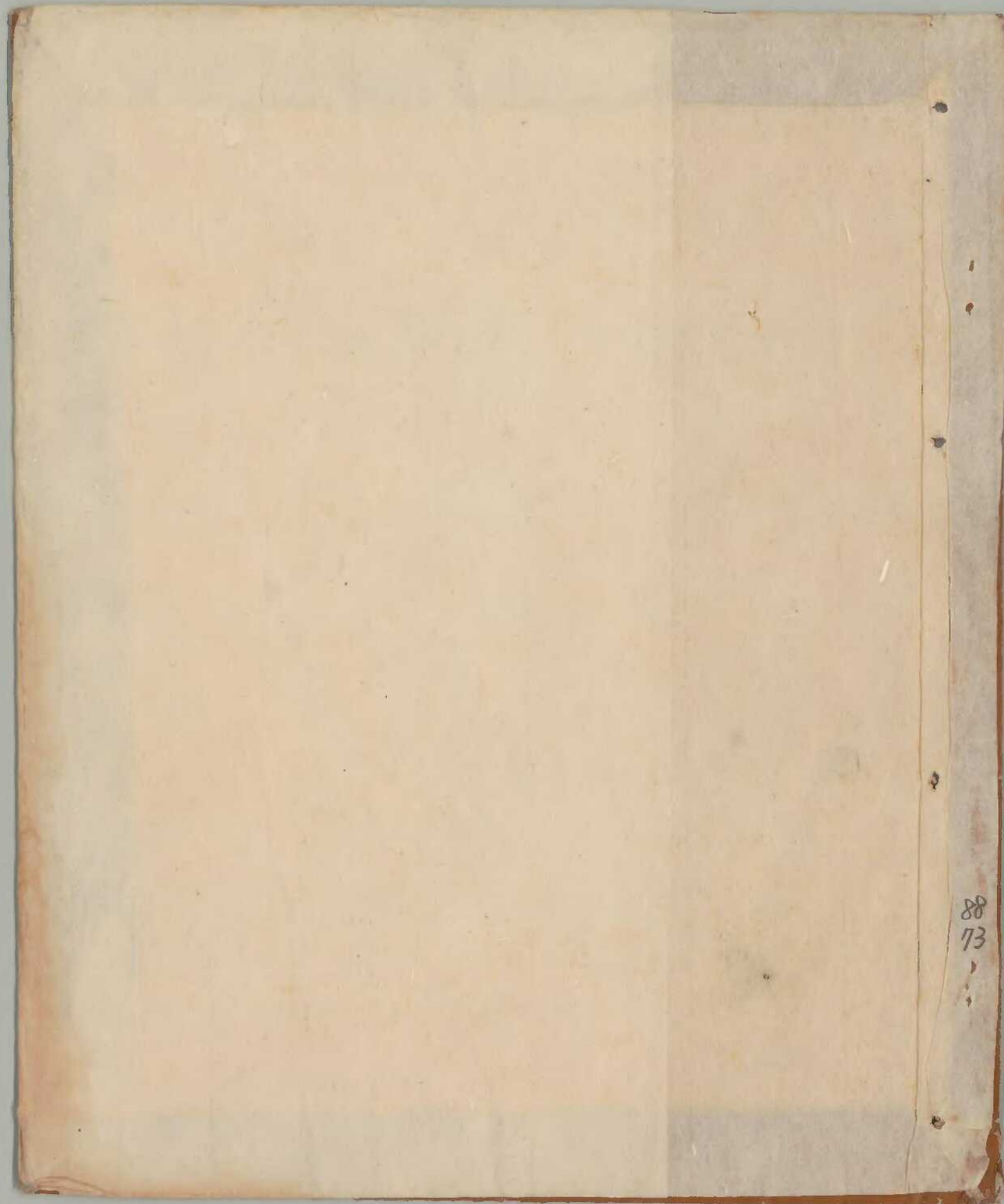
あつたはらへし
あつたはらへし
あつたはらへし
あつたはらへし
あつたはらへし

あつたはらへし
あつたはらへし
あつたはらへし
あつたはらへし
あつたはらへし

88

72





88

73

