

持世菩薩摩訶薩
海印寺
五部經

藏經十卷

大藏經

大集

新嘉坡
在河



以

...

...

| 物持州河 河内郡河内
| 大牟原河 河内郡河内

河内郡

| 河内郡河内河内郡河内
| 河内郡河内河内郡河内

| 河内郡河内河内郡河内

| 河内郡河内河内郡河内

| 河内郡河内河内郡河内

| 河内郡河内河内郡河内

| 河内郡河内河内郡河内

| 河内郡河内河内郡河内

| 河内郡河内河内郡河内

| 河内郡河内河内郡河内

| 河内郡河内河内郡河内

| 河内郡河内河内郡河内

河内郡河内河内郡河内

Handwritten label at the top of the page, possibly indicating a date or reference number.

1 俗世之流故謂之... 此以... 爲... 之... 故... 謂... 之... 俗... 世... 之... 流... 故... 謂... 之... 俗... 世... 之... 流... 故... 謂... 之...

1 此... 故... 謂... 之... 俗... 世... 之... 流... 故... 謂... 之...

1 此... 故... 謂... 之... 俗... 世... 之... 流... 故... 謂... 之...

1 此... 故... 謂... 之... 俗... 世... 之... 流... 故... 謂... 之...

1 此... 故... 謂... 之... 俗... 世... 之... 流... 故... 謂... 之...

1 此... 故... 謂... 之... 俗... 世... 之... 流... 故... 謂... 之...

1 此... 故... 謂... 之... 俗... 世... 之... 流... 故... 謂... 之...

1 此... 故... 謂... 之... 俗... 世... 之... 流... 故... 謂... 之...

1 此... 故... 謂... 之... 俗... 世... 之... 流... 故... 謂... 之...

Large handwritten characters, possibly a signature or a specific name.

Handwritten characters, possibly a date or a reference number.

Handwritten characters, possibly a date or a reference number.

Handwritten title or header in cursive script.

Main body of handwritten text in cursive script, consisting of several lines.

Handwritten text, possibly a signature or a specific section header.

Large block of handwritten text in cursive script, appearing to be a list or a detailed account.

Handwritten text at the bottom of the page, possibly a date or a reference.

113

1 Manuscript of the ...
p. 1

1 Manuscript of the ...
p. 2

1 Manuscript of the ...
p. 3

1 Manuscript of the ...
p. 4

1 Manuscript of the ...
p. 5

1 Manuscript of the ...
p. 6

1 Manuscript of the ...
p. 7

Handwritten text in a cursive script, likely a list or account. The text is written vertically and includes various characters and symbols, possibly representing names or items. The script is dense and difficult to decipher without a key.

Handwritten text, possibly a title or a specific entry, written vertically.

Handwritten text, possibly a title or a specific entry, written vertically.

Handwritten text, possibly a title or a specific entry, written vertically.

Handwritten text, possibly a title or a specific entry, written vertically.

Handwritten text, possibly a title or a specific entry, written vertically.

Handwritten text, possibly a title or a specific entry, written vertically.

1 何物皆於此心結一物隨心而現
也

~~What is the nature of the mind?~~
The mind is like a mirror, reflecting all things without attachment or aversion.
It is empty, clear, and bright, like a polished mirror.

1 何物皆於此心結一物隨心而現
也
The mind is like a mirror, reflecting all things without attachment or aversion.
It is empty, clear, and bright, like a polished mirror.

1 何物皆於此心結一物隨心而現
也
The mind is like a mirror, reflecting all things without attachment or aversion.
It is empty, clear, and bright, like a polished mirror.

之修繕

之修繕

一 此項工程

一 此項工程

青丸

青丸

一 此項工程

一 此項工程

一 此項工程

沙丸

沙丸

一 此項工程

一 此項工程

一 此項工程

一 此項工程

一 此項工程

一 此項工程

一 此項工程

一 此項工程

一 此項工程

一 此項工程

一 此項工程

明年

一 此項工程

一 此項工程

一 此項工程

加

Handwritten text in a cursive script, likely a list or notes.

Handwritten text in a cursive script, likely a list or notes.

Handwritten text in a cursive script, likely a list or notes.

Handwritten text in a cursive script, likely a list or notes.

Handwritten text in a cursive script, likely a list or notes.

Handwritten text in a cursive script, likely a list or notes.

Handwritten characters, possibly a date or a specific entry.

Handwritten text in a cursive script, likely a list or notes.

Handwritten text in a cursive script, likely a list or notes.

Handwritten text in a cursive script, likely a list or notes.

Handwritten text in a cursive script, likely a list or notes.

Handwritten text in a cursive script, likely a list or notes.

Handwritten text in a cursive script, likely a list or notes.

Handwritten text in a cursive script, likely a list or notes.

Handwritten text in a cursive script, likely a list or notes.

1 此後 勿論 勿論

勿論 勿論 勿論 勿論

1 勿論 勿論 勿論 勿論

1 勿論 勿論 勿論

1 勿論 勿論 勿論 勿論

勿論

1 勿論 勿論 勿論

1 勿論 勿論 勿論 勿論

勿論 勿論 勿論

勿論 勿論 勿論 勿論

勿論 勿論 勿論 勿論

1 勿論 勿論 勿論 勿論

勿論 勿論 勿論

勿論 勿論 勿論 勿論

勿論 勿論 勿論 勿論

勿論 勿論 勿論 勿論

勿論

勿論

1 此等之德...
 2 此等之德...
 3 此等之德...
 4 此等之德...
 5 此等之德...
 6 此等之德...
 7 此等之德...
 8 此等之德...
 9 此等之德...
 10 此等之德...

113

1 2321212121
1 232121212121212121
1 2321212121212121

2 20

20000000

Handwritten text in a cursive script, possibly representing a list or a set of instructions. The text is written in a dark ink on aged paper.

Handwritten text in a cursive script, continuing the list or instructions. The text is written in a dark ink on aged paper.

Handwritten text in a cursive script, continuing the list or instructions. The text is written in a dark ink on aged paper.

Handwritten text in a cursive script, continuing the list or instructions. The text is written in a dark ink on aged paper.

Handwritten text in a cursive script, continuing the list or instructions. The text is written in a dark ink on aged paper.



31-

1 宿所器物ハ物置ニ入給ハ漸常此也

此等器物ハ物置ニ入給ハ漸常此也

1 宿所器物ハ物置ニ入給ハ漸常此也

1 宿所器物ハ物置ニ入給ハ漸常此也

1 宿所器物ハ物置ニ入給ハ漸常此也

1 宿所器物ハ物置ニ入給ハ漸常此也

1 宿所器物ハ物置ニ入給ハ漸常此也

1 宿所器物ハ物置ニ入給ハ漸常此也

1 宿所器物ハ物置ニ入給ハ漸常此也

1 宿所器物ハ物置ニ入給ハ漸常此也

1 宿所器物ハ物置ニ入給ハ漸常此也

1 宿所器物ハ物置ニ入給ハ漸常此也

1 宿所器物ハ物置ニ入給ハ漸常此也

1 宿所器物ハ物置ニ入給ハ漸常此也

養
部
集
録

高
野
集
録

Handwritten text in a cursive script, possibly a name or title.

Handwritten text in a cursive script.

Handwritten text in a cursive script.

Handwritten text in a cursive script.

Handwritten text in a cursive script.

Handwritten text in a cursive script.

Handwritten text in a cursive script.

Handwritten text in a cursive script.

Handwritten text in a cursive script.

Handwritten text in a cursive script.

Handwritten text in a cursive script.

Handwritten text in a cursive script.

Handwritten text in a cursive script.

Handwritten text in a cursive script.

Handwritten text in a cursive script.

Handwritten text in a cursive script.

Handwritten text in a cursive script.

Handwritten text in a cursive script.

Handwritten text in a cursive script.

Handwritten text in a cursive script.

書

喜入八柱三光

光

光

光

光

光

光

光

光

光

光

光

光

光

光

光

光

光

光

光

光

光

光

光

光

光

光

光

光

光

光

光

光

光

光

光

光

光

光

光

光

三才方酒七斗末 五十斤
七百十末

三才方酒二石中 七斗末

二石三斗末

一石三斗末

一石三斗末

一石三斗末

一石三斗末

一石三斗末

一石三斗末

一石三斗末

一石三斗末

一石三斗末

一石三斗末

一石三斗末

一石三斗末

一石三斗末

一石三斗末

一石三斗末

一石三斗末

一石三斗末

一石三斗末

一石三斗末

一石三斗末

一石三斗末

一石三斗末

一石三斗末

一石三斗末

一石三斗末

一石三斗末

一石三斗末

一石三斗末

一石三斗末

一石三斗末

一石三斗末

一石三斗末

一石三斗末

一石三斗末

一石三斗末

一石三斗末

一石三斗末

一石三斗末

一石三斗末

一石三斗末

一石三斗末

一石三斗末

一石三斗末

一石三斗末

一石三斗末

一石三斗末

一石三斗末

一石三斗末

一石三斗末

一石三斗末

一石三斗末

一石三斗末

1. 此字... 142 214 232 250 268 286 304 322 340 358 376 394 412 430 448 466 484 502 520 538 556 574 592 610 628 646 664 682 700 718 736 754 772 790 808 826 844 862 880 898 916 934 952 970 988 1006 1024 1042 1060 1078 1096 1114 1132 1150 1168 1186 1204 1222 1240 1258 1276 1294 1312 1330 1348 1366 1384 1402 1420 1438 1456 1474 1492 1510 1528 1546 1564 1582 1600 1618 1636 1654 1672 1690 1708 1726 1744 1762 1780 1798 1816 1834 1852 1870 1888 1906 1924 1942 1960 1978 1996 2014 2032 2050 2068 2086 2104 2122 2140 2158 2176 2194 2212 2230 2248 2266 2284 2302 2320 2338 2356 2374 2392 2410 2428 2446 2464 2482 2500 2518 2536 2554 2572 2590 2608 2626 2644 2662 2680 2698 2716 2734 2752 2770 2788 2806 2824 2842 2860 2878 2896 2914 2932 2950 2968 2986 3004 3022 3040 3058 3076 3094 3112 3130 3148 3166 3184 3202 3220 3238 3256 3274 3292 3310 3328 3346 3364 3382 3400 3418 3436 3454 3472 3490 3508 3526 3544 3562 3580 3598 3616 3634 3652 3670 3688 3706 3724 3742 3760 3778 3796 3814 3832 3850 3868 3886 3904 3922 3940 3958 3976 3994 4012 4030 4048 4066 4084 4102 4120 4138 4156 4174 4192 4210 4228 4246 4264 4282 4300 4318 4336 4354 4372 4390 4408 4426 4444 4462 4480 4498 4516 4534 4552 4570 4588 4606 4624 4642 4660 4678 4696 4714 4732 4750 4768 4786 4804 4822 4840 4858 4876 4894 4912 4930 4948 4966 4984 5002 5020 5038 5056 5074 5092 5110 5128 5146 5164 5182 5200 5218 5236 5254 5272 5290 5308 5326 5344 5362 5380 5398 5416 5434 5452 5470 5488 5506 5524 5542 5560 5578 5596 5614 5632 5650 5668 5686 5704 5722 5740 5758 5776 5794 5812 5830 5848 5866 5884 5902 5920 5938 5956 5974 5992 6010 6028 6046 6064 6082 6100 6118 6136 6154 6172 6190 6208 6226 6244 6262 6280 6298 6316 6334 6352 6370 6388 6406 6424 6442 6460 6478 6496 6514 6532 6550 6568 6586 6604 6622 6640 6658 6676 6694 6712 6730 6748 6766 6784 6802 6820 6838 6856 6874 6892 6910 6928 6946 6964 6982 7000 7018 7036 7054 7072 7090 7108 7126 7144 7162 7180 7198 7216 7234 7252 7270 7288 7306 7324 7342 7360 7378 7396 7414 7432 7450 7468 7486 7504 7522 7540 7558 7576 7594 7612 7630 7648 7666 7684 7702 7720 7738 7756 7774 7792 7810 7828 7846 7864 7882 7900 7918 7936 7954 7972 7990 8008 8026 8044 8062 8080 8098 8116 8134 8152 8170 8188 8206 8224 8242 8260 8278 8296 8314 8332 8350 8368 8386 8404 8422 8440 8458 8476 8494 8512 8530 8548 8566 8584 8602 8620 8638 8656 8674 8692 8710 8728 8746 8764 8782 8800 8818 8836 8854 8872 8890 8908 8926 8944 8962 8980 9000

此字... 142 214 232 250 268 286 304 322 340 358 376 394 412 430 448 466 484 502 520 538 556 574 592 610 628 646 664 682 700 718 736 754 772 790 808 826 844 862 880 898 916 934 952 970 988 1006 1024 1042 1060 1078 1096 1114 1132 1150 1168 1186 1204 1222 1240 1258 1276 1294 1312 1330 1348 1366 1384 1402 1420 1438 1456 1474 1492 1510 1528 1546 1564 1582 1600 1618 1636 1654 1672 1690 1708 1726 1744 1762 1780 1798 1816 1834 1852 1870 1888 1906 1924 1942 1960 1978 1996 2014 2032 2050 2068 2086 2104 2122 2140 2158 2176 2194 2212 2230 2248 2266 2284 2302 2320 2338 2356 2374 2392 2410 2428 2446 2464 2482 2500 2518 2536 2554 2572 2590 2608 2626 2644 2662 2680 2698 2716 2734 2752 2770 2788 2806 2824 2842 2860 2878 2896 2914 2932 2950 2968 2986 2996

1. 此字... 142 214 232 250 268 286 304 322 340 358 376 394 412 430 448 466 484 502 520 538 556 574 592 610 628 646 664 682 700 718 736 754 772 790 808 826 844 862 880 898 916 934 952 970 988 1006 1024 1042 1060 1078 1096 1114 1132 1150 1168 1186 1204 1222 1240 1258 1276 1294 1312 1330 1348 1366 1384 1402 1420 1438 1456 1474 1492 1510 1528 1546 1564 1582 1600 1618 1636 1654 1672 1690 1708 1726 1744 1762 1780 1798 1816 1834 1852 1870 1888 1906 1924 1942 1960 1978 1996 2014 2032 2050 2068 2086 2104 2122 2140 2158 2176 2194 2212 2230 2248 2266 2284 2302 2320 2338 2356 2374 2392 2410 2428 2446 2464 2482 2500 2518 2536 2554 2572 2590 2608 2626 2644 2662 2680 2698 2716 2734 2752 2770 2788 2806 2824 2842 2860 2878 2896 2914 2932 2950 2968 2986 2996

此字... 142 214 232 250 268 286 304 322 340 358 376 394 412 430 448 466 484 502 520 538 556 574 592 610 628 646 664 682 700 718 736 754 772 790 808 826 844 862 880 898 916 934 952 970 988 1006 1024 1042 1060 1078 1096 1114 1132 1150 1168 1186 1204 1222 1240 1258 1276 1294 1312 1330 1348 1366 1384 1402 1420 1438 1456 1474 1492 1510 1528 1546 1564 1582 1600 1618 1636 1654 1672 1690 1708 1726 1744 1762 1780 1798 1816 1834 1852 1870 1888 1906 1924 1942 1960 1978 1996 2014 2032 2050 2068 2086 2104 2122 2140 2158 2176 2194 2212 2230 2248 2266 2284 2302 2320 2338 2356 2374 2392 2410 2428 2446 2464 2482 2500 2518 2536 2554 2572 2590 2608 2626 2644 2662 2680 2698 2716 2734 2752 2770 2788 2806 2824 2842 2860 2878 2896 2914 2932 2950 2968 2986 2996

1. 此字... 142 214 232 250 268 286 304 322 340 358 376 394 412 430 448 466 484 502 520 538 556 574 592 610 628 646 664 682 700 718 736 754 772 790 808 826 844 862 880 898 916 934 952 970 988 1006 1024 1042 1060 1078 1096 1114 1132 1150 1168 1186 1204 1222 1240 1258 1276 1294 1312 1330 1348 1366 1384 1402 1420 1438 1456 1474 1492 1510 1528 1546 1564 1582 1600 1618 1636 1654 1672 1690 1708 1726 1744 1762 1780 1798 1816 1834 1852 1870 1888 1906 1924 1942 1960 1978 1996 2014 2032 2050 2068 2086 2104 2122 2140 2158 2176 2194 2212 2230 2248 2266 2284 2302 2320 2338 2356 2374 2392 2410 2428 2446 2464 2482 2500 2518 2536 2554 2572 2590 2608 2626 2644 2662 2680 2698 2716 2734 2752 2770 2788 2806 2824 2842 2860 2878 2896 2914 2932 2950 2968 2986 2996

御前奉書

同日奉書

同日奉書

同日奉書

同日奉書

同日奉書

同日奉書

同日奉書

同日奉書

同日奉書

同日奉書

89

1/2 page

1250

1 此乃...
 2 此乃...
 3 此乃...
 4 此乃...
 5 此乃...

新集

新集

新集

1 此乃...
 2 此乃...
 3 此乃...
 4 此乃...
 5 此乃...
 6 此乃...
 7 此乃...

御集

1251

1 14 20 25 30 35 40 45 50 55 60 65 70 75 80 85 90 95 100
1 14 20 25 30 35 40 45 50 55 60 65 70 75 80 85 90 95 100

1 14 20 25 30 35 40 45 50 55 60 65 70 75 80 85 90 95 100
1 14 20 25 30 35 40 45 50 55 60 65 70 75 80 85 90 95 100

1 14 20 25 30 35 40 45 50 55 60 65 70 75 80 85 90 95 100
1 14 20 25 30 35 40 45 50 55 60 65 70 75 80 85 90 95 100

1 14 20 25 30 35 40 45 50 55 60 65 70 75 80 85 90 95 100

1 14 20 25 30 35 40 45 50 55 60 65 70 75 80 85 90 95 100

1 14 20 25 30 35 40 45 50 55 60 65 70 75 80 85 90 95 100
1 14 20 25 30 35 40 45 50 55 60 65 70 75 80 85 90 95 100

1 14 20 25 30 35 40 45 50 55 60 65 70 75 80 85 90 95 100
1 14 20 25 30 35 40 45 50 55 60 65 70 75 80 85 90 95 100

1 14 20 25 30 35 40 45 50 55 60 65 70 75 80 85 90 95 100

1 14 20 25 30 35 40 45 50 55 60 65 70 75 80 85 90 95 100
1 14 20 25 30 35 40 45 50 55 60 65 70 75 80 85 90 95 100

1 14 20 25 30 35 40 45 50 55 60 65 70 75 80 85 90 95 100

1 14 20 25 30 35 40 45 50 55 60 65 70 75 80 85 90 95 100
1 14 20 25 30 35 40 45 50 55 60 65 70 75 80 85 90 95 100

1 14 20 25 30 35 40 45 50 55 60 65 70 75 80 85 90 95 100
1 14 20 25 30 35 40 45 50 55 60 65 70 75 80 85 90 95 100

1 14 20 25 30 35 40 45 50 55 60 65 70 75 80 85 90 95 100
1 14 20 25 30 35 40 45 50 55 60 65 70 75 80 85 90 95 100

For your information...
I hope you will be...
Yours
Wm. G.

1. The first...
2. The second...
3. The third...
4. The fourth...
5. The fifth...

1. The first...
2. The second...
3. The third...
4. The fourth...
5. The fifth...

1. The first...
2. The second...
3. The third...
4. The fourth...
5. The fifth...

1. The first...
2. The second...
3. The third...
4. The fourth...
5. The fifth...

Handwritten text at the top of the page, possibly a title or header.

1. With such a situation

Handwritten text in the second column, including the characters '家' and '名'.

Handwritten text in the third column, including the characters '家' and '名'.

Handwritten text in the fourth column, including the characters '家' and '名'.

Handwritten text in the fifth column, including the characters '家' and '名'.

Handwritten text in the sixth column, including the characters '家' and '名'.

Handwritten text in the seventh column, including the characters '家' and '名'.

Handwritten text in the eighth column, including the characters '家' and '名'.

Handwritten text in the ninth column, including the characters '家' and '名'.

Handwritten text in the tenth column, including the characters '家' and '名'.

1 1861年 2月 1日 東京 芝罘 芝罘 芝罘
芝罘 芝罘 芝罘 芝罘

1 1861年 2月 1日 芝罘 芝罘 芝罘 芝罘
芝罘 芝罘 芝罘 芝罘

芝罘

1 1861年 2月 1日 芝罘 芝罘 芝罘 芝罘
芝罘 芝罘 芝罘 芝罘

芝罘 芝罘 芝罘 芝罘

1 1861年 2月 1日 芝罘 芝罘 芝罘 芝罘
芝罘 芝罘 芝罘 芝罘

芝罘 芝罘 芝罘 芝罘

芝罘 芝罘 芝罘 芝罘

1 西の中央の国に流るる水 (一) 西の中央の
1 西の中央の国に流るる水 (一) 西の中央の
1 西の中央の国に流るる水 (一) 西の中央の

1 西の中央の国に流るる水 (一) 西の中央の
1 西の中央の国に流るる水 (一) 西の中央の
1 西の中央の国に流るる水 (一) 西の中央の

1 西の中央の国に流るる水 (一) 西の中央の
1 西の中央の国に流るる水 (一) 西の中央の
1 西の中央の国に流るる水 (一) 西の中央の

1 西の中央の国に流るる水 (一) 西の中央の
1 西の中央の国に流るる水 (一) 西の中央の
1 西の中央の国に流るる水 (一) 西の中央の

1 西の中央の国に流るる水 (一) 西の中央の
1 西の中央の国に流るる水 (一) 西の中央の
1 西の中央の国に流るる水 (一) 西の中央の

1 西の中央の国に流るる水 (一) 西の中央の
1 西の中央の国に流るる水 (一) 西の中央の
1 西の中央の国に流るる水 (一) 西の中央の

1 西の中央の国に流るる水 (一) 西の中央の
1 西の中央の国に流るる水 (一) 西の中央の
1 西の中央の国に流るる水 (一) 西の中央の


~~~~~ 宣統元年

冊 茲因本館新編

宣統元年 宣統元年 宣統元年

宣統元年 宣統元年 宣統元年

宣統元年 宣統元年 宣統元年

宣統元年

宣統元年 宣統元年

宣統元年 宣統元年

宣統元年

宣統元年 宣統元年

宣統元年 宣統元年 宣統元年

宣統元年



可了之書其好者

軍者好殺者

1 若也也 (faint handwritten text)

1 1/2 (faint handwritten text)

時月長短

活少者令其閑

1 活少者令其閑 (faint handwritten text)

1 活少者令其閑 (faint handwritten text)

今中花及能津

復 (faint handwritten text)

地 (faint handwritten text)

致 (faint handwritten text)

行好治子



1 201201 E. - 200000000000  
1000

1 201201201 200000000000

1 201201201 200000000000

1 201201201 200000000000

1 201201201 200000000000

1000

1000

201201201 200000000000  
201201201 200000000000  
201201201 200000000000

201201201 200000000000  
201201201 200000000000



Handwritten text at the top of the right page, possibly a title or header.

Handwritten text on the right page, first line.

Handwritten text on the right page, second line.

Handwritten text on the right page, third line.

Handwritten text on the right page, fourth line.

Handwritten text on the right page, fifth line.

Handwritten text on the right page, sixth line.

Handwritten text on the right page, seventh line.

Handwritten text on the right page, eighth line.

Handwritten text on the right page, ninth line.

Handwritten text on the right page, tenth line.

Handwritten text on the left page, first line.

Handwritten text on the left page, second line.

Handwritten text on the left page, third line.

Handwritten text on the left page, fourth line.

Handwritten text on the left page, fifth line.

Handwritten text on the left page, sixth line.

Handwritten text on the left page, seventh line.

Handwritten text on the left page, eighth line.

Handwritten text on the left page, ninth line.



1 卷之二 第... 号

Handwritten text in a cursive script, likely a letter or document. The text is written in a fluid, connected style across several lines.

Handwritten text in a cursive script, continuing from the previous section. The characters are dense and difficult to decipher without a key.

Vertical text on the left side of the page, possibly a signature or a date, written in a bold, calligraphic style.



Handwritten signature or name in cursive script.

Multiple lines of handwritten text in cursive script, some appearing to be crossed out or heavily scribbled over.

Handwritten text in cursive script, including a large, stylized character that resembles 'B' or '8'.

Handwritten text in cursive script, including a large, stylized character that resembles 'B' or '8'.

Handwritten text in cursive script, including a large, stylized character that resembles 'B' or '8'.

Handwritten text in cursive script, including a large, stylized character that resembles 'B' or '8'.

Small handwritten mark or signature at the bottom left corner.



Handwritten text in a cursive script, likely a letter or document, written on the right page of an open manuscript. The text is dense and fills most of the page.

Handwritten text in a cursive script, likely a letter or document, written on the left page of an open manuscript. The text is dense and fills most of the page.

Additional handwritten text at the bottom of the left page, possibly a signature or a separate note.



Handwritten text in a cursive script, likely a historical document or manuscript. The text is written on aged, yellowed paper and is organized into several lines. The script is highly stylized and difficult to decipher. The document appears to be a list or a series of entries, with some lines starting with a vertical stroke. The text is written in a cursive script, likely a historical document or manuscript. The text is organized into several lines, with some lines starting with a vertical stroke. The script is highly stylized and difficult to decipher. The document appears to be a list or a series of entries.



花 花 花 花 花  
花 花 花 花 花  
花 花 花 花 花  
花 花 花 花 花  
花 花 花 花 花  
花 花 花 花 花  
花 花 花 花 花  
花 花 花 花 花  
花 花 花 花 花  
花 花 花 花 花

花 花 花 花 花  
花 花 花 花 花  
花 花 花 花 花  
花 花 花 花 花  
花 花 花 花 花  
花 花 花 花 花  
花 花 花 花 花  
花 花 花 花 花  
花 花 花 花 花  
花 花 花 花 花

花 花 花 花 花  
花 花 花 花 花  
花 花 花 花 花  
花 花 花 花 花  
花 花 花 花 花  
花 花 花 花 花  
花 花 花 花 花  
花 花 花 花 花  
花 花 花 花 花  
花 花 花 花 花

花 花 花 花 花  
花 花 花 花 花  
花 花 花 花 花  
花 花 花 花 花  
花 花 花 花 花  
花 花 花 花 花  
花 花 花 花 花  
花 花 花 花 花  
花 花 花 花 花  
花 花 花 花 花



Handwritten signature or name at the top right of the page.

Handwritten text, possibly a date or reference number, located below the signature.

Handwritten text, possibly a name or title, written in a cursive style.

Handwritten text, possibly a name or title, written in a cursive style.

Handwritten text, possibly a name or title, written in a cursive style.

Handwritten text, possibly a name or title, written in a cursive style.

Handwritten text, possibly a name or title, written in a cursive style.

Handwritten text, possibly a name or title, written in a cursive style.

Handwritten text, possibly a name or title, written in a cursive style.

Handwritten text, possibly a name or title, written in a cursive style.

Handwritten text, possibly a name or title, written in a cursive style.

Handwritten text, possibly a name or title, written in a cursive style.



Handwritten text in cursive script, likely a list or account. The text is written vertically on the right page of an open manuscript. It consists of several lines of characters, some of which appear to be numbers or specific terms, though they are difficult to decipher due to the cursive style. The ink is dark and the paper shows signs of age and wear.

Handwritten text in cursive script, likely a list or account. The text is written vertically on the left page of an open manuscript. It consists of several lines of characters, some of which appear to be numbers or specific terms, though they are difficult to decipher due to the cursive style. The ink is dark and the paper shows signs of age and wear.

Handwritten text at the bottom of the left page, possibly a signature or a date. It is written in a similar cursive style to the rest of the document.



1 此後... 打... 宗  
2 此後... 宗

此後... 宗

此後... 宗

此後... 宗

此後... 宗

此後... 宗

此後... 宗

此後... 宗

此後



1 此係... 之... 之...

1 此係...

1 此係... 之...

1 此係... 之... 之...

1 此係... 之... 之... 之...

1 此係... 之... 之... 之... 之...

1 此係... 之... 之... 之... 之... 之...

1 此係... 之... 之... 之... 之... 之... 之...

1 此係... 之... 之... 之... 之... 之... 之... 之...

1 此係... 之... 之... 之... 之... 之... 之... 之... 之...

1 此係... 之... 之... 之... 之... 之... 之... 之... 之... 之...

1 此係... 之... 之... 之... 之... 之... 之... 之... 之... 之... 之...

1 此係... 之... 之... 之... 之... 之... 之... 之... 之... 之... 之... 之...

1 此係... 之... 之... 之... 之... 之... 之... 之... 之... 之... 之... 之... 之...



一 諸君の御覧に  
一 御覧に

一 御覧に

一 御覧に

一 御覧に

一 御覧に

一 御覧に

一 御覧に

一 御覧に

一 御覧に

一 御覧に

一 御覧に

一 御覧に

一 御覧に

一 御覧に

一 御覧に

一 御覧に

一 御覧に



1. ~~Handwritten text~~  
 2. ~~Handwritten text~~  
 3. ~~Handwritten text~~  
 4. ~~Handwritten text~~  
 5. ~~Handwritten text~~  
 6. ~~Handwritten text~~  
 7. ~~Handwritten text~~  
 8. ~~Handwritten text~~  
 9. ~~Handwritten text~~  
 10. ~~Handwritten text~~  
 11. ~~Handwritten text~~  
 12. ~~Handwritten text~~  
 13. ~~Handwritten text~~  
 14. ~~Handwritten text~~  
 15. ~~Handwritten text~~  
 16. ~~Handwritten text~~  
 17. ~~Handwritten text~~  
 18. ~~Handwritten text~~  
 19. ~~Handwritten text~~  
 20. ~~Handwritten text~~  
 21. ~~Handwritten text~~  
 22. ~~Handwritten text~~  
 23. ~~Handwritten text~~  
 24. ~~Handwritten text~~  
 25. ~~Handwritten text~~  
 26. ~~Handwritten text~~  
 27. ~~Handwritten text~~  
 28. ~~Handwritten text~~  
 29. ~~Handwritten text~~  
 30. ~~Handwritten text~~  
 31. ~~Handwritten text~~  
 32. ~~Handwritten text~~  
 33. ~~Handwritten text~~  
 34. ~~Handwritten text~~  
 35. ~~Handwritten text~~  
 36. ~~Handwritten text~~  
 37. ~~Handwritten text~~  
 38. ~~Handwritten text~~  
 39. ~~Handwritten text~~  
 40. ~~Handwritten text~~  
 41. ~~Handwritten text~~  
 42. ~~Handwritten text~~  
 43. ~~Handwritten text~~  
 44. ~~Handwritten text~~  
 45. ~~Handwritten text~~  
 46. ~~Handwritten text~~  
 47. ~~Handwritten text~~  
 48. ~~Handwritten text~~  
 49. ~~Handwritten text~~  
 50. ~~Handwritten text~~  
 51. ~~Handwritten text~~  
 52. ~~Handwritten text~~  
 53. ~~Handwritten text~~  
 54. ~~Handwritten text~~  
 55. ~~Handwritten text~~  
 56. ~~Handwritten text~~  
 57. ~~Handwritten text~~  
 58. ~~Handwritten text~~  
 59. ~~Handwritten text~~  
 60. ~~Handwritten text~~  
 61. ~~Handwritten text~~  
 62. ~~Handwritten text~~  
 63. ~~Handwritten text~~  
 64. ~~Handwritten text~~  
 65. ~~Handwritten text~~  
 66. ~~Handwritten text~~  
 67. ~~Handwritten text~~  
 68. ~~Handwritten text~~  
 69. ~~Handwritten text~~  
 70. ~~Handwritten text~~  
 71. ~~Handwritten text~~  
 72. ~~Handwritten text~~  
 73. ~~Handwritten text~~  
 74. ~~Handwritten text~~  
 75. ~~Handwritten text~~  
 76. ~~Handwritten text~~  
 77. ~~Handwritten text~~  
 78. ~~Handwritten text~~  
 79. ~~Handwritten text~~  
 80. ~~Handwritten text~~  
 81. ~~Handwritten text~~  
 82. ~~Handwritten text~~  
 83. ~~Handwritten text~~  
 84. ~~Handwritten text~~  
 85. ~~Handwritten text~~  
 86. ~~Handwritten text~~  
 87. ~~Handwritten text~~  
 88. ~~Handwritten text~~  
 89. ~~Handwritten text~~  
 90. ~~Handwritten text~~  
 91. ~~Handwritten text~~  
 92. ~~Handwritten text~~  
 93. ~~Handwritten text~~  
 94. ~~Handwritten text~~  
 95. ~~Handwritten text~~  
 96. ~~Handwritten text~~  
 97. ~~Handwritten text~~  
 98. ~~Handwritten text~~  
 99. ~~Handwritten text~~  
 100. ~~Handwritten text~~

57

34







1 正小字... 正小字... 正小字...  
正小字... 正小字... 正小字...  
正小字... 正小字... 正小字...  
正小字... 正小字... 正小字...

1 正小字... 正小字... 正小字...  
正小字... 正小字... 正小字...  
正小字... 正小字... 正小字...  
正小字... 正小字... 正小字...

1 正小字... 正小字... 正小字...  
正小字... 正小字... 正小字...  
正小字... 正小字... 正小字...  
正小字... 正小字... 正小字...  
正小字... 正小字... 正小字...  
正小字... 正小字... 正小字...  
正小字... 正小字... 正小字...  
正小字... 正小字... 正小字...  
正小字... 正小字... 正小字...  
正小字... 正小字... 正小字...

正小字... 正小字... 正小字...



Handwritten text in a cursive script, possibly representing a list or a set of instructions. The characters are dense and difficult to decipher.

1 11050 11050 — 200 — 1000 兼

Handwritten text, possibly a name or a title, written in a cursive script.

1 11050 11050 — 200 — 1000

1 11050 11050 — 200 — 1000

1 11050 11050 — 200 — 1000

1 11050 11050 — 200 — 1000

1 11050 11050 — 200 — 1000

Handwritten text at the bottom of the page, possibly a signature or a date.







1. 此先王... 中川... 德... 德... 德...  
2. 此先王... 中川... 德... 德... 德...  
3. 此先王... 中川... 德... 德... 德...

# 中教書方之說

1. 此先王... 中川... 德... 德... 德...  
2. 此先王... 中川... 德... 德... 德...  
3. 此先王... 中川... 德... 德... 德...

1. 此先王... 中川... 德... 德... 德...  
2. 此先王... 中川... 德... 德... 德...  
3. 此先王... 中川... 德... 德... 德...

1. 此先王... 中川... 德... 德... 德...  
2. 此先王... 中川... 德... 德... 德...  
3. 此先王... 中川... 德... 德... 德...







1 瑞昌 西曆 1861年

瑞昌 西曆 1861年 瑞昌 西曆 1861年

瑞昌 西曆 1861年 瑞昌 西曆 1861年

瑞昌 西曆 1861年 瑞昌 西曆 1861年

瑞昌 西曆 1861年 瑞昌 西曆 1861年

瑞昌 西曆 1861年 瑞昌 西曆 1861年

瑞昌 西曆 1861年 瑞昌 西曆 1861年

瑞昌 西曆 1861年 瑞昌 西曆 1861年

瑞昌 西曆 1861年 瑞昌 西曆 1861年

瑞昌 西曆 1861年 瑞昌 西曆 1861年

瑞昌 西曆 1861年 瑞昌 西曆 1861年

瑞昌 西曆 1861年 瑞昌 西曆 1861年

瑞昌 西曆 1861年 瑞昌 西曆 1861年

瑞昌 西曆 1861年 瑞昌 西曆 1861年

瑞昌 西曆 1861年 瑞昌 西曆 1861年

瑞昌 西曆 1861年 瑞昌 西曆 1861年

瑞昌 西曆 1861年 瑞昌 西曆 1861年

瑞昌 西曆 1861年 瑞昌 西曆 1861年

瑞昌 西曆 1861年 瑞昌 西曆 1861年

瑞昌 西曆 1861年 瑞昌 西曆 1861年

瑞昌 西曆 1861年 瑞昌 西曆 1861年



Handwritten Japanese characters, likely a name or title.

Handwritten Japanese characters, likely a name or title.

Handwritten Japanese characters, likely a name or title.

Handwritten Japanese characters, likely a name or title.

Handwritten Japanese characters, likely a name or title.

Handwritten Japanese characters, likely a name or title.

Handwritten Japanese characters, likely a name or title.

Handwritten Japanese characters, likely a name or title.

Handwritten Japanese characters, likely a name or title.

Handwritten Japanese characters, likely a name or title.

Handwritten Japanese characters, likely a name or title.

Handwritten Japanese characters, likely a name or title.

Handwritten Japanese characters, likely a name or title.

Handwritten Japanese characters, likely a name or title.

Handwritten Japanese characters, likely a name or title.

Handwritten Japanese characters, likely a name or title.

Handwritten Japanese characters, likely a name or title.

Handwritten Japanese characters, likely a name or title.

Handwritten Japanese characters, likely a name or title.

Handwritten Japanese characters, likely a name or title.

Handwritten Japanese characters, likely a name or title.

Handwritten Japanese characters, likely a name or title.

Handwritten Japanese characters, likely a name or title.

Handwritten Japanese characters, likely a name or title.

Handwritten Japanese characters, likely a name or title.

Handwritten Japanese characters, likely a name or title.

Vertical handwritten Japanese text on the left side of the page.

Small handwritten mark or characters at the bottom left.



Handwritten text in a cursive script, likely a mix of Latin and Chinese characters, covering the upper portion of the page.

Large, bold Chinese characters written vertically at the bottom of the page.

Handwritten text in a cursive script, continuing from the top of the page.

Large, bold Chinese characters written vertically at the bottom of the page.

Handwritten text in a cursive script, covering the lower portion of the page.



Handwritten title or header in cursive script.

Handwritten text line 1.

Handwritten text line 2.

Handwritten text line 3.

Handwritten text line 4.

Handwritten text line 5.

Handwritten text line 6.

Handwritten text line 7.



Handwritten characters, likely a signature or name.

Handwritten text, possibly a title or header.

Handwritten text, possibly a date or location.

Handwritten text, possibly a recipient's name.

Handwritten text, possibly a subject or topic.

Handwritten text, possibly a body of the letter.

Handwritten text, possibly a body of the letter.

Handwritten text, possibly a body of the letter.

Handwritten text, possibly a body of the letter.

Handwritten text, possibly a body of the letter.

Handwritten text, possibly a body of the letter.

Handwritten text, possibly a body of the letter.

Handwritten text, possibly a body of the letter.

Handwritten text, possibly a body of the letter.

Handwritten text, possibly a body of the letter.

Handwritten text, possibly a body of the letter.

Handwritten text, possibly a body of the letter.















Handwritten text at the top of the page, possibly a title or header.

Handwritten text in the upper right section of the page.

Handwritten text in the middle right section of the page.

Handwritten text in the middle right section of the page.

Handwritten text in the middle right section of the page.

Handwritten text in the middle right section of the page.

Handwritten text in the middle right section of the page.

Handwritten text in the middle right section of the page.

Handwritten text in the middle right section of the page.

Handwritten text in the middle right section of the page.

Handwritten text in the middle right section of the page.

Handwritten text in the middle right section of the page.







あまの御魂をいかに  
たぐひてしるす

法書とてぬらして御中

とてあまの御魂をいかに

万代にわたる御魂をいかに

けしきに取らるる御魂をいかに

とてあまの御魂をいかに

かたがたとてあまの御魂をいかに

礼をいかにたぐひてしるす

あまの御魂をいかにたぐひてしるす

あまの御魂をいかにたぐひてしるす

あまの御魂をいかにたぐひてしるす

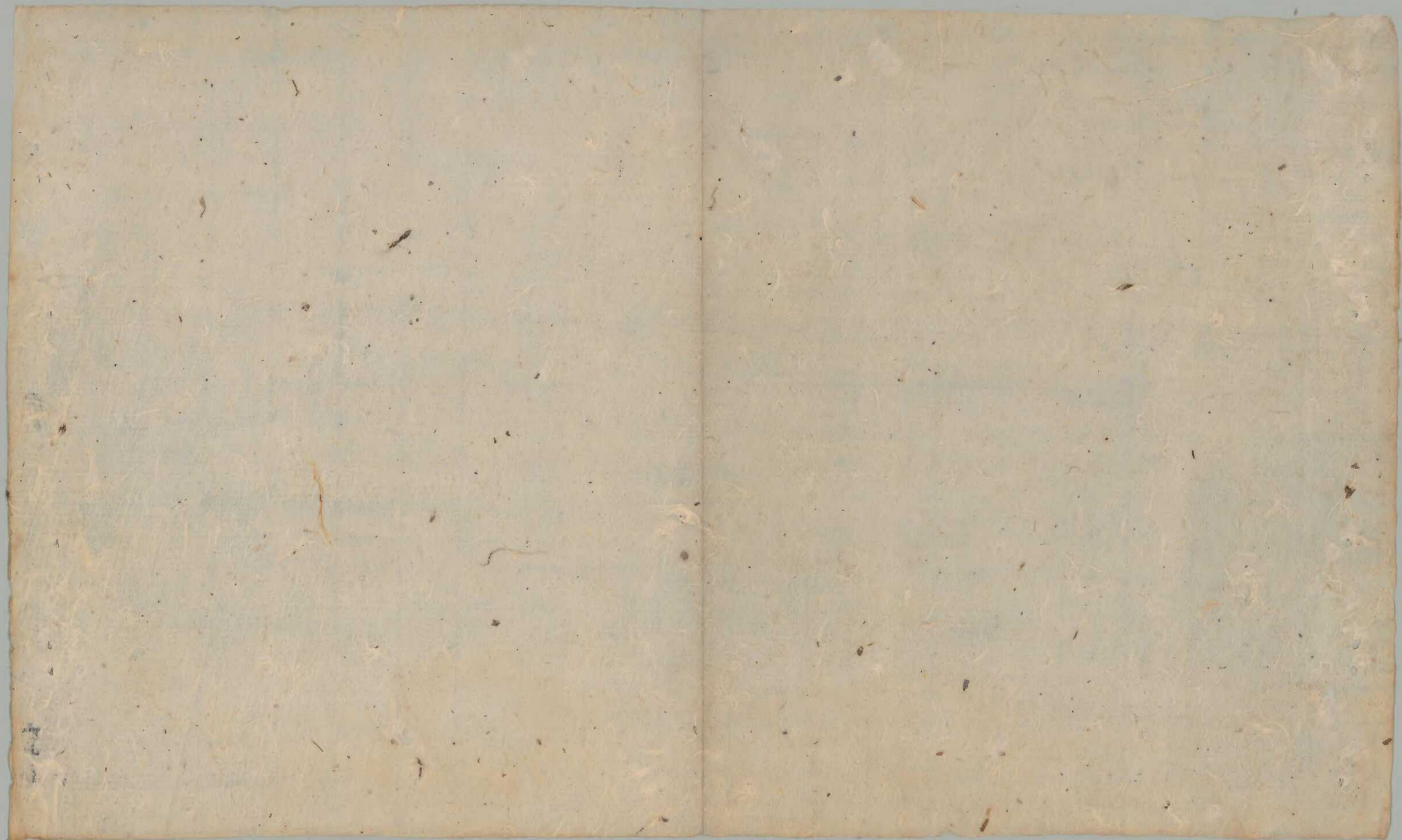
あまの御魂をいかにたぐひてしるす

あまの御魂をいかにたぐひてしるす



Handwritten Japanese text in cursive (sōsho) style, arranged in vertical columns from right to left. The text is dense and highly stylized, characteristic of the Edo or Meiji periods. The characters are fluid and interconnected, with varying line thicknesses and some large, bold strokes. The paper shows signs of age, including slight discoloration and wear at the edges.



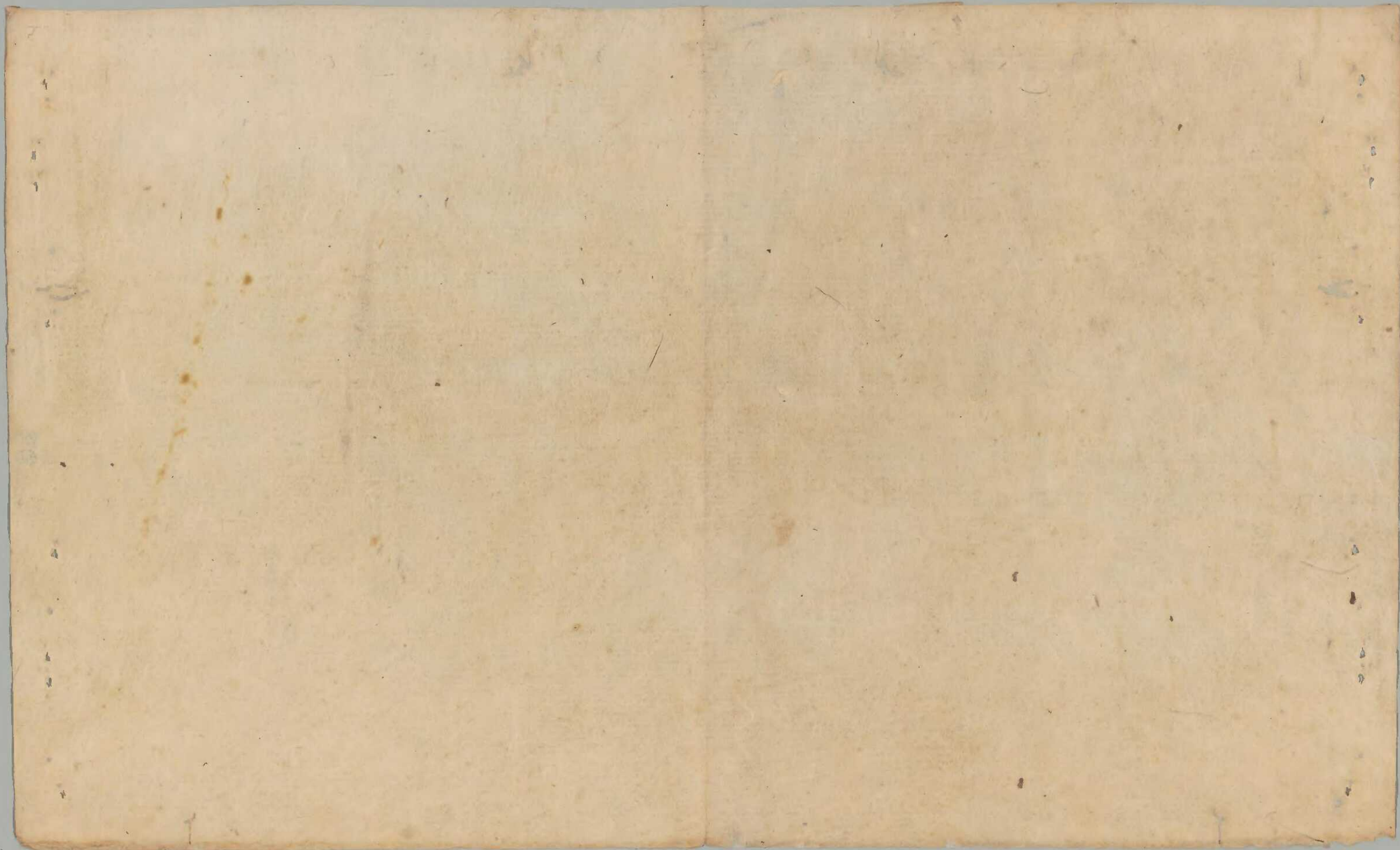




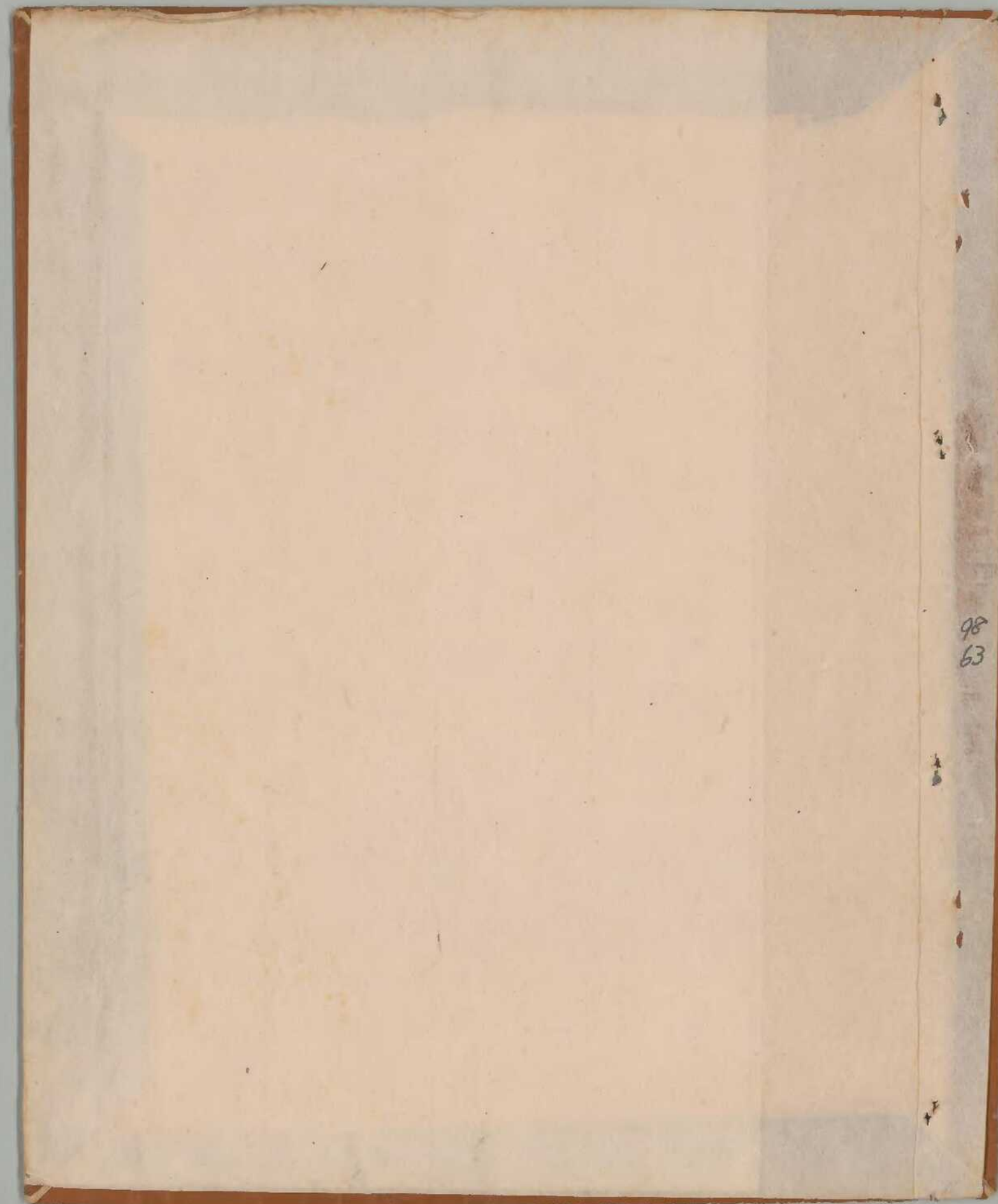
98

62









98  
63



