

天德寺

天德寺  
天德寺

天德寺

天德寺



音之乳の致初傳くは此に  
白居のりねし  
之

文

此紙巻上  
張



張











Handwritten cursive text at the top of the right page.

1 大抵此書之旨在於...

Handwritten cursive text.

1 此書之旨在於...

Handwritten cursive text.

Handwritten cursive text.

1 此書之旨在於...

Handwritten cursive text.

1 此書之旨在於...

1 此書之旨在於...

Handwritten cursive text.

1 此書之旨在於...

1 此書之旨在於...

Handwritten cursive text at the bottom of the left page.



Handwritten text in the top left corner of the right page.

Handwritten text in the top right corner of the right page.

1 第一行 (第一行) 第一行 (第一行) 第一行 (第一行)

第二行 (第二行) 第二行 (第二行) 第二行 (第二行)

第三行 (第三行) 第三行 (第三行) 第三行 (第三行)

1 第四行 (第四行) 第四行 (第四行) 第四行 (第四行)

第五行 (第五行) 第五行 (第五行) 第五行 (第五行)

第六行 (第六行) 第六行 (第六行) 第六行 (第六行)

第七行 (第七行) 第七行 (第七行) 第七行 (第七行)

第八行 (第八行) 第八行 (第八行) 第八行 (第八行)

第九行 (第九行) 第九行 (第九行) 第九行 (第九行)

第十行 (第十行) 第十行 (第十行) 第十行 (第十行)

第十一行 (第十一行) 第十一行 (第十一行) 第十一行 (第十一行)

第十二行 (第十二行) 第十二行 (第十二行) 第十二行 (第十二行)

第十三行 (第十三行) 第十三行 (第十三行) 第十三行 (第十三行)



Handwritten characters at the top of the page.

Handwritten characters below the top line.

Handwritten characters below the second line.

Handwritten characters below the third line.

Handwritten characters below the fourth line.

Handwritten characters below the fifth line.

Handwritten characters below the sixth line.

Handwritten characters below the seventh line.

Handwritten characters below the eighth line.

Handwritten characters below the ninth line.

Handwritten characters below the tenth line.

Handwritten characters below the eleventh line.

Handwritten characters below the twelfth line.

Handwritten characters below the thirteenth line.

Handwritten characters below the fourteenth line.

Handwritten characters below the fifteenth line.

Handwritten characters below the sixteenth line.

Handwritten characters below the seventeenth line.

Handwritten characters below the eighteenth line.

Handwritten characters below the nineteenth line.

Handwritten characters below the twentieth line.



Handwritten text in a cursive script, likely a letter or document. The text is written in dark ink on aged paper. It begins with a large, stylized initial letter, possibly 'E' or 'H', followed by several lines of dense, flowing script. The handwriting is characteristic of the late 17th or early 18th century.

Handwritten text in a cursive script, continuing from the previous page. It features several lines of dense, flowing script, with some lines starting with large, decorative initial letters. The ink is dark and the paper shows signs of age and wear.

Handwritten text at the bottom of the page, including a signature and possibly a date or location. The script is consistent with the rest of the document. There is a small mark resembling an equals sign (=) above the signature.



Handwritten text in a cursive script, possibly a list or a set of instructions.

Handwritten text, appearing to be a list item or a specific instruction.

Handwritten text, continuing the list or instructions.

Handwritten text, possibly a list item or a specific instruction.

Handwritten text, continuing the list or instructions.

Handwritten text, possibly a list item or a specific instruction.

Handwritten text, continuing the list or instructions.

Handwritten text, possibly a list item or a specific instruction.

Handwritten text, continuing the list or instructions.

Handwritten text, possibly a list item or a specific instruction.

Handwritten text, continuing the list or instructions.

Handwritten text, possibly a list item or a specific instruction.











1 州府之... 州府之... 州府之... 州府之... 州府之...

州府之... 州府之...

1 州府之... 州府之... 州府之... 州府之... 州府之...

州府之... 州府之...

1 州府之... 州府之... 州府之... 州府之... 州府之...

1 州府之... 州府之... 州府之... 州府之... 州府之...

1 州府之... 州府之... 州府之... 州府之... 州府之...

州府之... 州府之...

1 州府之... 州府之... 州府之... 州府之... 州府之...



Handwritten notes in the top right corner.

一四  
Handwritten notes in the top right area.

Handwritten text in the top right section.

Handwritten text in the top right section.

Handwritten text in the top right section.

Handwritten text in the top right section.

Handwritten text in the top right section.

Handwritten text in the top right section.

Handwritten text in the top right section.

Handwritten text in the top right section.

Handwritten text in the top right section.

Handwritten text in the top right section.







1 1840 年 12 月 20 日 倫敦 國會 議事 錄

1 議事 錄 第 100 號 議事 錄 第 100 號

1840

議事 錄

1 議事 錄 第 100 號 議事 錄 第 100 號

1 議事 錄 第 100 號 議事 錄 第 100 號

1 議事 錄 第 100 號 議事 錄 第 100 號

1 議事 錄 第 100 號 議事 錄 第 100 號

1 議事 錄 第 100 號 議事 錄 第 100 號

1 議事 錄 第 100 號 議事 錄 第 100 號

1 議事 錄 第 100 號 議事 錄 第 100 號

1840

1840 年 12 月 20 日 倫敦 國會 議事 錄

1 議事 錄 第 100 號 議事 錄 第 100 號

1 議事 錄 第 100 號 議事 錄 第 100 號

1 議事 錄 第 100 號 議事 錄 第 100 號

1840 年 12 月 20 日 倫敦 國會 議事 錄



有子不為父，其言謂分 國難

臣等聞之，其言謂分 指之于後

臣等聞之，其言謂分 所宗祇

臣等聞之，其言謂分 臣等聞之

臣等聞之

臣等聞之

臣等聞之，其言謂分 臣等聞之

臣等聞之，其言謂分 臣等聞之

臣等聞之，其言謂分 臣等聞之

臣等聞之，其言謂分 臣等聞之

臣等聞之，其言謂分 臣等聞之

臣等聞之，其言謂分 臣等聞之

臣等聞之，其言謂分 臣等聞之

臣等聞之，其言謂分 臣等聞之



1. To the Hon. Mr. ...

... the ... of ...

... ..

... ..

... ..

... ..

... ..

... ..

... ..

... ..

... ..

... ..







Handwritten musical notation on a single staff, consisting of a series of connected, wavy lines.

Handwritten musical notation on a single staff, featuring a series of connected, wavy lines with some vertical strokes.

Handwritten musical notation on a single staff, showing a series of connected, wavy lines with some vertical strokes.

Handwritten musical notation on a single staff, featuring a series of connected, wavy lines with some vertical strokes.

Handwritten musical notation on a single staff, showing a series of connected, wavy lines with some vertical strokes.

Handwritten musical notation on a single staff, featuring a series of connected, wavy lines with some vertical strokes.

Handwritten text, possibly a signature or a name, written in a cursive style.

Handwritten text, possibly a signature or a name, written in a cursive style.

Handwritten text, possibly a signature or a name, written in a cursive style.

Handwritten text, possibly a signature or a name, written in a cursive style.



Handwritten text in a cursive script, likely a historical document or letter. The text is written in dark ink on aged, yellowish paper. The script is highly stylized and difficult to decipher. The text is arranged in several lines, with some lines starting with a vertical line or a large initial letter. The overall appearance is that of a handwritten manuscript or a set of notes.



(1) 福

Handwritten cursive script

Handwritten cursive script

Handwritten cursive script

Handwritten cursive script

Handwritten cursive script

Handwritten cursive script

Handwritten cursive script

Handwritten cursive script

Handwritten cursive script

Handwritten cursive script

Handwritten cursive script

Handwritten cursive script

Handwritten cursive script

Handwritten cursive script



2号

親政5之印 書

名表之印 書

中子印 書

小澤印 書

木下印 書

藤田印 書

文部省印 書

第一 官 書

第二 官 書

第三 官 書

第四 官 書

第五 官 書

第六 官 書

第七 官 書

第八 官 書

第九 官 書

第十 官 書

第十一 官 書

第十二 官 書

第十三 官 書

第十四 官 書



428-1-1 花江物。小倉江口新田  
| 井原、小倉江口新田新田新田

Handwritten signature and text in cursive script, including the name "Fujisawa" and other illegible characters.

Handwritten signature and text in cursive script, including the name "Fujisawa" and other illegible characters.

Handwritten signature and text in cursive script, including the name "Fujisawa" and other illegible characters.



1 4th Jan 1844 at 10:30 AM  
We had a storm - the wind was  
strong and the rain was heavy.

1 We had a storm - the wind was  
strong and the rain was heavy.

1 We had a storm - the wind was  
strong and the rain was heavy.

1 We had a storm - the wind was  
strong and the rain was heavy.

We had a storm - the wind was  
strong and the rain was heavy.

1 We had a storm - the wind was  
strong and the rain was heavy.

1 We had a storm - the wind was  
strong and the rain was heavy.

1 We had a storm - the wind was  
strong and the rain was heavy.



おひさま 志  
初工一筋 冬木四郎首取

平丁丸ノ首ノ別名ノ注ノ丁ノ首

上野寺ノ首ノ注ノ首

七ノ首ノ首ノ注ノ首

七ノ首ノ首ノ注ノ首

首ノ注ノ首ノ注ノ首

首ノ注ノ首ノ注ノ首

初反相

首ノ注ノ首ノ注ノ首

首ノ注ノ首ノ注ノ首

首ノ注ノ首ノ注ノ首

柳一親

首ノ注ノ首ノ注ノ首

首ノ注ノ首ノ注ノ首

首ノ注ノ首ノ注ノ首

首ノ注ノ首ノ注ノ首

首ノ注ノ首ノ注ノ首

501  
105



Handwritten text at the top left, possibly a date or header.

Handwritten text at the top right, possibly a name or title.

First column of handwritten text in the middle section.

Second column of handwritten text in the middle section.

Third column of handwritten text in the middle section.

Fourth column of handwritten text in the middle section.

Fifth column of handwritten text in the middle section.

Large handwritten characters in the lower middle section, possibly a signature or name.

Bottom section of handwritten text, possibly a list or notes.

Handwritten characters at the bottom left, possibly a date or page number.



上海外灘

上海外灘

上海外灘

上海外灘

上海外灘

上海外灘

上海外灘

上海外灘

上海外灘

上海外灘

上海外灘

上海外灘

上海外灘

上海外灘

上海外灘

上海外灘

上海外灘

上海外灘

上海外灘



沙东约尔

沙自善心  
卷三

1 沙自善心  
卷三

沙自善心

沙自善心

沙自善心

沙自善心

沙自善心

沙自善心

沙自善心

沙自善心

沙自善心

21



三ノノノ

所ノノノ

目ノノノ

山ノノノ

高ノノノ

事ノノノ

心ノノノ

一ノノノ

不ノノノ

美ノノノ

一ノノノ

一ノノノ

一ノノノ



Handwritten characters, likely a name or title.

Handwritten characters, likely a name or title.

1 中州の... 漢文

1 漢文の... 漢文

1 漢文の... 漢文

1 漢文の... 漢文

漢文 抄 卷之...

漢文 抄 卷之...

漢文 抄 卷之...

漢文 抄 卷之...

漢文 抄 卷之...



十四點

Handwritten text in cursive script.

Handwritten text in cursive script.

Handwritten text in cursive script.

勅頒新字解

Handwritten text in cursive script.

十子覺事律師

汗流如海、力

多倍、大、力、也

Handwritten text in cursive script.

Handwritten text in cursive script.

Handwritten text in cursive script.

Handwritten text in cursive script.

Handwritten text in cursive script.



1. Moom SWM. - 256

in

若一地 抄所抄

抄所

三抄(抄)

三抄(抄)

若一地 抄所抄

抄

1. Moom SWM. - 256  
Moom SWM. - 256  
Moom SWM. - 256

復抄

抄

抄

Moom SWM. - 256

抄

Moom SWM. - 256

1. Moom SWM. - 256

1. Moom SWM. - 256

1. Moom SWM. - 256

抄

抄

1. Moom SWM. - 256

1. Moom SWM. - 256



Res: w...  
P...  
P...  
十 五

本...  
...  
...  
...  
...

...  
...  
...  
...  
...  
...  
...  
...











Handwritten notes in the top right corner, including the number '1' and some illegible characters.

Handwritten characters, possibly '御領内教' (Imperial Domain Instruction).

Handwritten characters, possibly '高野三右衛門' (Takano Sanjūemon).

Handwritten characters, possibly '男侍内侍' (Menji Naishi).

Handwritten characters, possibly '女侍内侍' (Nyūshi Naishi).

Handwritten characters, possibly '阿比留' (Aburū).

Handwritten characters, possibly '阿比留' (Aburū).

Handwritten characters, possibly '阿比留' (Aburū).

Handwritten characters, possibly '阿比留' (Aburū).

Handwritten characters, possibly '阿比留' (Aburū).

Handwritten characters, possibly '阿比留' (Aburū).

Large handwritten characters at the bottom of the right page, possibly '阿比留' (Aburū).

Large handwritten characters at the bottom of the right page, possibly '阿比留' (Aburū).

Large handwritten characters at the bottom of the left page, possibly '阿比留' (Aburū).

Large handwritten characters at the bottom of the left page, possibly '阿比留' (Aburū).



張

1 張

1 張

1 張

1 張

1 張

1 張

1 張

1 張

1 張

張

張







西州の諸藩の事

一 西州の諸藩の事

一 西州の諸藩の事

一 西州の諸藩の事

一 西州の諸藩の事

一 西州の諸藩の事

一 西州の諸藩の事

一 西州の諸藩の事

一 西州の諸藩の事

一 西州の諸藩の事

一 西州の諸藩の事

一 西州の諸藩の事

一 西州の諸藩の事

一 西州の諸藩の事



多子似現者人之後代

子  
湯子孫

1 此在明倫彙編

音序

1 此在明倫彙編  
音序

1 此在明倫彙編  
音序

1 此在明倫彙編  
音序

十

1 此在明倫彙編  
音序

湯子孫

音序



1 謝 亞 家 一 亞 比 家 一 亞 比 家

亞 比 家 一 亞 比 家 一 亞 比 家 一 亞 比 家

亞 比 家 一 亞 比 家 一 亞 比 家 一 亞 比 家

亞 比 家 一 亞 比 家 一 亞 比 家 一 亞 比 家

1 亞 比 家 一 亞 比 家 一

亞 比 家

1 亞 比 家 一 亞 比 家 一 亞 比 家 一

亞 比 家 一 亞 比 家 一 亞 比 家 一 亞 比 家

亞 比 家 一 亞 比 家 一 亞 比 家 一 亞 比 家

1 亞 比 家 一 亞 比 家 一

亞 比 家

亞 比 家 一 亞 比 家 一 亞 比 家 一 亞 比 家

亞 比 家 一 亞 比 家 一 亞 比 家 一 亞 比 家

1 亞 比 家 一 亞 比 家 一 亞 比 家 一

亞 比 家

亞 比 家

亞 比 家

100

101







111  
— W. B. ...

1 ...

...

1 ...

1 ...

...

...

1 ...

...

...



— 24/11/1875

Fine day for the day

1. The weather is very fine  
and the sun is shining brightly

1. The weather is very fine  
and the sun is shining brightly  
The wind is blowing from the  
west and the sea is calm  
The water is very clear and  
the fish are jumping out of  
the water

1. The weather is very fine  
and the sun is shining brightly  
The wind is blowing from the  
west and the sea is calm  
The water is very clear and  
the fish are jumping out of  
the water

1. The weather is very fine  
and the sun is shining brightly  
The wind is blowing from the  
west and the sea is calm  
The water is very clear and  
the fish are jumping out of  
the water

1. The weather is very fine  
and the sun is shining brightly  
The wind is blowing from the  
west and the sea is calm  
The water is very clear and  
the fish are jumping out of  
the water

1. The weather is very fine  
and the sun is shining brightly  
The wind is blowing from the  
west and the sea is calm  
The water is very clear and  
the fish are jumping out of  
the water



Handwritten Japanese text in cursive style (sōsho), consisting of approximately 15 vertical columns of characters. The text is densely packed and includes various characters, some of which are circled or underlined. The paper shows signs of age and wear.

上巻のり

如



1. 江戸の町並みと川舟の風景

大船の往来

江戸の町並みと川舟の風景

舟の往来

舟の往来

舟の往来

舟の往来

舟の往来

舟の往来

舟の往来

舟の往来

1. 江戸の町並みと川舟の風景

舟

1. 江戸の町並みと川舟の風景

舟

1. 江戸の町並みと川舟の風景

1. 江戸の町並みと川舟の風景

舟の往来

舟の往来

舟の往来











1 日本... 諸君... 敬啟者...

1 敬啟者... 諸君... 敬啟者... 敬啟者...

1 敬啟者... 諸君... 敬啟者... 敬啟者...

1 敬啟者... 諸君... 敬啟者... 敬啟者...

1 敬啟者... 諸君... 敬啟者... 敬啟者...

108.20







1 56124-1-145004

40

1 56124-1-145004

1 56124-1-145004

50000

1 56124-1-145004

1 56124-1-145004

1 56124-1-145004

50000

1 56124-1-145004

1 56124-1-145004

1 56124-1-145004

1 56124-1-145004

50000

1 56124-1-145004

1 56124-1-145004

1 56124-1-145004

50000

50000



Handwritten text in a cursive script, likely a personal note or a list item.

Handwritten text in a cursive script, continuing the list or notes.

Handwritten text in a cursive script, possibly a name or a specific entry.

Handwritten text in a cursive script, appearing to be a date or a time reference.

Handwritten text in a cursive script, possibly a title or a significant entry.

Handwritten text in a cursive script, likely a list item.

Handwritten text in a cursive script, likely a list item.

Handwritten text in a cursive script, possibly a name or a specific entry.

Handwritten text in a cursive script, possibly a name or a specific entry.

Handwritten text in a cursive script, likely a list item.

Handwritten text in a cursive script, possibly a name or a specific entry.

Handwritten text in a cursive script, likely a list item.

Handwritten text in a cursive script, possibly a name or a specific entry.

Handwritten text in a cursive script, possibly a name or a specific entry.

Handwritten text in a cursive script, possibly a name or a specific entry.

Handwritten text in a cursive script, likely a list item.

Handwritten text in a cursive script, possibly a name or a specific entry.

Handwritten text in a cursive script, possibly a name or a specific entry.



1. H... ..

... ..

... ..

... ..

... ..

... ..

... ..

... ..

... ..

... ..

... ..

... ..

... ..

... ..

... ..

... ..

... ..

... ..

... ..

...



Handwritten text at the top right, possibly a title or header.

Handwritten text below the header.

Large vertical characters, likely the main title or a significant name.

Vertical column of handwritten characters.

Vertical column of handwritten characters.

Vertical column of handwritten characters.

Vertical column of handwritten characters.

Vertical column of handwritten characters.

Vertical column of handwritten characters.

Vertical column of handwritten characters.

Vertical column of handwritten characters.

Vertical column of handwritten characters.

Vertical column of handwritten characters at the bottom left.

Small handwritten characters on the left side.



10/15/11

1. The first thing I did was to  
go to the bank and get some  
money out of my account. I  
had to go to the bank because  
I had no cash on hand.

2.

2. The second thing I did was to  
go to the store and buy some  
groceries. I had to go to the  
store because I had no food  
at home. I bought some  
meat, milk, and bread. I  
also bought some fruit and  
vegetables. I had to go to the  
store because I had no money  
left over from the bank.

3. The third thing I did was to  
go to the office and see  
my boss. I had to go to the  
office because I had some  
work to do. I talked to my  
boss about my work and he  
gave me some advice. I had  
to go to the office because I  
had no one else to talk to.

4. The fourth thing I did was to  
go to the gym and exercise.  
I had to go to the gym because  
I had no energy. I exercised  
for an hour and I felt much  
better. I had to go to the gym  
because I had no other way  
to feel better.

5. The fifth thing I did was to  
go to the library and read  
some books. I had to go to the  
library because I had no books  
at home. I read some books  
about history and science. I  
had to go to the library because  
I had no other way to learn.

6. The sixth thing I did was to  
go to the park and play  
with my friends. I had to go to  
the park because I had no  
fun at home. I played for  
hours and I had a great time.  
I had to go to the park because  
I had no other way to have fun.

7. The seventh thing I did was to  
go to the movies and see  
a new film. I had to go to the  
movies because I had no  
entertainment at home. I saw  
a very good film and I had  
a great time. I had to go to  
the movies because I had no  
other way to be entertained.

10/15/11



きしんきん  
石足かん  
心なまきり  
十

入  
入  
入  
入  
入

事  
事  
事  
事

入  
入  
入  
入

事  
事  
事  
事

入  
入  
入  
入

事  
事  
事  
事

入  
入  
入  
入

事  
事  
事  
事

入  
入  
入  
入

事  
事  
事  
事

入  
入  
入  
入

事  
事  
事  
事

入  
入  
入  
入







1 英若符... 1/12

1 英若符... 1/12

the

the

1 英若符... 1/12

the

1 英若符... 1/12

the

1 英若符... 1/12

1 英若符... 1/12

1 英若符... 1/12

1 英若符... 1/12

the

1 英若符... 1/12

1 英若符... 1/12

the

1 英若符... 1/12

1 英若符... 1/12

1 英若符... 1/12



Handwritten text in cursive script, possibly a signature or name, located at the top right of the page.

1. 第一行  
2. 第二行  
3. 第三行

4. 第四行  
5. 第五行

6. 第六行  
7. 第七行

8. 第八行  
9. 第九行

10. 第十行  
11. 第十一行

12. 第十二行  
13. 第十三行

14. 第十四行  
15. 第十五行

16. 第十六行  
17. 第十七行

18. 第十八行  
19. 第十九行

20. 第二十行  
21. 第二十一行



Handwritten text in a cursive script, likely a historical document or manuscript. The text is written in dark ink on aged, yellowish paper. It consists of several lines of text, with some characters appearing to be in a different script or dialect. The handwriting is fluid and somewhat stylized, characteristic of historical cursive. There are some faint markings and a small number '100' visible on the left side of the page.



Handwritten text in a cursive script, likely a list or a series of notes. It begins with a vertical line and contains several lines of text.

Handwritten text, possibly a signature or a specific note, located below the first main section.

Second section of handwritten text, starting with a vertical line and continuing with several lines of cursive script.

Third section of handwritten text, starting with a vertical line and continuing with several lines of cursive script.

Fourth section of handwritten text, starting with a vertical line and continuing with several lines of cursive script.

Fifth section of handwritten text, starting with a vertical line and continuing with several lines of cursive script.







1 瑞心居士

2 瑞心居士

瑞心居士  
瑞心居士  
瑞心居士

瑞心居士

瑞心居士  
瑞心居士  
瑞心居士

瑞心居士

瑞心居士  
瑞心居士  
瑞心居士

瑞心居士  
瑞心居士  
瑞心居士

瑞心居士  
瑞心居士  
瑞心居士

瑞心居士  
瑞心居士  
瑞心居士

瑞心居士

瑞心居士



Handwritten text at the top of the page.

Handwritten text, possibly a header or address.

Main body of handwritten text, starting with a large initial letter.

Second section of handwritten text.

Third section of handwritten text.

Fourth section of handwritten text.

Fifth section of handwritten text.

Handwritten signature or name at the bottom.



Handwritten text at the top of the page, possibly a title or header, written in a cursive script.

11

Main body of handwritten text on the right page, consisting of several lines of cursive script.

Main body of handwritten text on the left page, consisting of several lines of cursive script.







Handwritten header or title at the top of the page.

一 諸君の御覧に付、本邦の事情を察し、

一 諸君の御覧に付、本邦の事情を察し、

一 諸君の御覧に付、本邦の事情を察し、

一 諸君の御覧に付、本邦の事情を察し、

一 諸君の御覧に付、本邦の事情を察し、

一 諸君の御覧に付、本邦の事情を察し、

一 諸君の御覧に付、本邦の事情を察し、

一 諸君の御覧に付、本邦の事情を察し、

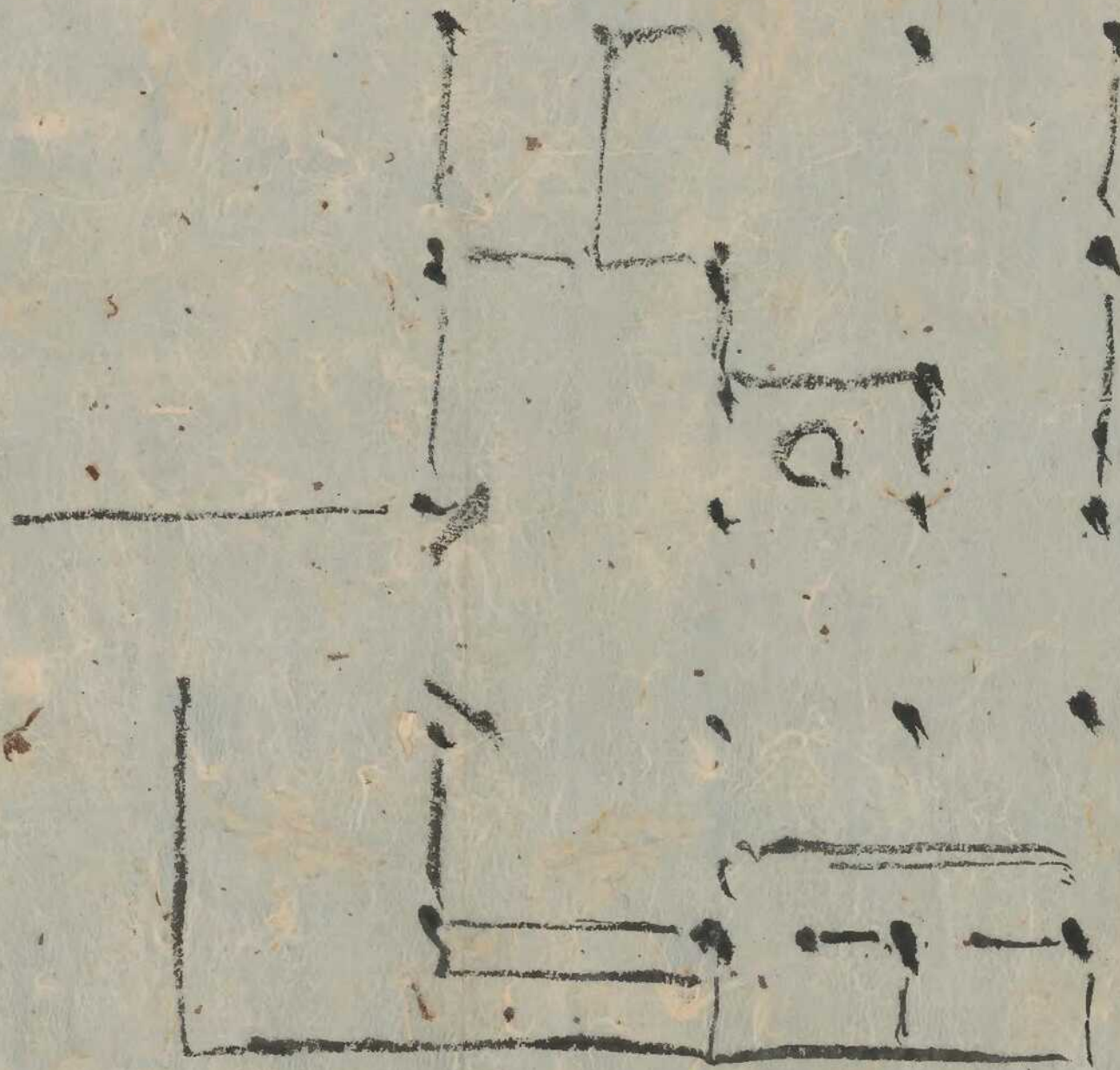
一 諸君の御覧に付、本邦の事情を察し、

一 諸君の御覧に付、本邦の事情を察し、

一 諸君の御覧に付、本邦の事情を察し、



801  
93





三六八

初唐

以之

秀

卯

南

三六八

初唐

以之

卯

南

卯

南

801  
09



序

東守直公...

...

...

...

...

...

...

...

...

...

...

...

...

...

...

...

...

...

...

...

...

...

...

...

...

...

...

...

...

...

...

...

...

...

...

...

...

...

...

...

...

...

...

201  
17



清人教習

一 廿五

清人教習

一 廿五

清人教習

一 廿五

清人教習

一 廿五

清人教習

一 廿五

清人教習

一 廿五

清人教習

一 廿五

清人教習

一 廿五

清人教習

一 廿五

清人教習

一 廿五

清人教習

一 廿五

清人教習

一 廿五

清人教習

一 廿五

清人教習

一 廿五

88







Handwritten text at the top right, possibly a title or header.

1-11

智 劍 影 子 新 著

le 4111 121 216  
劍 影 子 劍 影 子  
le 4111 121 216

1 此 劍 影 子 劍 影 子

劍 影 子 劍 影 子  
劍 影 子 劍 影 子

劍 影 子 劍 影 子  
劍 影 子 劍 影 子

劍 影 子 劍 影 子  
劍 影 子 劍 影 子

劍 影 子 劍 影 子  
劍 影 子 劍 影 子

劍 影 子 劍 影 子  
劍 影 子 劍 影 子

801  
34



三

一 二

一 三

一 四

一 五

一 六

一 七

一 八

一 九

一 十

一 十一

一 十二

一 十三

一 十四

一 十五

一 十六

一 十七

一 十八

一 十九

一 二十

一 二十一

一 二十二

一 二十三

一 二十四

一 二十五

一 二十六

一 二十七

一 二十八

一 二十九

一 三十

一 三十一

一 三十二

一 三十三

一 三十四

一 三十五

一 三十六

一 三十七

一 三十八

一 三十九



Handwritten cursive text, likely a signature or name, written vertically on the right side of the page.

Handwritten cursive text, possibly a date or a specific reference, written vertically below the signature.

Handwritten cursive text, continuing the vertical writing on the right side.

Handwritten cursive text, continuing the vertical writing on the right side.

Handwritten cursive text, continuing the vertical writing on the right side.

Handwritten cursive text, continuing the vertical writing on the right side.

Handwritten cursive text, continuing the vertical writing on the right side.

Handwritten cursive text, continuing the vertical writing on the right side.

Handwritten cursive text, continuing the vertical writing on the right side.

Handwritten cursive text, continuing the vertical writing on the right side.

Handwritten cursive text, continuing the vertical writing on the right side.

Handwritten cursive text, continuing the vertical writing on the right side.

Handwritten cursive text, continuing the vertical writing on the right side.

Handwritten cursive text, continuing the vertical writing on the right side.

Handwritten cursive text, continuing the vertical writing on the right side.

Handwritten cursive text, continuing the vertical writing on the right side.

Handwritten cursive text, continuing the vertical writing on the right side.







善方秋一規

十一年九月廿日

同月十二日

心志不遂

增子古田理

善方秋一規

同月十二日

心志不遂

增子古田理

善方秋一規

同月十二日





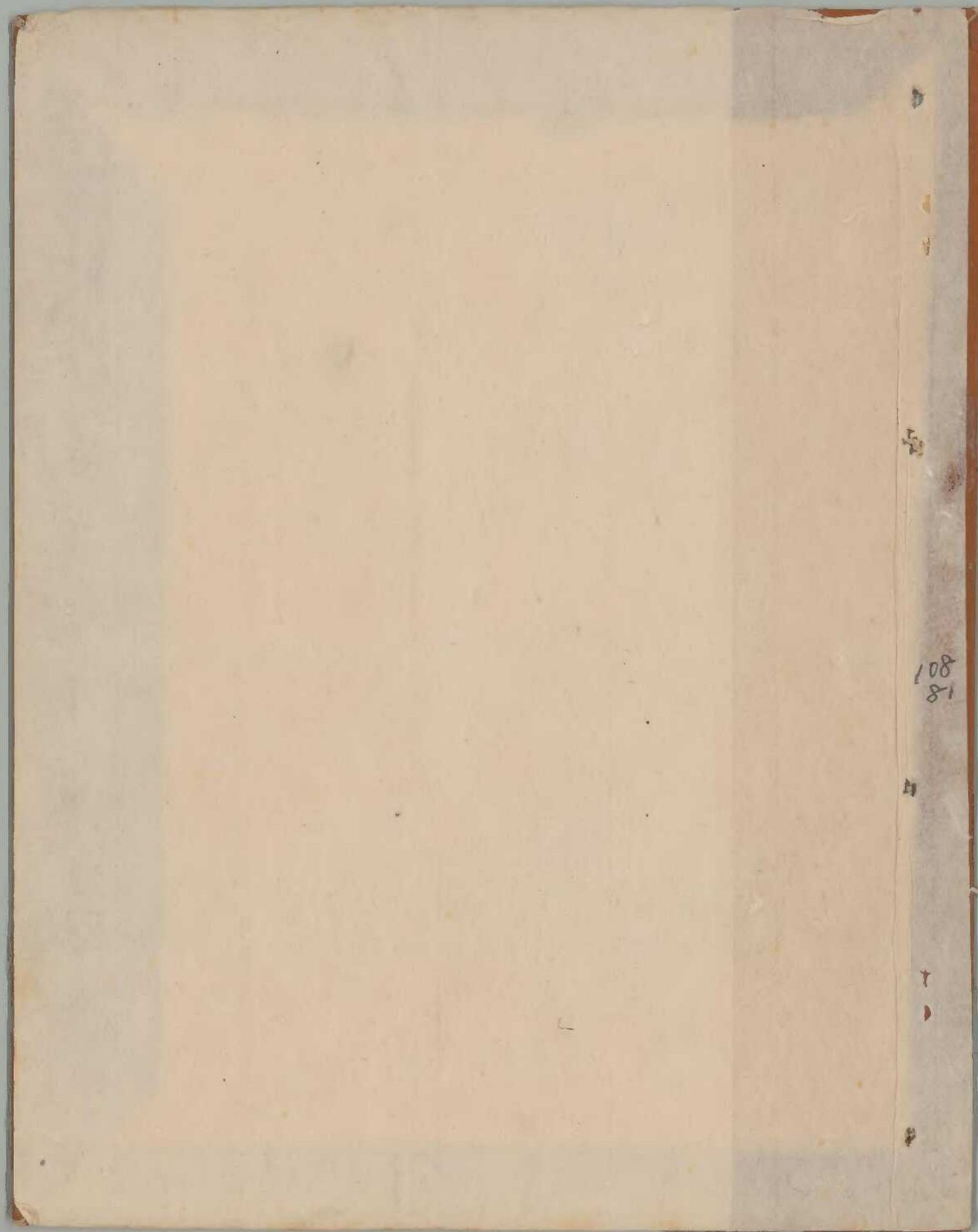


108  
80









108  
81



